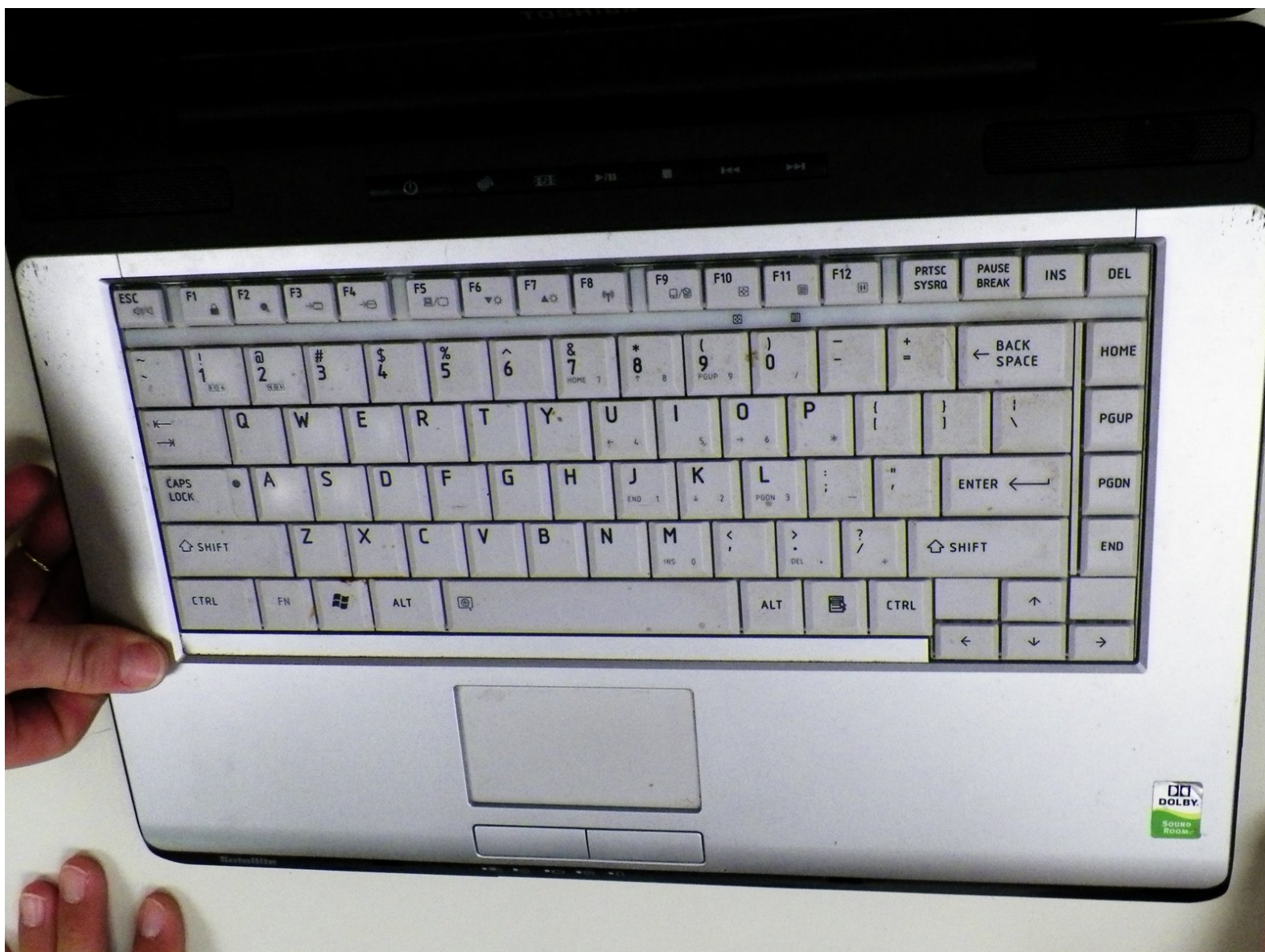




Toshiba Satellite A215-S7425 Keyboard Replacement

This guide is for Toshiba Satellite A215-S7425 keyboard removal.

Written By: Marianne



INTRODUCTION

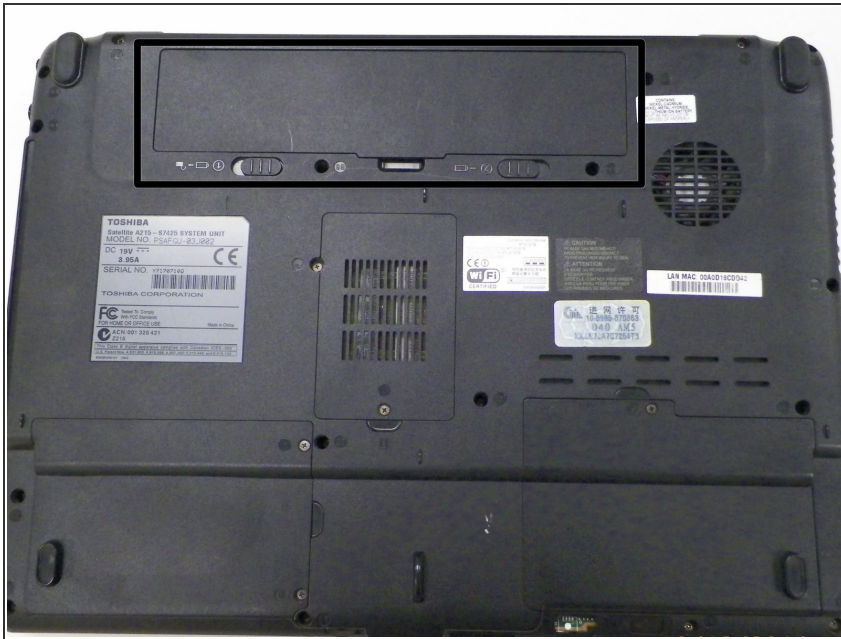
This guide will give detailed instructions on removing the Toshiba Satellite A215-S7425 keyboard for replacement.



TOOLS:

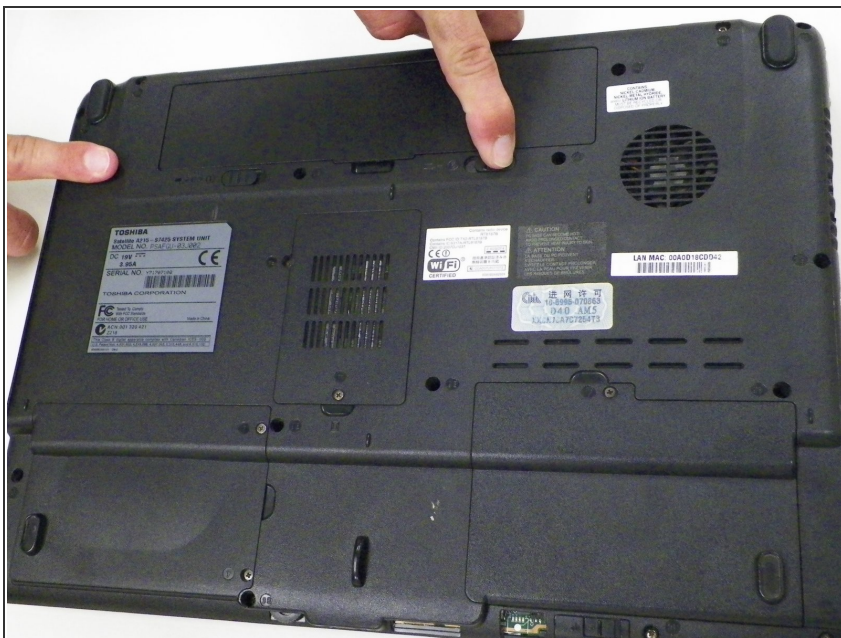
- [Spudger](#) (1)
 - [Phillips #1 Screwdriver](#) (1)
-

Step 1 — Battery



- Turn off the computer.
- Disconnect the charging cable from computer.
- ⚠ Failure to unplug the cable could result in electric shock.
- Flip the computer upside down.

Step 2



- Slide latches labeled #1 and #2, located outside the battery cover, away from each other.
- ⓘ Latch #1 will click over and stay while latch #2 will have to be held for battery to release.

Step 3



- Gently lift and pull the battery out of the device.

Step 4 — Keyboard



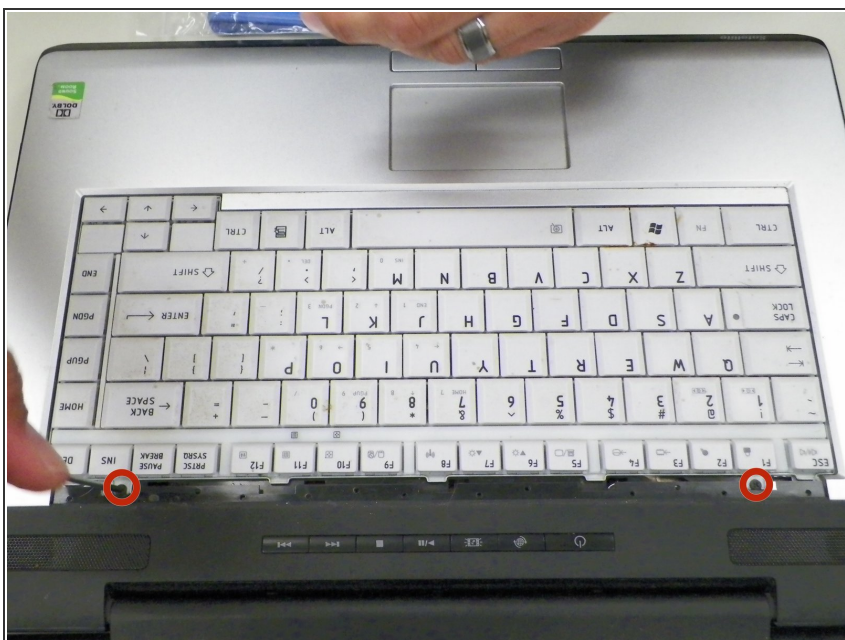
- Turn the device so the top side is facing up. Open device to expose key board.

Step 5



- Locate plastic bezel above keyboard and use flat side of spudger to pry away from device.

Step 6



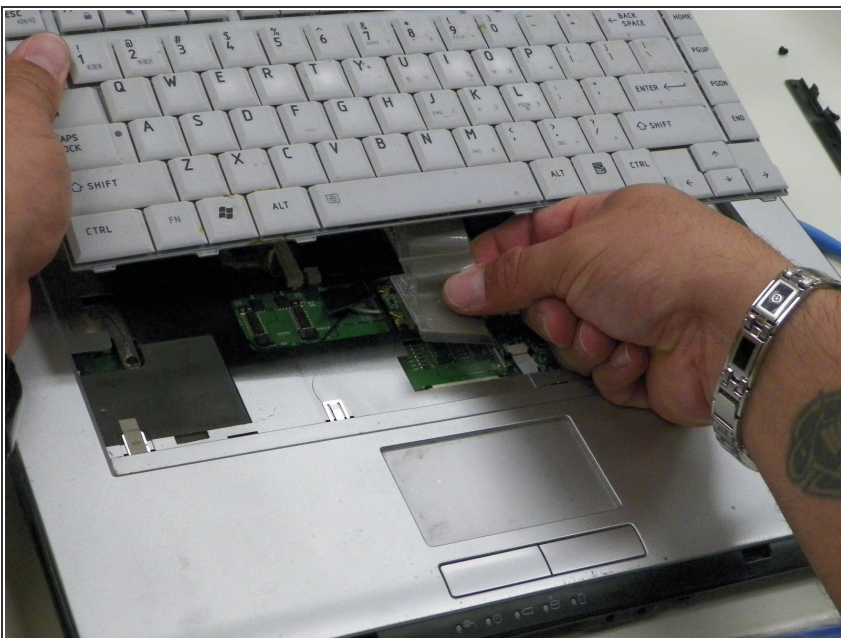
- Remove **2** Phillips 3.1 mm size screws from each side above the keyboard.

Step 7



- Gently lift keyboard a few inches above device, exposing the attached ribbon cable.

Step 8



- Gently disconnect the ribbon cable from the motherboard, it should easily slide out from the connector.
- ⚠ To avoid damage to the ribbon cable, Do not yank or forcibly remove. To avoid further damage to the cable do not bend it. A bent ribbon cable may cause the keyboard to not function correctly.

To reassemble your device, follow these instructions in reverse order.