



Motorola i886 Slide-out Keyboard Replacement

A guide for replacing the Motorola i886 slide-out keyboard.

Written By: Felicita Correa



INTRODUCTION

This guide shows how to replace the Motorola i886 slide-out keyboard.



TOOLS:

- [T5 Torx Screwdriver](#) (1)
 - [iFixit Opening Tools](#) (1)
-

Step 1 — Back Cover



- Undo the headphone jack and USB port cover with your fingertip. Place your middle finger in the indent on the upper left side of the back of the phone.

Step 2 — Open



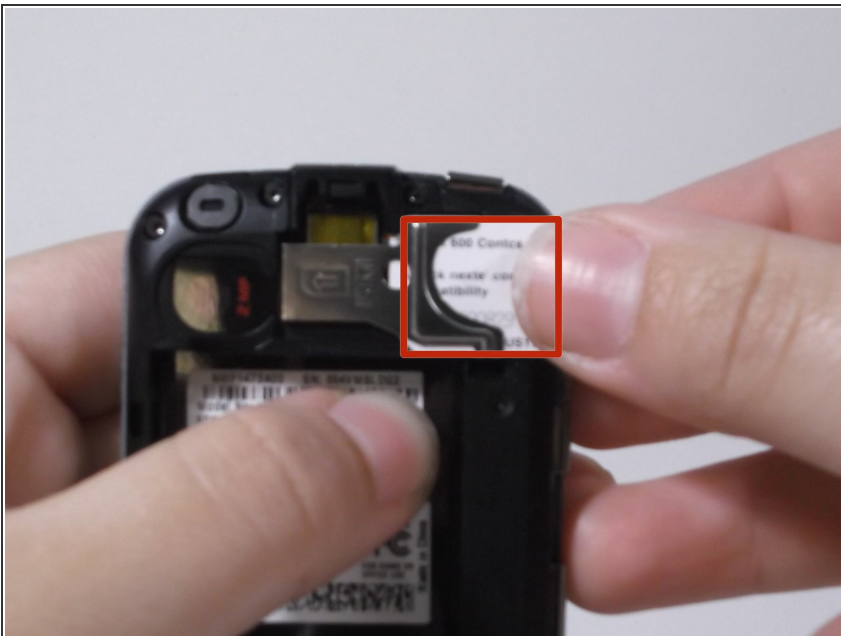
- Pull back until cover is removed. Place cover aside.

Step 3 — Battery



- Locate battery and use your index finger to grasp the upper left side of the battery and pull back to remove. Set battery aside.

Step 4 — SIM Card



- Locate and use your thumb to slide the SIM card to the right until it is removed and set it aside.

Step 5 — Screw Removal



- Remove eight black .4 centimeter screws on the top, bottom, and sides of the phone with a T5 Torx screwdriver by inserting it into the screws and turning it to the left. Set screws aside.

Step 6 — Separating



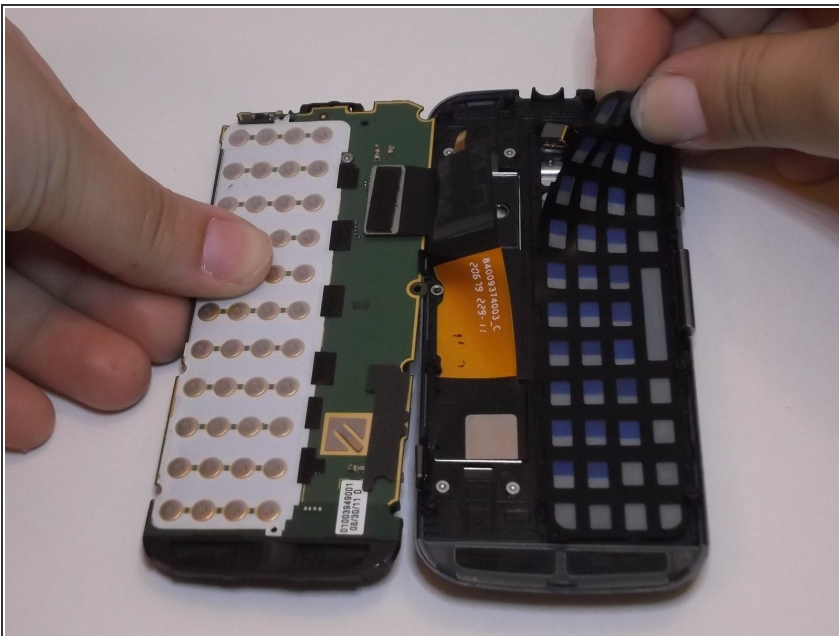
- Loosen four fastener pieces on the side and bottom with a plastic opening tool to pry them backwards.
- Insert the plastic opening tool between the loosened casing and the rest of the phone and pry the two pieces apart to remove the casing.

Step 7



- Remove the .3 centimeter silver screw with the T5 Torx screwdriver.
- Use your fingertips to lift up the circuit board and lay it on the side of the phone. Note that the two pieces are attached by a gold and black strip.

Step 8 — Keyboard Removal



- Locate and grip the black, white, and blue keyboard layer with your fingernail, lift up to remove it.

To reassemble your device, follow these instructions in reverse order.