



Toshiba Tecra M2 RAM Replacement

This guide will show how to take out the RAM card on a Toshiba Tecra M2.

Written By: Cindy Nguyen





TOOLS:

- [Phillips #00 Screwdriver](#) (1)
-

Step 1 — Battery



- Flip the laptop upside down so the back compartment is facing up.
- Place left thumb on the battery lock tab.
- Place right thumb on the battery release latch.

Step 2



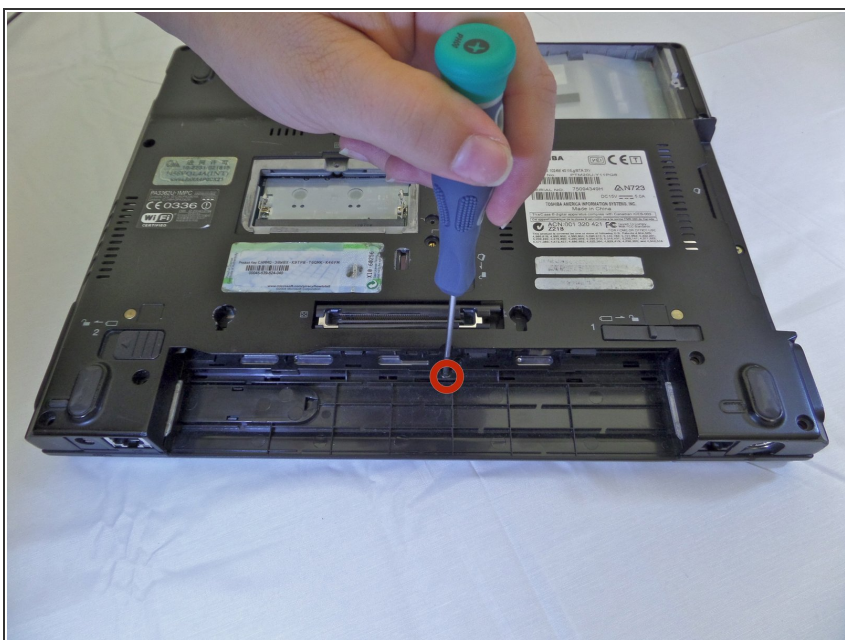
- Slide both tabs outward at the same time to release battery pack.

Step 3



- Pull out the battery after it has popped out and set aside.
- ❗ The battery and the battery cover are in one piece

Step 4 — RAM



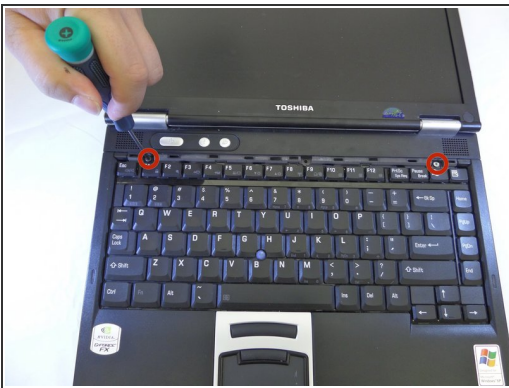
- Use a #00 phillips head screwdriver to remove the 8mm screw for the keyboard strip located under the battery.

Step 5



- Turn the device over and open it up to the display and keyboard.
- Gently lift a corner of the keyboard strip until it pops out of its position.

Step 6



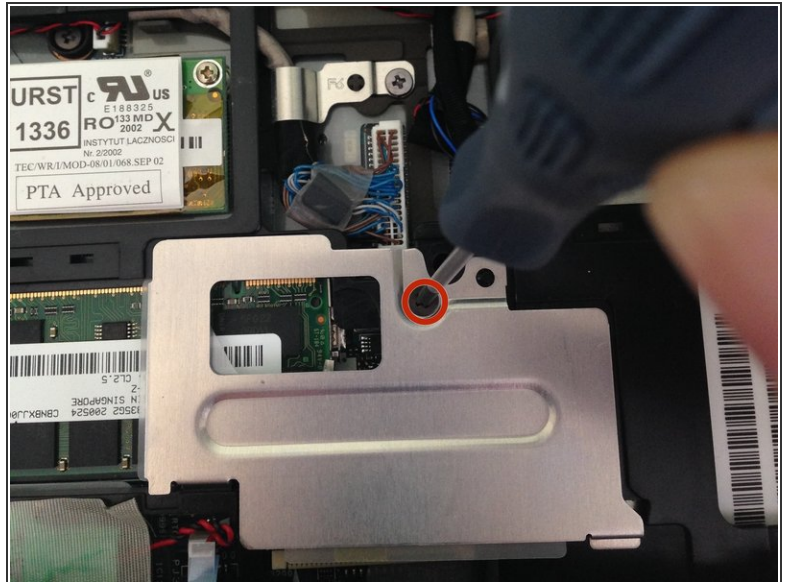
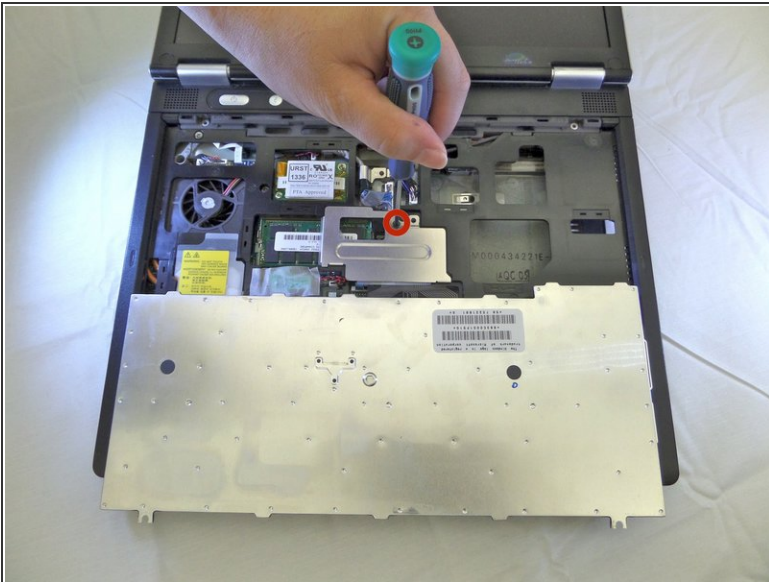
- Using a #00 Phillips head screwdriver, remove the two 4mm screws found underneath the keyboard strip.

Step 7



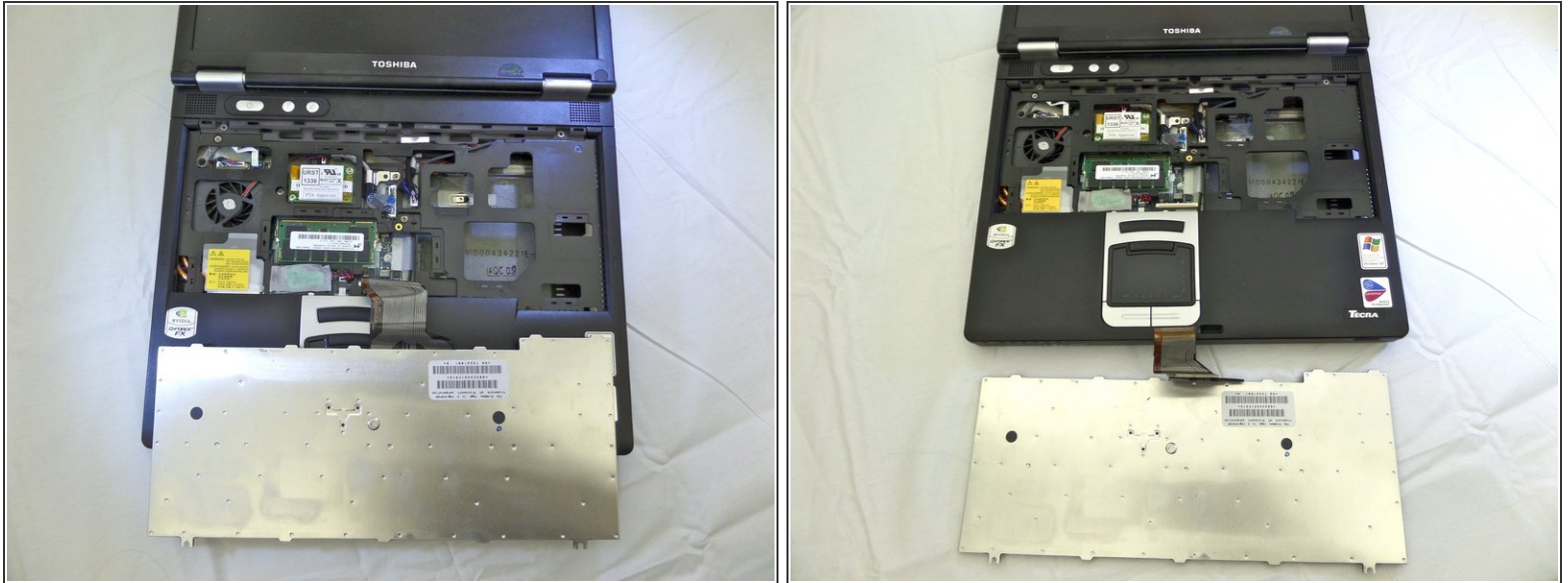
- Pop the keyboard up gently and let it rest on top of the touch pad
- ⓘ The keyboard is attached underneath by a thin film. Do not rip the keyboard off. Gently lay it down without ripping the film.

Step 8



- Using a #00 philips head screwdriver, remove the 6mm screw holding the metal plate down.

Step 9



- Gently remove the keyboard connector film from the motherboard with your fingers by lifting upwards.
- Set aside the keyboard.

Step 10



- Pull back the metal tabs holding down your RAM card at the same time.
- Grab the module by the sides with two index fingers and pull upwards after it has popped up.

To reassemble your device, follow these instructions in reverse order.