



Besta Super 5000 Motherboard Replacement

Written By: Jessie



TOOLS:

iFixit Opening Tool (1)

Phillips #0 Screwdriver (1)

ESD Safe Blunt Nose Tweezers (1)

Step 1 — Battery



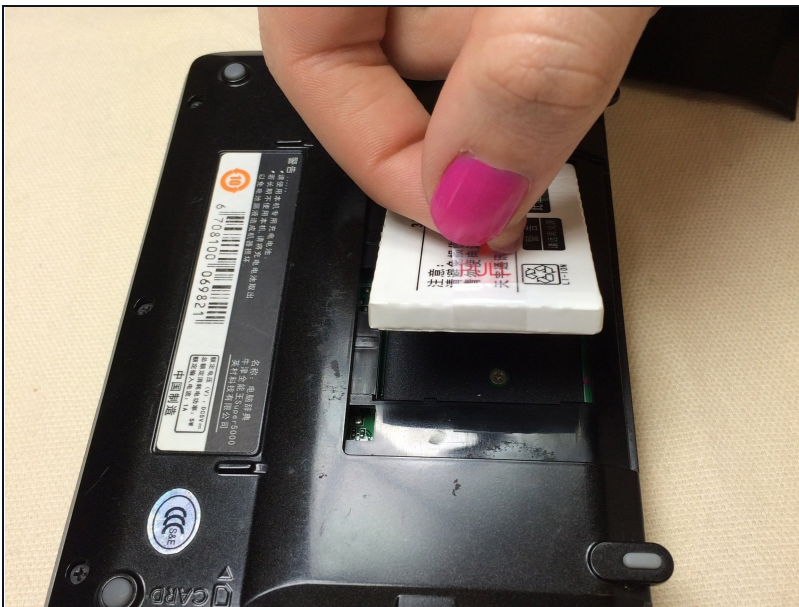
- Turn the device over so that the barcode is facing upwards.

Step 2



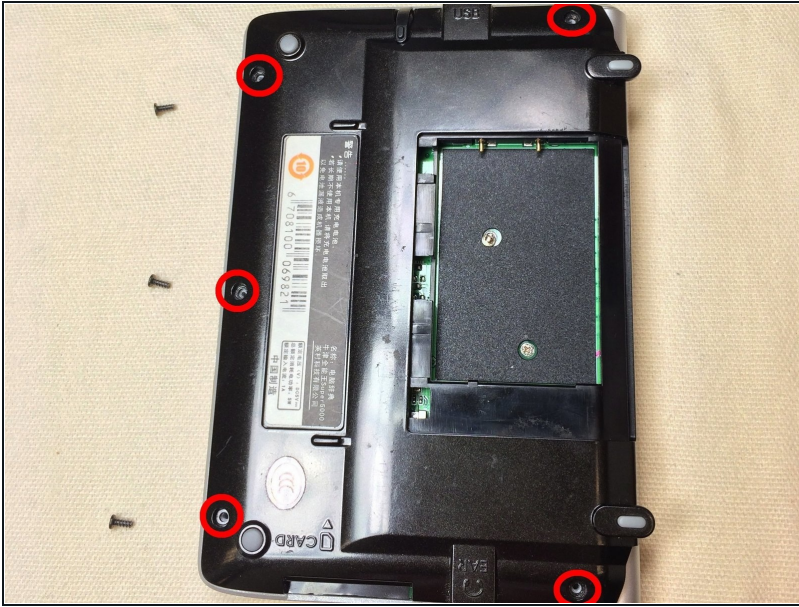
- Place your fingers on the battery cover arrow and pull the cover down and off the device.

Step 3



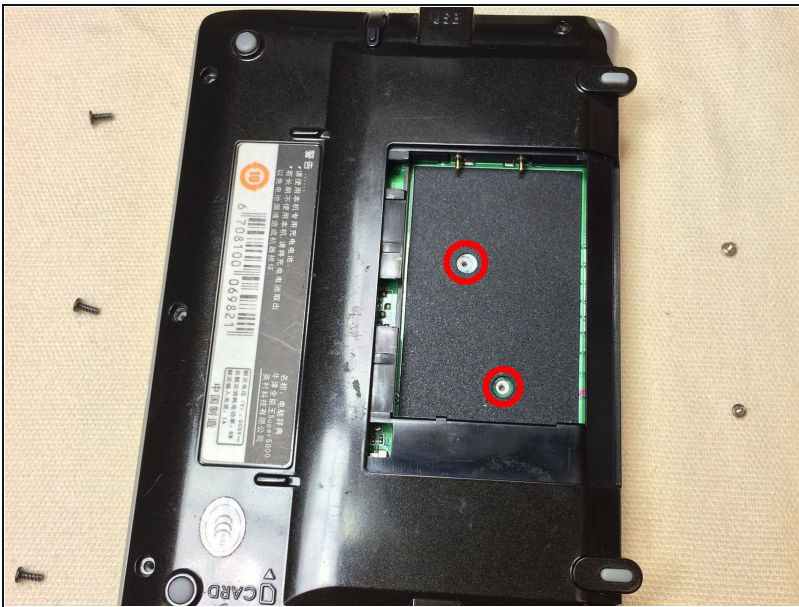
- Pull upwards on the battery tab to remove the battery from the device.

Step 4 — Back Cover



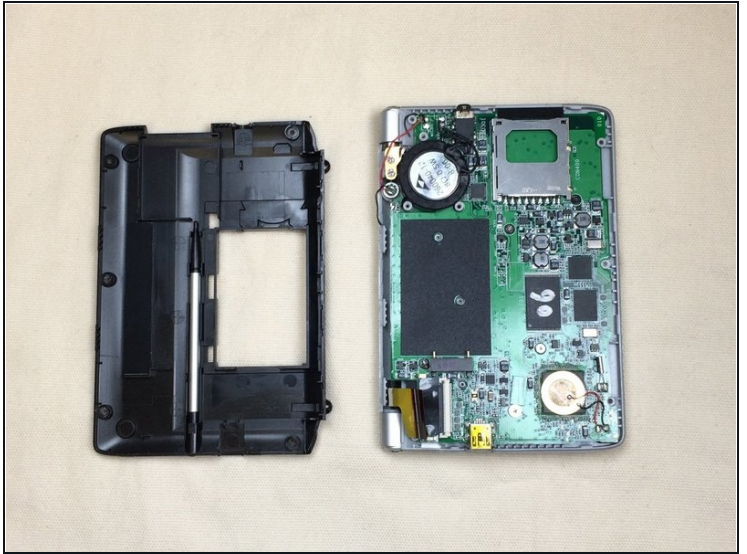
- Remove the five screws around the edge of the device using a Phillips #0 screwdriver.

Step 5



- Remove the two screws behind the battery using a Phillips #0 screwdriver.

Step 6



⚠ Potential for device damage: All screws must be removed before you begin this step. Do not forcefully pry apart the device with screws still in it because you may damage it.

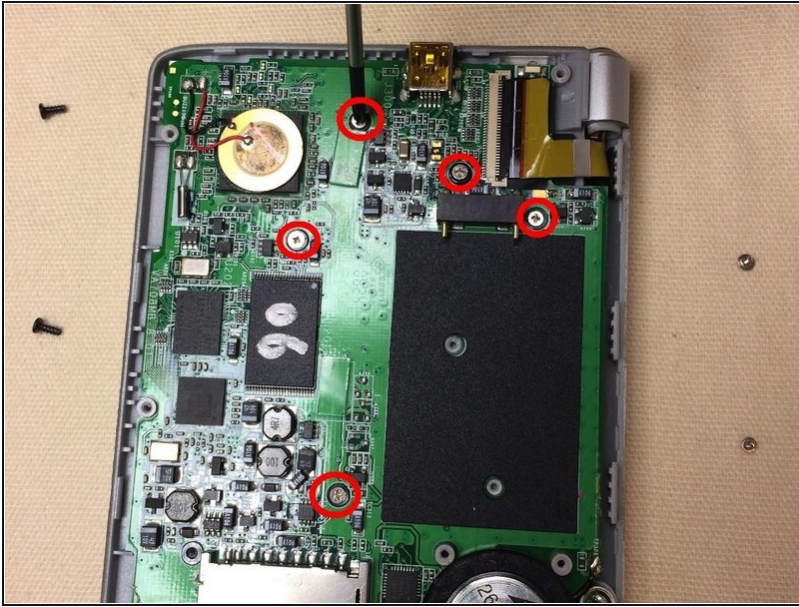
- Gently pry off the backing using an opening tool.

Step 7 — Motherboard



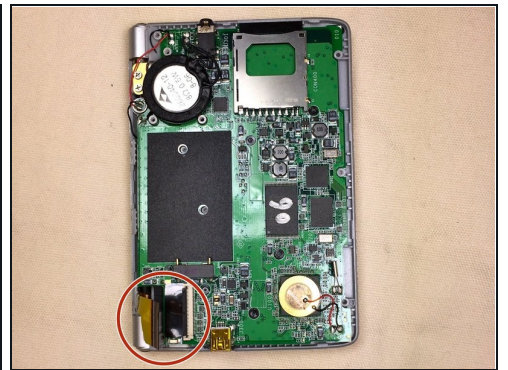
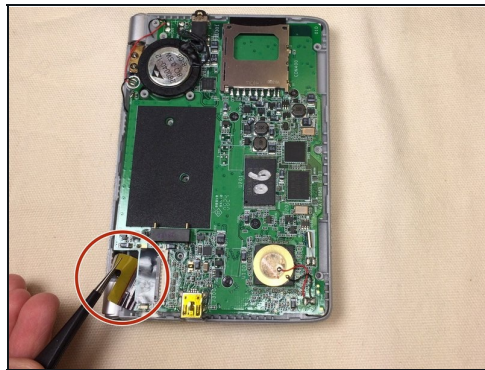
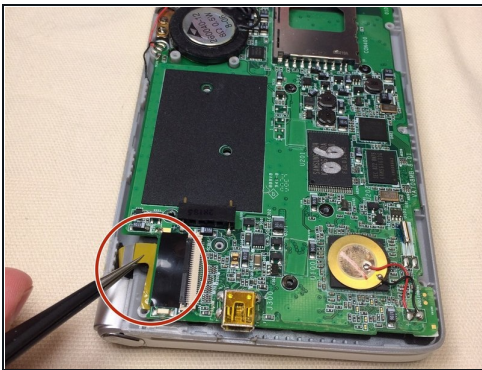
- Remove the three silver screws from the black round battery using a Phillips #0 screwdriver.

Step 8



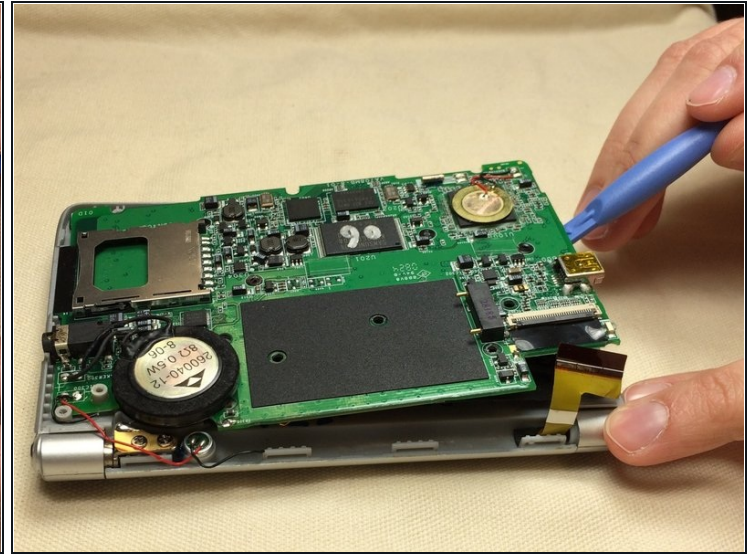
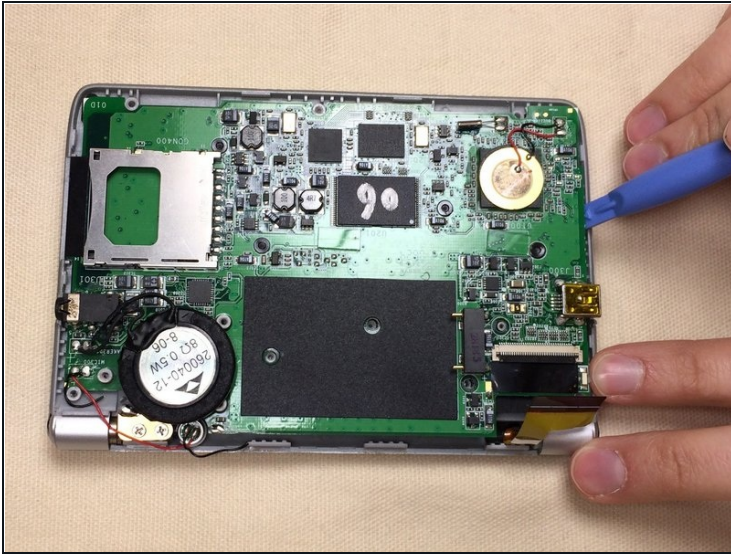
- Remove the five small screws from the motherboard using a Phillips #0 screwdriver.

Step 9



- Using a pair of [tweezers](#), pinch the center of the yellow ribbon located in the corner of the device.
- ⚠ Potential for device damage: Do not yank or remove the ribbon from the device.
- Carefully pull the hidden piece of yellow ribbon out from underneath the motherboard.

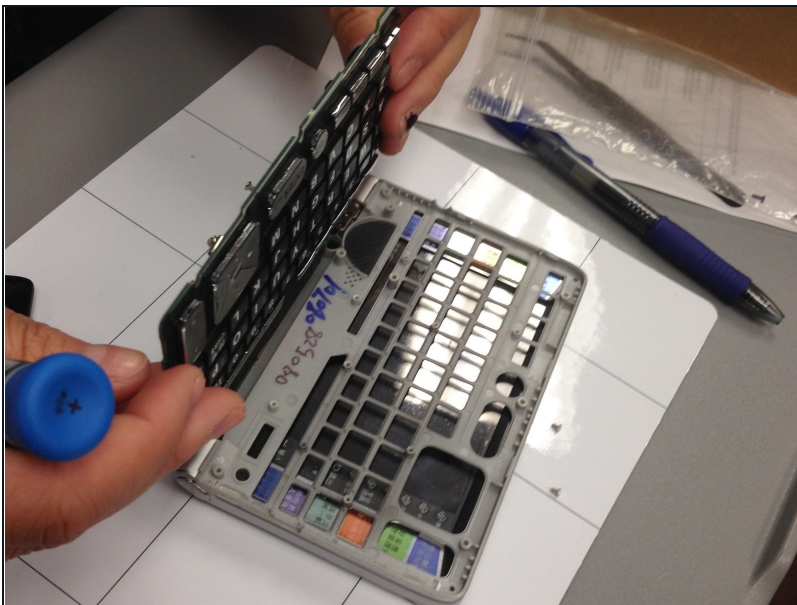
Step 10



⚠ Potential for device damage: All screws must be removed before you begin this step. Do not forcefully pry apart the motherboard with screws still in it because you may damage it.

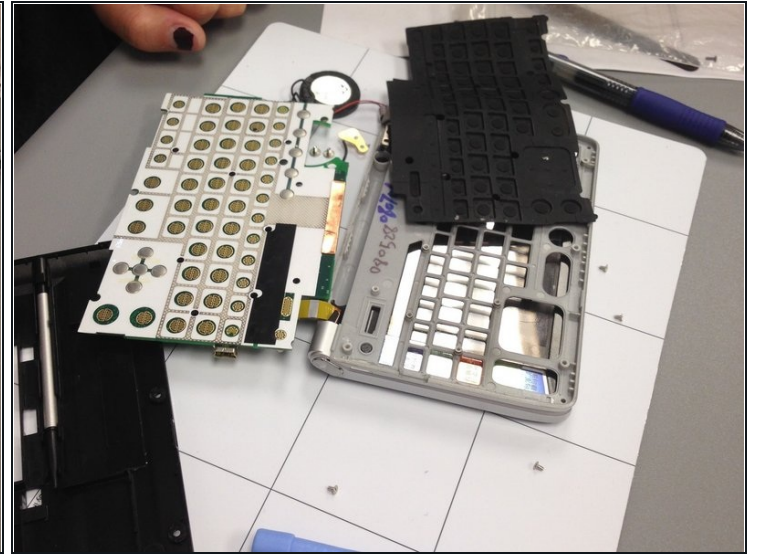
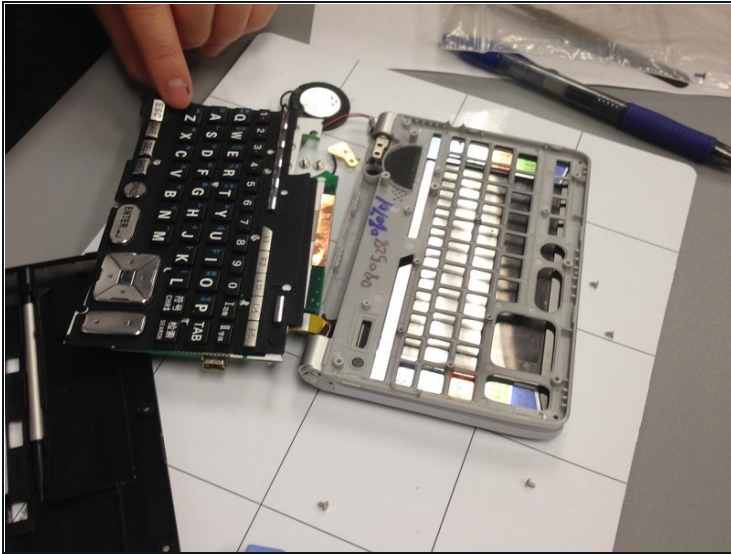
- Carefully pry off the motherboard with an opening tool.

Step 11



- Take the motherboard out of the body frame.

Step 12



- Lift the black keyboard mat off of the motherboard.
 - Replace the motherboard.
-

To reassemble your device, follow these instructions in reverse order.