



Front Bumper Replacement for bObsweep Standard or Pethair

If bObsweep Pethair or Standard runs into error...

Written By: Tatiana



INTRODUCTION

If bObsweep Pethair or Standard runs into error 5 or 6, changing the front bumper can resolve Bob's difficulties.

If you prefer a video walk through:

[video: <https://www.youtube.com/watch?v=oup-TtczlOY&index=12&list=PLisHNtIdgWdt2hG0yBhfLGcQGfig703of>]

TOOLS:

Phillips #2 Screwdriver (1)

Step 1 — bObsweep's cover



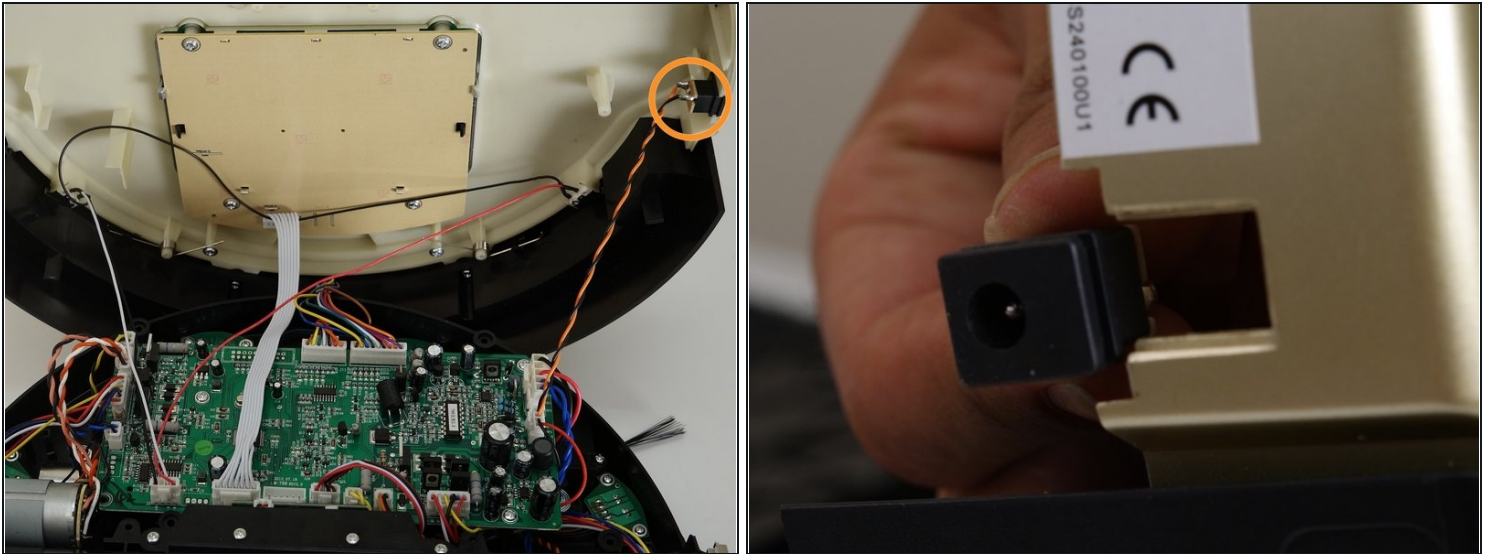
- Flip Bob over and remove the 7 screws around which hold the cover together.
 - Remove the main brush. Unscrew the holder, and lift the brush out. Reminder: Keep this screw separate from the others so you can use it later to reinstall.
- ① Depending on your model, there may be only 6 screws installed on bObsweep.

Step 2



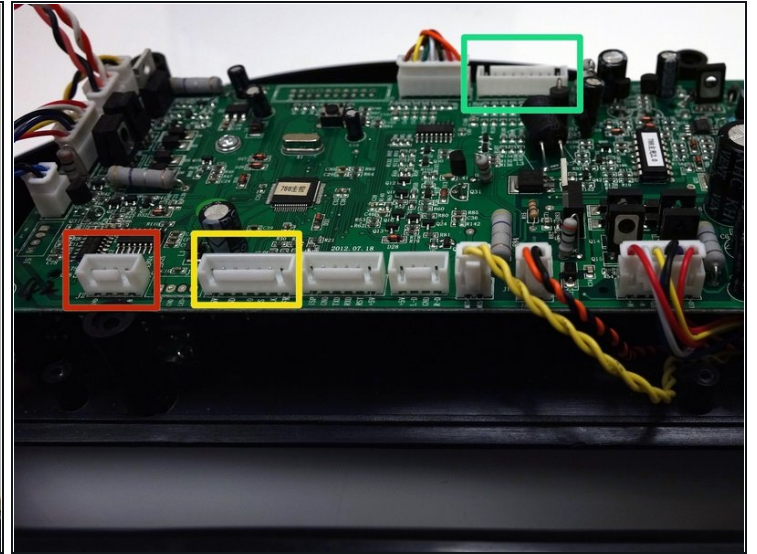
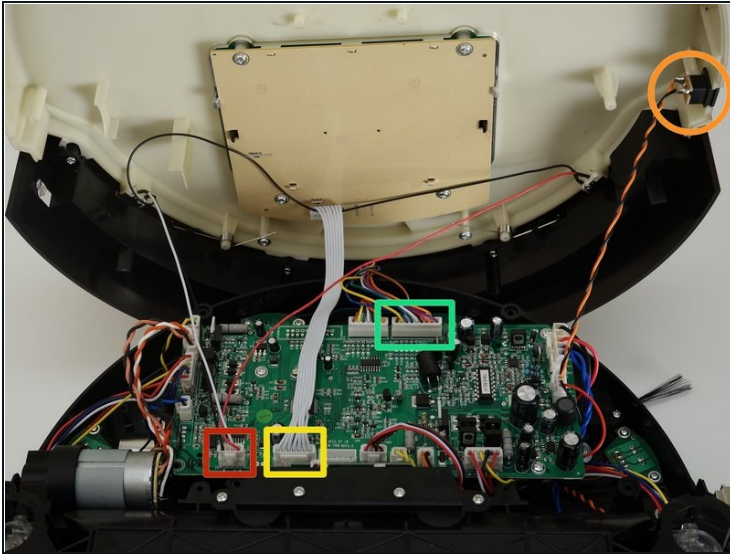
- There are two screw holes inside the brush compartment: one in the centre, one on the left end. Remove both and keep aside for reassembly.
- There are five more screws around bObsweep's edges. Two are installed at the top and bottom, and one on the right end of the main brush.

Step 3



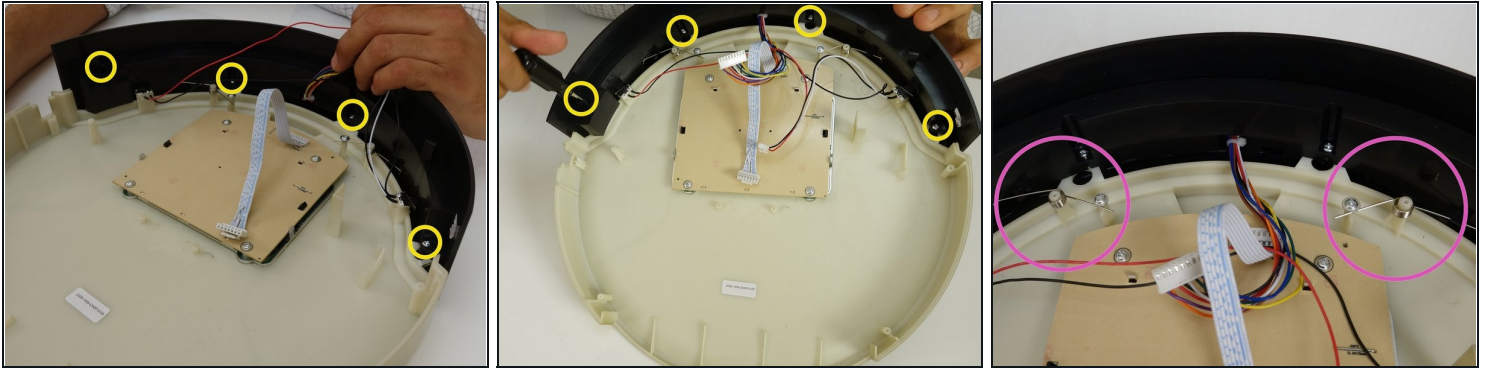
- Flip bOb back over so you can see the screen. Lift the cover up to reveal bObsweep's main board.
- Detach the power inlet from the cover. Grip and slide it out.

Step 4



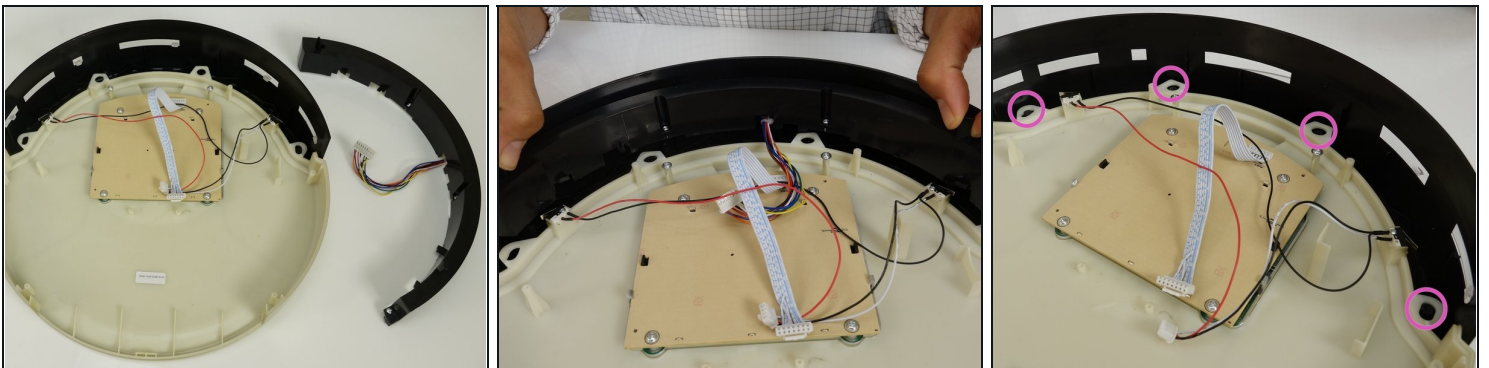
- Remove three circuit plugs from the motherboard. Pinch the small white tab on the side of each circuit plug and pull straight up to release each from the motherboard.
 - 1. On the bottom left corner: a small connector with red, black and white wires.
 - 2. One thick white wire that attaches on the right side of the previous connector.
 - 3. On the top edge of bOb's motherboard: a wide multicoloured connector.
- Place the cover aside and begin your repair.

Step 5 — Front Bumper



- bObsweep standard and pethair have the same bumper attached to their covers.
- To remove the bumper for repair, uninstall all four screws found around the inside edge of the bumper. There is one hidden inside the screw hole on the end, Two in the centre, and one on the other end.
- Remove the bumper springs before lifting the bumper piece up and separating it from Bob.

Step 6



- There will be a wired piece for the wall sensors, then one large exterior cover for the bumper, and a small transparent plastic strip that clips on in the middle.
- Place the large bumper piece underneath bObsweep's cover, so the screw posts sit in the four holes around the cover's front edge.

Step 7



- Lay the wired piece on top, so the screw holes line up with the screw posts. Make sure to line each one up precisely, before installing all four screws.
- Replace the two bumper springs on their posts.
- To Close bObsweep, follow this guide: [Closing bObsweep's cover after repair](#)

To reassemble your device, follow the instructions in the Closing bObsweep Guide: [Closing bObsweep's cover after repair](#)