



# How to Restore Contact Point Electrodes

If the contact points become misshapen or bent, open up bObi and bend each contact point back to its original shape.

Written By: Chelsea



---

## INTRODUCTION

Reshaping the contact point electrodes which hold bObi's dustbin in place can resolve installation and bin latching difficulties.



### TOOLS:

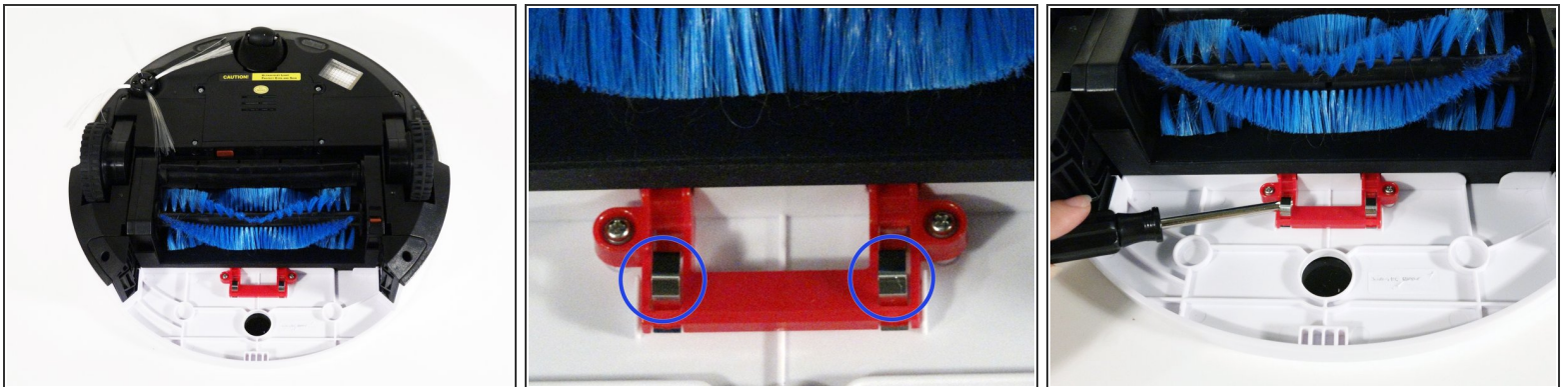
- [Phillips #2 Screwdriver](#) (1)
-

## Step 1 — How to Restore Contact Point Electrodes



- Remove bObi's dustbin:
  - Push down on the button found on bObi's back to release the dustbin.

## Step 2



- Inside bObi are two contact point electrodes, secured with a small red fastener and two screws.
- Use a screwdriver to reach underneath the electrodes and pull upward gently to bend them back to the correct shape.

## Step 3



- When the electrodes are fixed, slide the dustbin back into bObi. The HEPA filter side of the dustbin should face down.
- Ensure it locks in place, and the contact point electrodes will line up correctly, so bObi can resume functioning.

To reassemble your device, follow these instructions in reverse order.