



removing the Dell Inspiron 1150 Speakers

Written By: Lauren

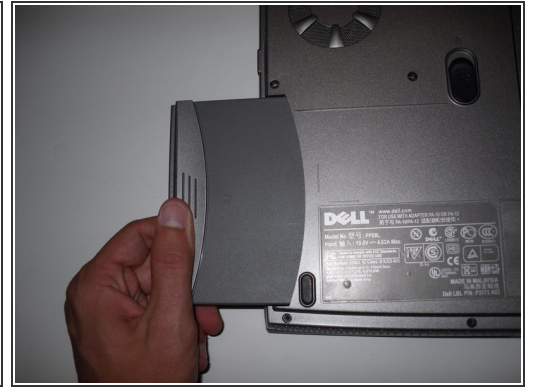
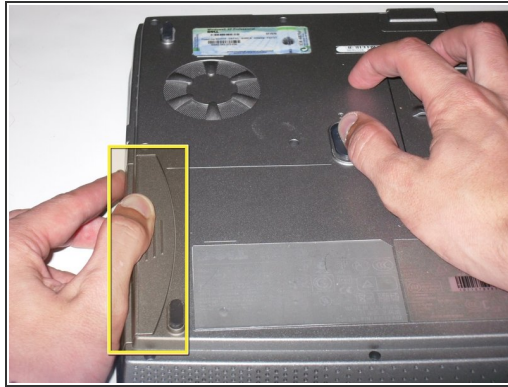
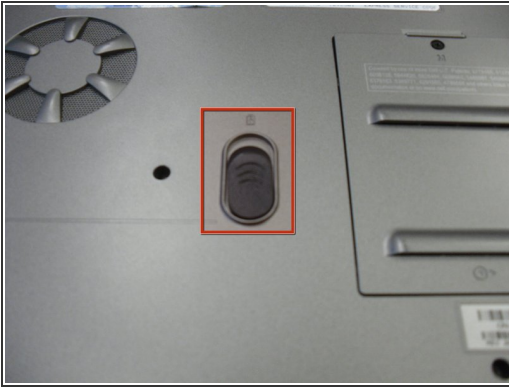




TOOLS:

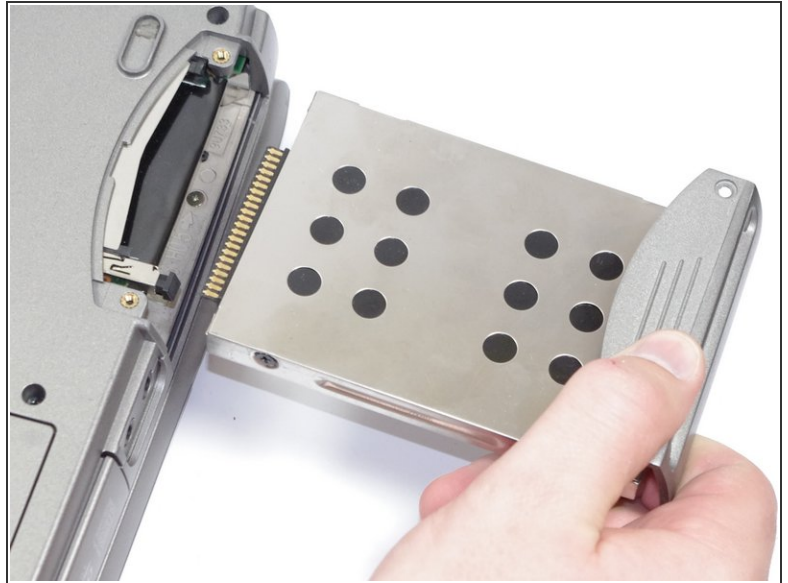
- [Phillips #1 Screwdriver](#) (1)
 - [Spudger](#) (1)
-

Step 1 — Removing Dell Inspiron 1150 Battery



- Place the laptop upside down on a clean, flat surface.
- Locate the battery release button with the padlock symbol above it.
- Slide the battery release button towards the padlock symbol and hold it there. Note that the button is spring loaded and will return if released.
- ⓘ The battery is now released from the battery compartment.
- Gently remove the battery from the side of the laptop.

Step 2 — Hard Drive



- Place laptop upside down on a clean flat surface.
- Remove 2ea M2.5 x 5 mm screws.
- Pull the HDD from main body of the laptop.

Step 3 — Optical Drive (Based on Dell Service Manual)



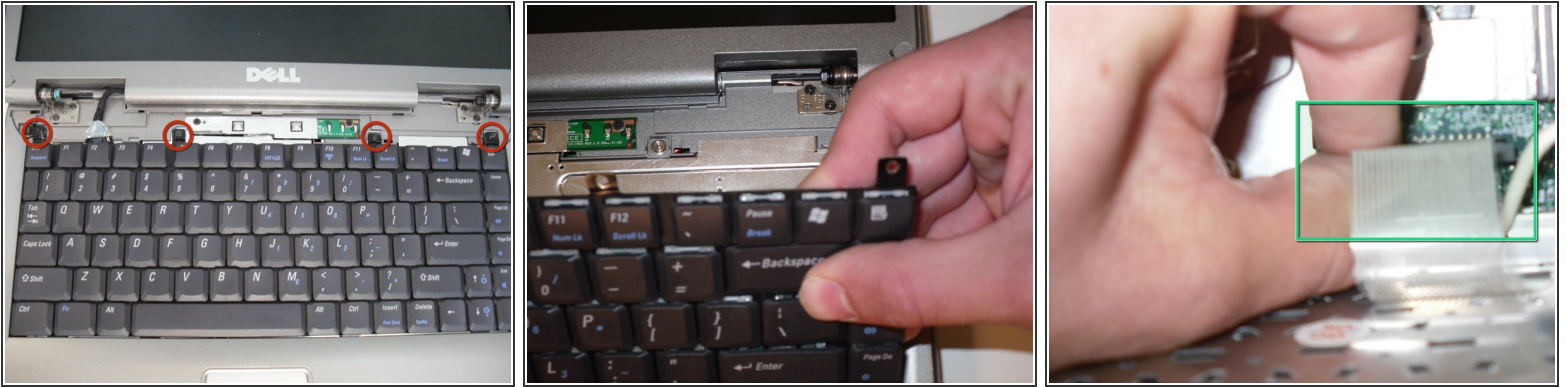
- Place laptop upsid down on a clean flat work surface.
- Remove the Philips M2.5 x 8 mm screw
- Loosen the screw that holds the memory compartment closed
- remove the memory module compartment cover
- Press the Optical Drive release lever to the right and the optical drive should slide out of the case

Step 4 — Keyboard



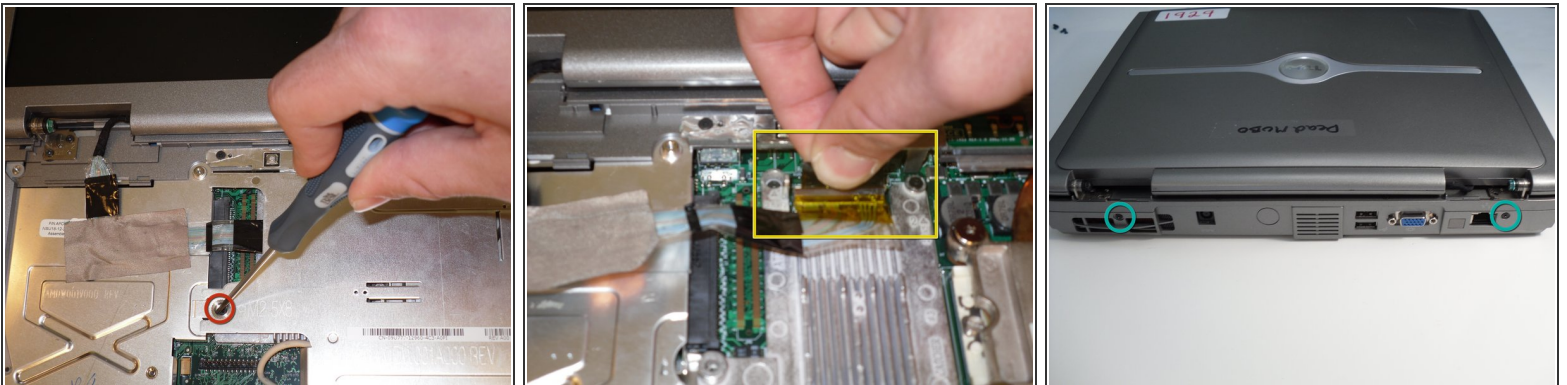
- Use a spudger to lift the notched right edge of the hinge cover, and pry it loose
- ⚠ You need to lay the LCD screen down flat to allow the hinge cover to be lifted off
- Lift the hinge cover off and set aside

Step 5



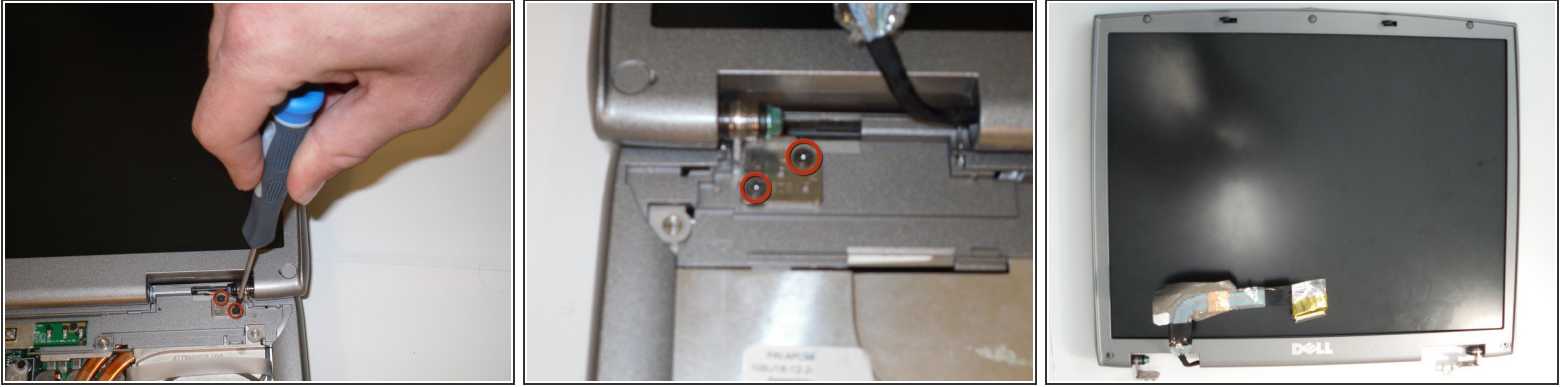
- Remove 4ea M2 x 3mm keyboard screws
- Lift up keyboard from the rear to expose the connector below
- Disconnect the keyboard ribbon cable from the motherboard

Step 6 — Display Assembly



- Remove 1ea M2.5 x 8mm screw holding the EMI shield in place
- Remove the EMI shield to expose the LCD ribbon cable
- Gently pull up on the tab to disconnect the ribbon cable from the main board
- Close the lid carefully and remove the two M2.5 x 5-mm screws from the rear of the case

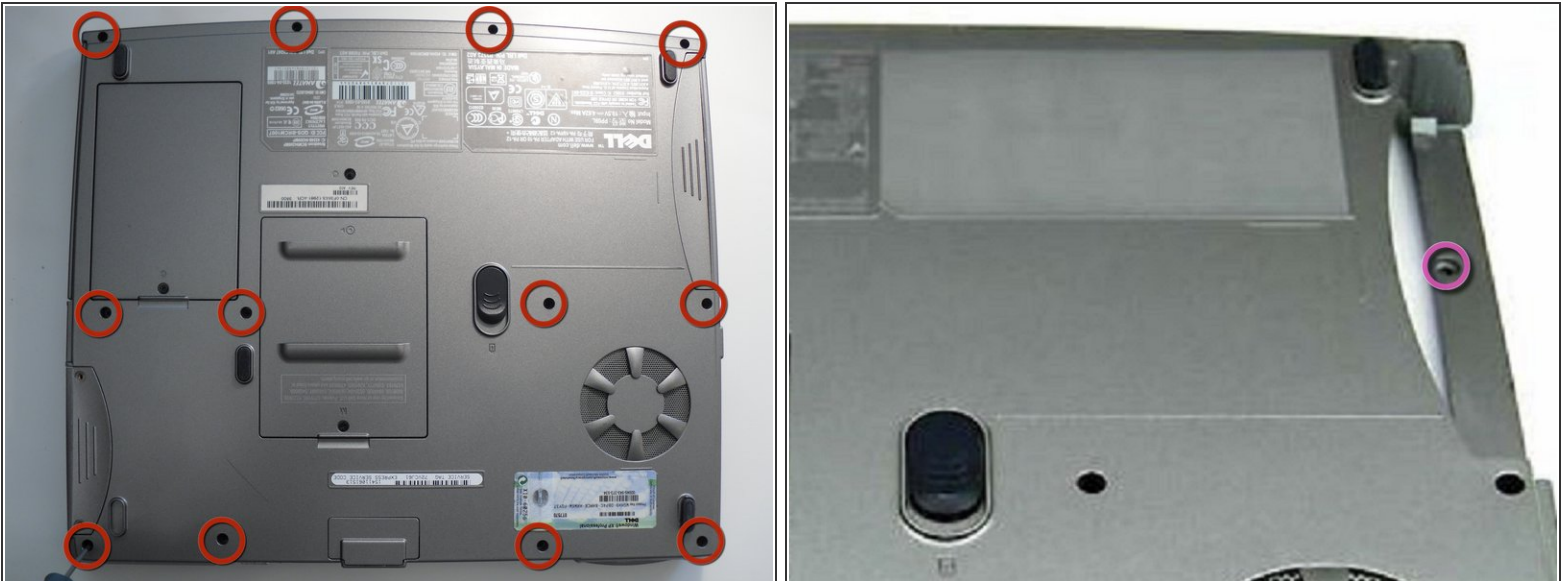
Step 7



⚠ Open the lid and support the Display Assembly while performing the next step to avoid it falling down when the hinge screws are removed

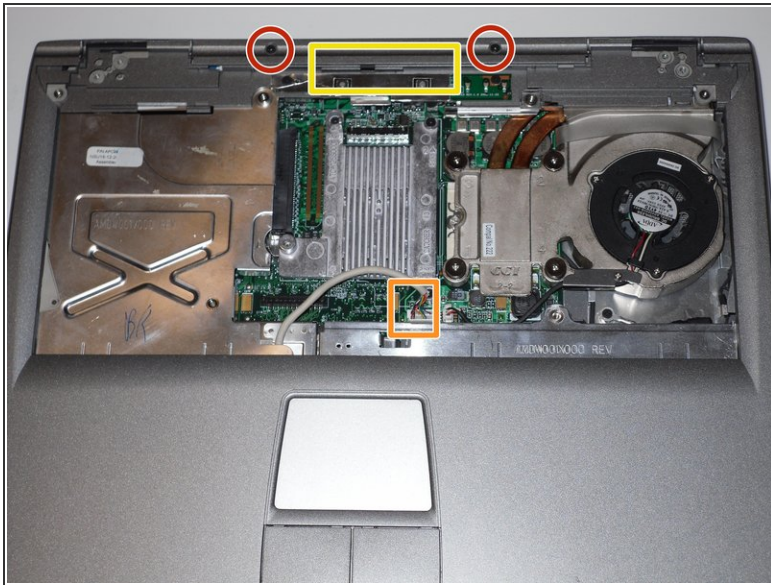
- Remove 2e M2.5 x 5mm screws from each hinge bracket
- The Display Assembly can now be lifted free of the laptop body

Step 8 — Removing Dell Inspiron 1150 Palm Rest



- Position the computer upside down.
- Remove the twelve M2.5 x 8-mm screws.
- Remove the M2.5 x 4-mm screw from the battery bay

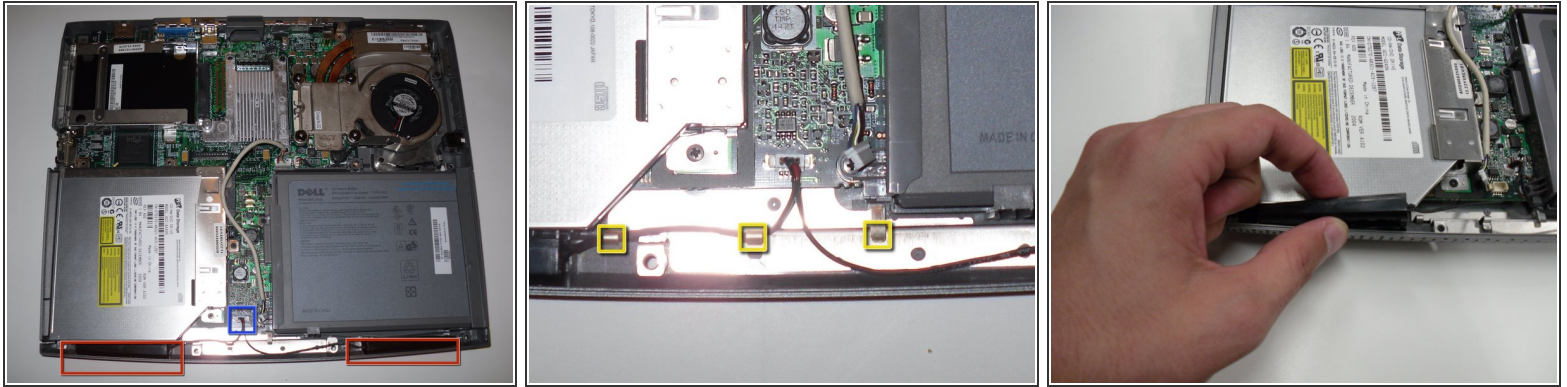
Step 9



- Position the computer keyboard side up.
- Remove the two M2.5 x 5-mm screws from the top of the palm rest.
- Disconnect the mouse pad cable from the main board.
- Separate the palm rest from the base by lifting its inside edge. Start at the back center.

⚠ Be careful to avoid damaging the palm rest while separating it from the base.

Step 10 — removing the Dell Inspiron 1150 Speakers



- The speakers are located along the front of the laptop.
- Disconnect the speaker cables from the main board
- Unclip the speaker cables from the wire retainers along the front
- Remove the speakers by pulling them straight up and out of the base

To reassemble your device, follow these instructions in reverse order.