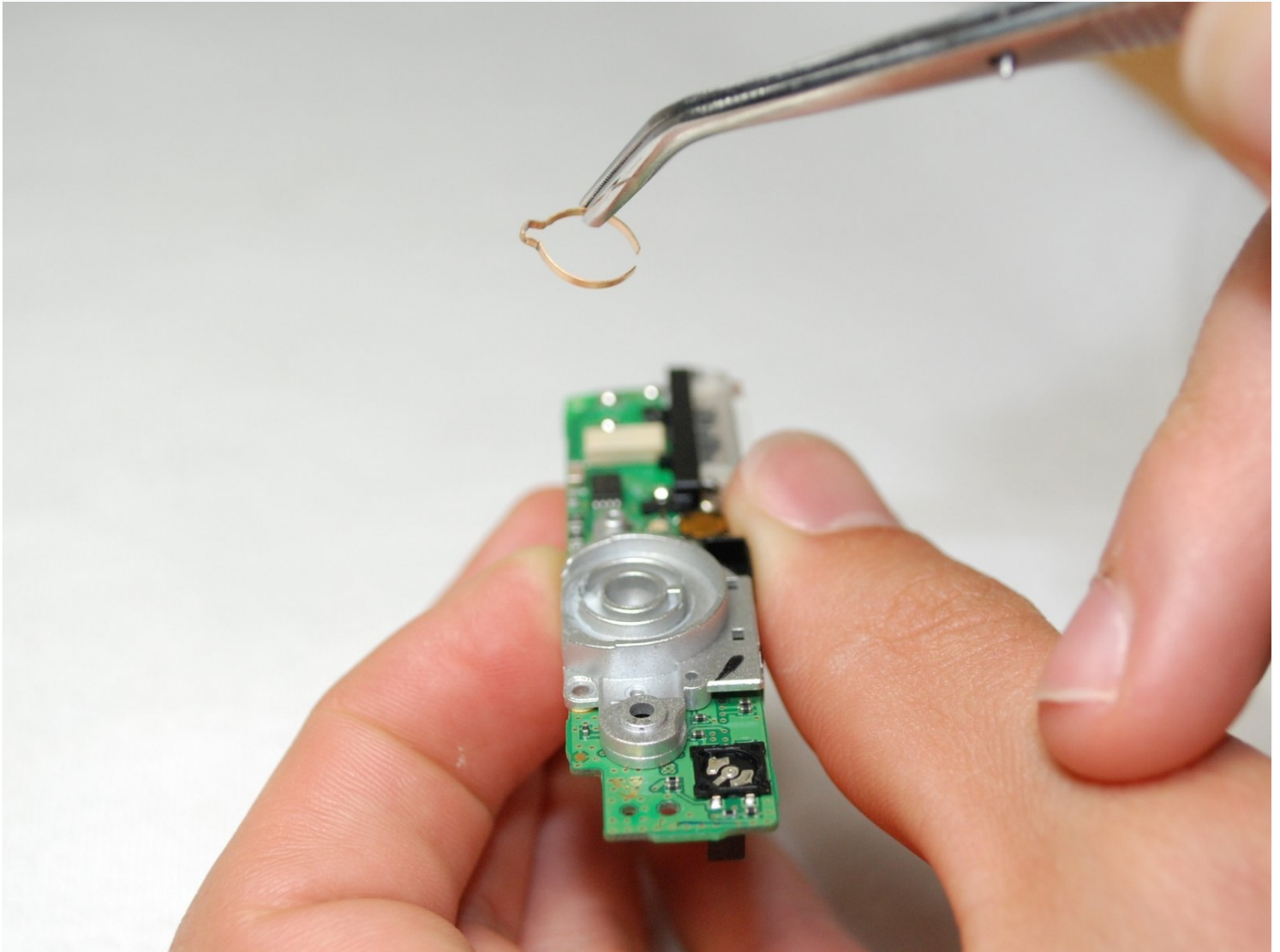




# Samsung L100 Setting Knob Spring

A guide to help replace the spring inside of...

Written By: andyhe



# INTRODUCTION

A guide to help replace the spring inside of the setting knob on top of the camera.

## 🔧 TOOLS:

Small Plastic Spudger (1)  
Phillips #0 Screwdriver (1)

## ⚙️ PARTS:

Flash Circuit Board (1)

### Step 1 — Removing Back Cover



- Remove the **six** external screws from the camera using a **Phillips #0** screwdriver.
- After the screws has been removed, the bottom of the back half of the external case should be loosened from the camera.

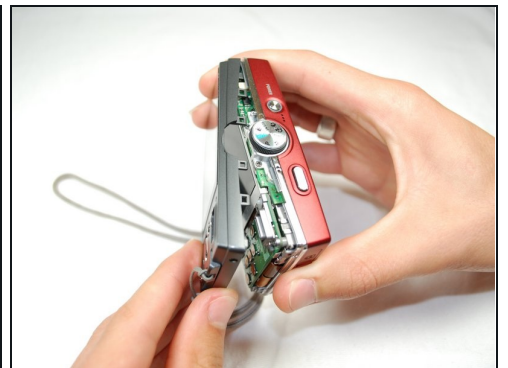
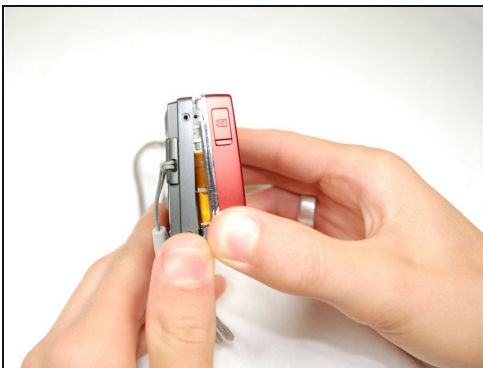
⚠️ Be careful, make sure you don't lose the screws.

## Step 2



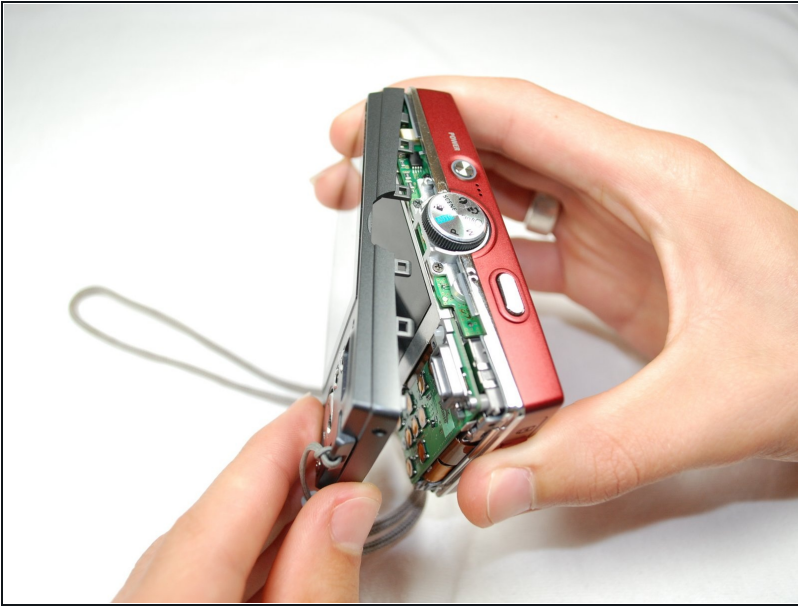
- Open the battery cover that's located on the bottom right side of the camera and carefully remove the battery.

## Step 3



- Slide your fingernail or a plastic spudger in the groove from the bottom to the top right side of the camera.

## Step 4



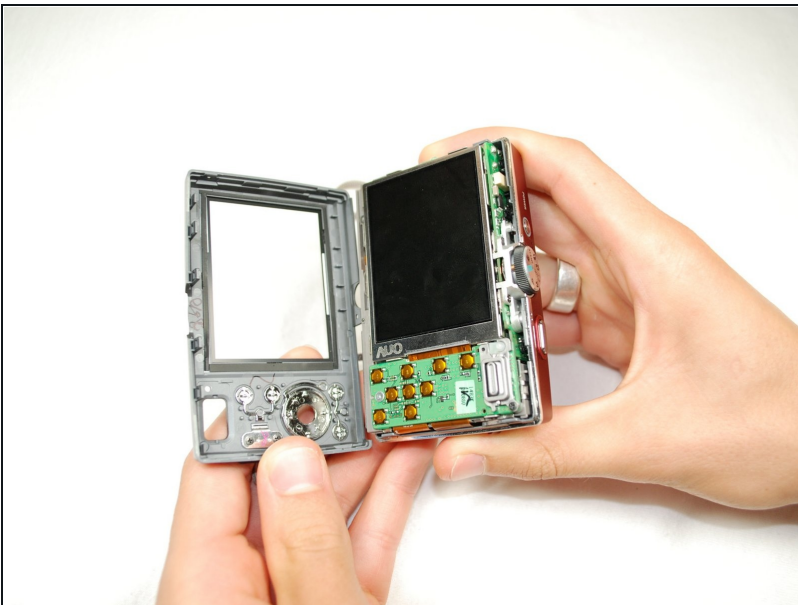
- Carefully squeeze the top right corner of the camera and pry off the external cover.

ⓘ If you hear a "cracking" sound. This is normal.

- Continue to pull the external cover and it will come off cleanly.

⚠ Be cautious of the flash capacitor. It carries an electrical charge, that may give you an unpleasant shock.

## Step 5



⚠ Carefully pull off the back cover, parts behind the back of the case might fall out.

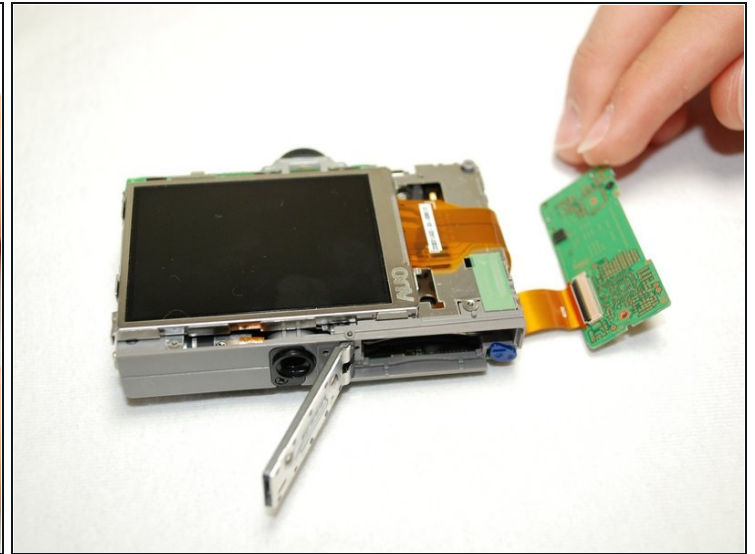
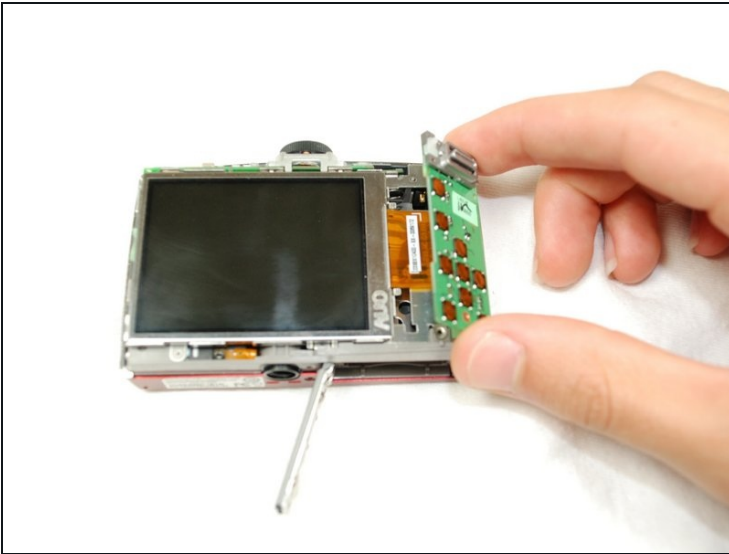


## Step 6 — Flash Circuit Board



- Remove the screws holding the circuit board.
- After you remove the screws, carefully remove the circuit board.

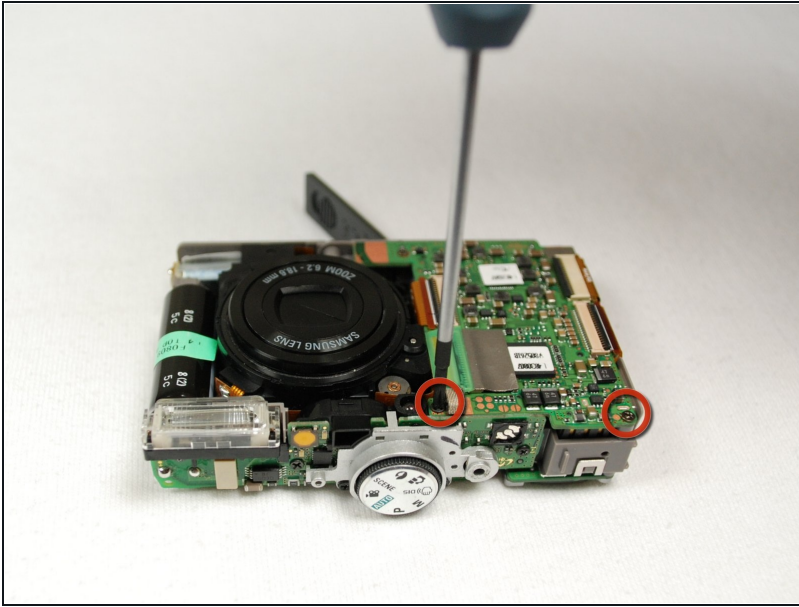
## Step 7



- Remove the front cover, it comes off easily.

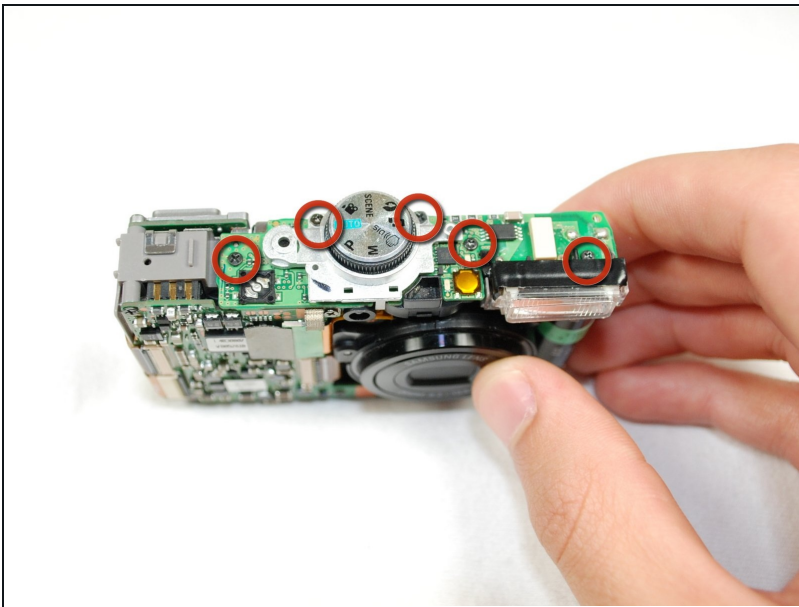
⚠ Buttons might fall out when you remove the front cover.

## Step 8



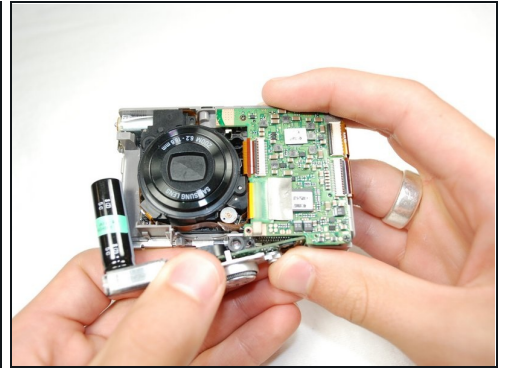
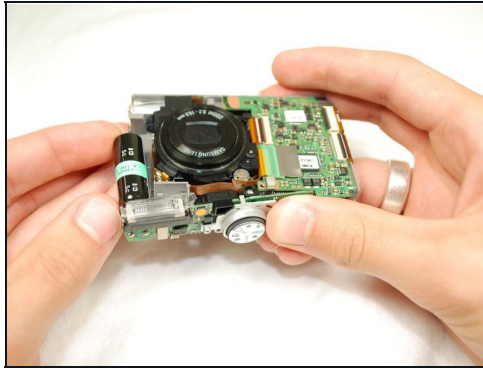
- Face camera towards you.
- Remove the two screws from circuit board on the left side of the lens.

## Step 9



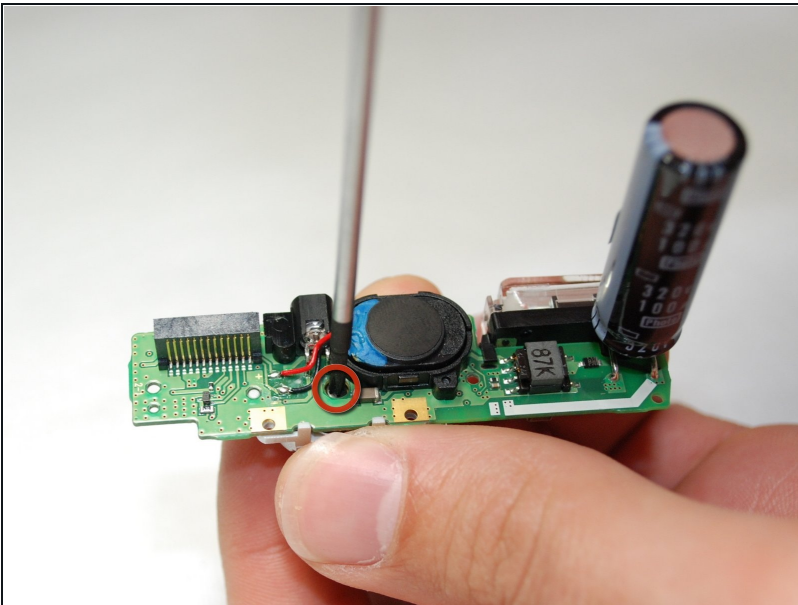
- Carefully hold up the circuit board, while it's still connected to the camera.
- Remove all five screws that's on top of the camera.

## Step 10



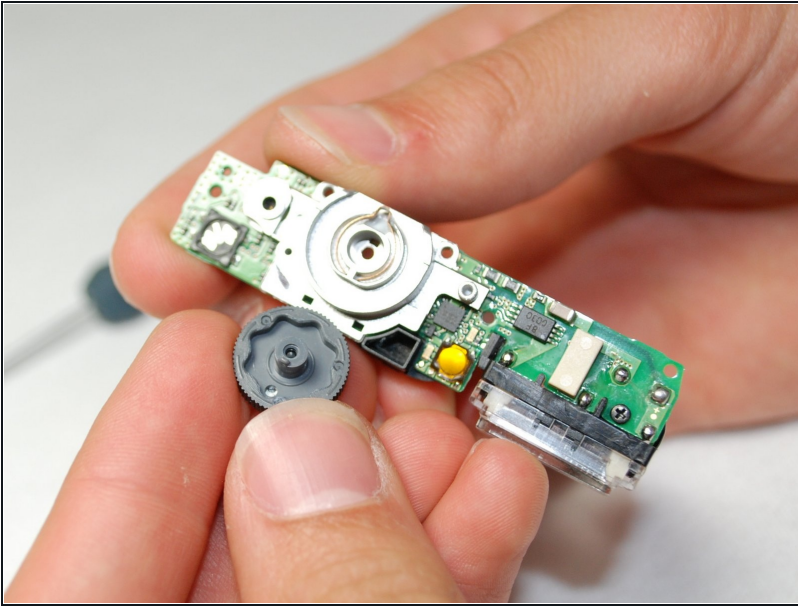
- Carefully push up the top of the circuit board.
- Pull up flash circuit board from top of camera.

## Step 11 — Setting Knob Spring



- Face the bottom of the Flash Circuit board towards you.
- Remove the one screw that's located on the left side of the lens.

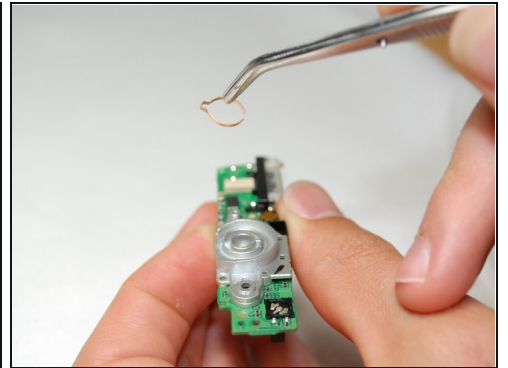
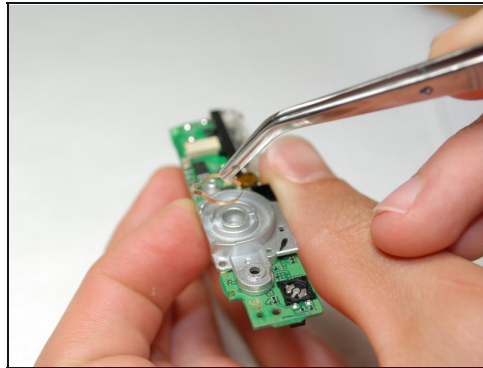
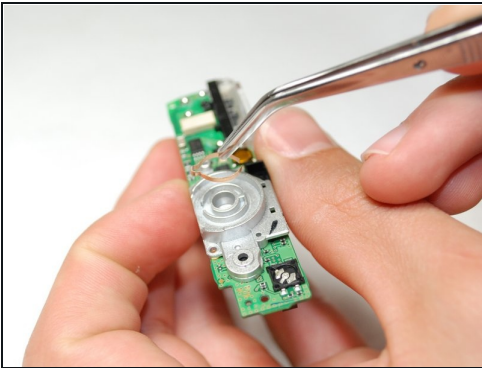
## Step 12



- Take the flash circuit board and turn it over.
- Remove the plastic setting knob.

⚠ Make sure to keep copper spring inside of the slot.

## Step 13



- Take out and replace the Setting Knob Spring with [tweezers](#).

---

To reassemble your device, follow these instructions in reverse order.