



LG TP 1100 Earpiece Replacement

This guide provides instructions on replacing...

Written By: Johnny Inlow



INTRODUCTION

This guide provides instructions on replacing the LG TP 1100 earpiece. This may alternatively be used for other devices in the LG TP Legacy Series and most phones manufactured from this era of electronics.

Proper earpiece function produces clear and audible sounds into the user's ear. This allows the user to listen and understand information that is being expressed by the complimentary broadcasting phone. However, over time or with collected damage (i.e. exposure to extreme temperatures, water damage, or dropping the phone) the speaker may start to malfunction. This can range anywhere from minor distortions in sound quality to a total loss of audio.

Pro Tip: Wires attached to the headphone and LCD display are fragile and are easily disconnected. Be sure to keep all adjacent wires intact during disassembly and final speaker connection.

Warning: To prevent the possibility of an electric shock exposure, please be sure to power off the device fully prior to disassembly.

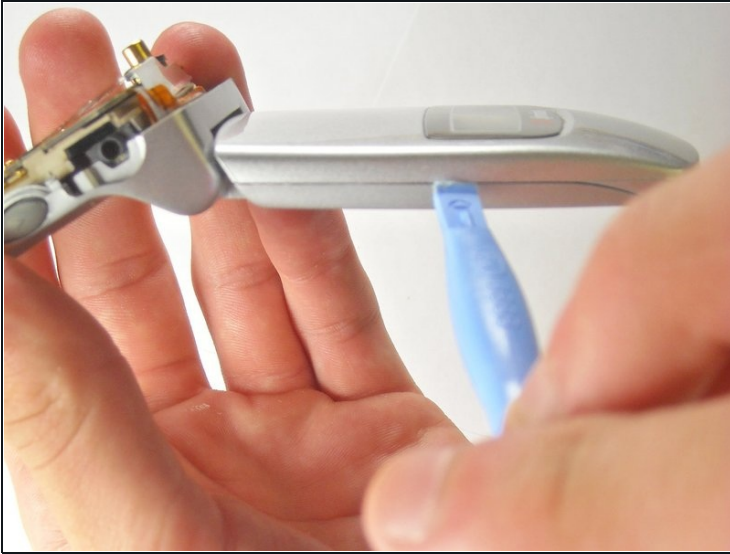
For relevant information or a more comprehensive understanding of the LG TP 1100, please reference the [user manual](#) for this device.

TOOLS:

[iFixit Opening Tool](#) (1)

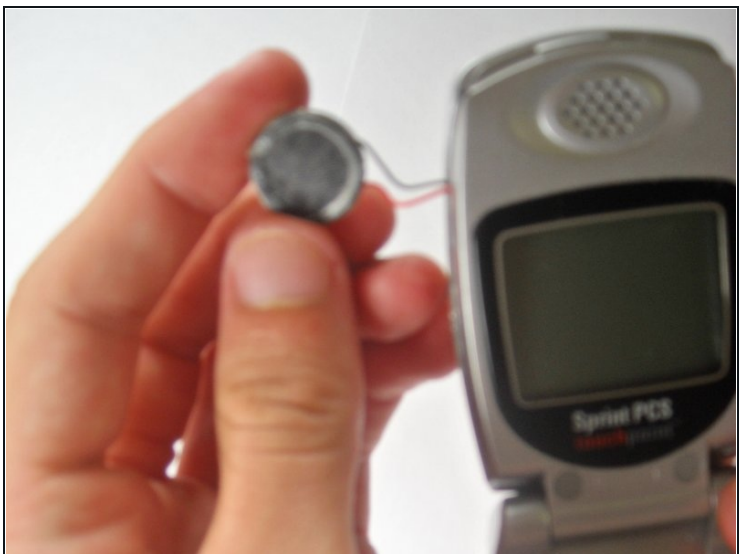
[Spudger](#) (1)

Step 1 — Earpiece



- Slide opening tool into crevasse and pry open top cover
 - Do so on both sides
 - Do not completely remove cover

Step 2



- Pry out speaker with heavy-duty spudger

To reassemble your device, follow these instructions in reverse order.