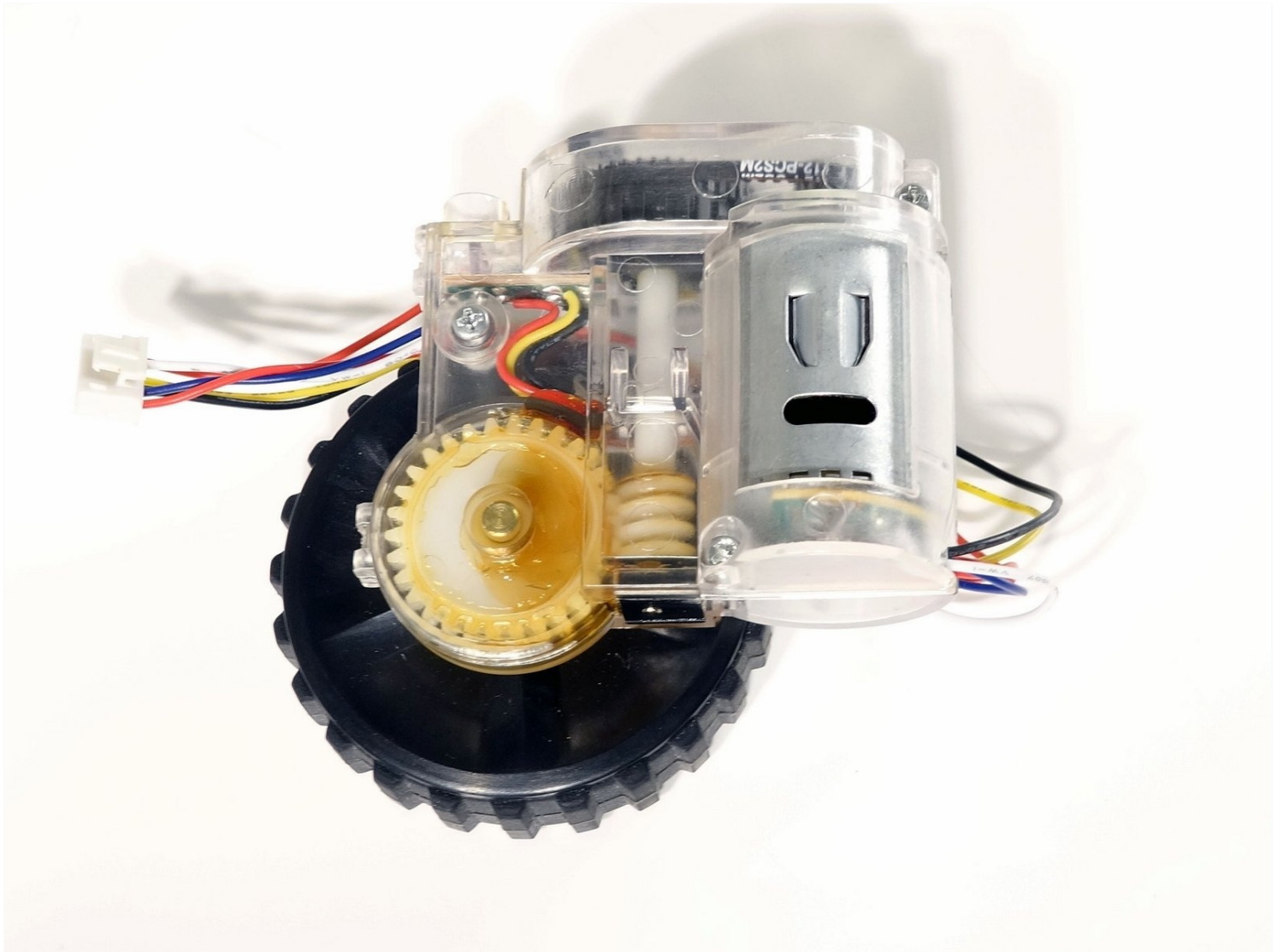




bObsweep Robotic Vacuum Cleaner Left or Right Wheel Replacement

This guide outlines how to change the left or...

Written By: Tatiana



INTRODUCTION

This guide outlines how to change the left or right wheel inside bObsweep, found on the sides of the main brush. These steps differ from removing and repairing the front wheel.

Video instructions:

[video: <https://www.youtube.com/watch?v=Hwh10Mn4cXo>]



TOOLS:

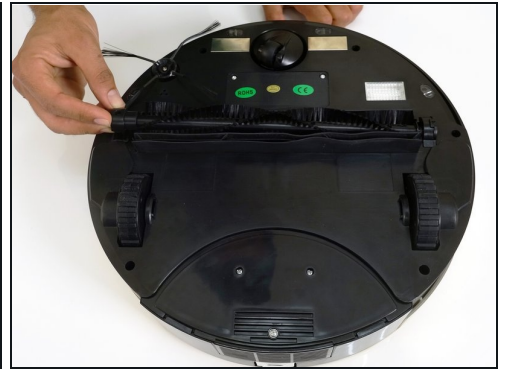
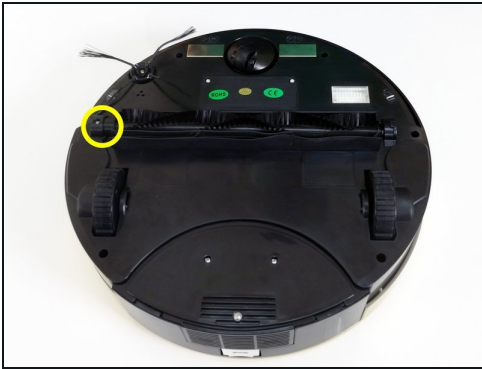
Phillips #2 Screwdriver (1)



PARTS:

Right or Left Replacement Wheel (1)

Step 1 — bObsweep's cover



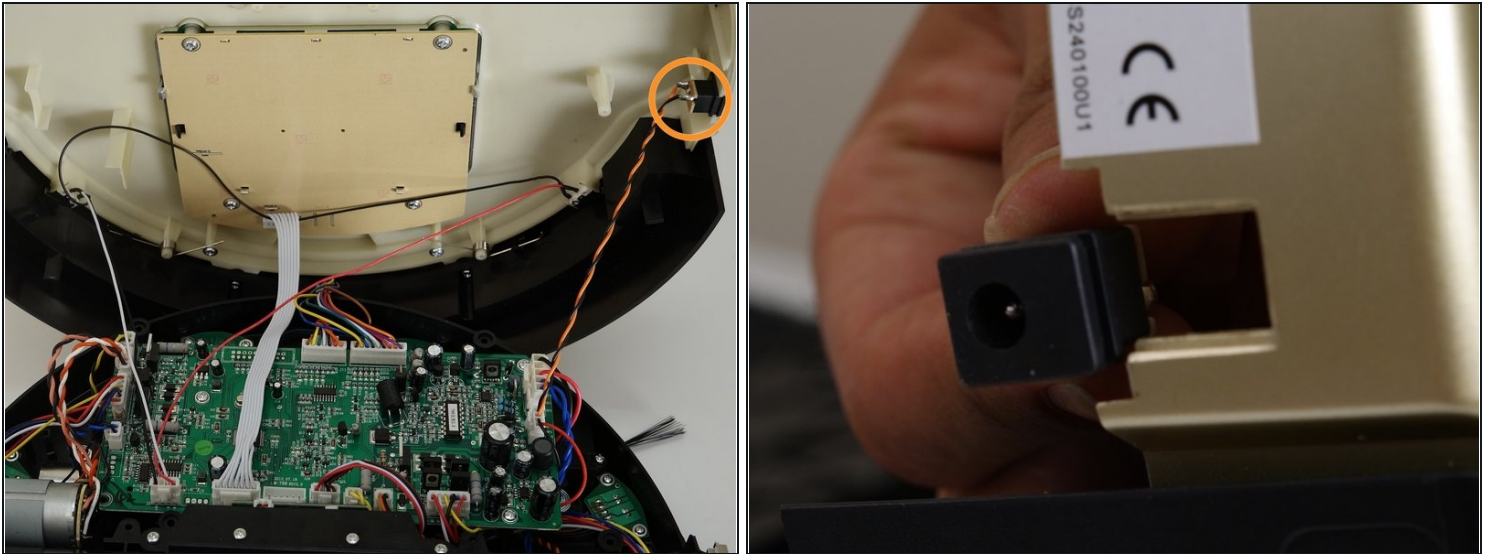
- Flip Bob over and remove the 7 screws around which hold the cover together.
 - Remove the main brush. Unscrew the holder, and lift the brush out. Reminder: Keep this screw separate from the others so you can use it later to reinstall.
- ① Depending on your model, there may be only 6 screws installed on bObsweep.

Step 2



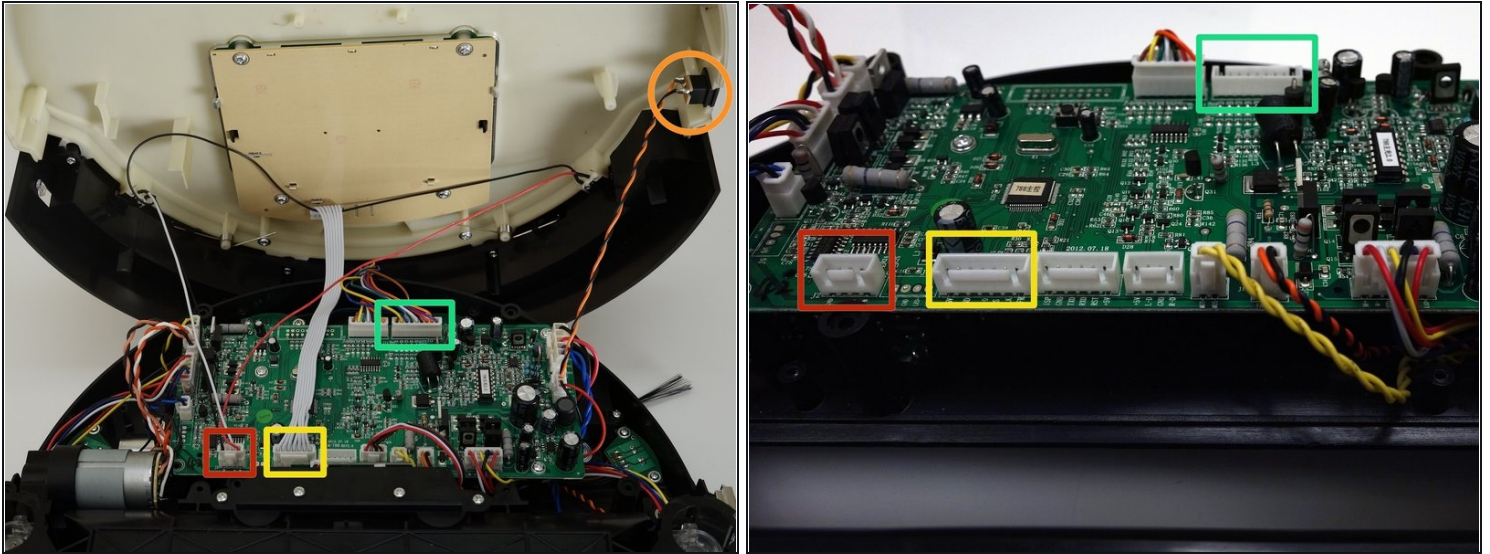
- There are two screw holes inside the brush compartment: one in the centre, one on the left end. Remove both and keep aside for reassembly.
- There are five more screws around bObsweep's edges. Two are installed at the top and bottom, and one on the right end of the main brush.

Step 3



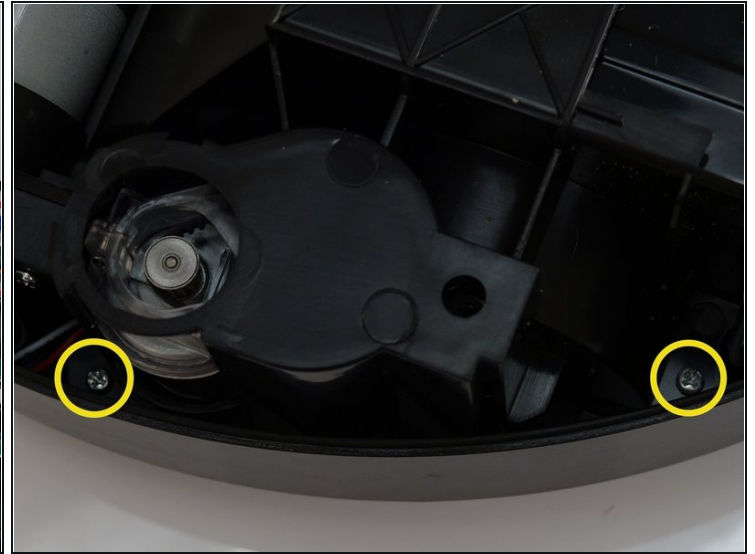
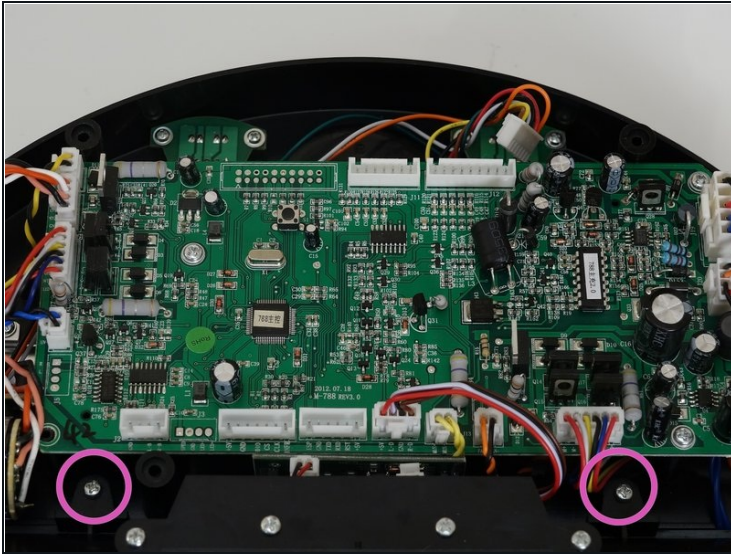
- Flip bOb back over so you can see the screen. Lift the cover up to reveal bObsweep's main board.
- Detach the power inlet from the cover. Grip and slide it out.

Step 4



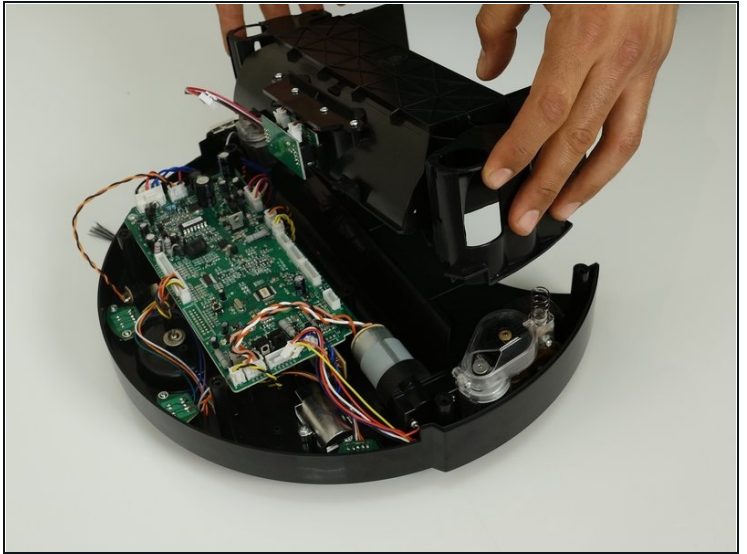
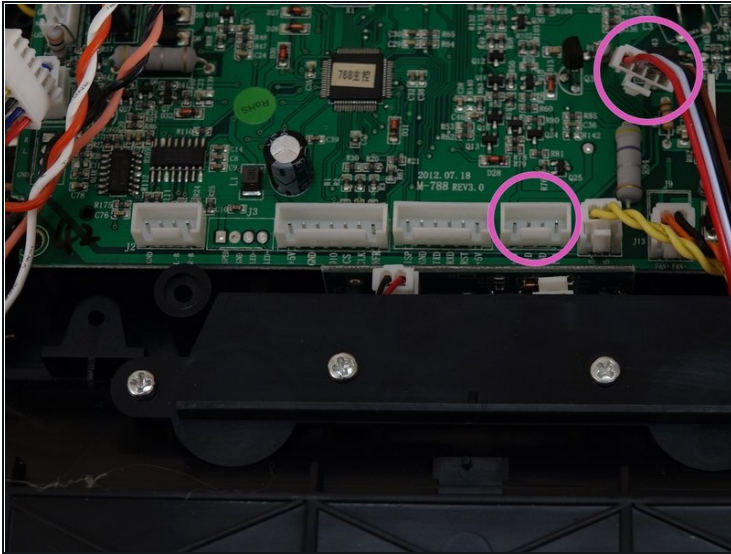
- Remove three circuit plugs from the motherboard. Pinch the small white tab on the side of each circuit plug and pull straight up to release each from the motherboard.
 - 1. On the bottom left corner: a small connector with red, black and white wires.
 - 2. One thick white wire that attaches on the right side of the previous connector.
 - 3. On the top edge of bOb's motherboard: a wide multicoloured connector.
- Place the cover aside and begin your repair.

Step 5 — Left or Right wheel



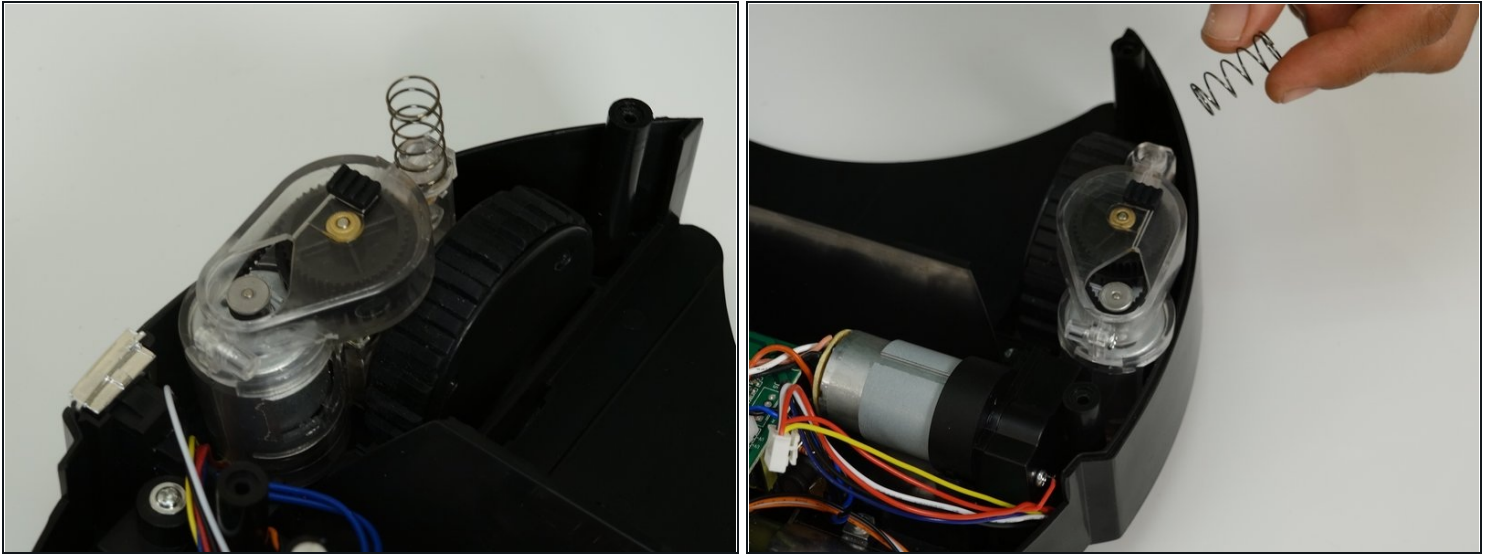
- After removing bObsweep's cover, there will be a secondary cover over the wheels that must be removed. Uninstall all six screws holding it in place.
 - There are two screws on the sides of each wheel, one above and one below.
 - There are two screws just beneath the main board's bottom edge.

Step 6



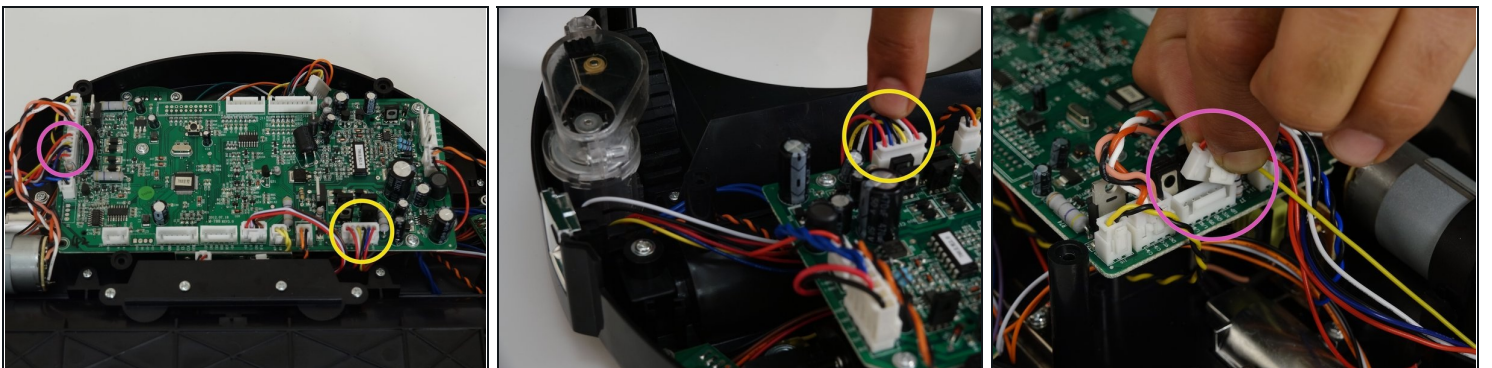
- Remove the circuit plug which secures this cover to the main board. It is a small connector with red, black, brown and white wires.
- When all screws and circuitry are disconnected, lift the wheel cover up and put aside for later.
- ① Keep all items removed from bObsweep organized for easy reinstallation after repairs are complete.

Step 7



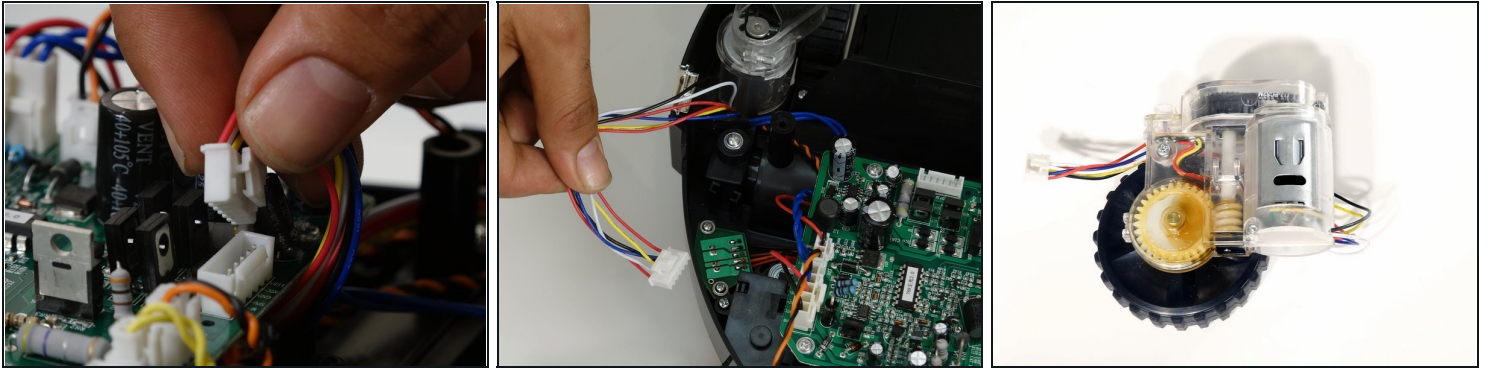
- You will see bObsweep's left and right wheels exposed.
- There is a spring sitting atop each wheel. Remove the spring from the wheel you wish to replace, and put aside for later.

Step 8



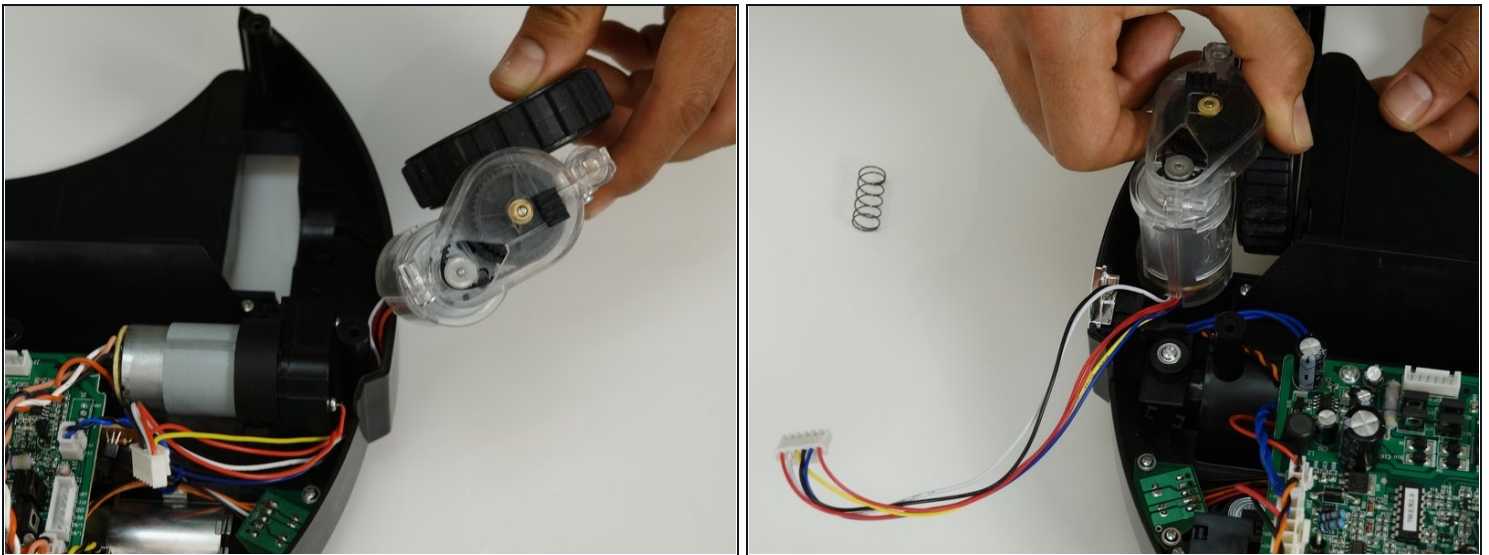
- Lift the appropriate wheel up and you will see where it plugs in to the motherboard.
 - The multicolored wires for bOb's right wheel connect in the centre of the motherboard's left edge.
 - But the circuit plug for the left wheel connects to the bottom edge of the motherboard, closer to its right side.

Step 9



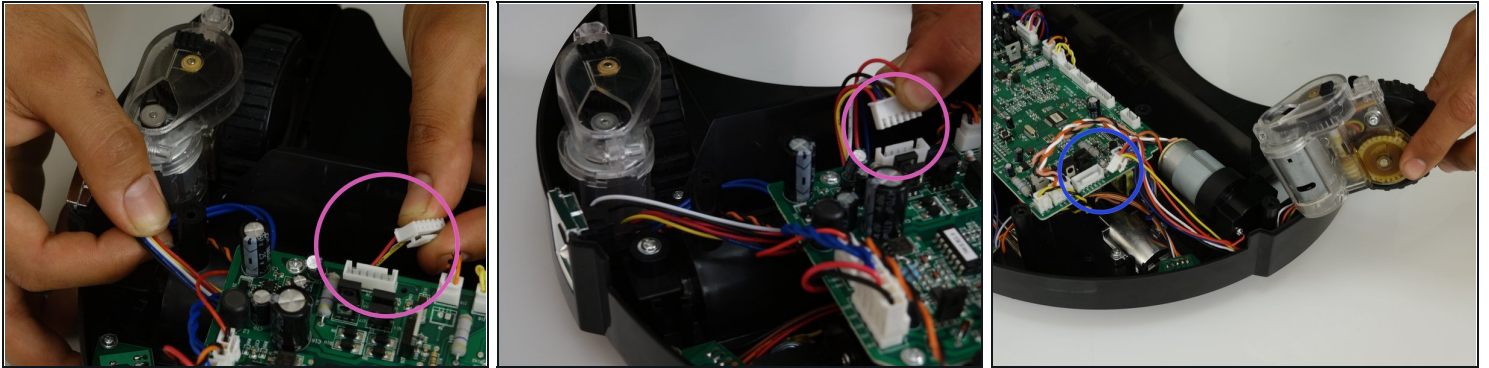
- Pinch the white tab on the side of the correct circuit plug to release it from the motherboard, and pull up to disconnect completely.
- The old left or right wheel will be fully detached from bObsweep.

Step 10



- Once the old wheel is removed, place the new one in its place.
 - The motor should be closer to the outside while the wheel sits closer to the interior.

Step 11



- Make sure to feed the wires for the circuit plug along the bottom of bObsweep, so they do not move when vacuuming later.
- For the right wheel, you will need to feed the wires to the right of the screw post, under the motherboard, and then back up, before you plug it into the motherboard's lower edge.
- For the left wheel, feed the wires along bOb's bottom and as far to the left as possible before plugging it back in to the motherboard.

Step 12



- Replace the spring on your new wheel.
- When the circuit plug is secured, lay the wheel cover back down and apply pressure so it fits inside bObsweep properly.
- ① You may wish to hold your vacuum up slightly while pushing into place, so the wheels do not interfere with the cover.
- Reinstall the six screws that hold the wheel cover in place, then close bObsweep (see prerequisite guide).

To reassemble your bObsweep, see the closing bObsweep guide.