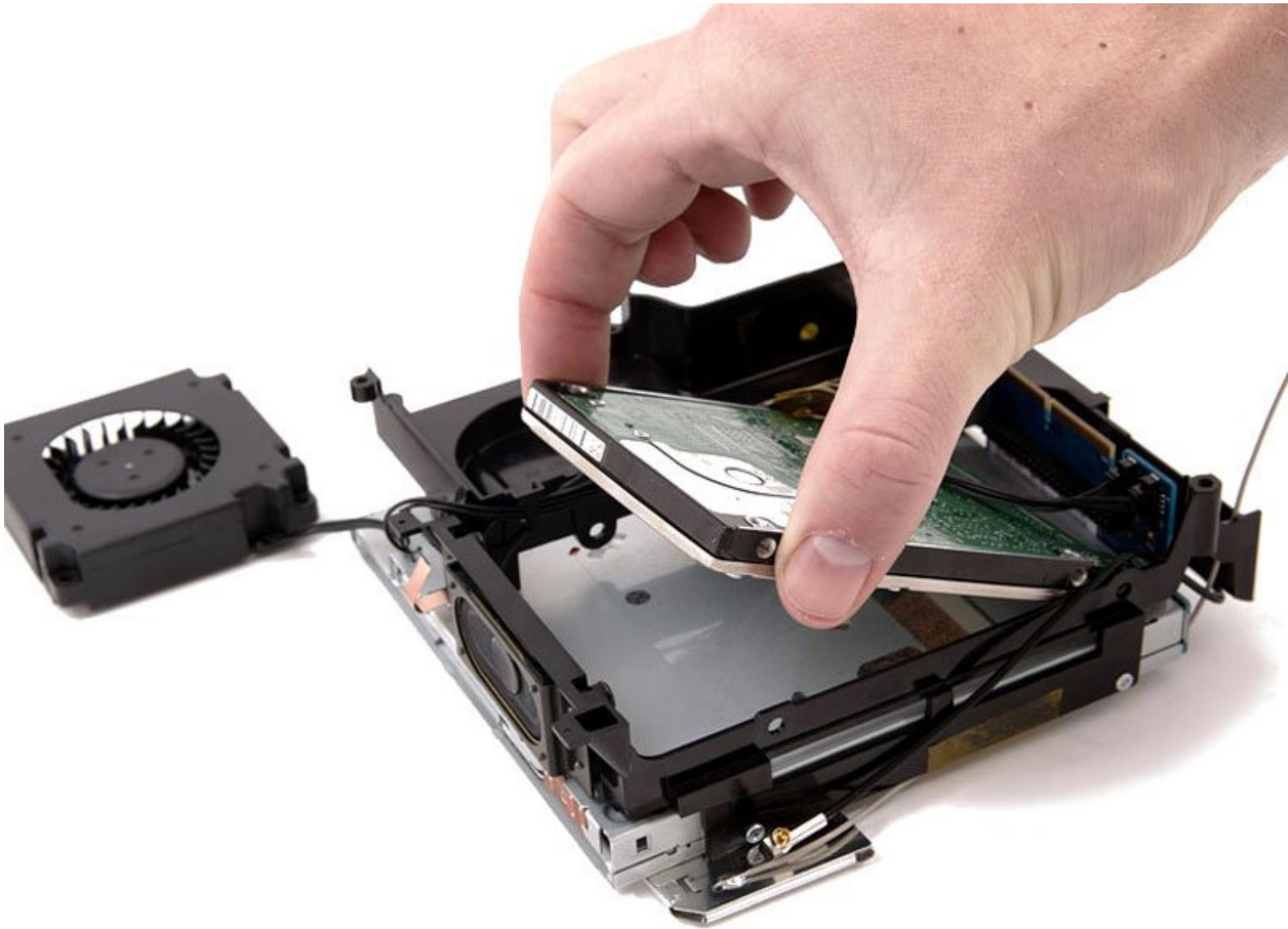




# Mac mini (PowerPC) Hard Drive Replacement

Written By: iRobot



# INTRODUCTION

Upgrade your storage with a new hard drive.



## TOOLS:

- [Phillips #0 Screwdriver](#) (1)
- [Jimmy](#) (1)
- [Phillips #1 Screwdriver](#) (1)
- [Spudger](#) (1)



## PARTS:

- [160 GB 5400 RPM ATA Hard Drive](#) (1)
- [320 GB 5400 RPM ATA Hard Drive \(New\)](#) (1)

## Step 1 — Top Housing



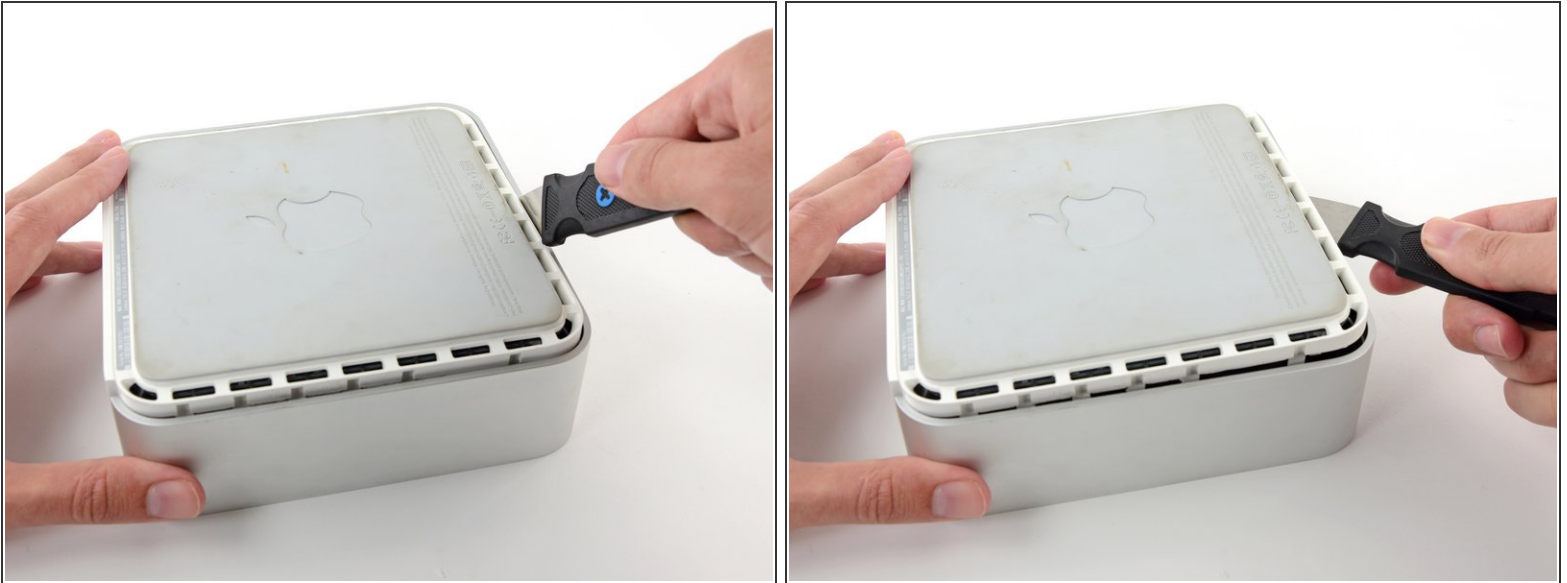
- Power down your Mac mini, disconnect all of the cables, and flip it over.
- Insert the Jimmy into the crack between the aluminum top housing and the plastic lower housing.
- The Jimmy should reach a stop about 3/8" down.

## Step 2



- Gently bend the Jimmy outwards to pry the crack open a little larger and lift the lower housing up a small amount.
- ⓘ There are several plastic clips on the lower housing that fit into a channel in the aluminum top housing. Your goal is to use the Jimmy to push these clips inward enough to free them from the channel, while gently pulling up on the lower housing.

### Step 3



- Once you have the first side free, rotate the Mac mini and start prying up on the front edge.
- Use the same prying motion to both bend the clips inward and lift the lower housing up out of the top housing.

### Step 4



- You may need to move the Jimmy along the edge to pry up all of the clips. Be patient and do a little bit at a time.

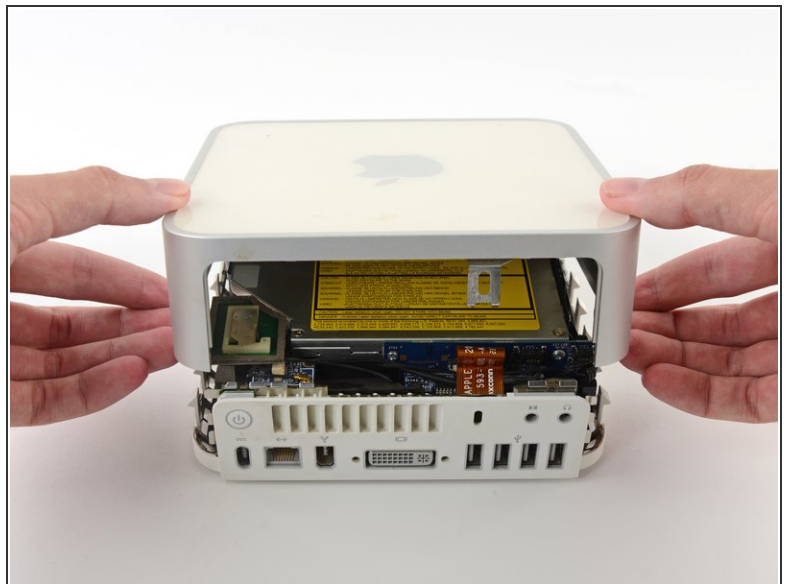


## Step 5



- Keep working around the perimeter, freeing the clips along the final edge.

## Step 6



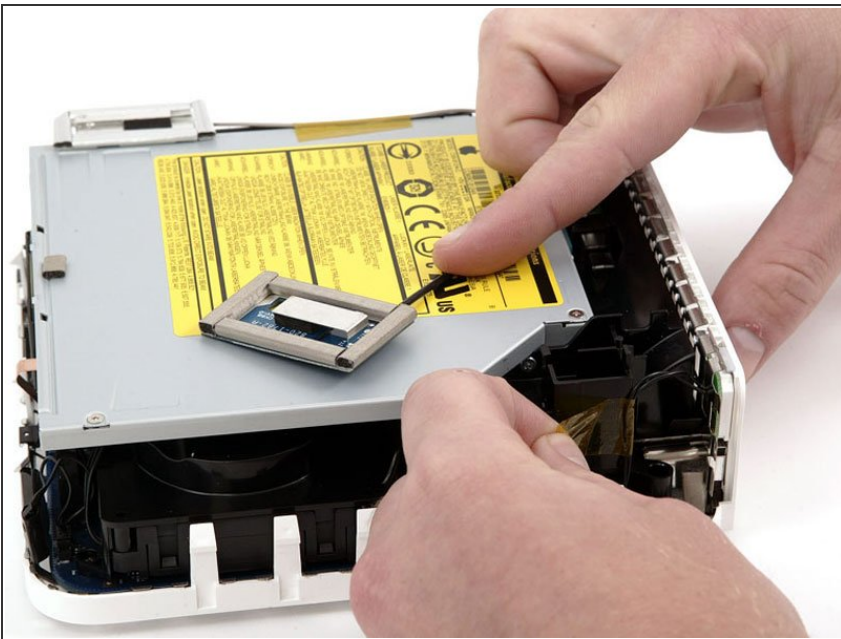
- Flip the Mac mini back over and lift the top housing off of the lower housing.

## Step 7 — Mass Storage Unit



- ❗ If your mini does not have Airport installed, then skip this step.
- Grasp the Airport antenna board and lift it off of the two plastic posts holding it in place. You may need to push back the black plastic tab jutting through the lower left corner of the board.

## Step 8



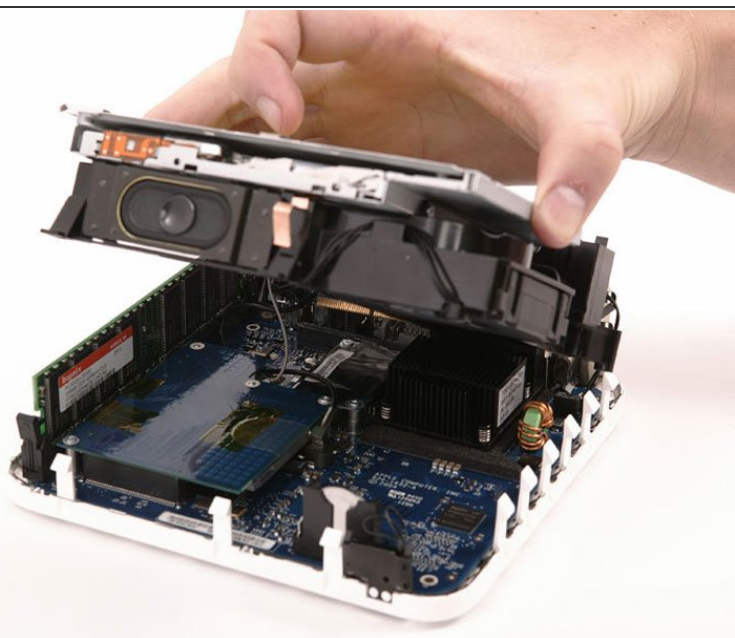
- Remove the yellow tape securing the power button cable to the black plastic framework.

## Step 9



- Remove the three black Phillips screws securing the plastic framework to the logic board and lower case.

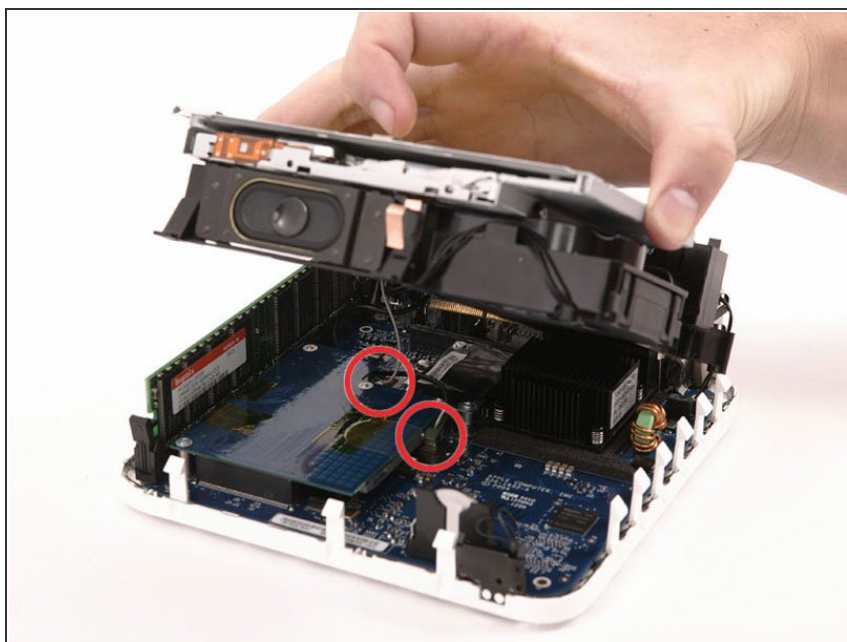
## Step 10



- Grasp the optical drive and mass storage unit in one hand and lift up enough so that you can see beneath it.

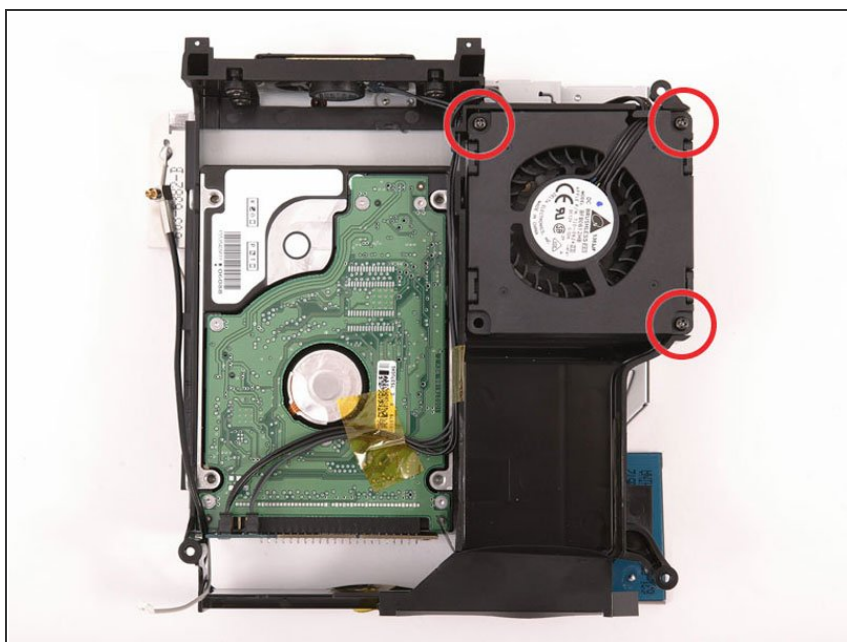


## Step 11



- ❗ If your mini has neither an Airport card nor a Bluetooth board, you can simply lift the optical drive up and away. Otherwise, you need to disconnect the Airport and/or Bluetooth antenna cables first.
- With your free hand, pull the Bluetooth cable up from Bluetooth board and unplug the Airport antenna cable from the right of the Airport card. Caution: both of these connections are very small. When re-assembling unit after repair, you may want to remove the two screws holding the airport card to the assembly and lift the card up and out to re-attach the cables.

## Step 12 — Hard Drive



- Remove the three long, black Phillips screws from the corners of the fan. These screws are strongly threaded, and will offer significant resistance.
- ★ There is no screw in the bottom left corner.

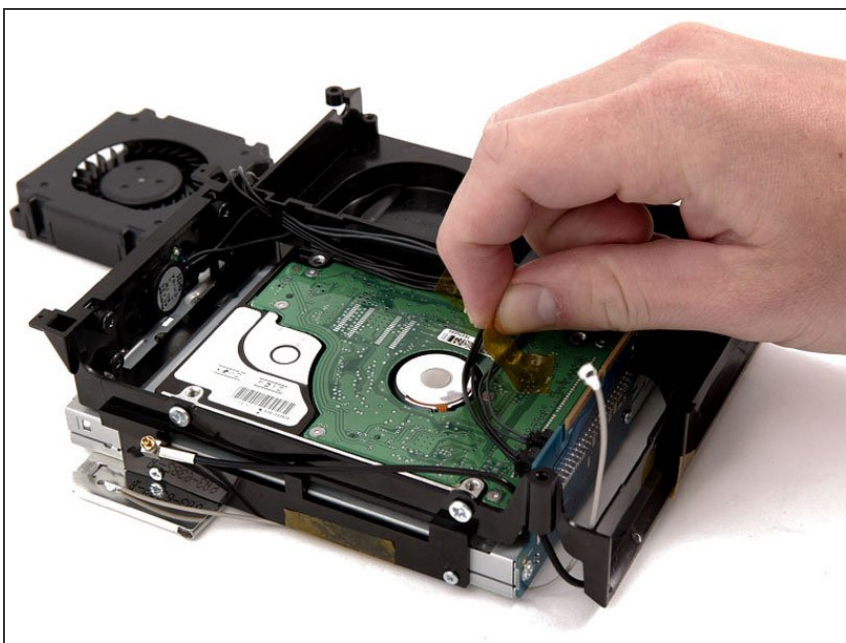


## Step 13



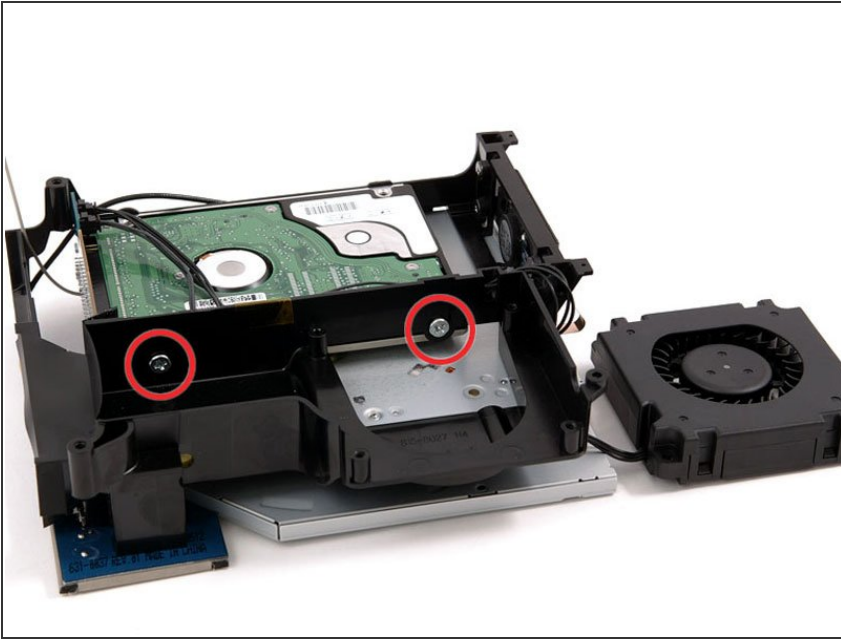
- Lift the fan out of the computer.

## Step 14



- Peel up the yellow tape securing the speaker and fan cables to the bottom of the hard drive.

## Step 15



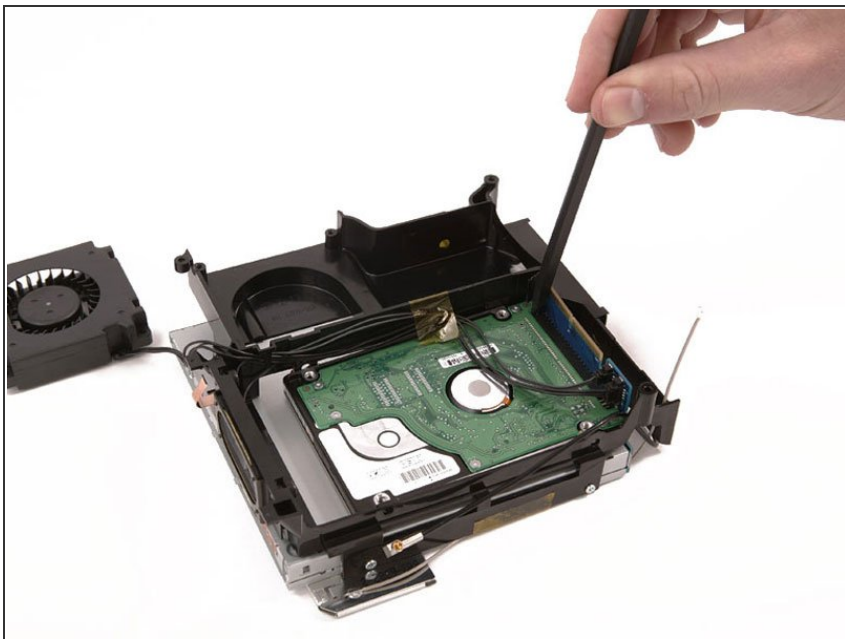
- Use a #1 Phillips to remove the two screws attaching the right side of the hard drive to the plastic framework. You'll need to angle the screwdriver down to get access to the lower right screw. Be sure to apply steady force to the screws and turn slowly so as not to strip them.

## Step 16



- Use the same screwdriver and steady force to remove the two screws attaching the left side of the hard drive to the plastic framework.

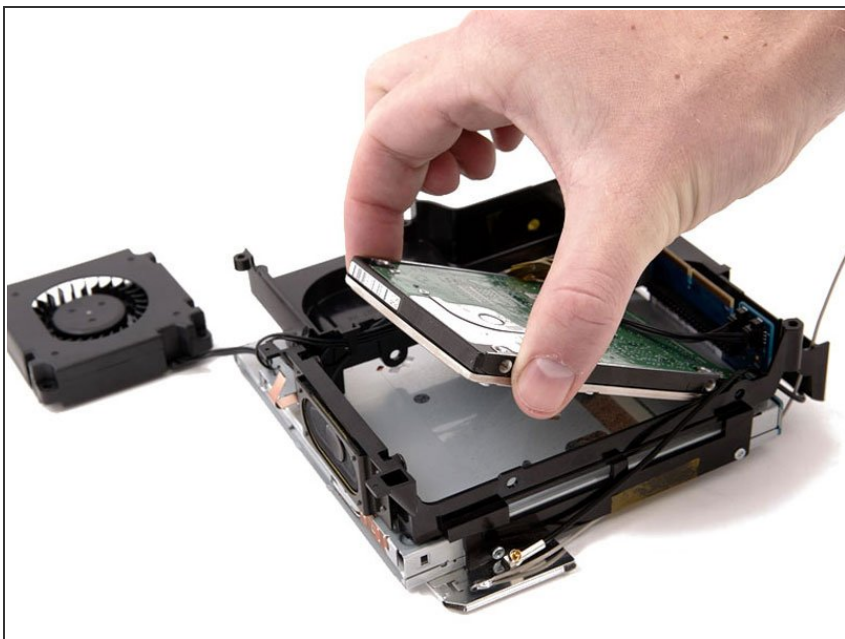
## Step 17



- Use a spudger to pry the hard drive away from the interface board. Wedge the flat end of the spudger between the interface board and the far right side of hard drive and wiggle back and forth until the hard drive slides out about a sixteenth of an inch. Then move to the other side and repeat the procedure. Go back and forth until the hard drive slides free.

- ★ When reinstalling the hard drive, make sure that you don't slide the top pins into the lower row of holes.

## Step 18



- Lift the hard drive out of the assembly.

To reassemble your device, follow these instructions in reverse order.

This document was generated on 2021-06-15 09:26:45 PM (MST).

