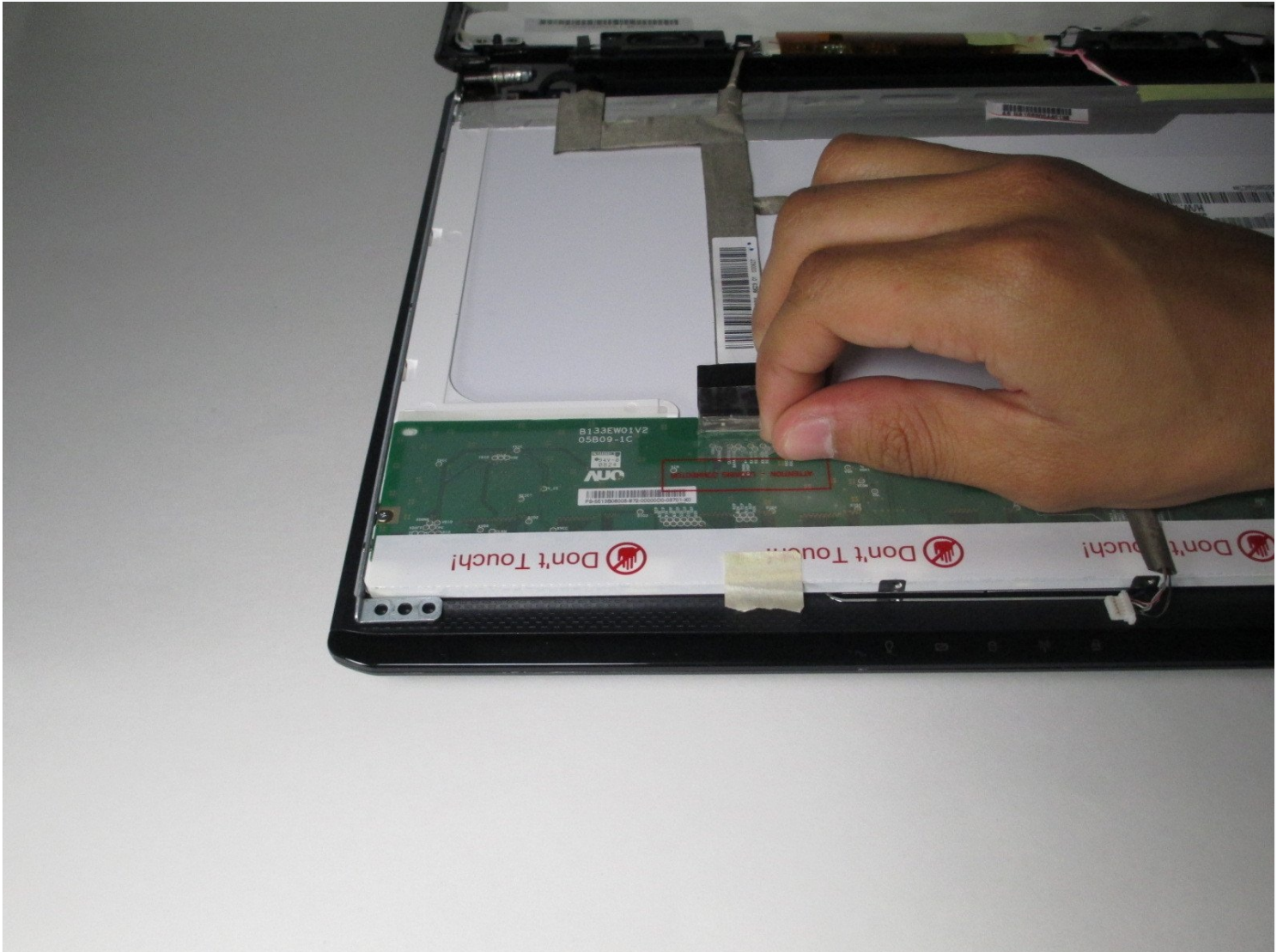




Asus F6A-X2 Screen Replacement

The screen is important for viewing content on...

Written By: Jonathan



INTRODUCTION

The screen is important for viewing content on your laptop. A malfunctioning screen can affect your workflow negatively. Be sure to use a screen that fits the dimensions of the laptop (13.3" WXGA).


TOOLS:


Tweezers (1)

Phillips #1 Screwdriver (1)

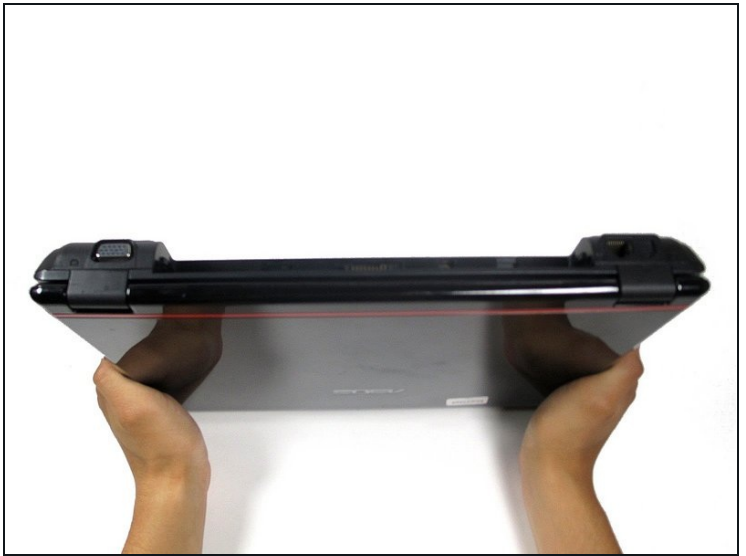
Step 1 — Battery



 Remove any power cords and turn the laptop off. Attempting to replace part of the laptop while power is running through it may cause electrocution or damage to the device.

- Flip laptop face down and rotate so the battery is facing toward you.
-  The battery is not shown in this picture.
- To remove the battery, place one finger on each of the two black slide tabs. Push each tab toward the center of the laptop to release the lock.
- Slide the battery toward you and lift it out of the laptop.

Step 2 — Front Bezel



- Lay the laptop right side up.
- Rotate laptop 90 degrees towards you, so the empty battery compartment is visible.

Step 3



- Insert a finger nail, or the flat end of the spudger, into the slot between the laptop base and the hinge guard on the right side. Gently pull the guard towards you until the guard pops off.
- Repeat this process for the other guard.

Step 4



- Once the hinge guards are removed, lay the laptop flat on its bottom. Then, lift open the laptop screen as if you were about to use it.
- With a pair of [tweezers](#), peel off the six rubber cushions from the bezel located around the perimeter of the screen.

Step 5



- Remove the six 2.0 mm Phillips #1 screws from the perimeter of the bezel.

Step 6



- Insert a finger nail, or the flat end of a spudger, into the slit between the bezel and the back cover of the laptop.
- Gently pry the bezel towards you to remove it from the back panel of the laptop.
- ① Hearing a cracking noise is normal. The bezel is not damaged in this process.
- Continue to pry around the perimeter of the laptop until the entire bezel has been removed.

Step 7 — Partial Screen



- ① The screen is attached to the webcam at the top and the inverter at the bottom. Disconnecting the screen from these two components will give some slack when removing the screen.
- With a pair of [tweezers](#), grab on to the white connector at the bottom of the screen. Gently, but firmly, pull the connector to the right to remove it.
- Repeat this process with the white connector attached to the webcam above the screen.

Step 8



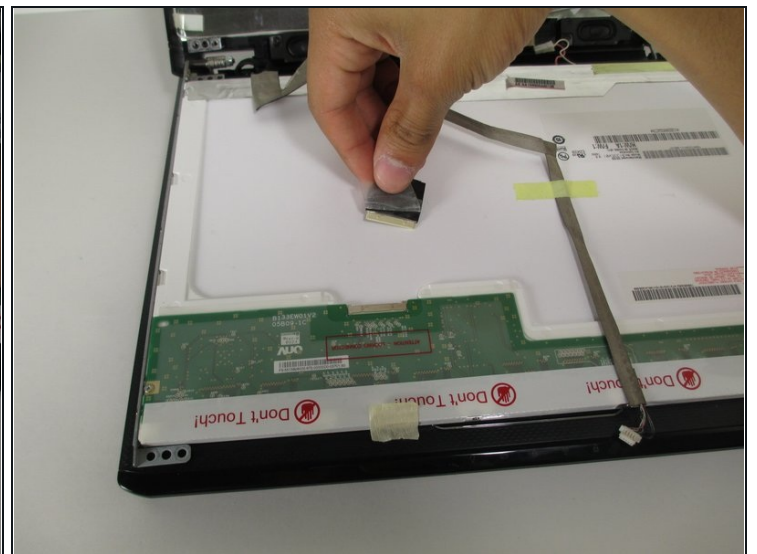
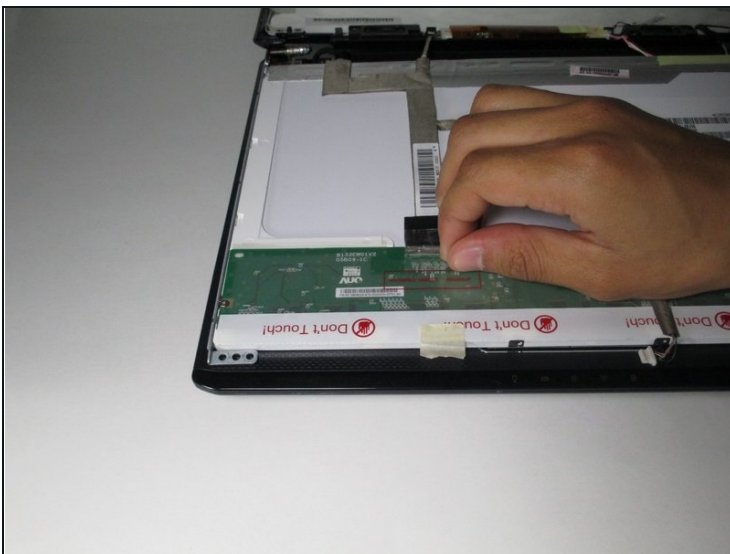
- Remove the four 2.0 mm Phillips #1 screws at each corner of the laptop screen.
- ★ When reassembling the screen, make sure the 2.0 mm screws go into the holes closest to the center of the laptop.

Step 9



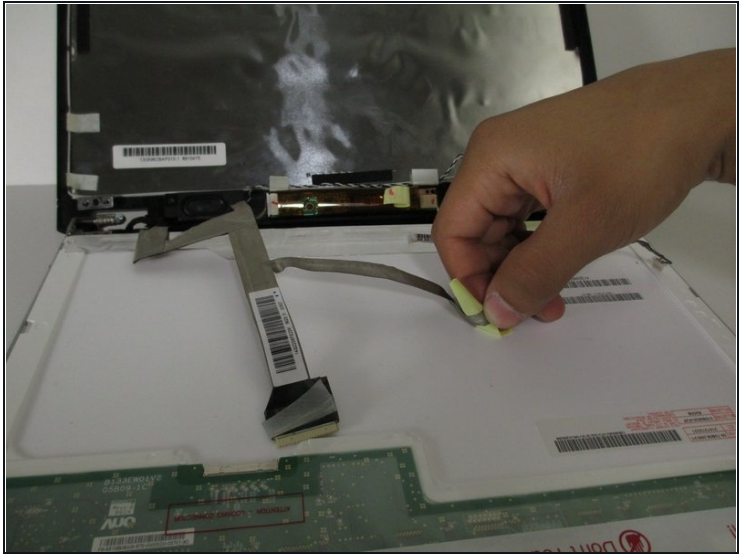
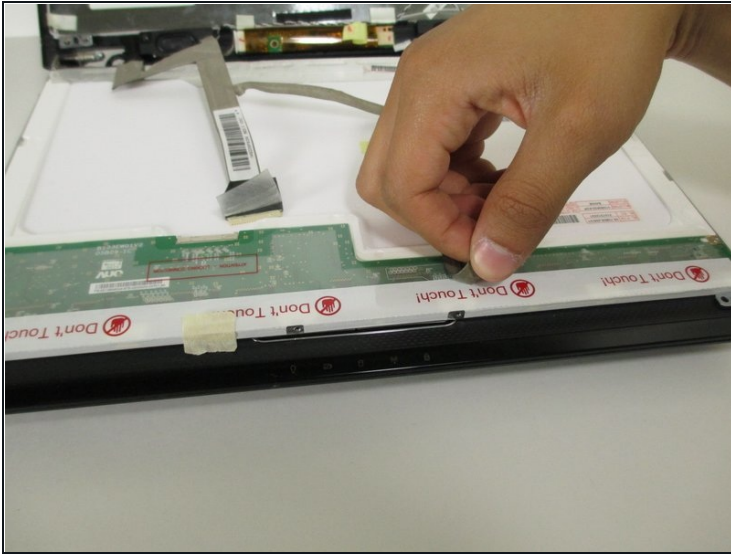
- Close the laptop.
- Open the laptop again. With the screws removed, the screen should remain flat against the keyboard.

Step 10 — Screen



- Partially remove the adhesive securing the black tab to the screen so that the adhesive is only attached to the black tab.
- Pull the black tab gently, towards the back of the laptop to remove it from the screen.

Step 11



- Remove the remaining adhesive by gently lifting up on the yellow pieces of tape.
- Rest these wires on the back panel to prevent them from getting damaged.

Step 12



- Remove the six 2.0 mm Phillips #1 screws securing the hinges to the screen. There are three screws on each side of the laptop.

Step 13



- Simply lift the screen from back of the laptop to remove it

To reassemble your device, follow these instructions in reverse order.