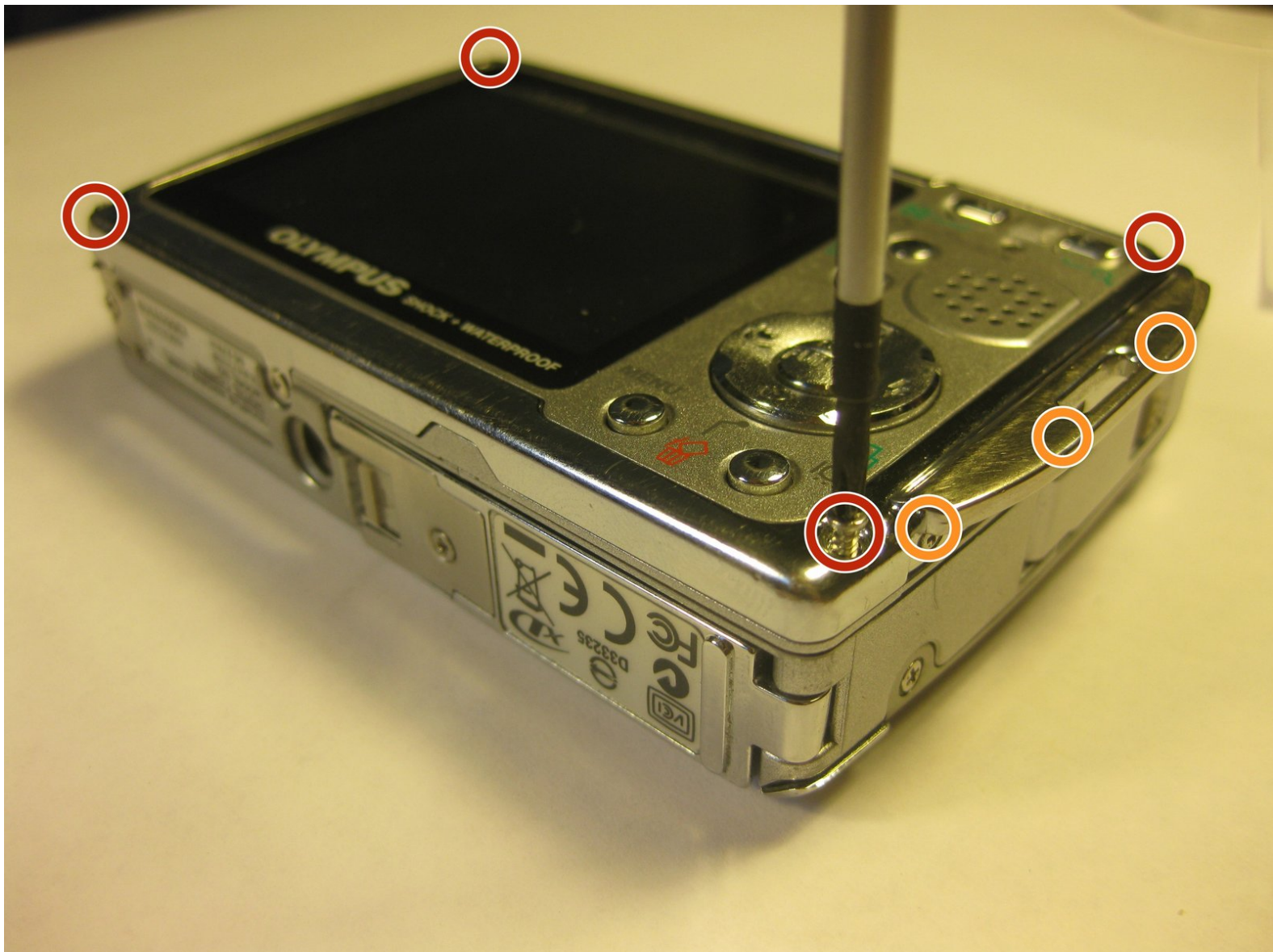




Disassembling Olympus Stylus 725 SW Back Panel

Use this guide to remove the back panel to...

Written By: Bobby Hodges



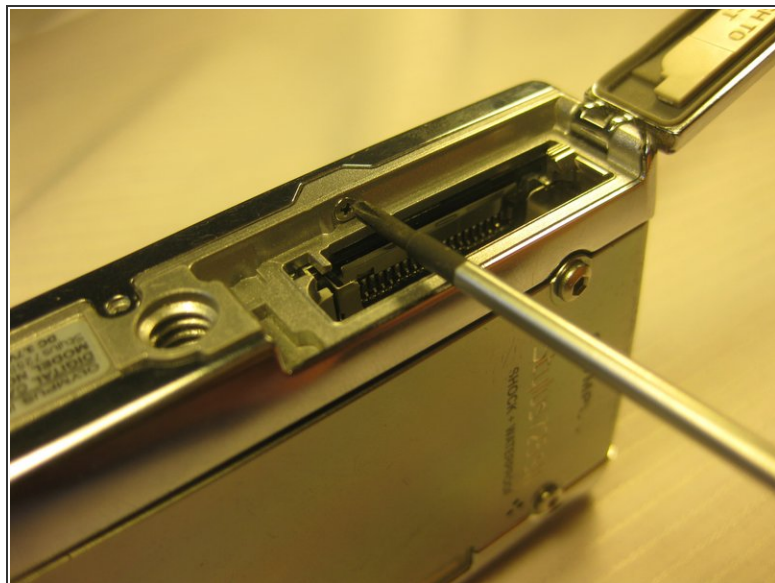
INTRODUCTION

Use this guide to remove the back panel to access the components inside.

TOOLS:

- [Phillips #00 Screwdriver](#) (1)
-

Step 1 — Disassembling Olympus Stylus 725 SW Battery



i The battery is located on the bottom of the camera.

- Remove the battery by placing your thumb on the bottom flap and sliding the release button away from the side the lens is on. (The screwdriver is simply used as a reference point, no screws need to be removed)
- If the battery is dead, charge it for 60-90 minutes.

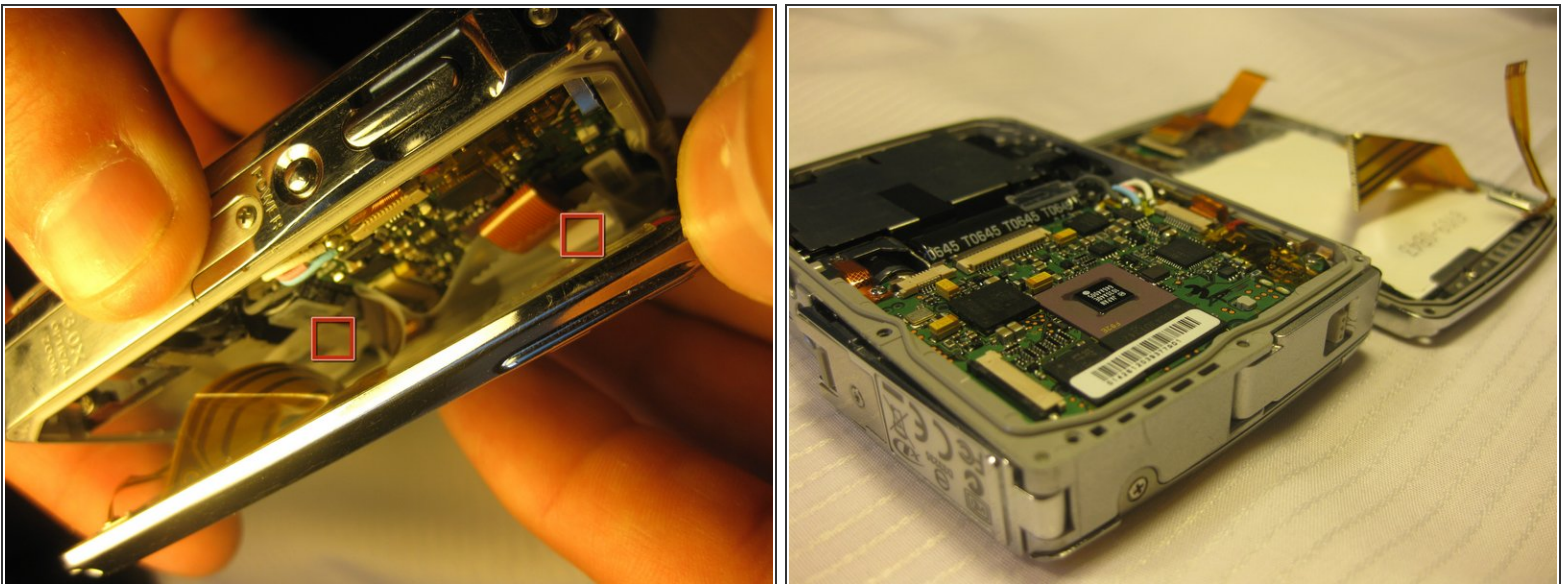
! When installing a charged battery, align the battery appropriately. The positive signs and negative should line up.

Step 2 — Disassembling Olympus Stylus 725 SW Back Panel



- Remove the four 3 mm long cover screws at the corners of the camera using a Phillips #00 screwdriver.
- Remove the 2 mm long screws securing the sides of the camera which holds the back panel using a Phillips #00 screwdriver.

Step 3



⚠ Be careful when removing the back cover; you will need to detach the connecting ribbons. Use tweezers if necessary.

- Detach the ribbons using your thumb, sliding them out of their slots.
- Set the back panel face up to keep the ribbons from touching anything.

To reassemble your device, follow these instructions in reverse order.