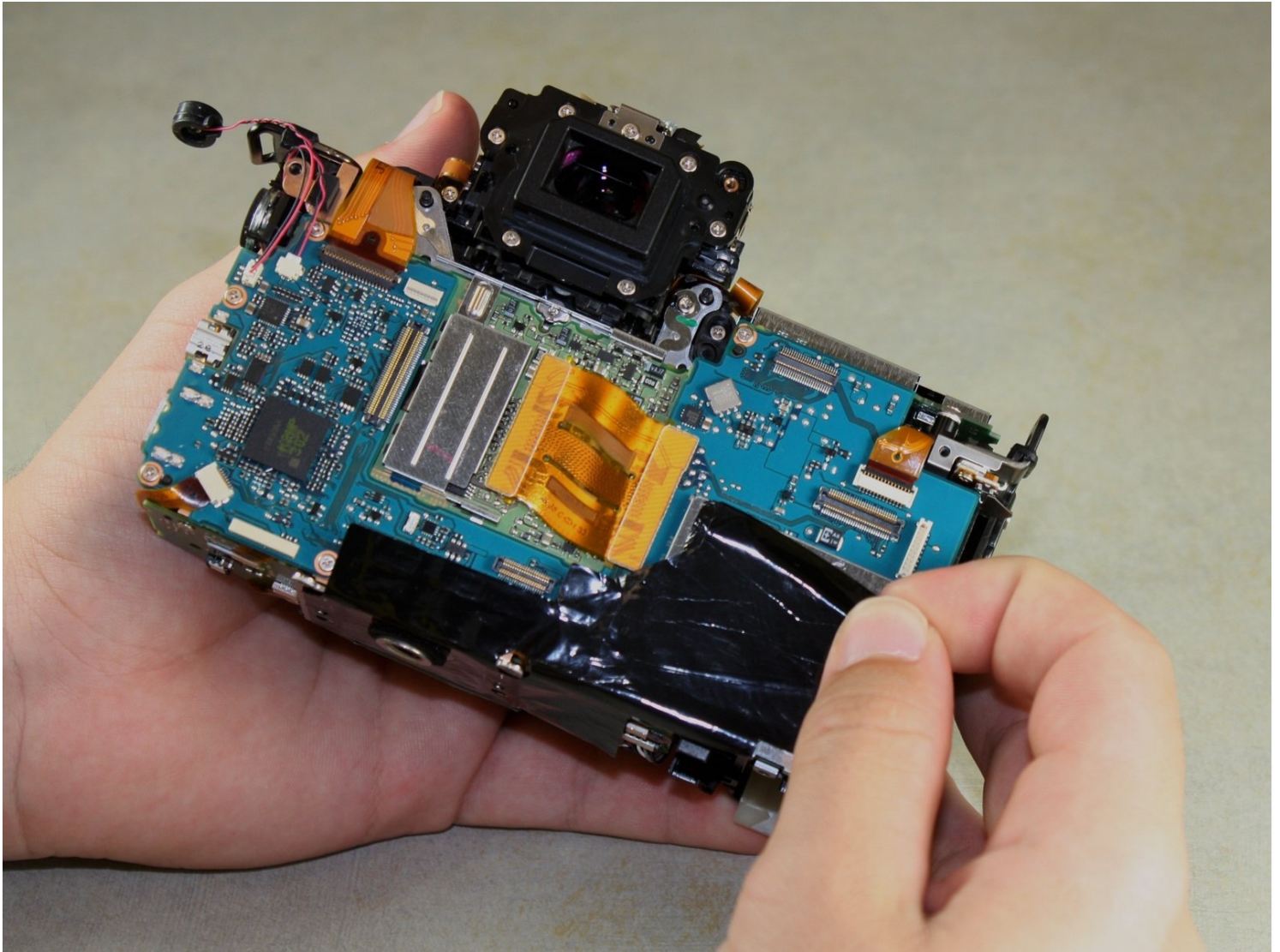




Canon EOS 6D Image Sensor Replacement

Use this guide to replace a malfunctioning...

Written By: Justin Thomas



INTRODUCTION

Use this guide to replace a malfunctioning image sensor in your EOS 6D.

TOOLS:

[Phillips #00 Screwdriver](#) (1)

[Spudger](#) (1)

[Tweezers](#) (1)

[T6 Torx Screwdriver](#) (1)

Step 1 — Rear Body Panel



- Remove the viewfinder cover by pinching the sides and sliding it upward.

Step 2



- Open the battery door on the bottom of the camera.
- Use your thumb to slide the small black tab on the inside of the battery door up and pull the door off the camera.

Step 3



- Slide your fingernail or the flat end of the spudger underneath the rubber covering and gently peel it off all sides of the camera.

Step 4



- Open the covers to the HDMI/AV/MIC ports on the side of the camera by gently pulling outward on the bottom of the covers.
- Rotate the covers to the side so that you can see the connection ports inside.
- Remove the following screws:
 - Two silver 5mm Phillips #00
 - One black 6mm Phillips #00

Step 5



- Remove the cover to the HDMI/AV/MIC ports by gently lifting the tab on the bottom edge of the camera.

Step 6



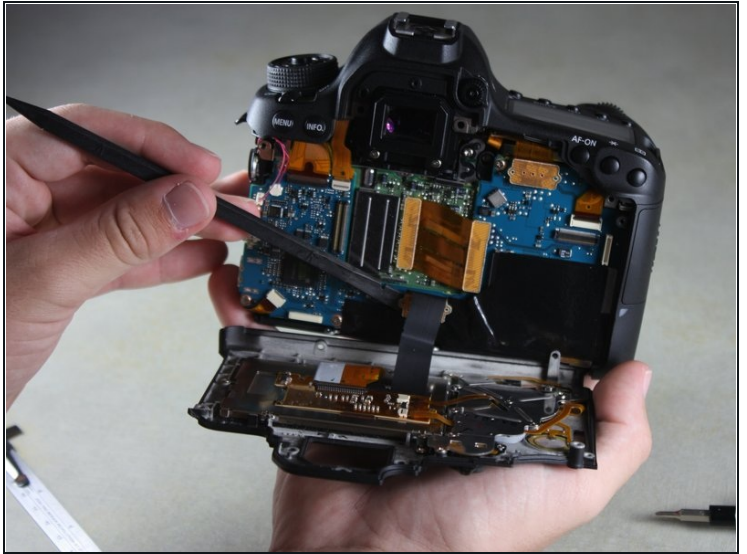
- Rotate your camera so the bottom side is facing you.
- Remove the following screws:
 - One 6mm Phillips #00
 - Two 3mm Phillips #00

Step 7



- Rotate your camera so the back is facing you.
- Remove the following screws:
 - Three silver 5mm Phillips #00
 - Two black 6mm Phillips #00
 - One black 4mm Phillips #00

Step 8



⚠ A black ribbon wire connects the rear panel to the inside of the camera. Breaking this wire would make your rear screen and buttons non-functional.

- Carefully use your fingers to tilt the back panel downward to about a 90 degree angle.
- Use the flat end of the spudger to gently pry off the ribbon wire from the inside of the camera.

Step 9 — Front and Top Body Panels



- Remove the 8mm Phillips #00 screw from the bottom of the front of the camera.

Step 10



- Rotate the camera so the side with the SD card slot is facing you.
- Remove the 4mm Phillips #00 screw from the bottom edge of this side.

Step 11



- Rotate the camera so the bottom is facing you.
- Remove the following screws:
 - Two 8mm Phillips #00
 - One 4mm Phillips #00

Step 12



- Remove the bottom panel from the camera by using your fingers to pull outward on the tab inside the battery compartment.

Step 13



- Rotate the camera so the front is facing you.
- Remove the following screws:
 - Three 5mm Phillips #00
 - Two 6mm Phillips #00
 - One 4mm Phillips #00

Step 14



- Rotate the camera so the side with the SD card slot is facing you.
- Remove the following screws:
 - One 4mm fine-thread Phillips #00
 - Two 4mm coarse-thread Phillips #00

Step 15



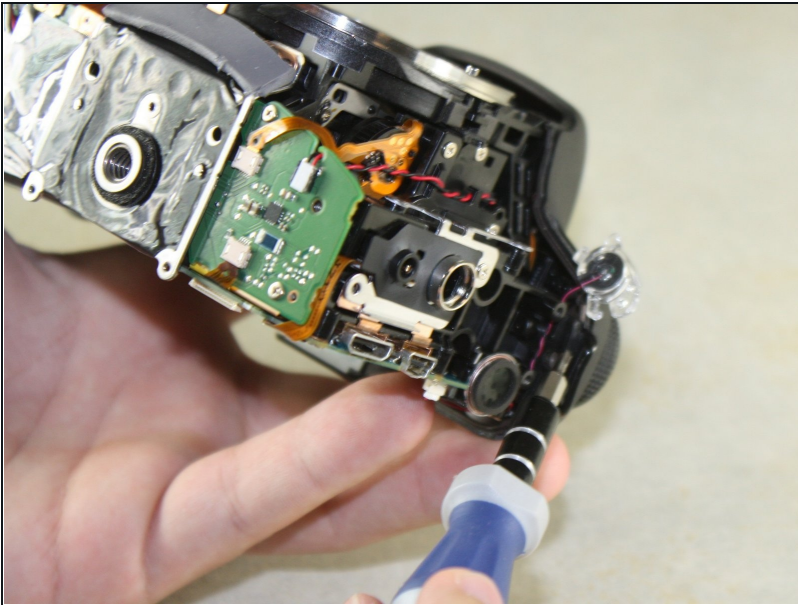
- ⚠ The red speaker wire is attached to the inside of the front panel. Opening the front panel forcefully may break it.
- Slowly fold the front panel to the right without pulling it away from the right edge of the camera.

Step 16



- Remove the 4mm Phillips #00 screw on the inside of the front panel to separate the panel from the speaker wire.

Step 17



- Remove the 4mm Phillips #00 screw from the inside of the top panel, below the strap hook.

Step 18



- Remove the 4mm Phillips #00 screw from the inside of the top panel, below the shutter button.

Step 19



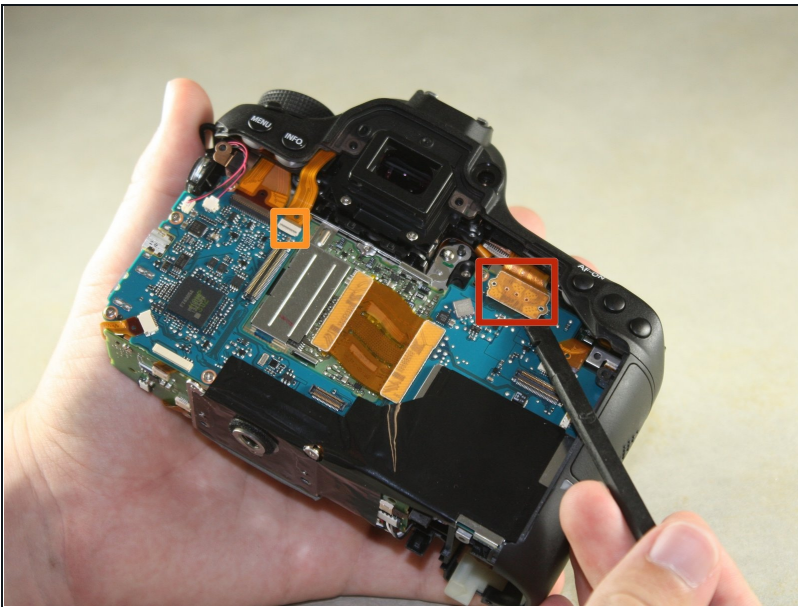
- Rotate the camera so the top is facing you.
- Remove the 6mm Phillips #00 screw from next to the analog screen.

Step 20



- Rotate the camera so the back is facing you.
- Remove the Phillips #00 screw from the viewfinder focus.

Step 21



- Carefully detach the two light brown ribbon wires on the top panel:
 - The right ribbon by prying it out with the flat end of the spudger.
 - The left ribbon by using [tweezers](#) to gently wiggle it out toward the top.

Step 22



⚠ A ribbon wire connects the inside of the top panel to the body of the camera.

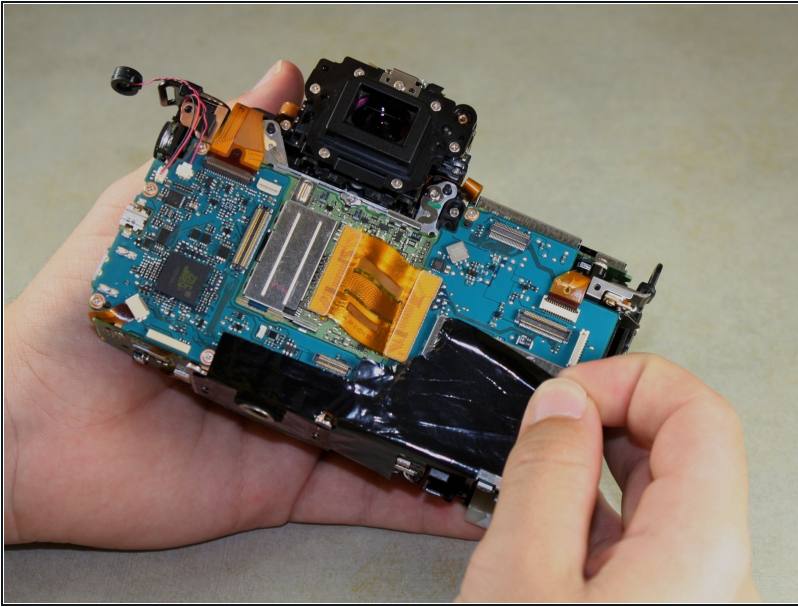
- Slowly lift the top panel to about an inch above the body of the camera.
- Carefully use the flat end of the spudger to detach the ribbon wire from the top of the camera.

Step 23



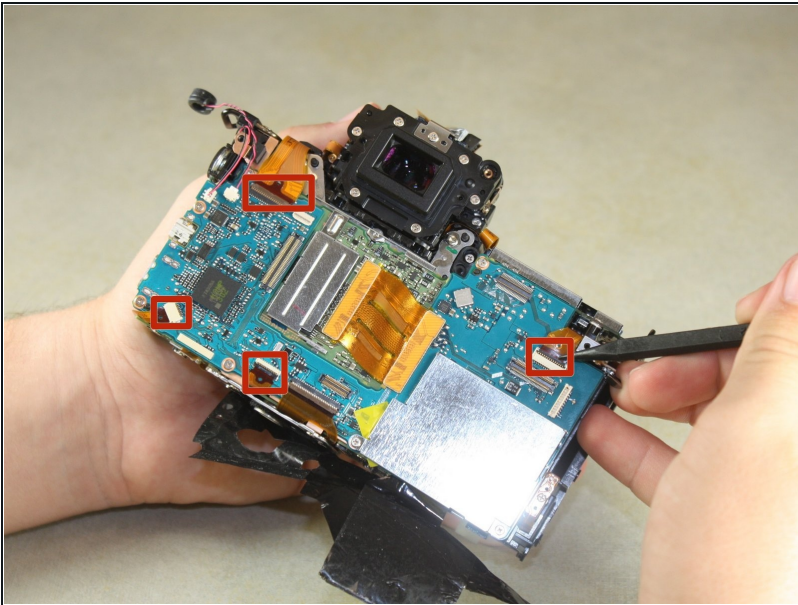
- Grip the remaining side panel with your fingers and gently pop it off the camera.

Step 24 — Image Sensor



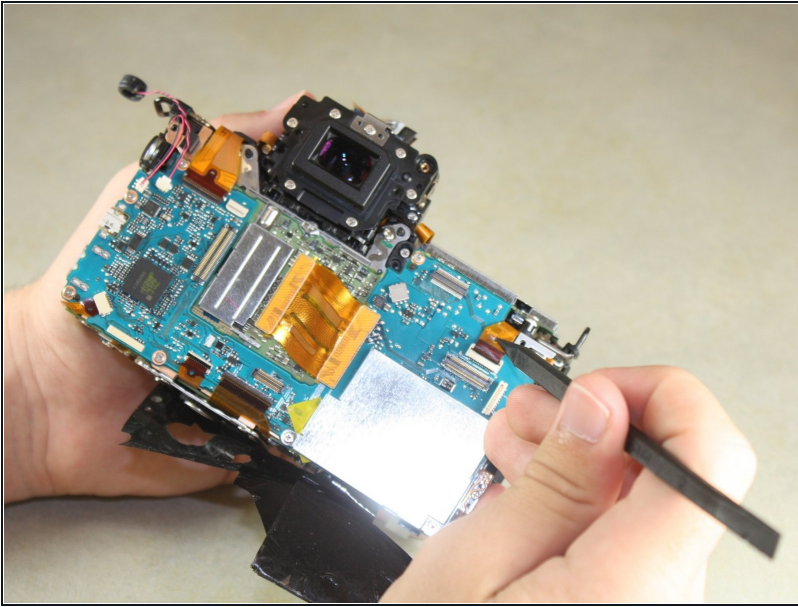
- Carefully peel the black tape off from across the back of the camera.

Step 25



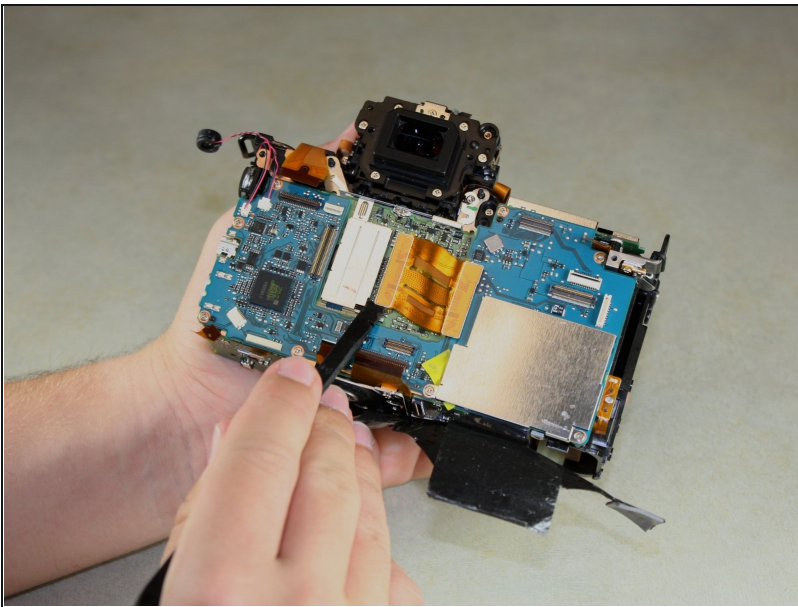
- Use the pointed end of the spudger to lift up on the silver latches on four ribbon wires.

Step 26



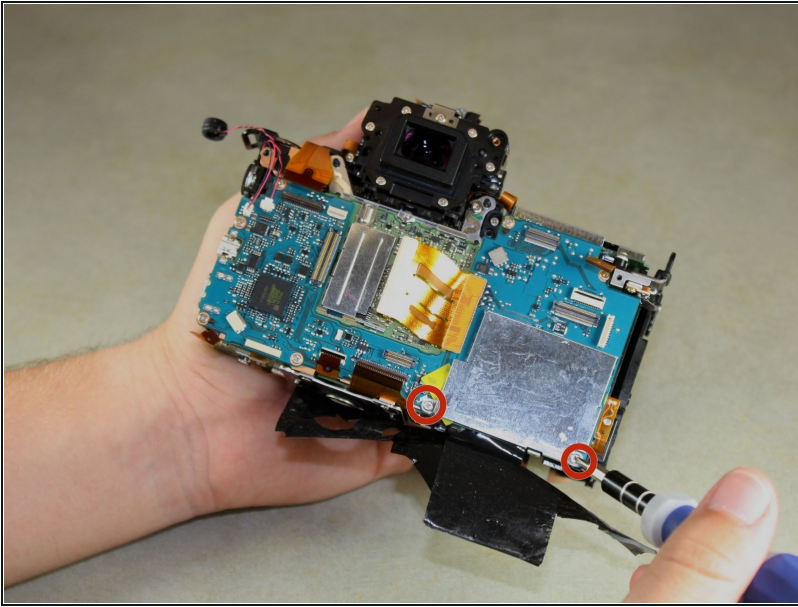
- Use the pointed end of the spudger to carefully slide out the four light brown ribbon wires.

Step 27



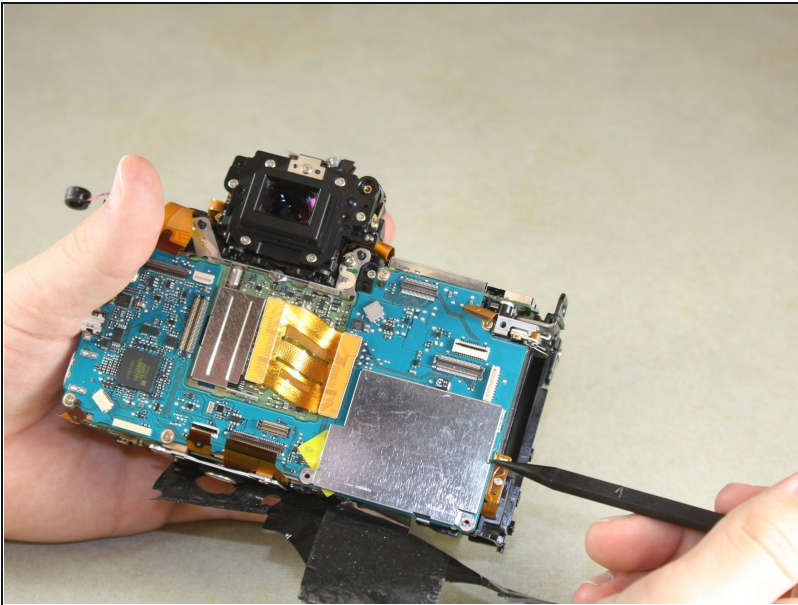
- Use the flat end of the spudger to lift up on the large, light brown ribbon wire in the middle of the camera.

Step 28



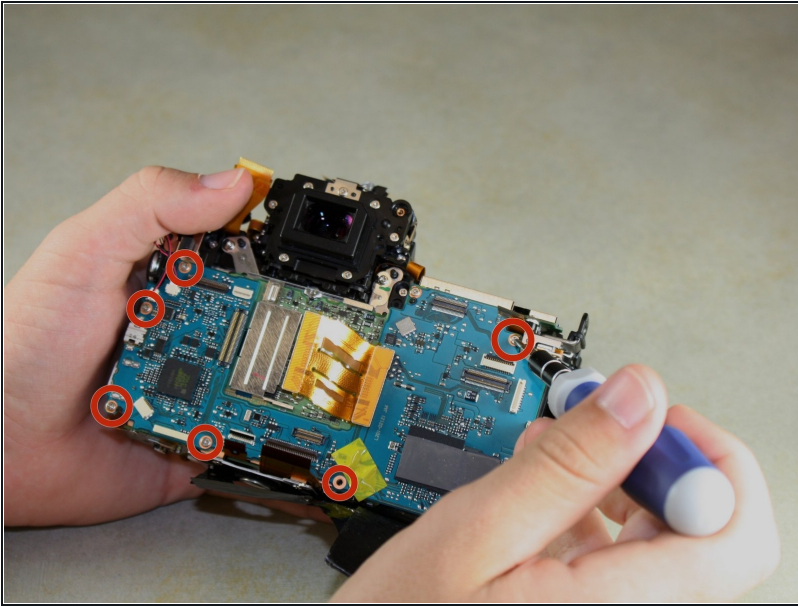
- Remove two 4mm screws from the metal plate on the back of the camera.

Step 29



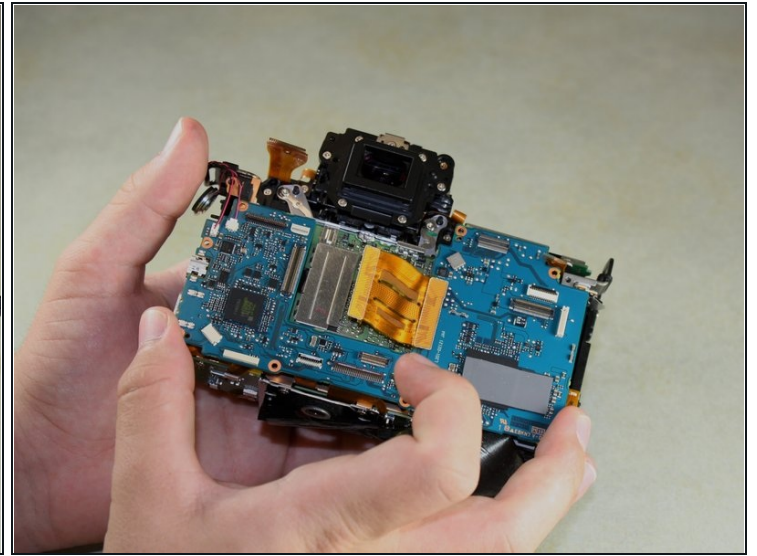
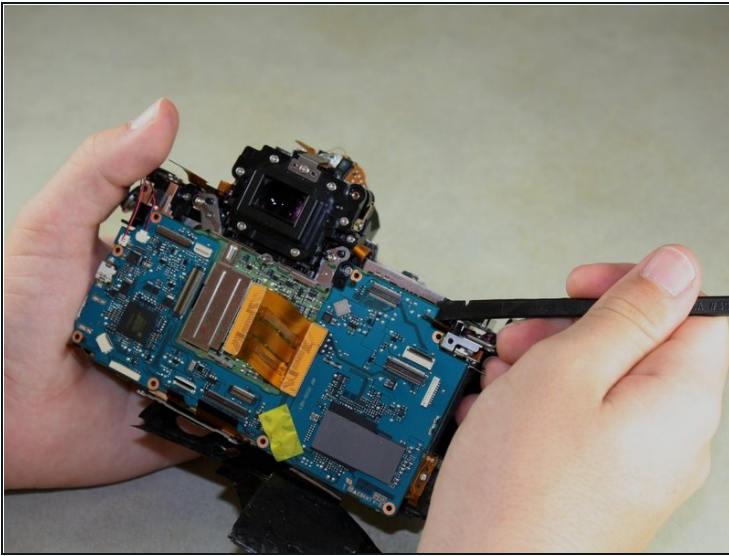
- Use the pointed end of the spudger to carefully remove the metal plate.

Step 30



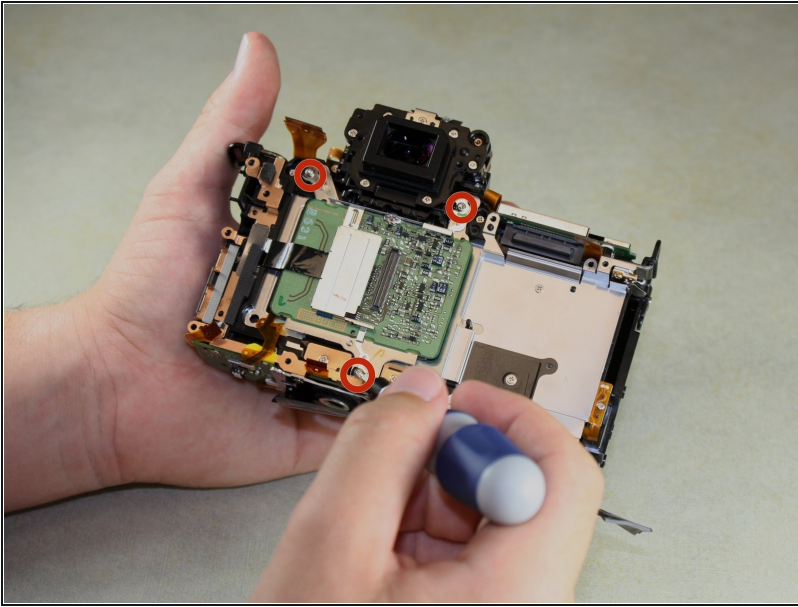
- Remove six 4mm Phillips #00 screws from the back of the camera.

Step 31



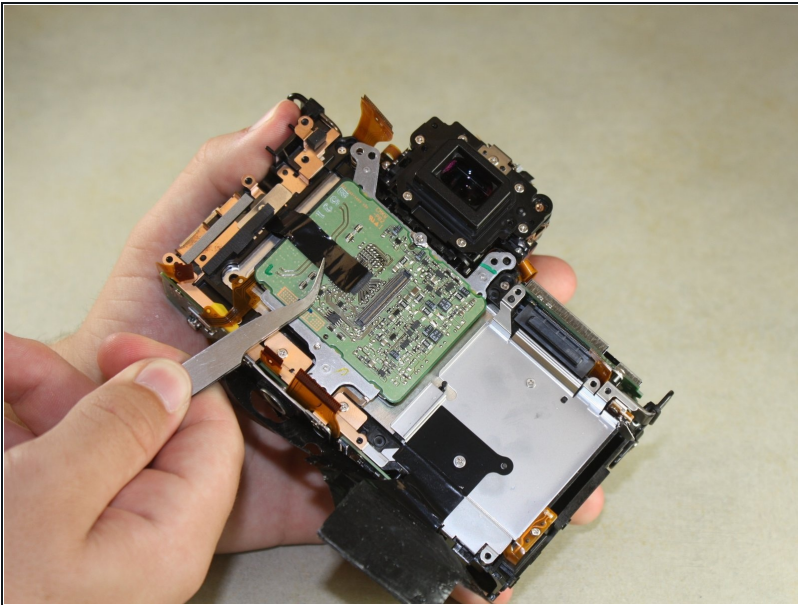
- Slide the flat end of the spudger under the top of the large blue panel and carefully pry it off.

Step 32



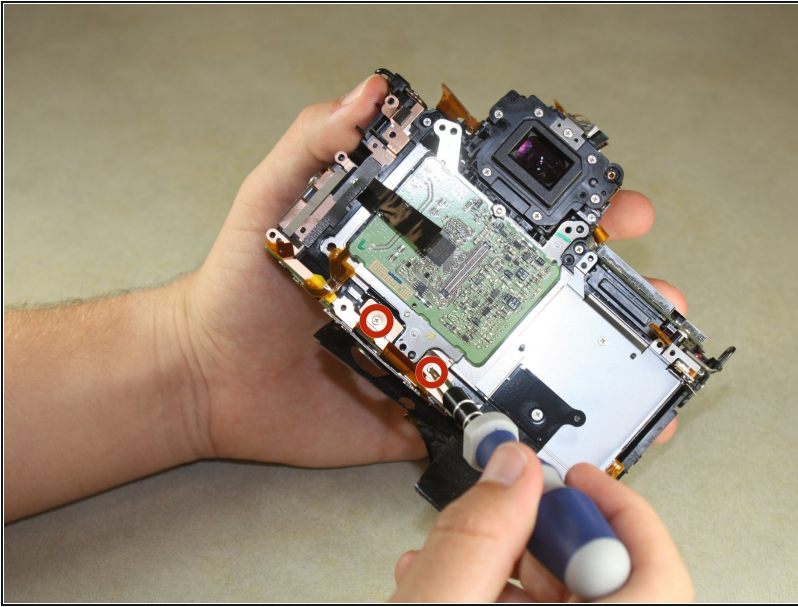
- Remove three 6mm Torx T6 screws from the back of the camera.

Step 33



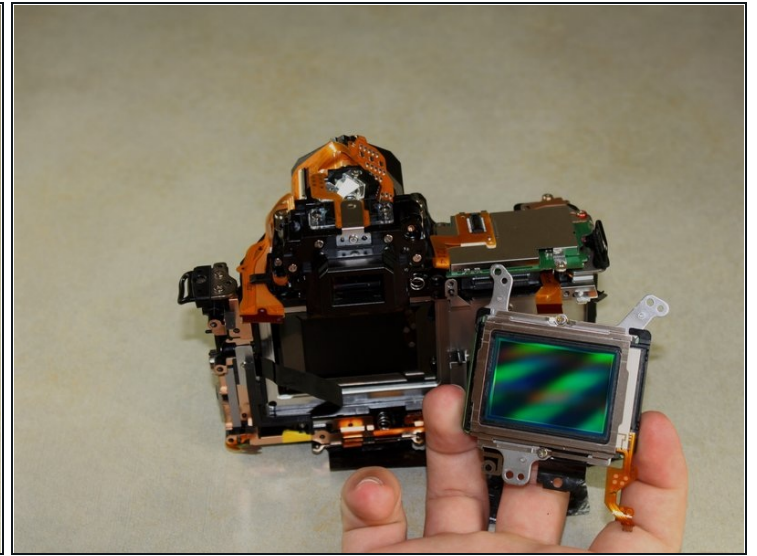
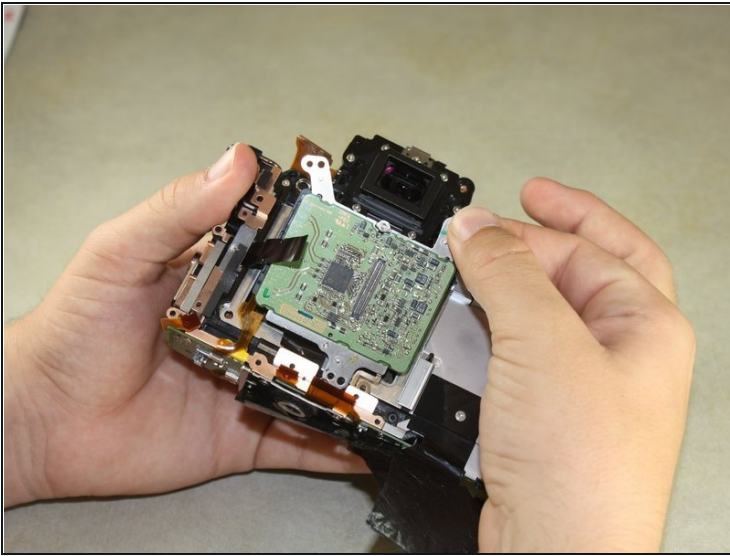
- Use [tweezers](#) to remove the small metal plate and the thin strip of black tape underneath it.

Step 34



- Remove two Phillips #00 screws from the back of the camera.

Step 35



- Use your fingers to grip the top of the image sensor and pull it slightly outward.
- Lift the sensor out toward the top of the camera.

To reassemble your device, follow these instructions in reverse order.