



Canon EOS 6D MIC Port and Remote Socket Replacement

Replace the MIC Port and Remote Socket on your EOS 6D.

Written By: Justin Thomas



INTRODUCTION

Use this guide to replace a nonfunctional MIC Port or Remote Socket on your EOS 6D.



TOOLS:

- [Phillips #00 Screwdriver](#) (1)
 - [Spudger](#) (1)
 - [Tweezers](#) (1)
-

Step 1 — Rear Body Panel



- Remove the viewfinder cover by pinching the sides and sliding it upward.

Step 2



- Open the battery door on the bottom of the camera.
- Use your thumb to slide the small black tab on the inside of the battery door up and pull the door off the camera.

Step 3



- Slide your fingernail or the flat end of the spudger underneath the rubber covering and gently peel it off all sides of the camera.

Step 4



- Open the covers to the HDMI/AV/MIC ports on the side of the camera by gently pulling outward on the bottom of the covers.
- Rotate the covers to the side so that you can see the connection ports inside.
- Remove the following screws:
 - Two silver 5mm Phillips #00
 - One black 6mm Phillips #00

Step 5



- Remove the cover to the HDMI/AV/MIC ports by gently lifting the tab on the bottom edge of the camera.

Step 6



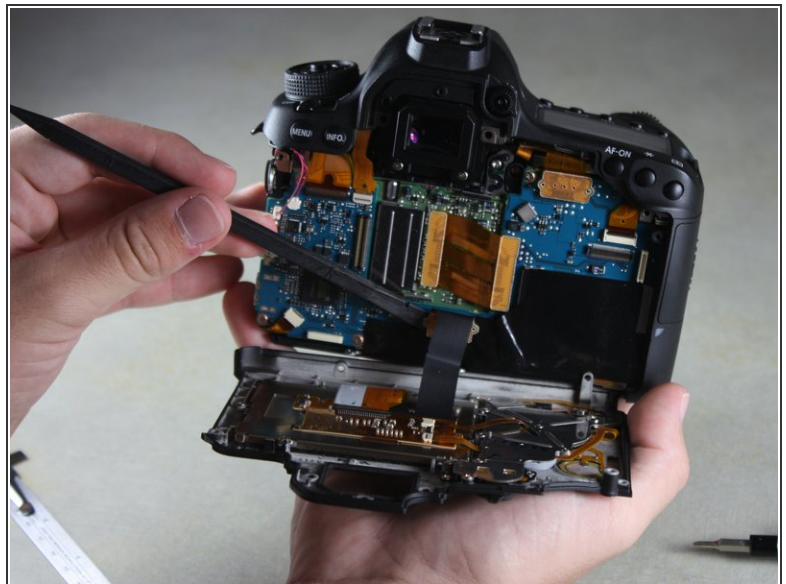
- Rotate your camera so the bottom side is facing you.
- Remove the following screws:
 - One 6mm Phillips #00
 - Two 3mm Phillips #00


Step 7



- Rotate your camera so the back is facing you.
- Remove the following screws:
 - Three silver 5mm Phillips #00
 - Two black 6mm Phillips #00
 - One black 4mm Phillips #00

Step 8



 A black ribbon wire connects the rear panel to the inside of the camera. Breaking this wire would make your rear screen and buttons non-functional.

- Carefully use your fingers to tilt the back panel downward to about a 90 degree angle.
- Use the flat end of the spudger to gently pry off the ribbon wire from the inside of the camera.

This document was generated on 2020-11-28 03:20:41 AM (MST).

Step 9 — Front and Top Body Panels



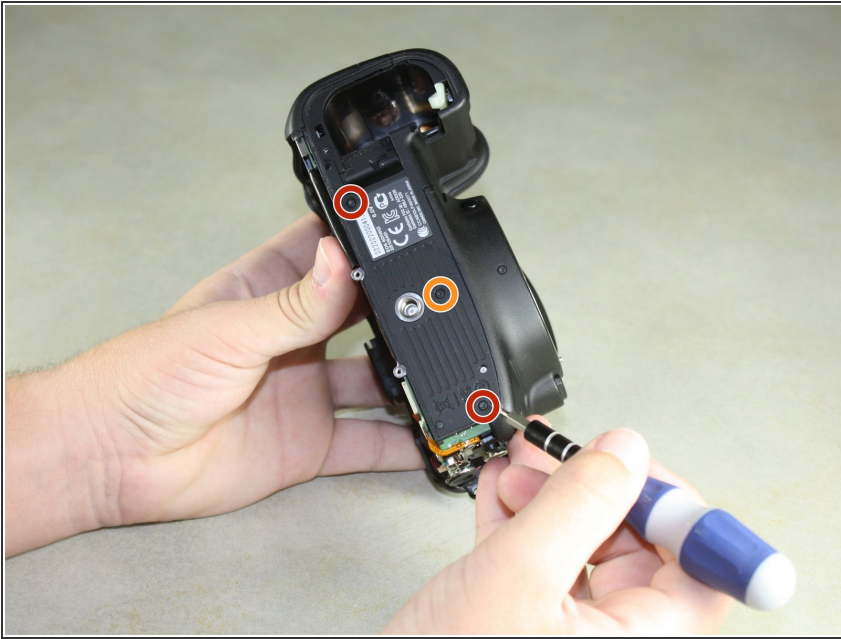
- Remove the 8mm Phillips #00 screw from the bottom of the front of the camera.

Step 10



- Rotate the camera so the side with the SD card slot is facing you.
- Remove the 4mm Phillips #00 screw from the bottom edge of this side.

Step 11



- Rotate the camera so the bottom is facing you.
- Remove the following screws:
 - Two 8mm Phillips #00
 - One 4mm Phillips #00

Step 12



- Remove the bottom panel from the camera by using your fingers to pull outward on the tab inside the battery compartment.

Step 13



- Rotate the camera so the front is facing you.
- Remove the following screws:
 - Three 5mm Phillips #00
 - Two 6mm Phillips #00
 - One 4mm Phillips #00

Step 14



- Rotate the camera so the side with the SD card slot is facing you.
- Remove the following screws:
 - One 4mm fine-thread Phillips #00
 - Two 4mm coarse-thread Phillips #00

Step 15



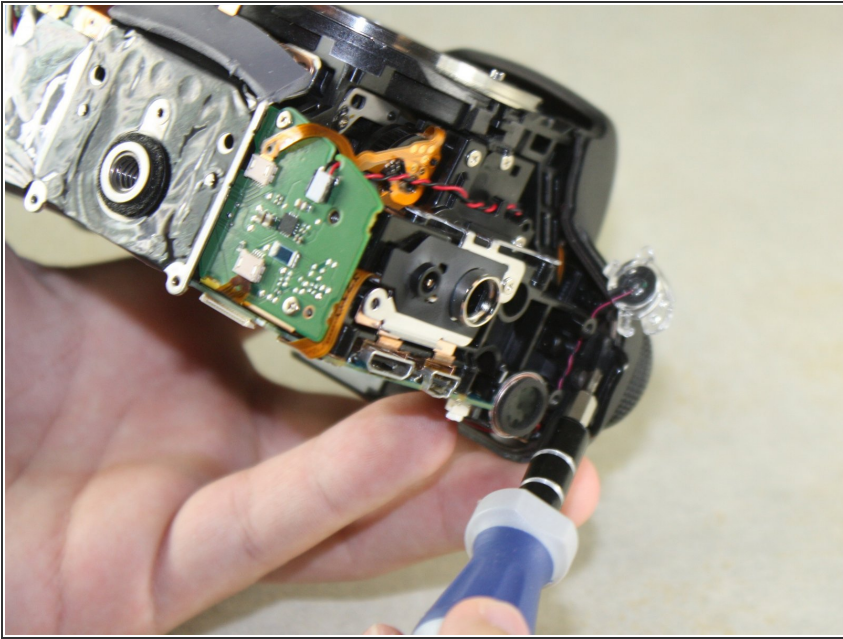
- ⚠ The red speaker wire is attached to the inside of the front panel. Opening the front panel forcefully may break it.
- Slowly fold the front panel to the right without pulling it away from the right edge of the camera.

Step 16



- Remove the 4mm Phillips #00 screw on the inside of the front panel to separate the panel from the speaker wire.

Step 17



- Remove the 4mm Phillips #00 screw from the inside of the top panel, below the strap hook.

Step 18



- Remove the 4mm Phillips #00 screw from the inside of the top panel, below the shutter button.

Step 19



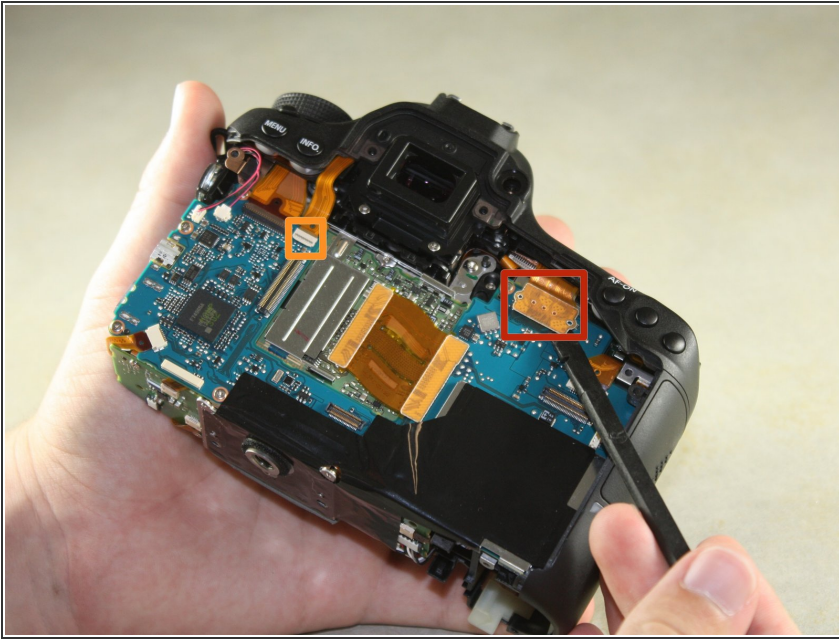
- Rotate the camera so the top is facing you.
- Remove the 6mm Phillips #00 screw from next to the analog screen.

Step 20



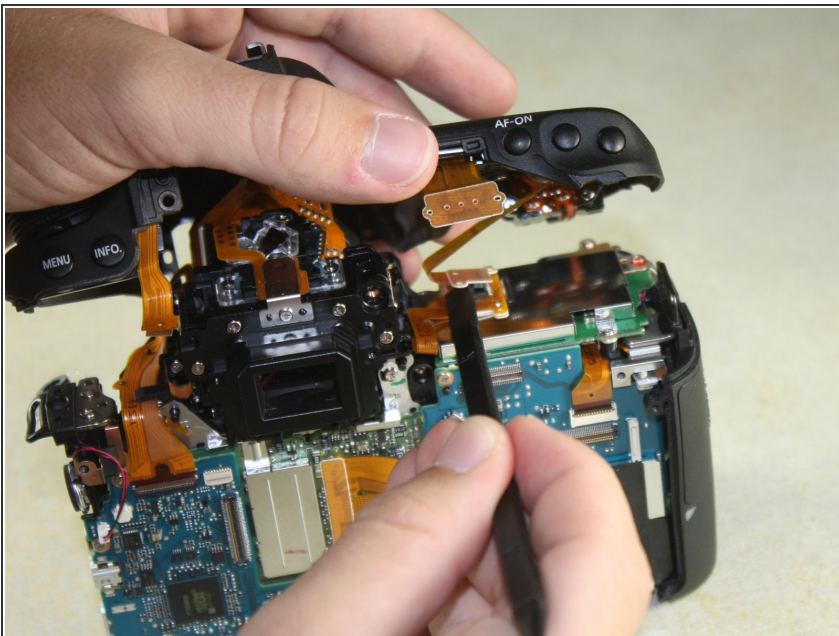
- Rotate the camera so the back is facing you.
- Remove the Phillips #00 screw from the viewfinder focus.

Step 21



- Carefully detach the two light brown ribbon wires on the top panel:
 - The right ribbon by prying it out with the flat end of the spudger.
 - The left ribbon by using tweezers to gently wiggle it out toward the top.

Step 22



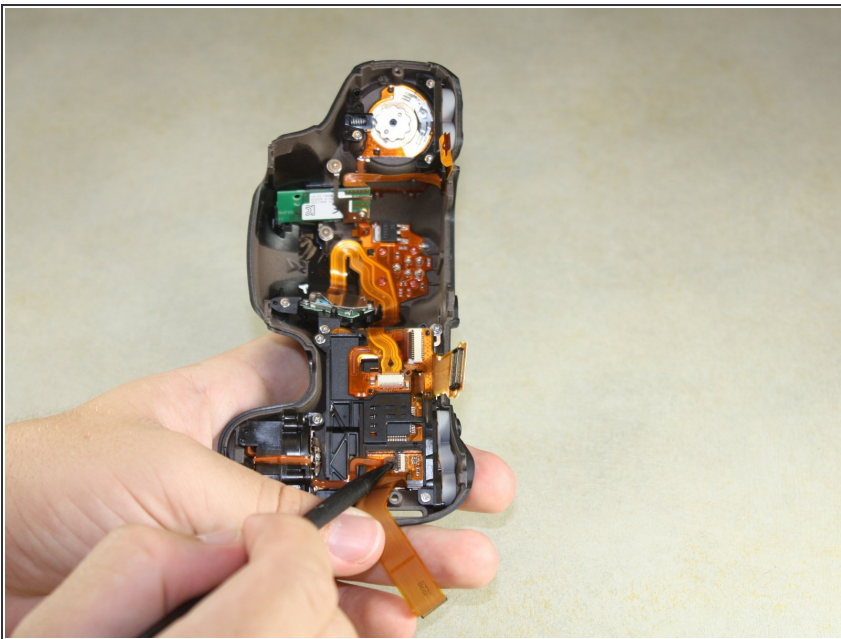
- ⚠ A ribbon wire connects the inside of the top panel to the body of the camera.
- Slowly lift the top panel to about an inch above the body of the camera.
- Carefully use the flat end of the spudger to detach the ribbon wire from the top of the camera.

Step 23



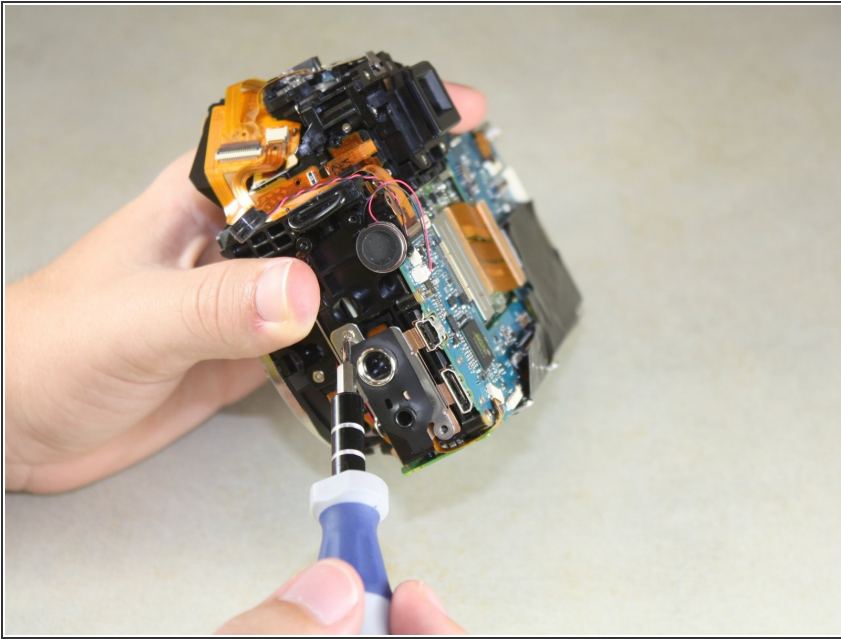
- Grip the remaining side panel with your fingers and gently pop it off the camera.

Step 24 — MIC Port and Remote Socket



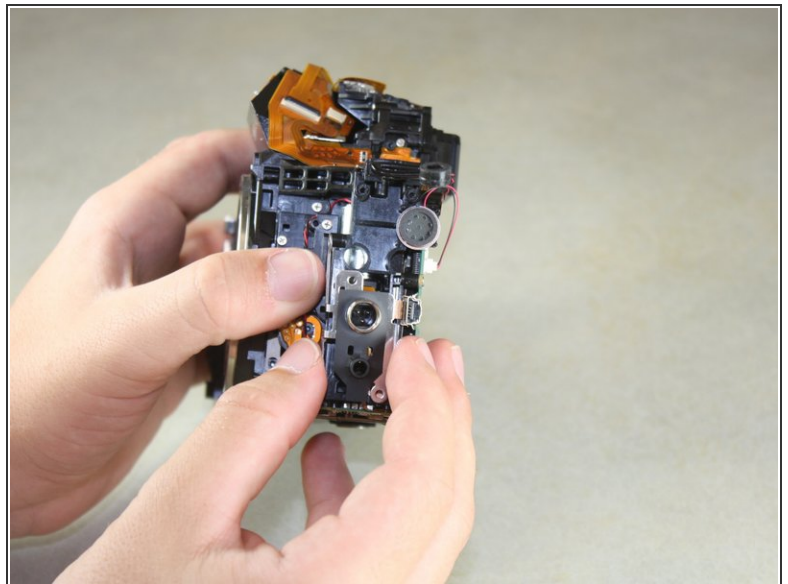
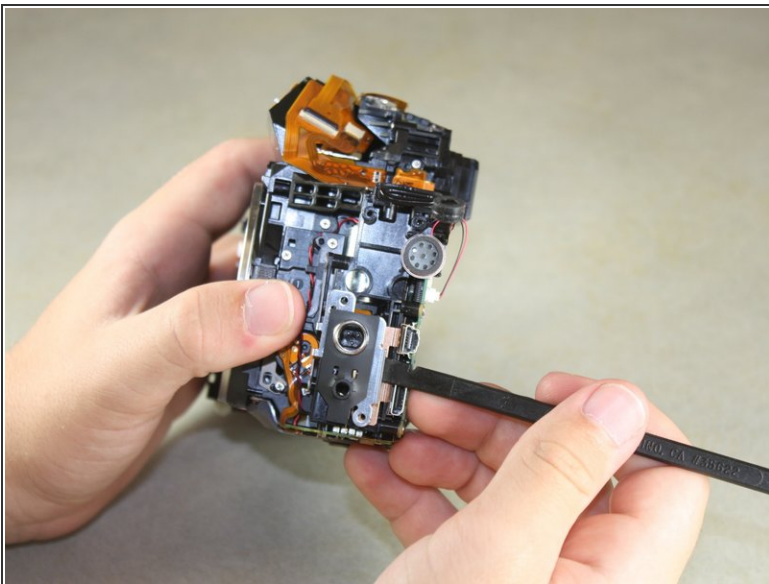
- Rotate the camera so the bottom is facing you.
- Use the spudger to remove the light brown ribbon wire from the bottom edge of the camera.

Step 25



- Rotate the camera so the side with the MIC port is facing you.
- Remove the 4mm Phillips #00 screw from above the MIC port.

Step 26



- Use the flat end of the spudger to gently lift up on the right side of the port.
- Grip the sides of the port with your fingers and gently wiggle it up and down while pulling outward to remove it.

To reassemble your device, follow these instructions in reverse order.