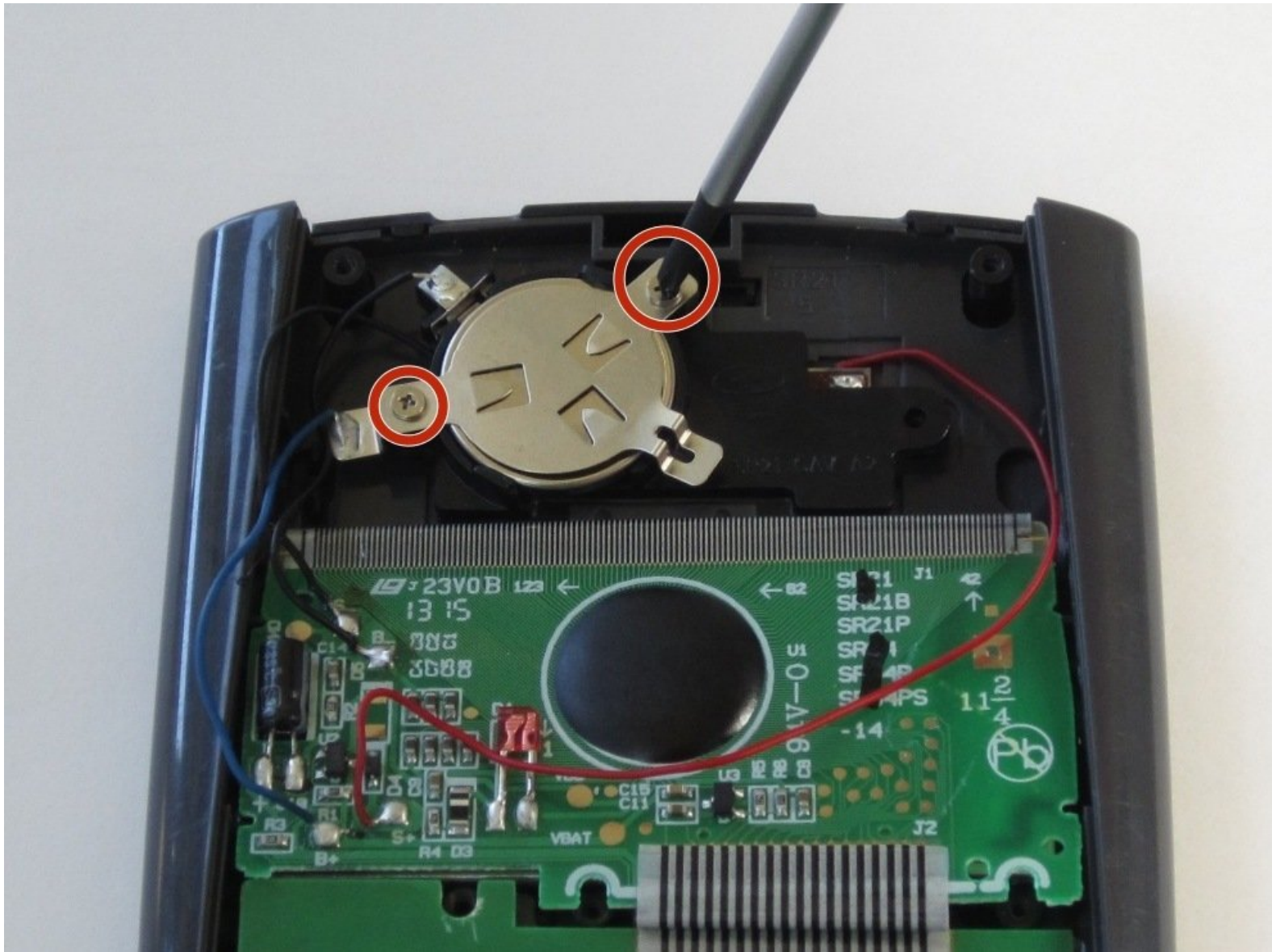




TI-36X Pro Battery Replacement

For this guide you will remove the back cover...

Written By: Robert Sekerak



INTRODUCTION

For this guide you will remove the back cover and battery cover in order to replace the battery.



TOOLS:

- [Phillips #00 Screwdriver](#) (1)
- [Phillips #1 Screwdriver](#) (1)
- [Spudger](#) (1)



PARTS:

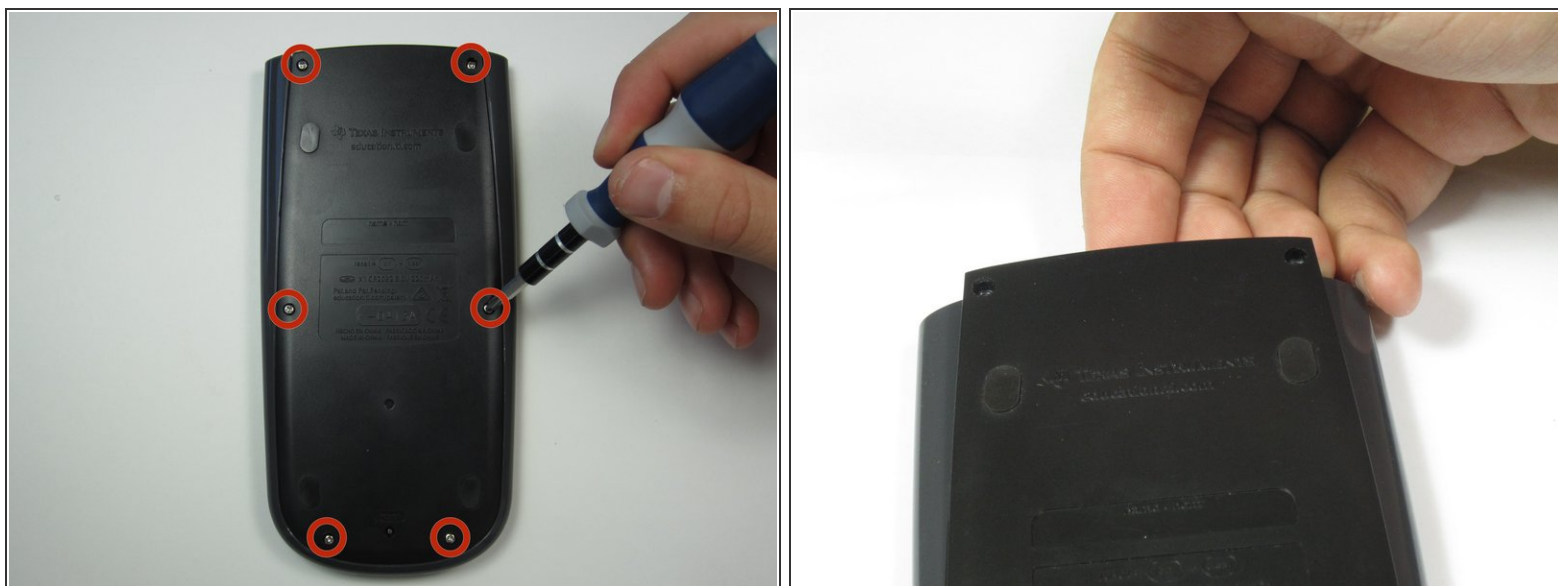
- [3 volt CR2032 Rechargeable Battery](#) (1)

Step 1 — Back Cover



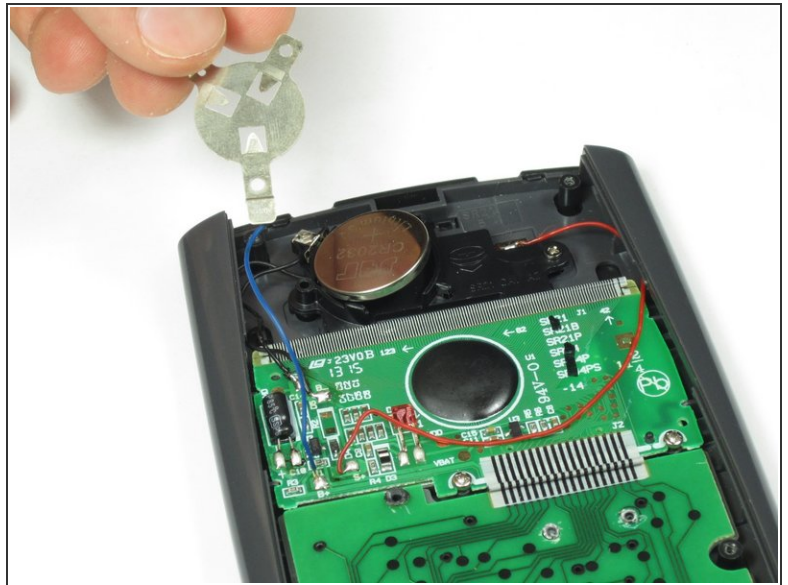
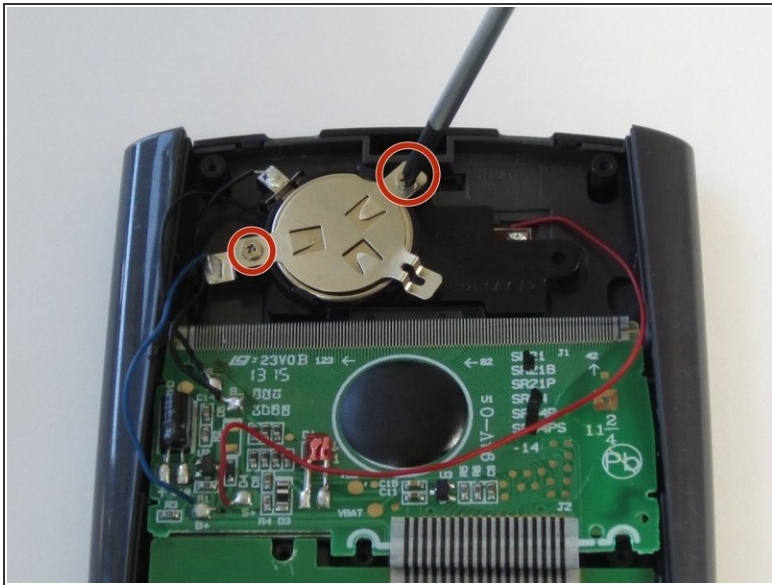
- Remove the calculator's protective cover.
- Place the calculator face down.

Step 2



- Using a Phillips #1 screwdriver, remove the six 6mm screws from the back of the case and place them to the side.
- Start from the notches on the top edge and use your fingers or a prying tool to carefully pry the back cover from the calculator.

Step 3 — Battery

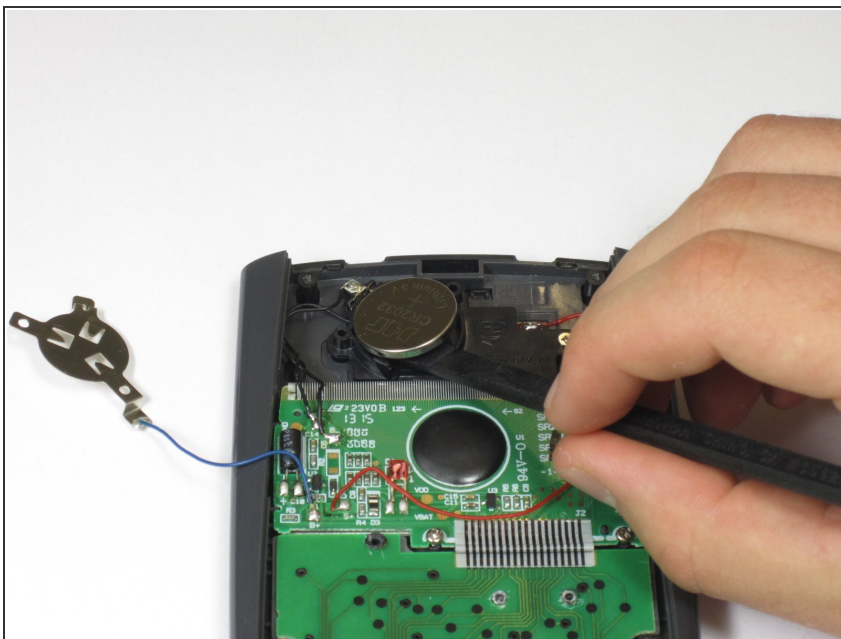


- Use a Phillips #00 screwdriver to remove the two 7.5 mm screws holding the battery cover to the case.

⚠ Remove the battery cover without disconnecting either end of the blue wire.

- Use your finger to move the battery cover to the side.

Step 4



- Use the flat side of a spudger to remove the battery by lifting the bottom edge.
- ☑ When inserting a new battery, check the polarity (+ or -) and insert the new battery with the + side on top.

To reassemble your device, follow these instructions in reverse order.