



Sony NEX-5R Main Navigation Button Replacement

The removal of the main navigation button...

Written By: Emily Trujillo



INTRODUCTION

The removal of the main navigation button involves removing the rear casing and carefully prying off the button as to not damage the sensitive components.

TOOLS:

Phillips #00 Screwdriver (1)

Spudger (1)

Step 1 — Rear Case



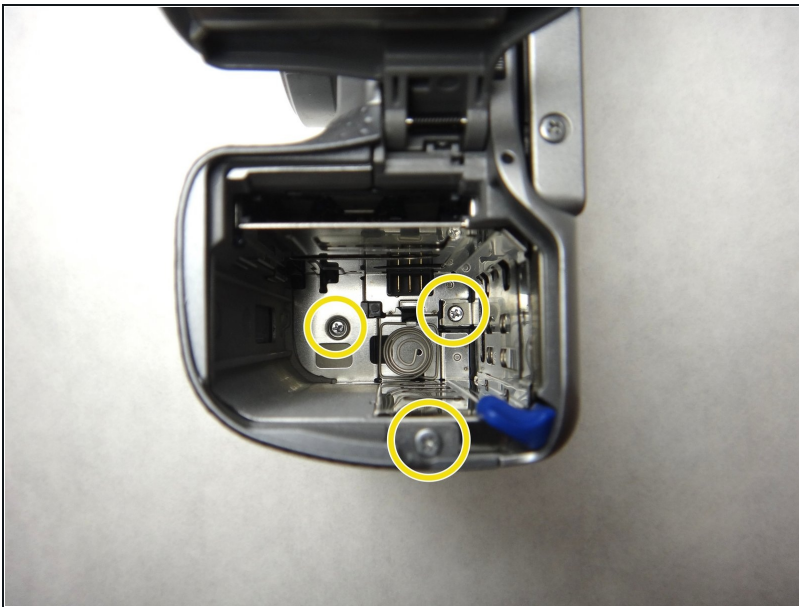
- Remove the three (3.5 mm) screws from the bottom of the camera with the Phillips screwdriver.

Step 2



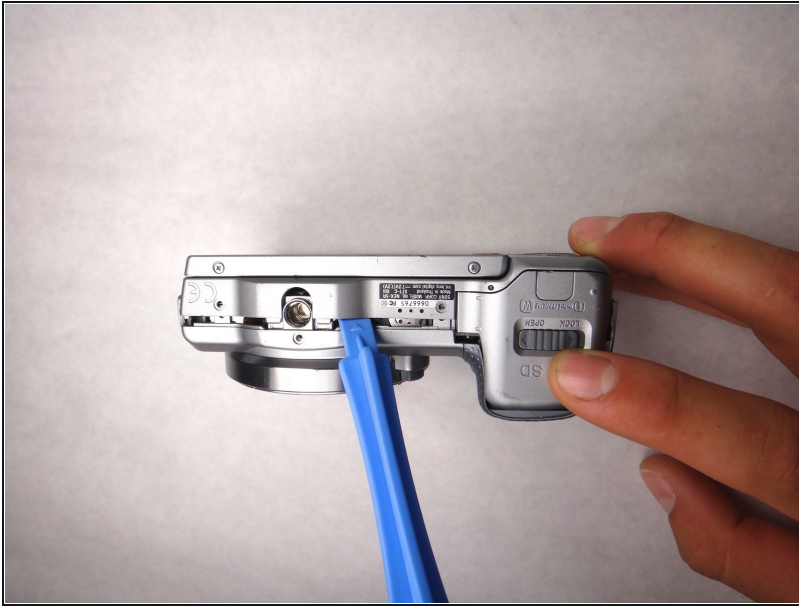
- Open the HDMI port, and remove the the two (3.5 mm) Phillips screws exposed on that side.

Step 3



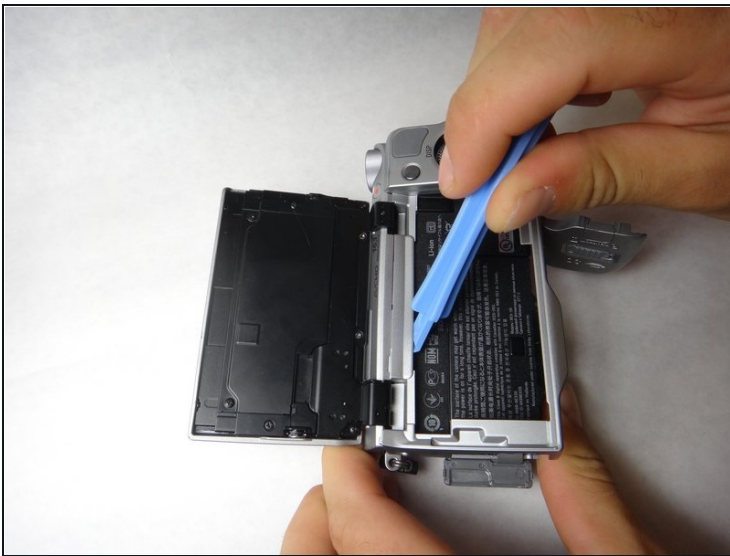
- Remove the two 4mm screws from the interior of the battery pack, and one 3.5mm screw from beside it.

Step 4



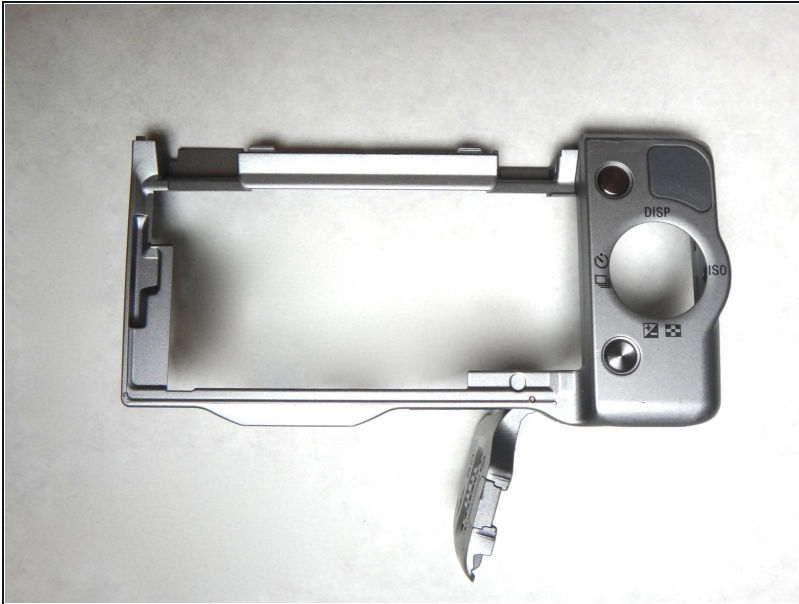
- Looking at the bottom of the camera, use the spudger to lift the rear case away from the camera body.

Step 5



- Using the spudger again, carefully pry from the top of the camera to remove the back frame.
- The back frame is fragile, so use the spudger gently.

Step 6



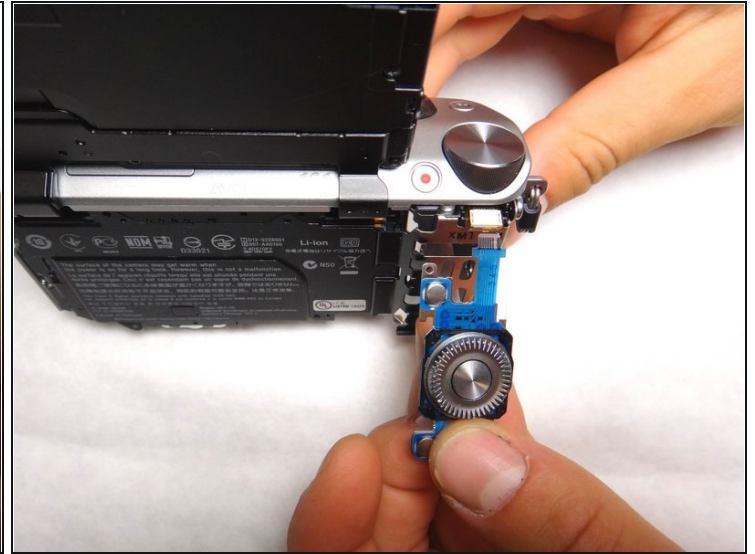
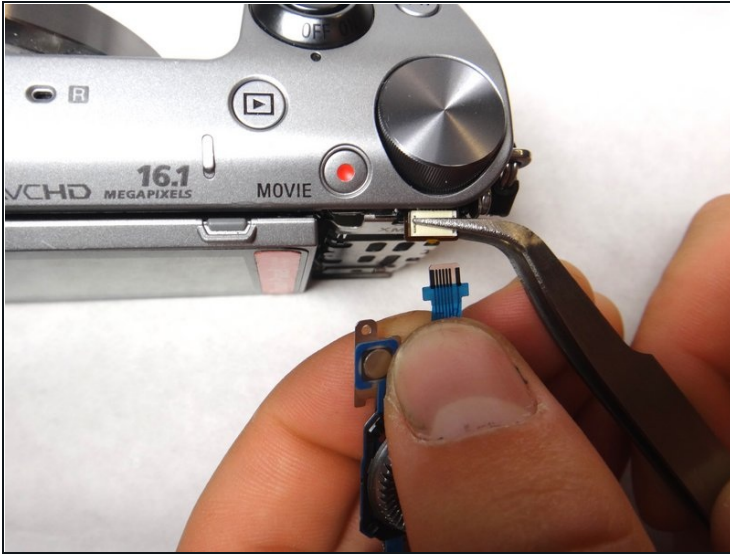
- The back case should now be removed and look like this.

Step 7 — Main Navigation Button



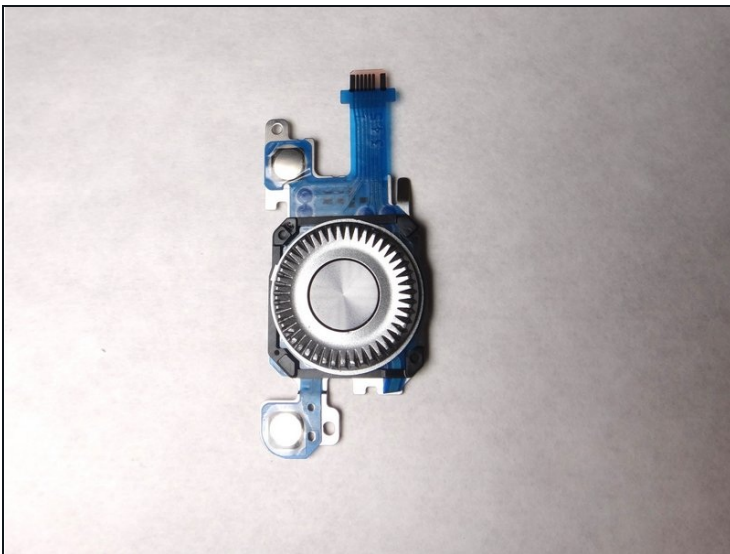
- Use spudger to pull the lead out from its housing.

Step 8



- Squeeze the lead with the [tweezers](#) and hold the lead teeth tightly with your fingers. Pull straight out to disconnect.

Step 9



- The navigation button component should now be separate and able to be replaced with new component. The camera and navigation button should appear as shown.

To reassemble your device, follow these instructions in reverse order.