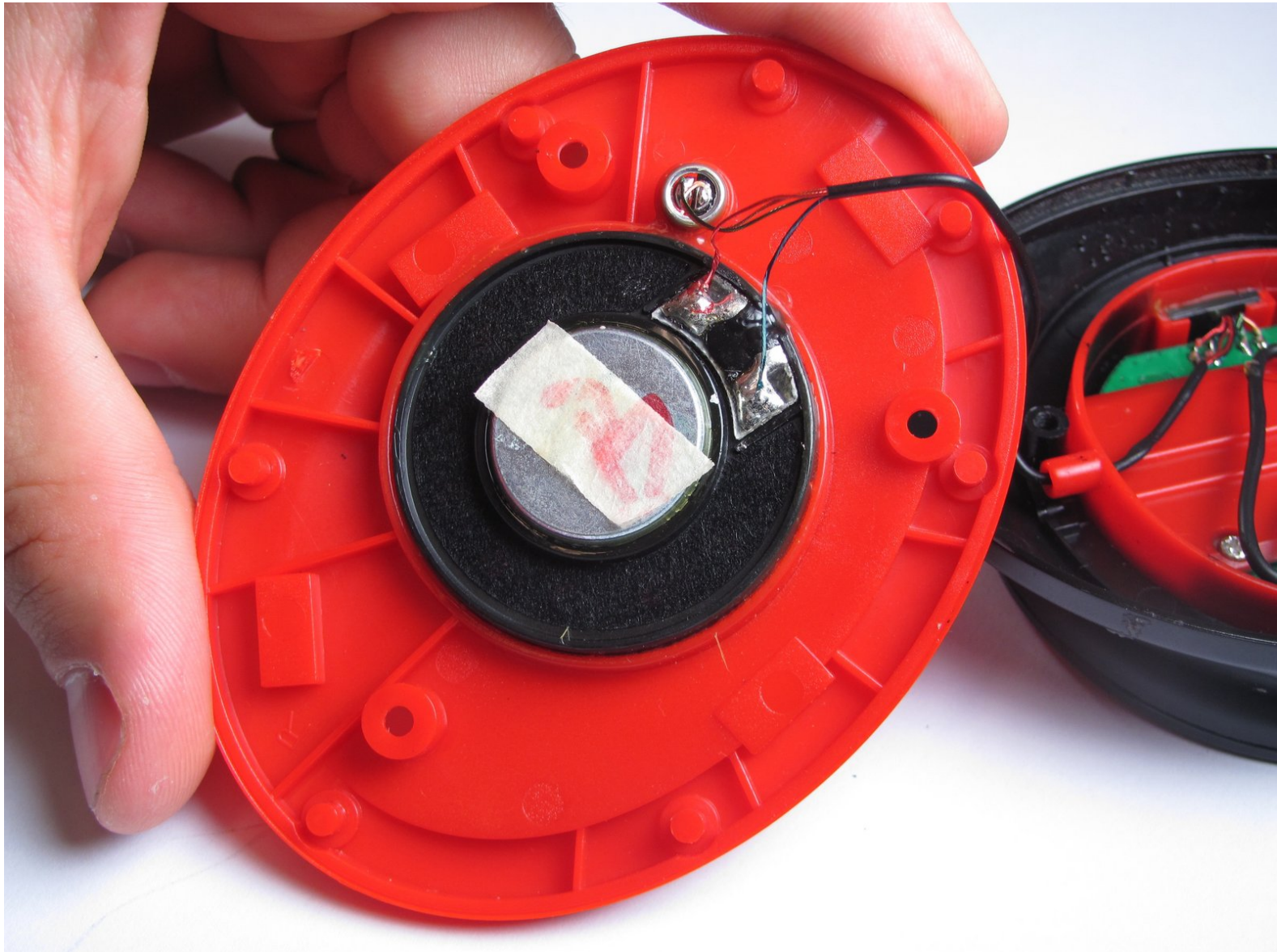




Beats Studio First Generation Speaker Replacement

Take apart your First Generation Beats Studios to access the speaker assembly.

Written By: Clay Jacobs



INTRODUCTION

Use this guide to take apart your First Generation Beats Studios and replace the speaker.



TOOLS:

- [#0 Phillips Head Screwdriver](#) (1)
- [T5 Torx Screwdriver](#) (1)
- [iFixit Opening Tools](#) (1)
- [Tweezers](#) (1)



PARTS:

- [Beats By Dre. Studio Speaker Assembly](#) (1)

Step 1 — Removing the outer headband screws.



- Using the T5 Torx screwdriver, remove the black screws on both sides of the outside of the headband.
- 4 (2 per side) Torx type T5, 3.5mm long screws.

Step 2 — Removing the plastic hinge guards.



- Use the plastic opening tool to **gently** pry the black plastic hinge piece directly away from the headband as shown.

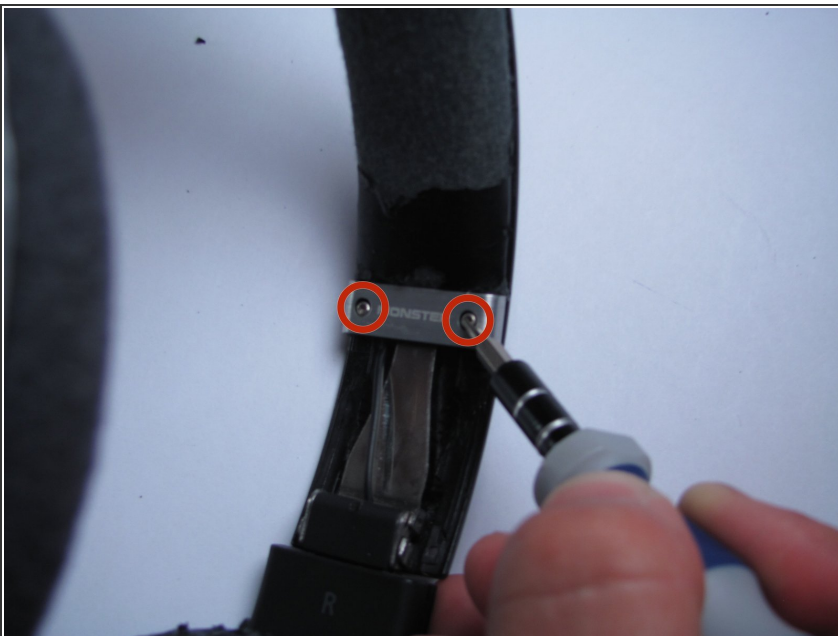
Step 3 — Removing the hinge pins.



- Remove the small metal hinges from their housings. There are a total of 4 hinges, two per side of the headphones.

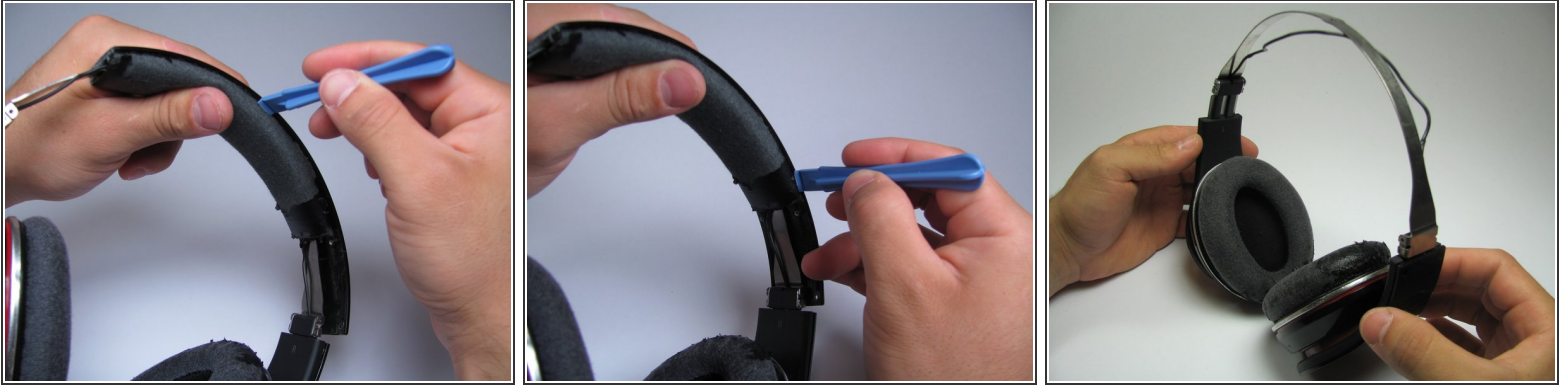
⚠ The hinge pins may slide out upon removal of the black hinge piece from the previous step. Be careful not to lose the hinge pins.

Step 4 — Removing the metal bands.



- Using a T5 Torx screwdriver, remove the silver screws from the silver segment of the headband.
- 4 (2 per side) Torx type T5, 4.0mm long screws.

Step 5 — Removing the headband cushion.



- Using the plastic opening tool, **gently** pry the headband cushion directly away from the plastic portion of the headband as shown. Pry the plastic portion a small amount and then move the opening tool sideways along on the headband. Repeat on both sides until the cushion separates from the top plastic part of the headband.

Step 6 — Removing the metal headband support.



- Carefully remove the metal band from each of the hinge housings on each side. These should come off quite easily, provided that you have removed the hinges as instructed in step 3.
 - Congratulations, you have completely removed the headband! This will allow for ease of accessibility to the speakers should you choose to delve further into the depths of your headphones.
- ⚠ The black wire connecting the two speakers is somewhat fragile! Check that it isn't frayed. If it is frayed, consider repairing it with some electrical tape, splicing it, or replacing it.

Step 7 — Removing the ear cushion.



- Pinch the ear cushion between your thumb and forefinger.

⚠ Be very careful when pulling off the ear cushion, as the material holding the cushion onto the plastic ring can rip easily.

- **Carefully** pull the cushion directly away from the earpiece.

⚠ The cushion will have a thin piece of foam inside of it that may fall out upon removal. Make sure to save this for reassembly.

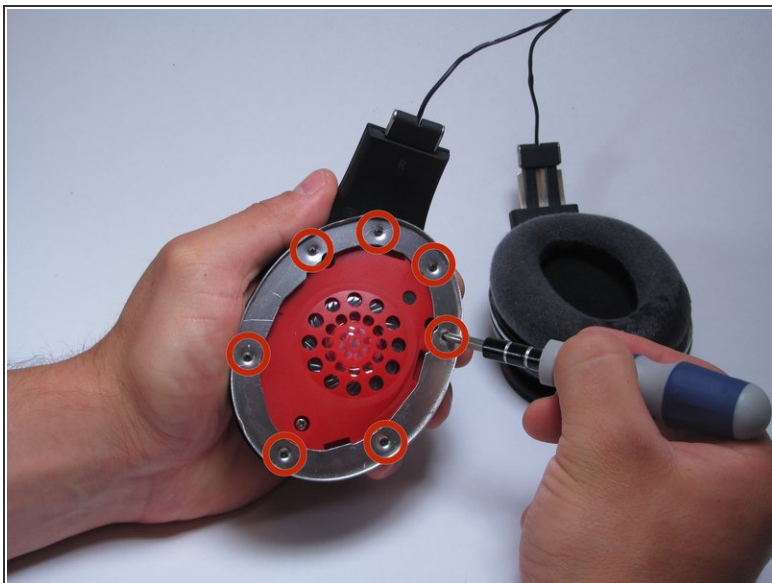
- Repeat for the other ear cushion.

Step 8 — Removing the plastic ring.



- Use the plastic opening tool to remove the black ring from the speaker. This will allow you to access the screws on the metal ring.
- Congratulations, you now have access to the rest of the speaker!
- i** **For reassembly, the black ring cannot snap back into the speaker the way it was disassembled. It must first go inside the black lip of the ear cushion. The black lip is located on the back side of the ear cushion. Please refer to the last two pictures on this step.**
- The black lip is located on the back side of the ear cushion.

Step 9 — Speaker



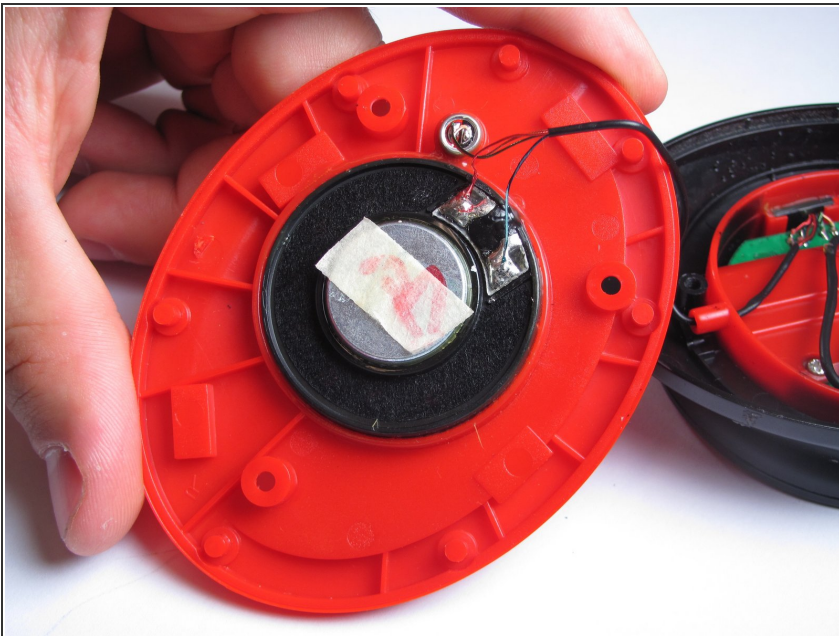
- Use a 00 Phillips head screwdriver to remove the 3.9 mm Phillips screws holding the metal ring in place. There should be 7 in each earpiece.
- ⓘ Make sure the screws you've already removed don't fall into the speaker itself (the circular arrangement of holes on the red piece directly below the metal ring). The speaker itself is magnetic, so getting screws out can be tricky. You should have tweezers available in case a screw or other piece of metal does fall into the speaker.
- Once all the screws are removed, the metal ring can be removed by hand.

Step 10



- Use a 0 Phillips head screwdriver to remove the 8 mm Phillips screws holding the speaker assembly in place. There should be 3 screws in each earpiece.
- When all screws have been removed, the speaker assembly can be moved by hand. Remove the speaker carefully since the wires connect to it on the backside.
- ☑ Again, make sure no screws fall into the speaker itself.

Step 11



- Flipping the speaker assembly over reveals the speaker wire connections to the speaker itself.
- Check that the wire is intact and not frayed anywhere.
- If necessary, the wires can be de-soldered to disconnect and replace the speaker assembly.

Step 12



- If the black part directly beneath the speaker assembly is broken and needs to be replaced, it can be easily removed by hand.
- ⓘ If replacing the speaker on the side of the headphones with the power button (as shown in photos), upon reassembly, make sure the foam is inserted as shown in the first picture. If it is forgotten or improperly seated, the speaker could make undesirable vibrations.

To reassemble your device, follow these instructions in reverse order.