



Samsung Gear 2 Motherboard Replacement

In this repair guide, you will be shown how to...

Written By: Allison Michel



INTRODUCTION

In this repair guide, you will be shown how to replace the motherboard.

TOOLS:


[Tweezers](#) (1)
[Spudger](#) (1)
[T5 Torx Screwdriver](#) (1)

PARTS:

[Samsung Gear 2 Motherboard](#) (1)

Step 1 — Front half and Back half



-  Before disassembling your Gear, be sure it is powered off.
- To remove each strap, locate the metal latches on both sides of the back of the Gear.
- Press down on the metal latch while pulling the strap away from the Gear until it is completely off.

Step 2



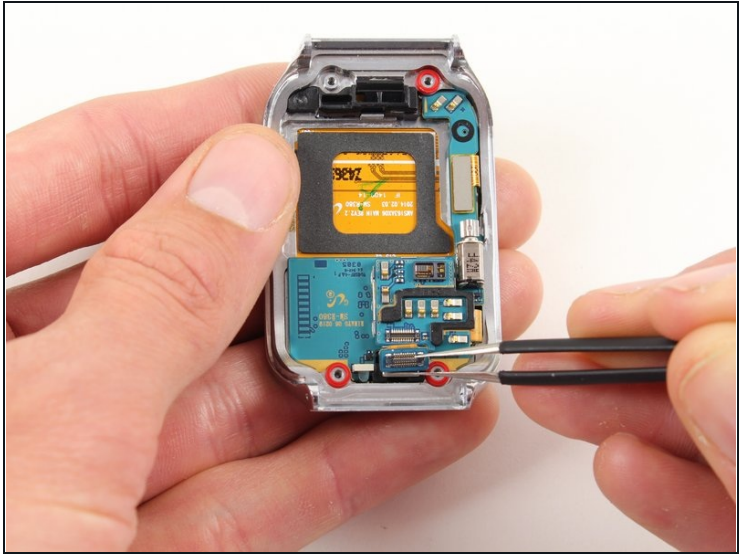
- Remove the four 4.0 mm screws on the back of the Gear using a T5 Torx Screwdriver.

Step 3



- Firmly holding the Gear, insert the flat side of the spudger at an angle to pry the back casing off of the device. Move the spudger along the sides of the Gear to completely detach the back and front components.
- Pry the device open from the other side also if it does not fully disassemble from one side.

Step 4 — Camera



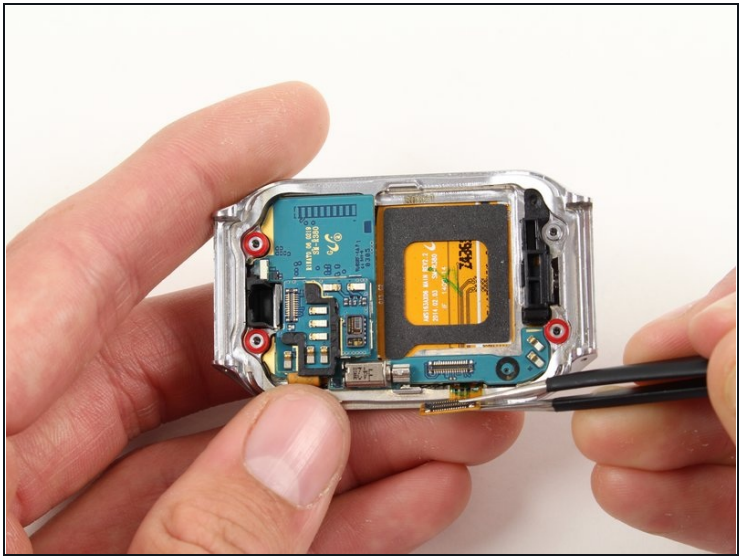
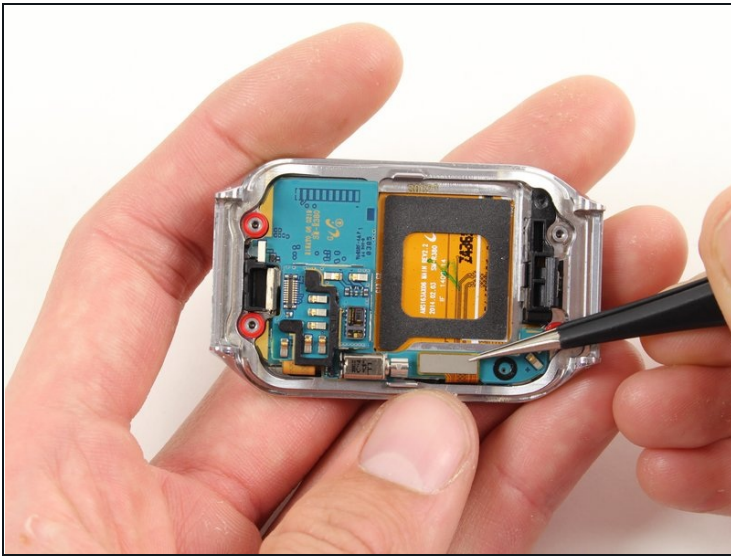
- Locate the rectangular metal connector that attaches the camera to the Gear.
- Use [tweezers](#) to gently lift and detach the metal plate of the connector.
- ☑ When reassembling the Gear, reattach the camera connector by carefully aligning the metal plate and its pins to its original placement. Make sure it snaps in place to avoid improper connections and possible damage.

Step 5



- Use tweezers to carefully lift the camera from its slot out of the case.

Step 6 — Motherboard

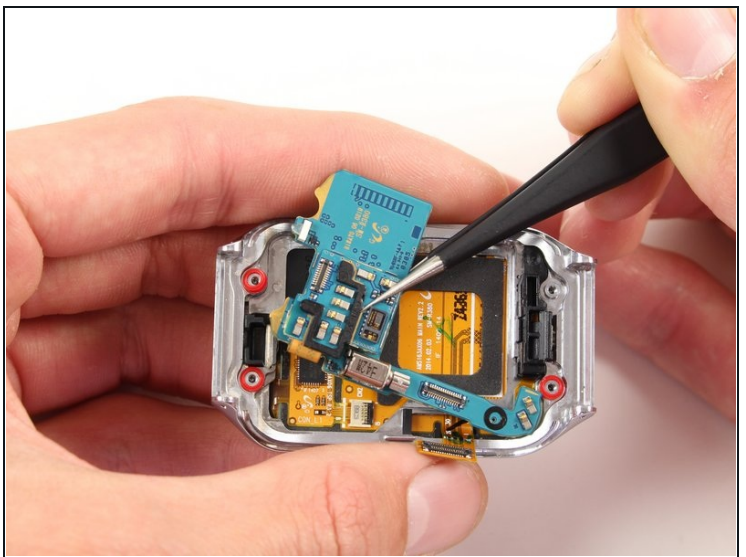
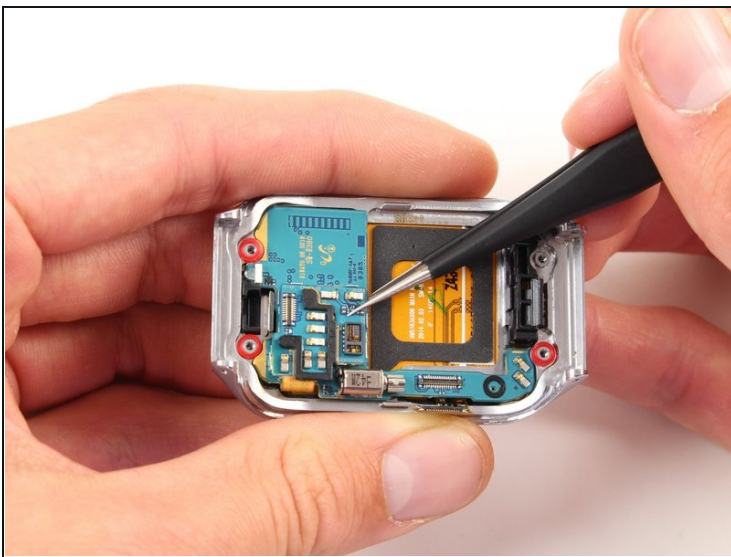


- Use [tweezers](#) to grab and then gently lift up the metal plate of the safety belt.

⚠ When removing the metal plate, be sure to remove them carefully as to not rip the orange tape that is attached to them.

- ☑ During reassembly, be sure to line up the pins of the metal plate in order to reattach correctly.

Step 7



- Once the safety belt is removed, use tweezers to take the motherboard out of the Gear 2.

To reassemble your device, follow these instructions in reverse order.