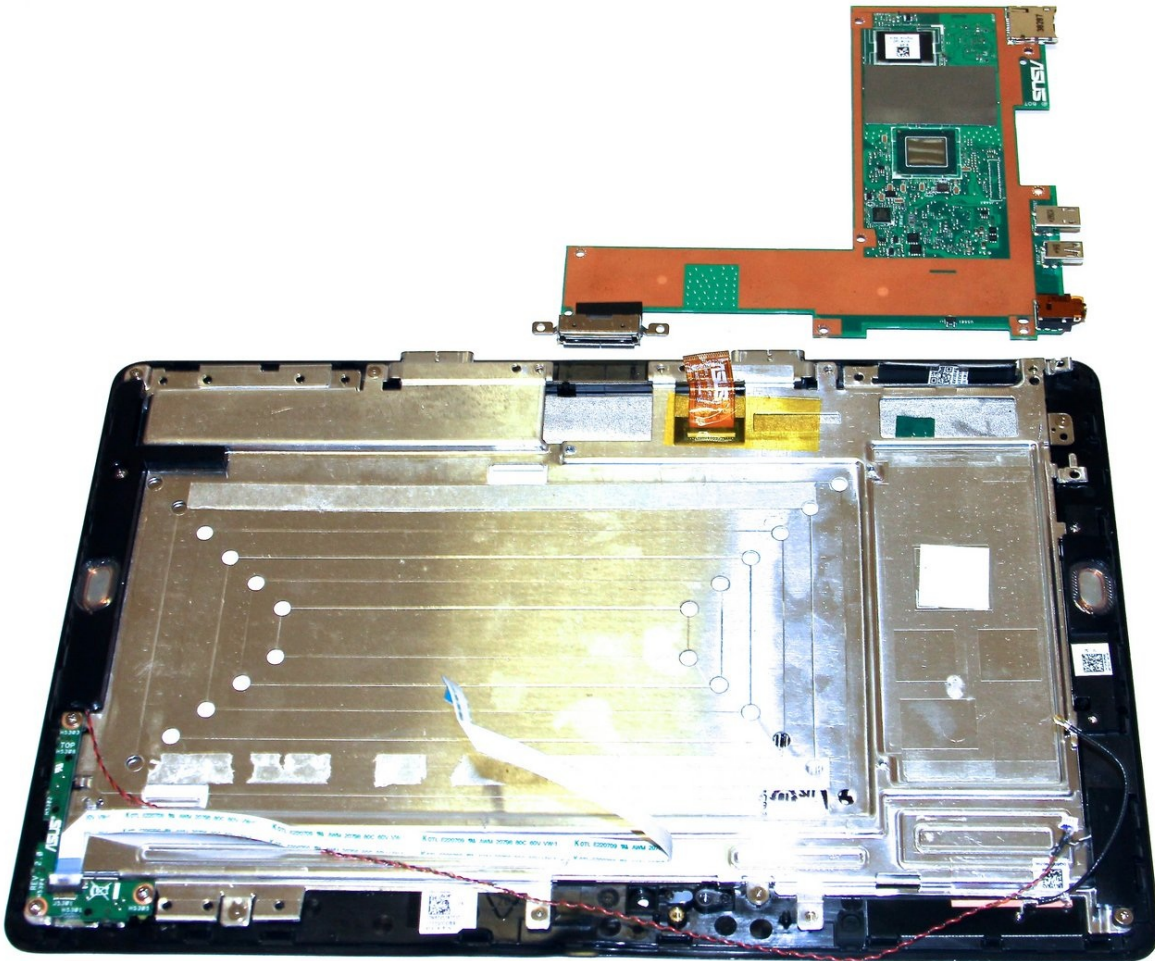




Asus Transformer T100 Motherboard Replacement

The motherboard of the device is the tablet's...

Written By: Taylor Pantiga



INTRODUCTION

The motherboard of the device is the tablet's main processing unit. To reach it, the plastic backing, battery, and camera must be removed.

TOOLS:

[iFixit Opening Tool](#) (1)
[Spudger](#) (1)
[Tweezers](#) (1)
[Phillips #1 Screwdriver](#) (1)

PARTS:

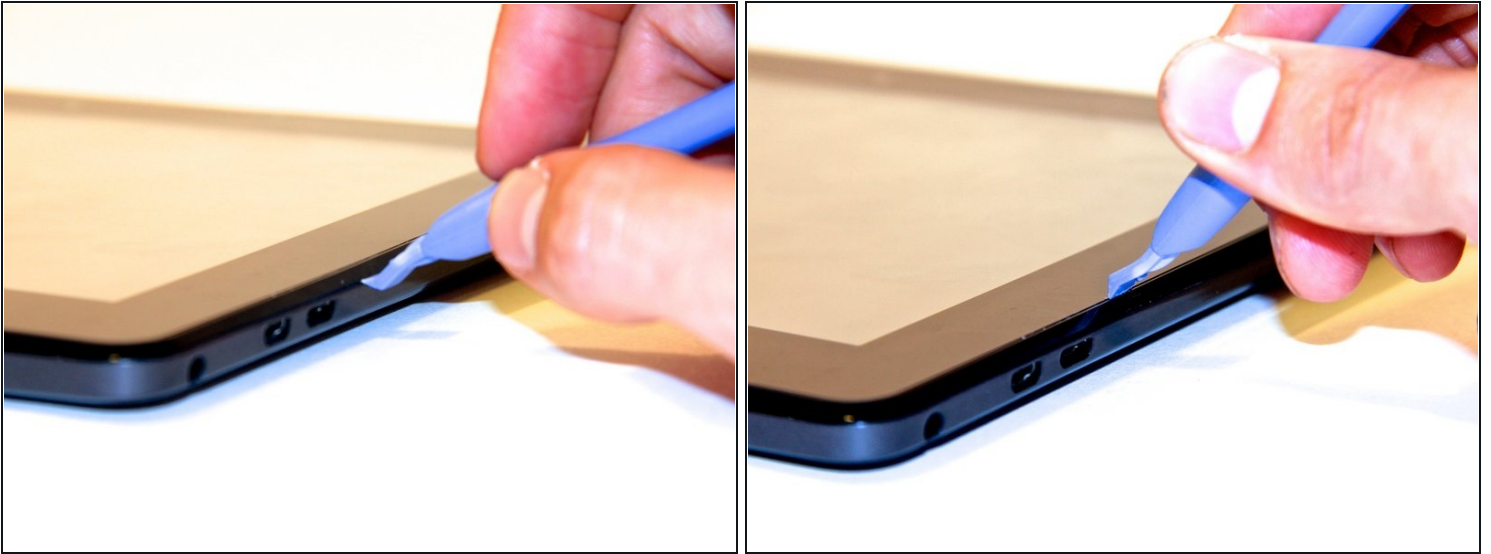
[ASUS Transformer Book \(T100\)](#)
[Motherboard](#) (1)

Step 1 — Rear Cover



- Separate the tablet from the base by pressing the large silver button below the tablet. The silver button is located at the base of the tablet.
- Remove the tablet by lifting up.

Step 2



- Insert the opening tool into the seam of the tablet casing and gently pry upwards.
- With a little force, you will feel the clips release.

Step 3



- Slide the tool along all four edges of the tablet, making sure that all the clips are released.

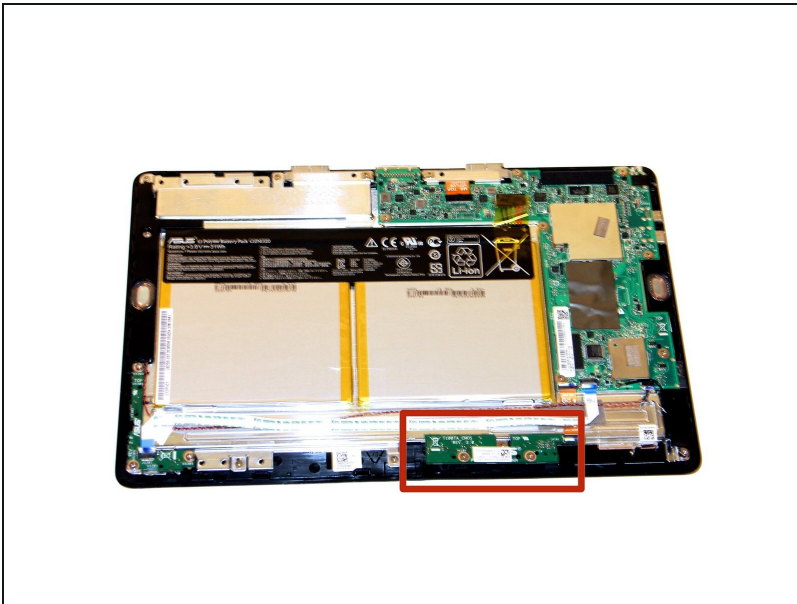
⚠ Do not break these clips; otherwise, the screen will become less secure.

Step 4



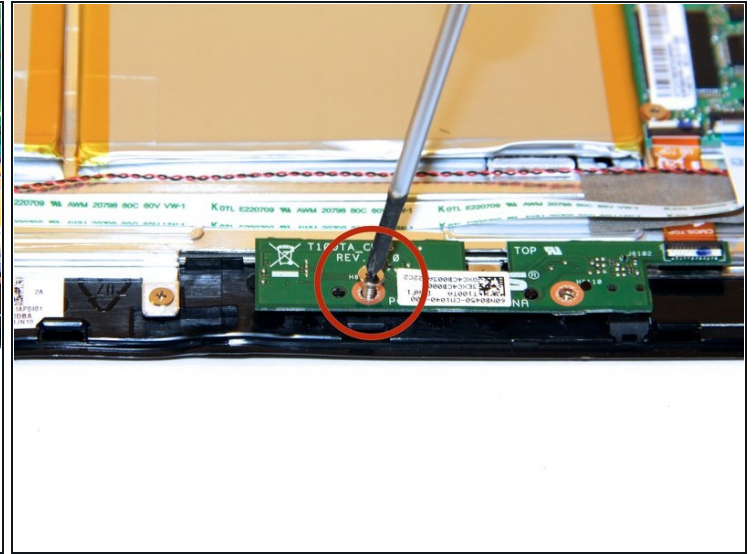
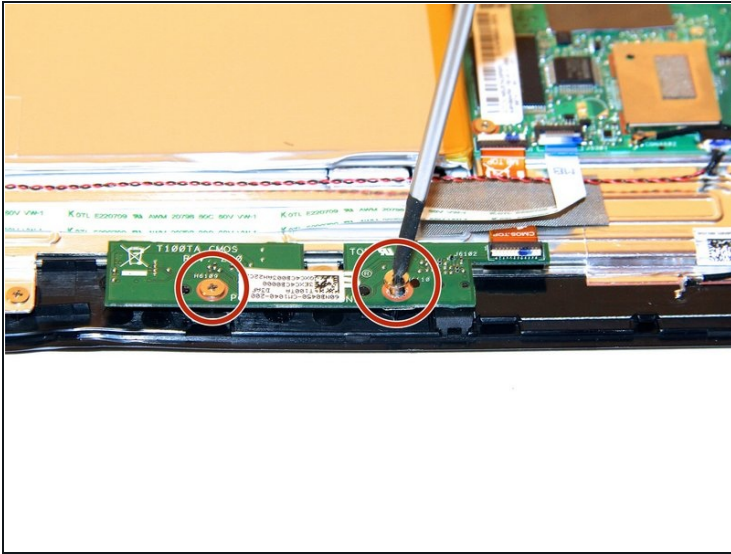
- Remove the rear casing.

Step 5 — Front Facing Camera Board



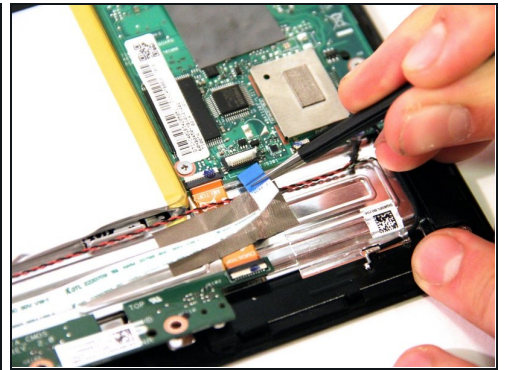
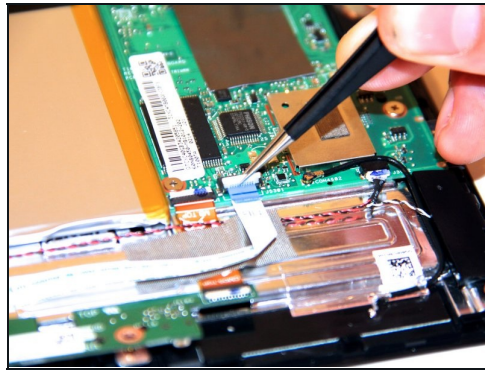
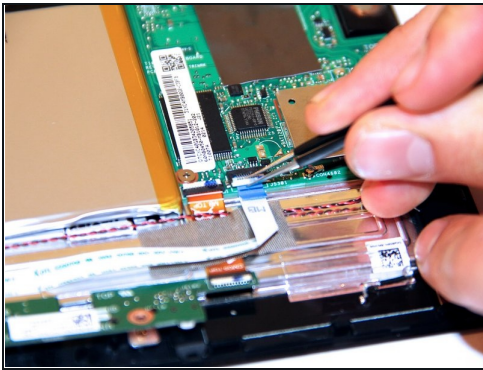
- The camera board is located in the red square in this image.

Step 6



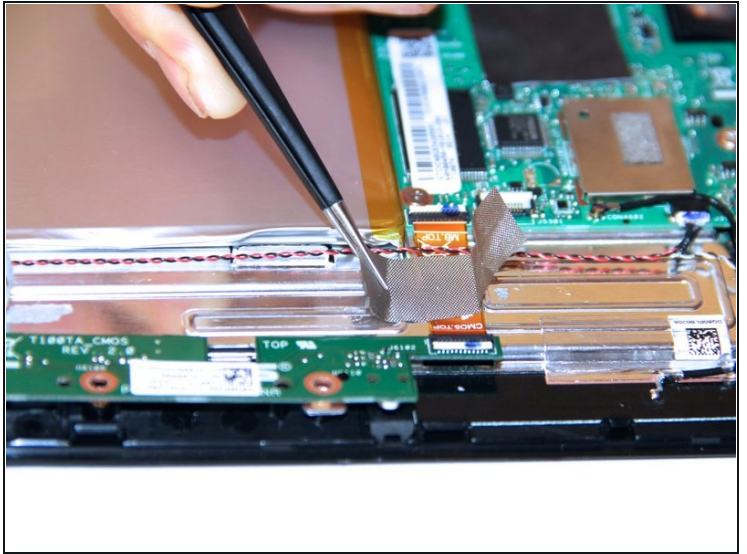
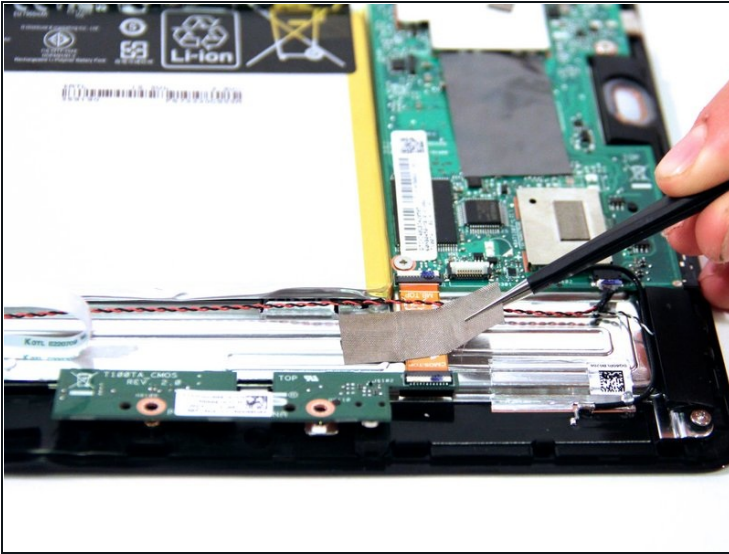
- Remove the two screws on the camera board using a Phillips #1 Screwdriver.

Step 7



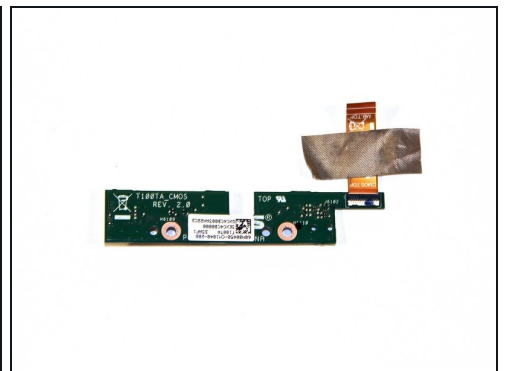
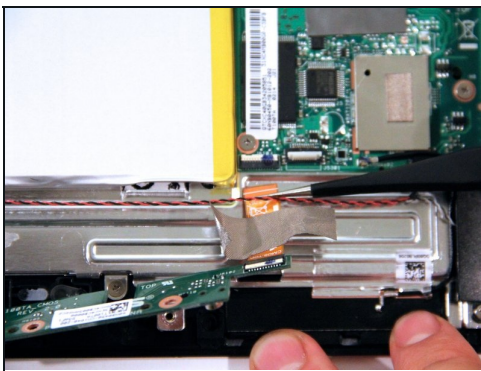
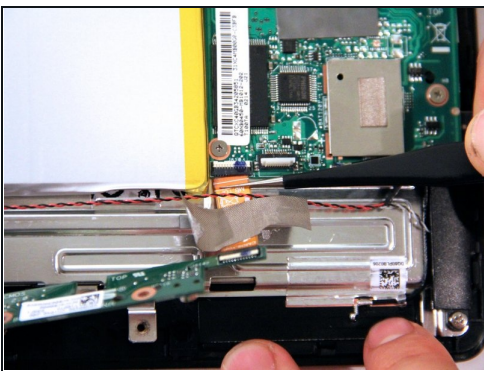
- Lift up the power button cable retention clip on the motherboard and pull the cable out.

Step 8



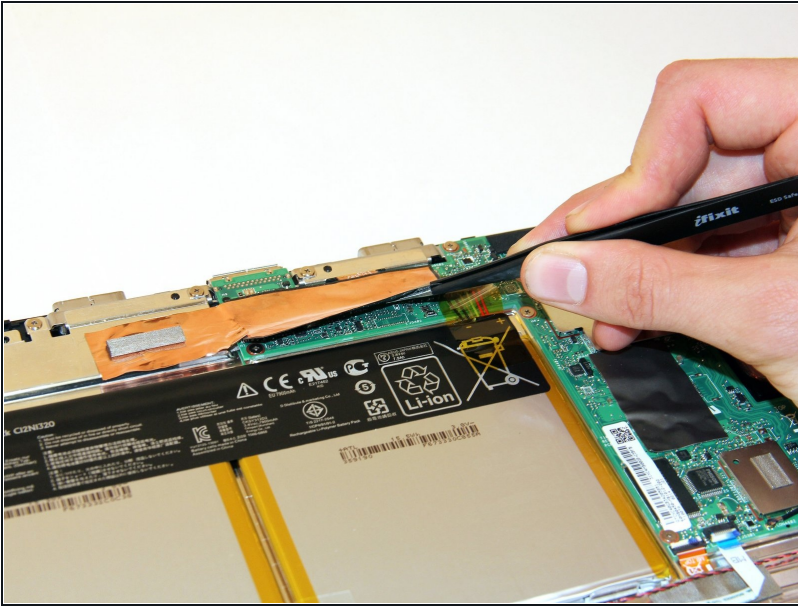
- On the camera connection apparatus, locate the silver tape that connects to the tablet.
 - Peel the silver tape off of the tablet on both sides of the connection apparatus.
- ① If this step has been completed correctly, the camera board should be loose, with the tape still attached to the connection apparatus.

Step 9



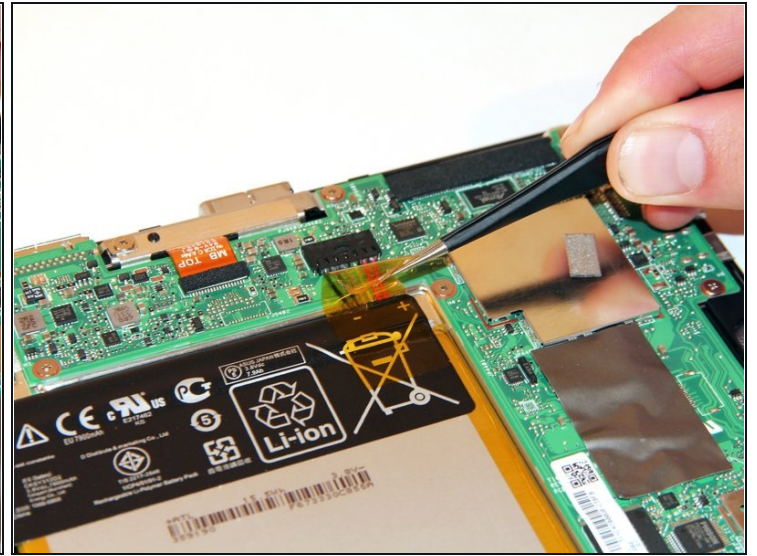
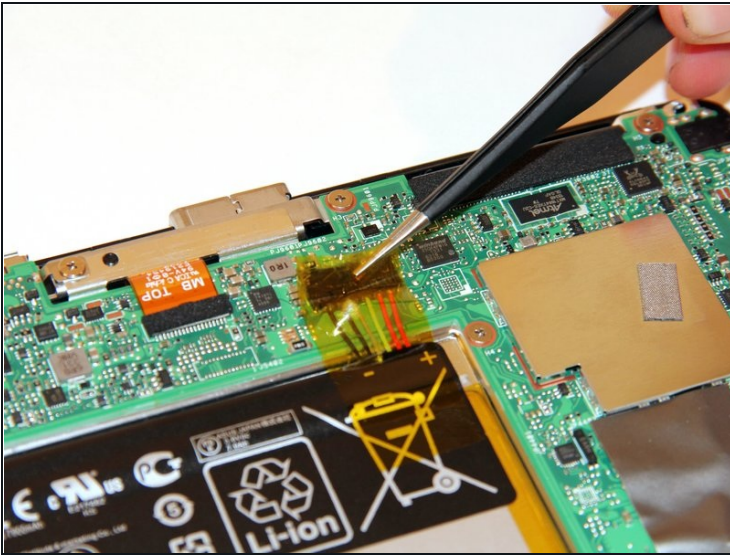
- Gently pull the Orange ribbon cable out of the connection port.
- ① This port has no clip. The orange apparatus should slide out with a small tug.

Step 10 — Battery



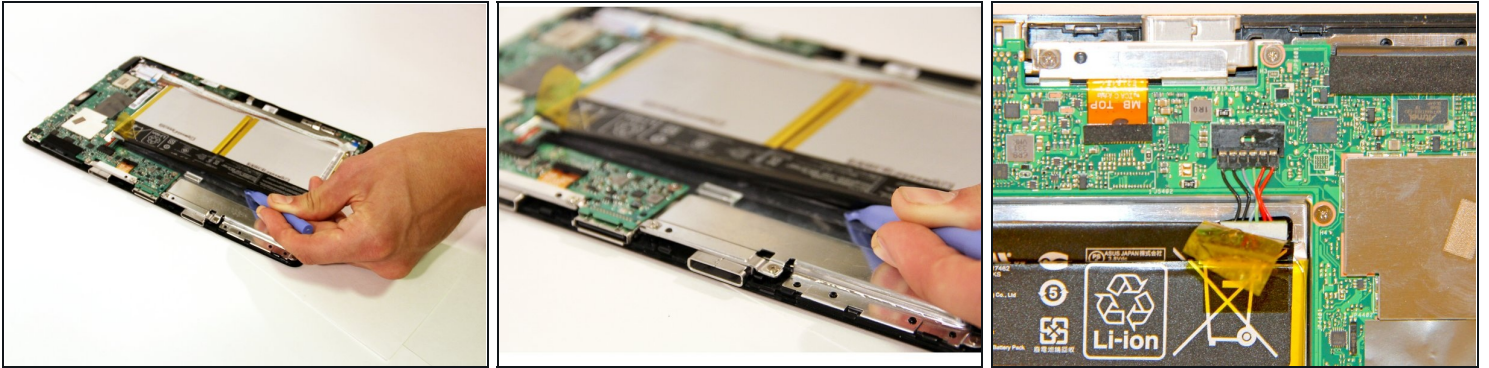
- Remove the copper tape carefully.

Step 11



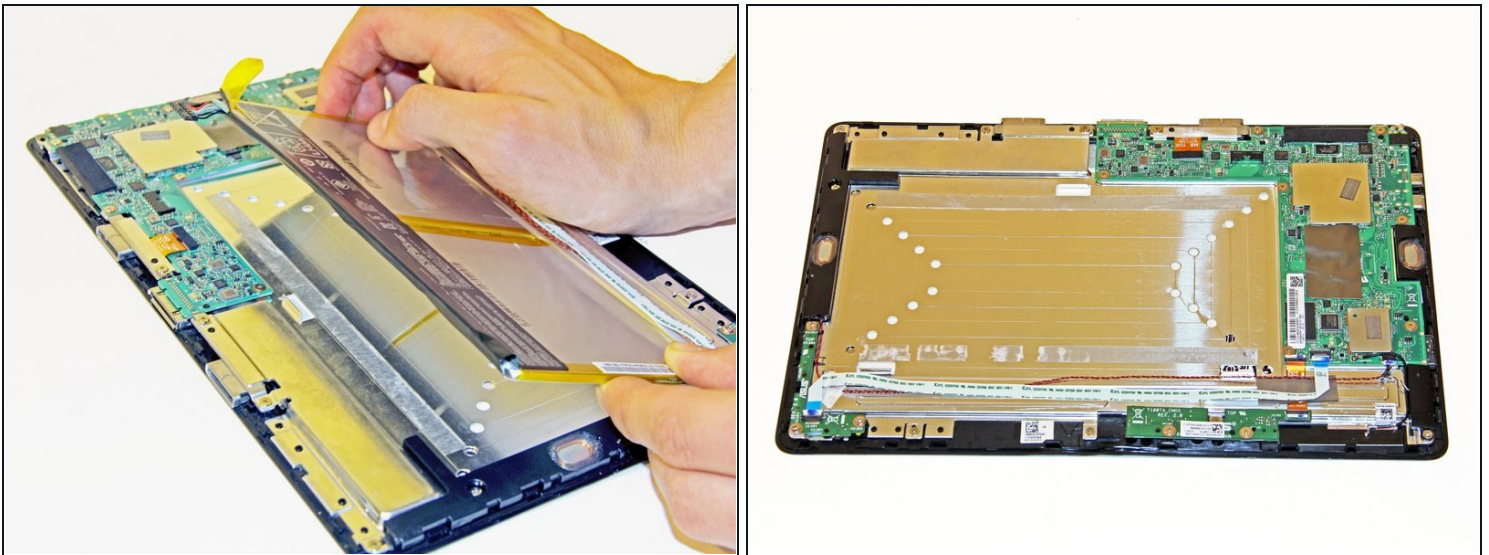
- Gently pull back the yellow transparent plastic covering on top of the battery connection port.

Step 12



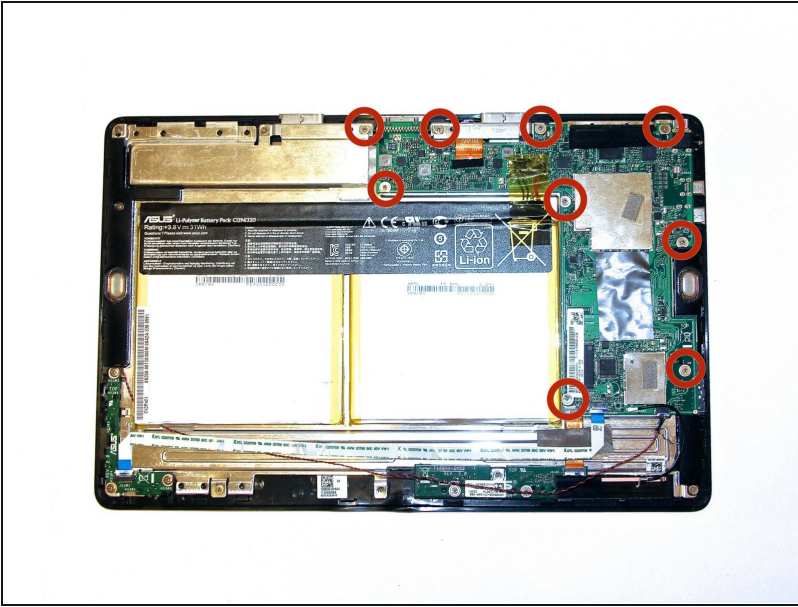
- Rotate the device so the top of the screen is facing you. Place the plastic opening tool underneath the battery and gently pry upwards to lift the battery out.
- ① The battery wire harness will slide out as the battery is pried up.

Step 13



- Remove the battery by slowly peeling the battery away from the connected side.
- The adhesive on the back will pull away from the battery.

Step 14 — Motherboard



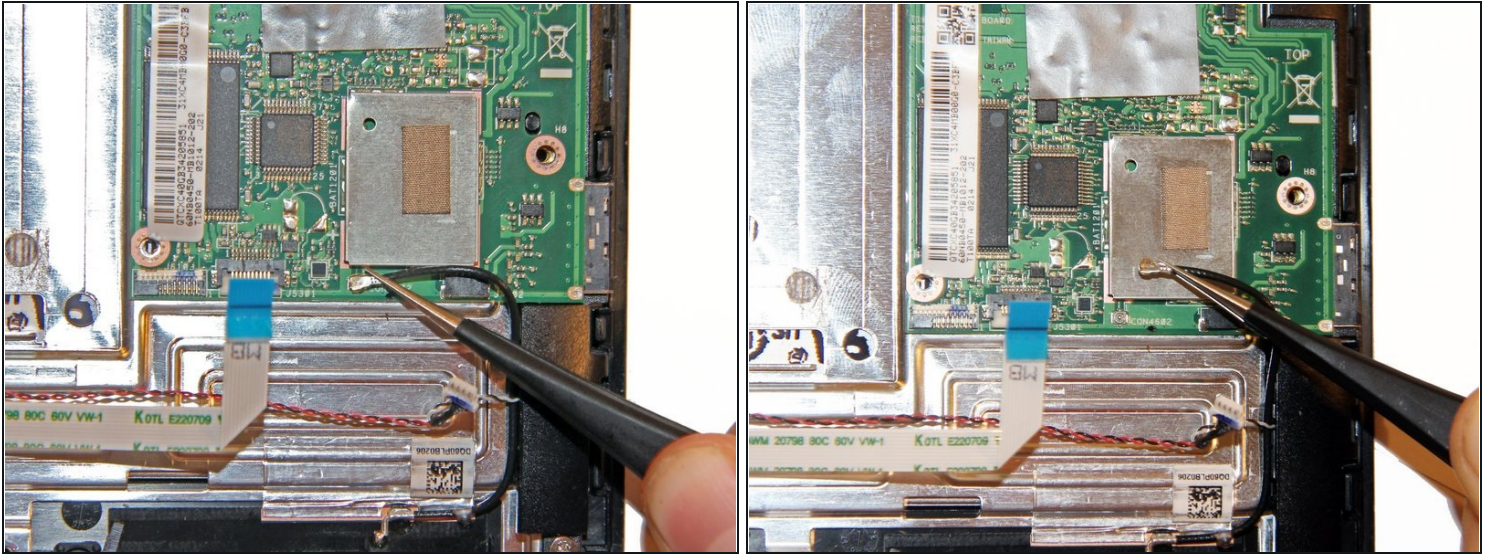
- Remove the marked screws by using a Phillips #1 screwdriver.

Step 15



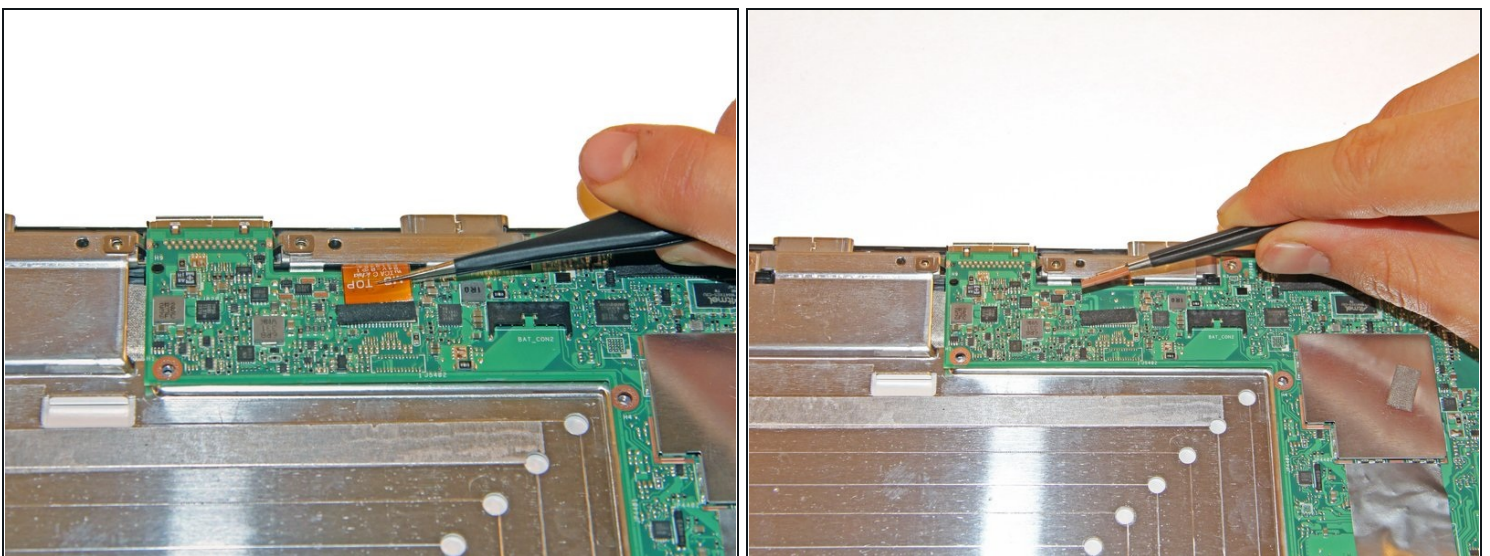
- Locate the twisted black and red wire at the bottom of the motherboard.
- Use [tweezers](#) to gently slide the black and red wire out of the connection port on the motherboard.

Step 16



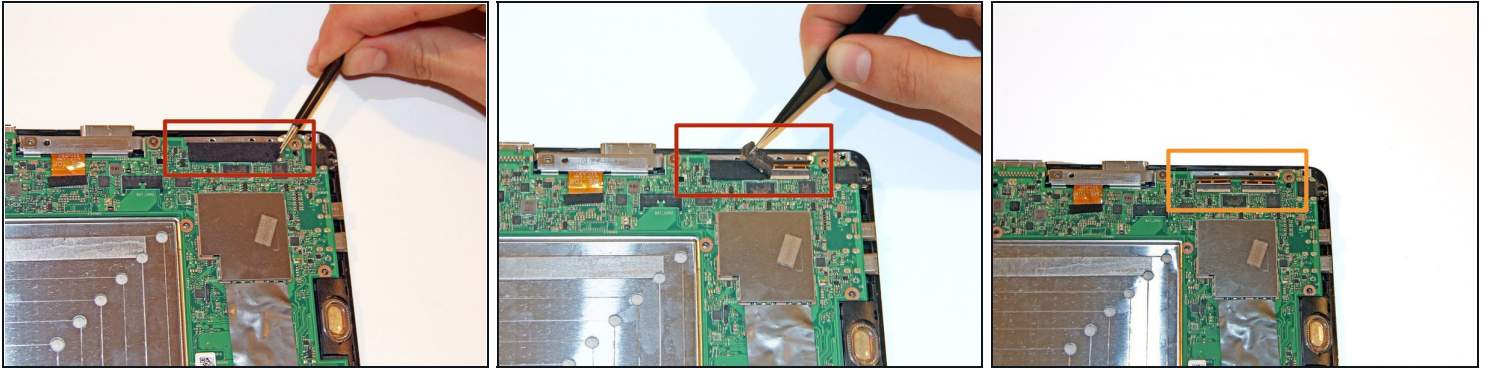
- Next to the black and red wire, locate a black wire with a silver connection ending.
- Use tweezers to disconnect that wire from the motherboard
- ① This wire disconnects in an upward motion, not in a sliding motion like the other connection ports.

Step 17



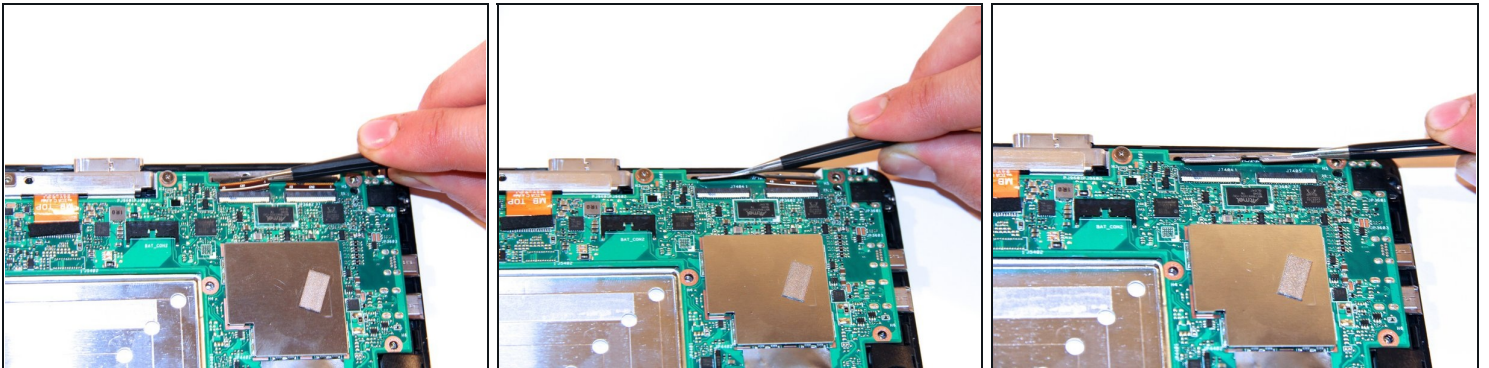
- At the top end of the motherboard, use tweezers to gently slide the orange connection apparatus out of the connection port.

Step 18



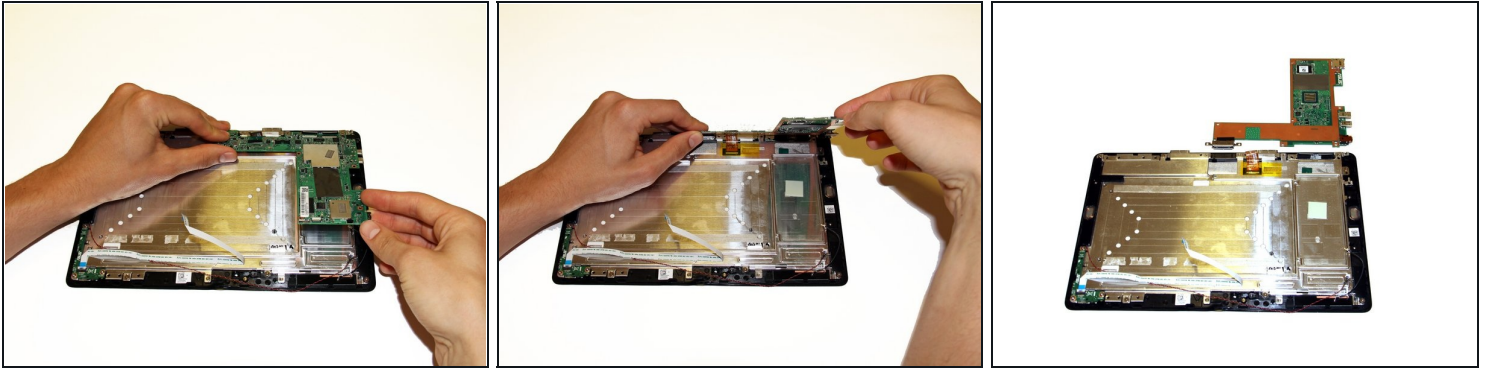
- Next to the orange connection apparatus port, locate the LCD connection apparatus.
 - Use tweezers to peel the protective layer off of the connection port.
- ⚠ Be careful where the tweezers are placed. Make sure that only the squishy protective layer is being grabbed and peeled off.
- Once the tape is removed, the LCD connection port should look like this.

Step 19



- Using the tweezers, gently remove the LCD connection apparatus from the LCD connection port.
- ⓘ This can be tricky because the LCD connection apparatus has two sections. It is advised to gently wiggle one side out and then slide the second side out after.

Step 20



- Using the top end of the motherboard as a hinge and fold the motherboard back so it rests outside of the tablet chassis.
- ① There is a small amount of adhesive on the back side of the motherboard, which provides a small amount of resistance to the folding motion.
- If done correctly, the motherboard should look the picture above.

To reassemble your device, follow these instructions in reverse order.