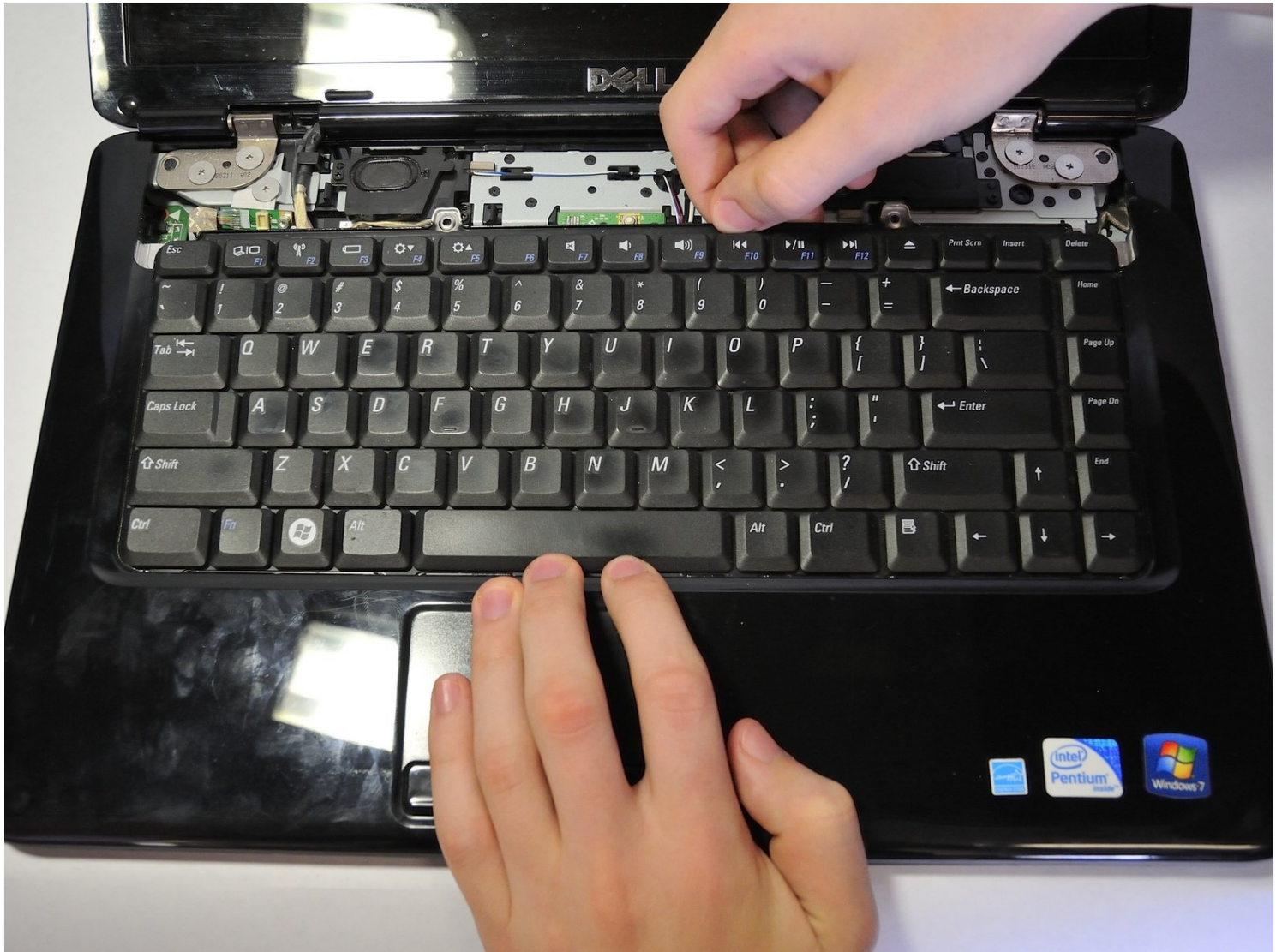




# Dell Inspiron 1545 Keyboard Replacement

There are multiple issues that can arise with...

Written By: Nathan Lemay



# INTRODUCTION

There are multiple issues that can arise with the keyboard, this guide will allow you to fix a number of them. Using this guide you can clean the keyboard or access some of the more complex components of the laptop.

## TOOLS:

[Phillips #1 Screwdriver](#) (1)  
[iFixit Opening Tool](#) (1)

## PARTS:

[Dell Inspiron 1545 \(PP41L\) Keyboard](#) (1)

## Step 1 — Battery



- ☒ Before attempting to remove the battery ensure that the laptop is disconnected from all power sources and turned off.
- Turn the laptop over to its back.

## Step 2



- Slide the release latch while simultaneously pulling backwards on the battery.

## Step 3



- Slide the battery out of the battery bay.



## Step 4 — Base Cover



- Unscrew the four screws (3mm Phillips #1) that hold the base cover in place.
- ⓘ The top 3 screws are "captive" (held in by a retaining ring) and will not come out.

## Step 5



- Carefully lift the base cover vertically away from the laptop.

## Step 6 — Center Control Cover



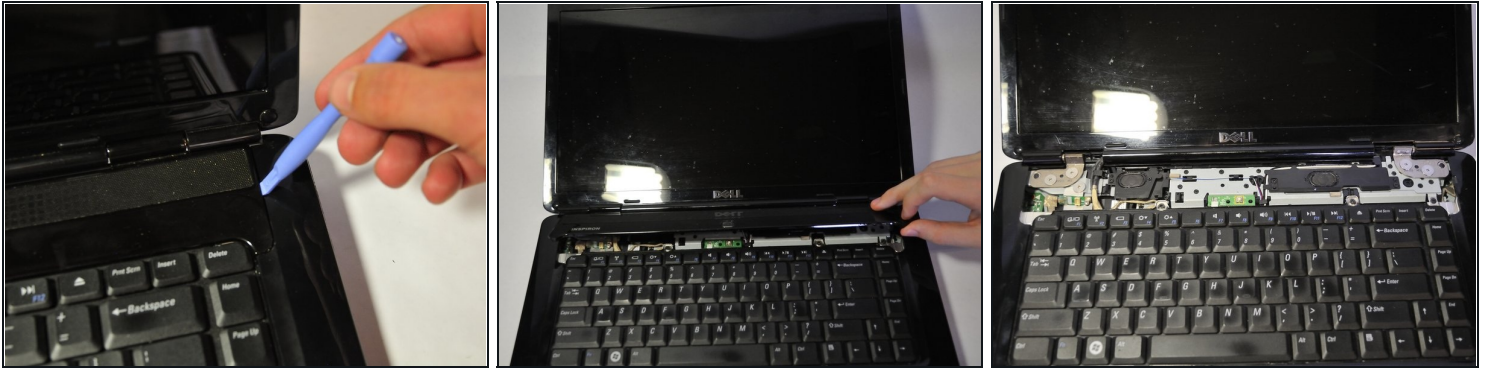
- After removing the battery, remove the two screws (3mm Phillips #1) beneath it. These screws hold the Center Control Cover in place.

## Step 7



- Flip the laptop over to the front and open the display as far as possible.

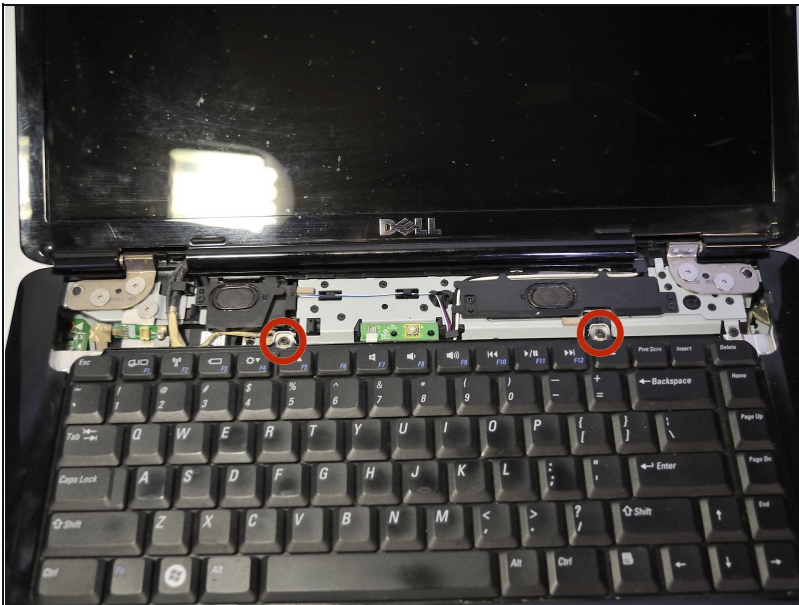
## Step 8



⚠ The Center Control Cover is VERY fragile, be careful when using prying tools.

- Pry the Center Control Cover from the laptop. On the right there is a small divot, it is advised that you start removing the panel from here.
- Carefully lift the Center Control Cover away from the laptop.

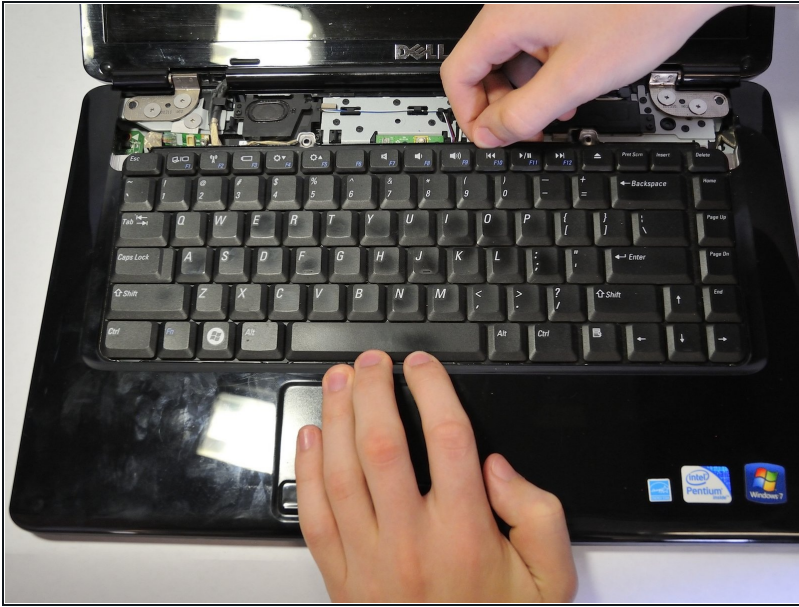
## Step 9 — Keyboard



- Remove the two screws (5mm Phillips #1) at the top of the keyboard.



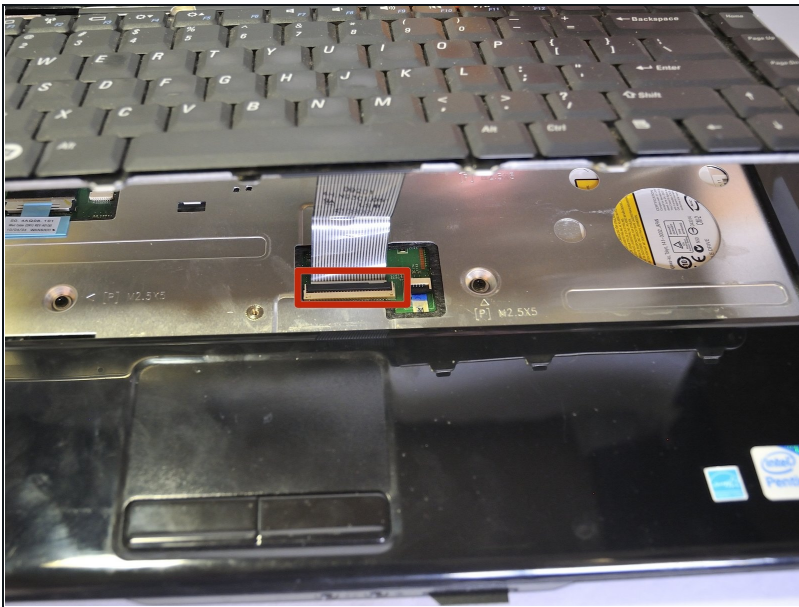
## Step 10



- Slide the keyboard out and away from the laptop and lift it up to access the keyboard connector.

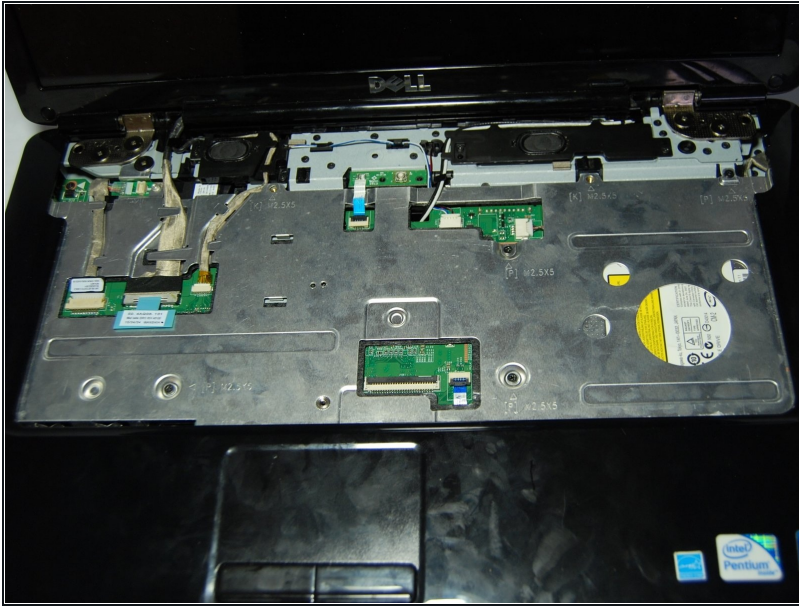
⚠ Do not pull hard on the keyboard while removing it, you may damage the keyboard or the keyboard connector.

## Step 11



- Lift the connector latch that secures the keyboard cable to the connector on the motherboard and remove the cable.

## Step 12



- Lift the keyboard up and away from the laptop.

---

To reassemble your device, follow these instructions in reverse order.