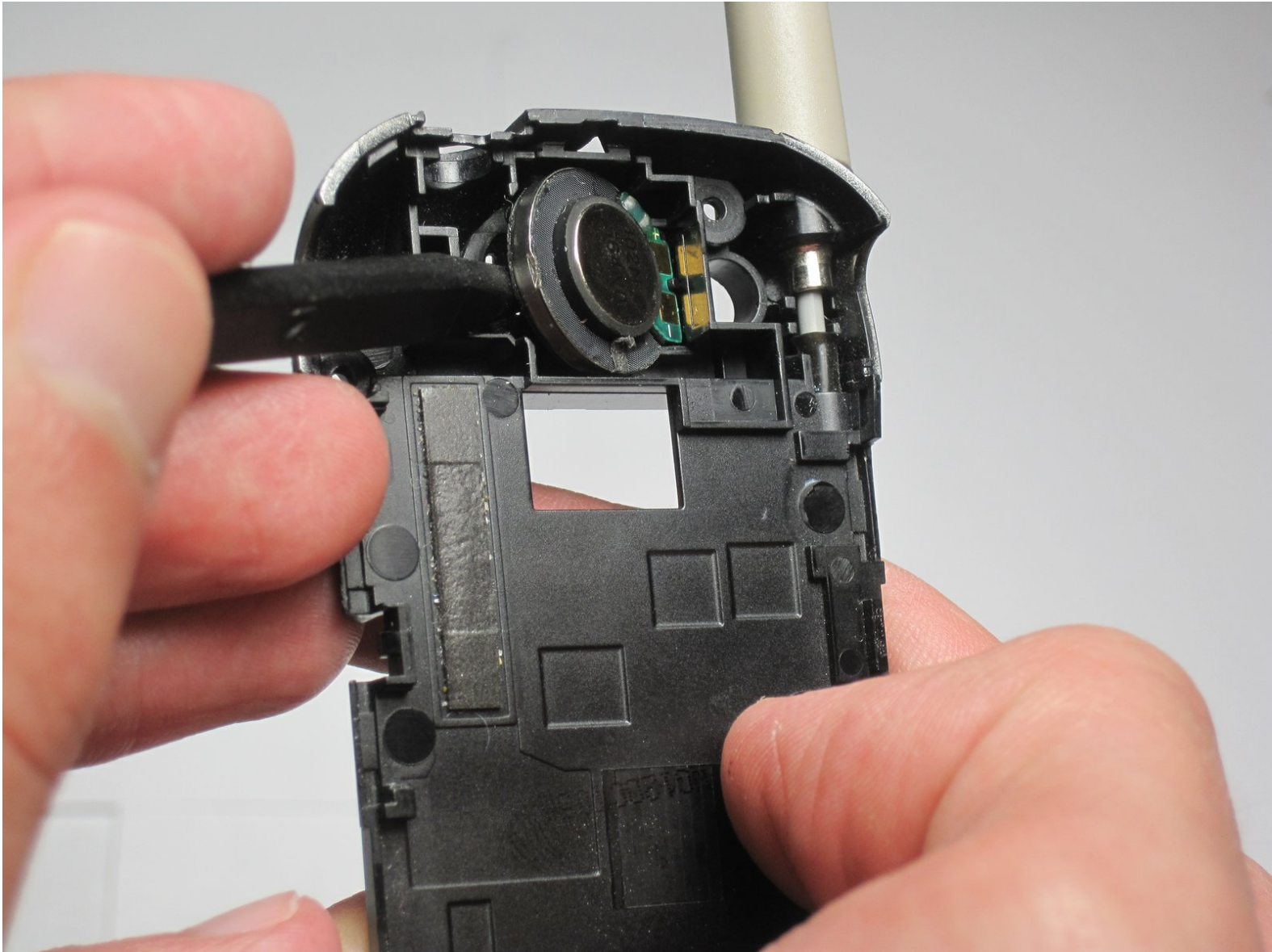




Motorola V276 Speaker Replacement

Written By: Kyle Klitzner



INTRODUCTION

This is a guide for replacing the back speaker for a Motorola V276 phone.



TOOLS:

- [Spudger](#) (1)
 - [T6 Torx Screwdriver](#) (1)
 - [Tweezers](#) (1)
 - [iFixit Opening Tools](#) (1)
-

Step 1 — Battery



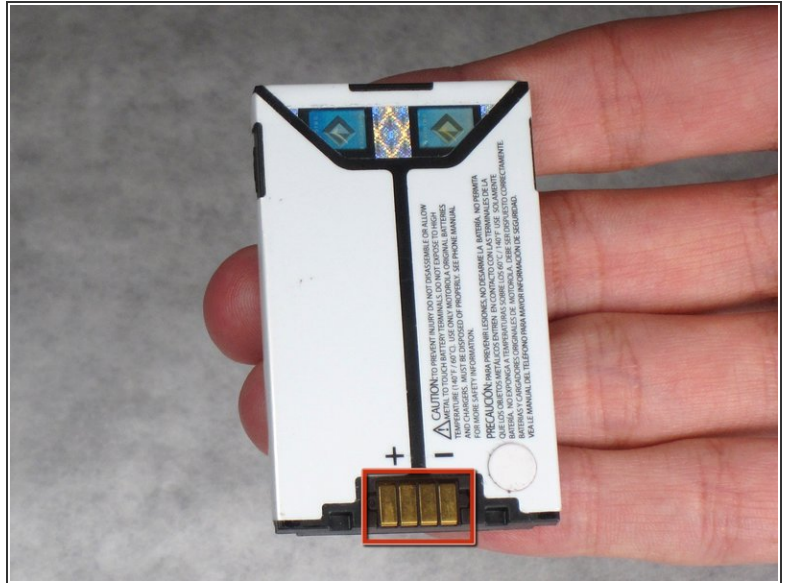
- Locate the silver button on the back of the phone, near the bottom.
- Depress the silver button with one hand and slide the back cover of the phone *away* from the antenna.
- ⓘ The back cover should slide off easily.

Step 2



- Insert a plastic spudger near one corner of the battery (preferably one furthest from the phone's antenna).
- Gently pry the battery up and away from the phone. The battery should easily raise out of its place.
- Now that the battery is exposed, use your fingers to remove the it from the phone.

Step 3



- Note the metal connections on the phone, which are now exposed with the battery removed.
- There are corresponding metal connectors on the replacement battery.
- When you install the battery, be sure both connectors are matched up. Otherwise, your battery will be unable to supply power to your phone.

Step 4 — Speaker



- Use Spudger to remove rubber plug from upper left corner of the back of the phone

Step 5



- Using a Hex T6 screwdriver, remove the 4 screws holding the back plate of the phone in place

Step 6

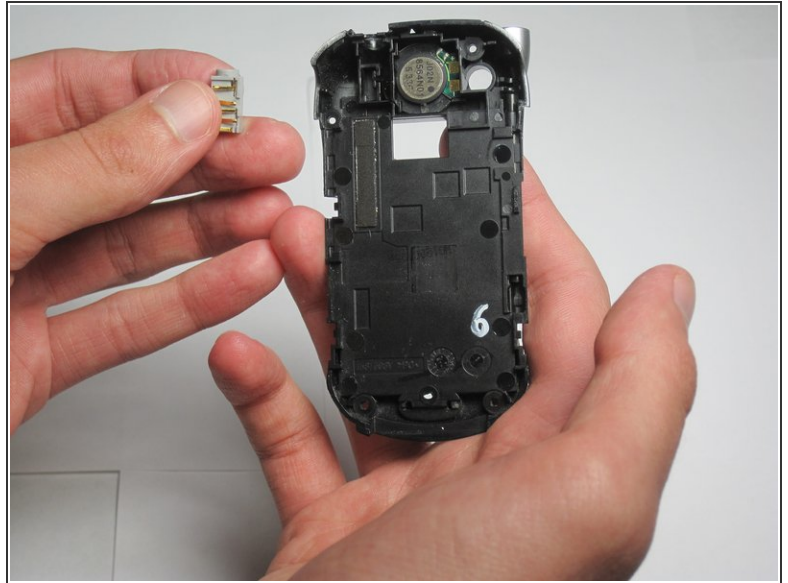
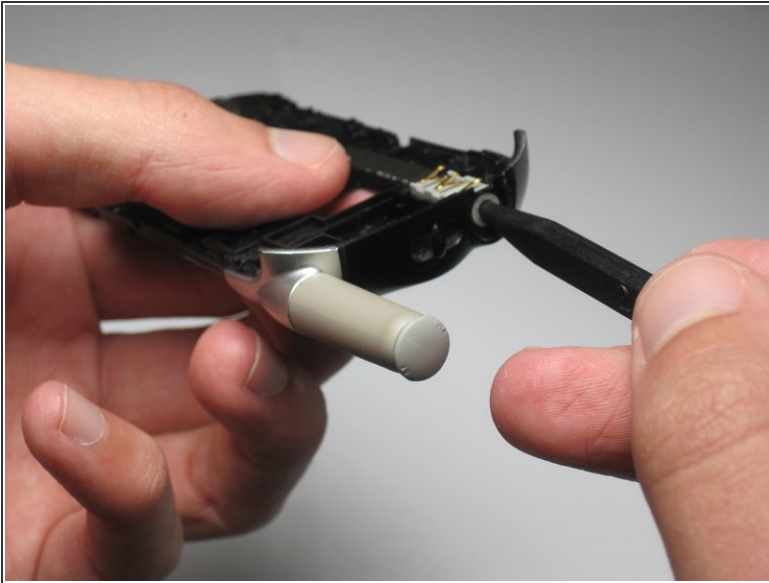


- Using your hands, pull up on the back plate while pulling on the 3 side tabs to remove the back plate.



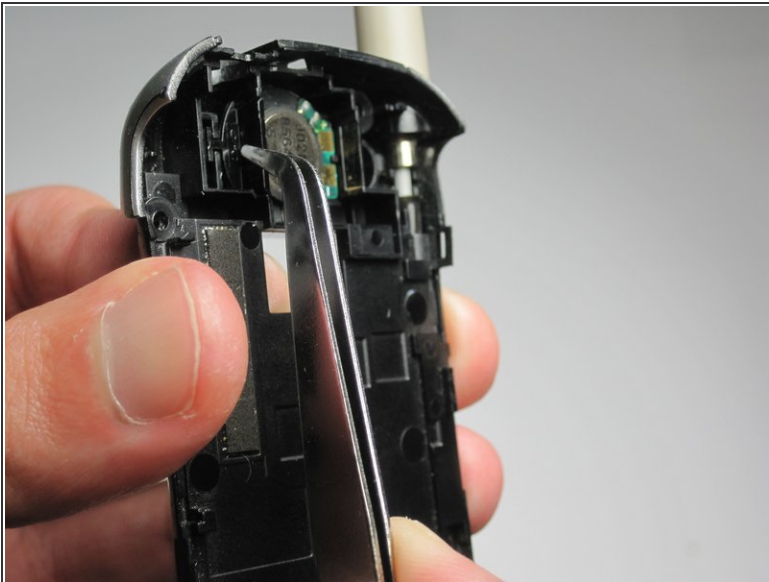
Be careful when removing the back plate; don't put too much stress on the back plate or the plastic may snap

Step 7



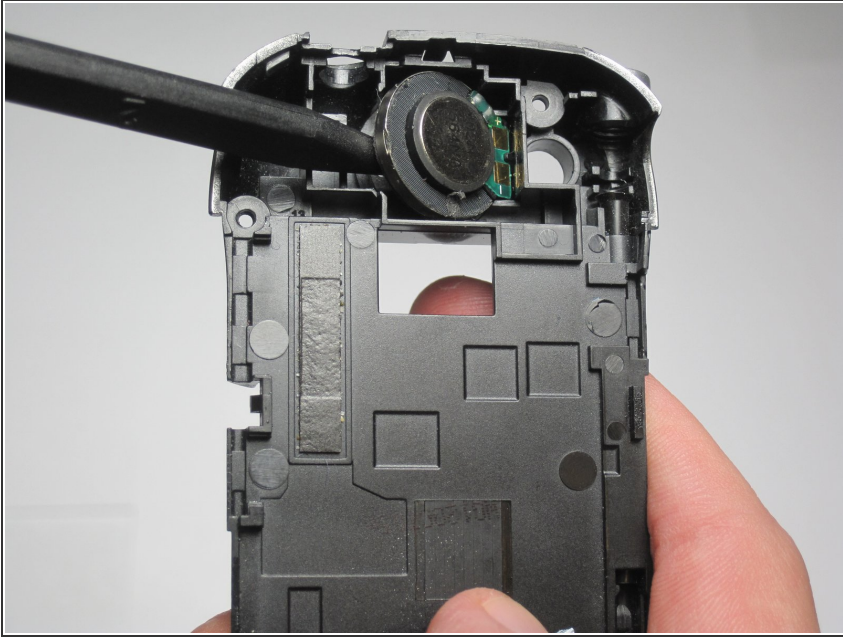
- On the back casing, using a spudger, push into the headphone jack at an upward angle to pop it out

Step 8



- Using tweezers or your hands, pick out the semicircular plastic border between the speaker and headphone jack

Step 9



- Using a spudger, remove the speaker

To reassemble your device, follow these instructions in reverse order.