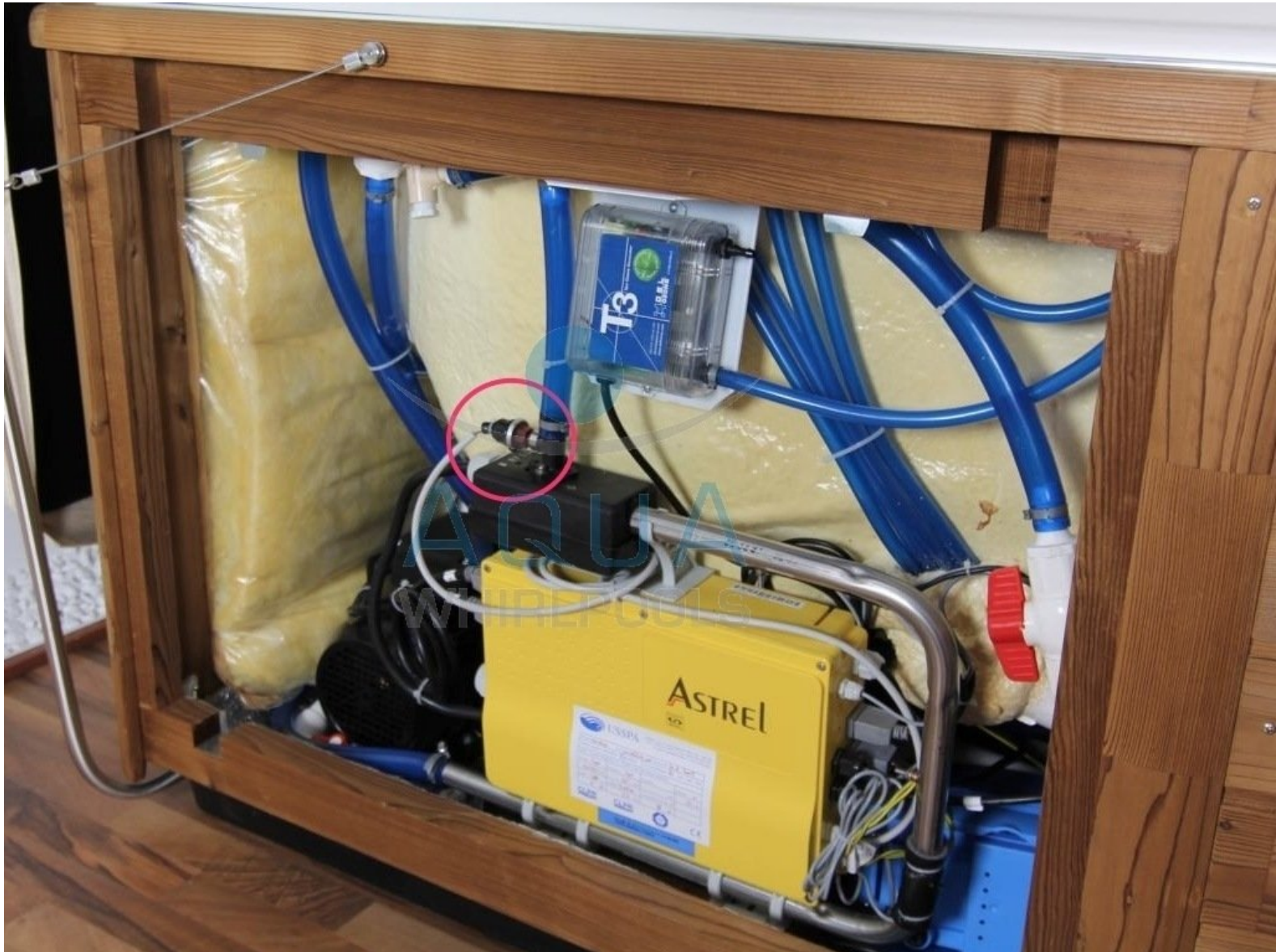




Replace Whirlpool pressure switch

Written By: AquaWhirlpools



INTRODUCTION

Manufacturer Whirlpool: USSPA, model Taurus and others.

Change Gecko pressure switch



TOOLS:

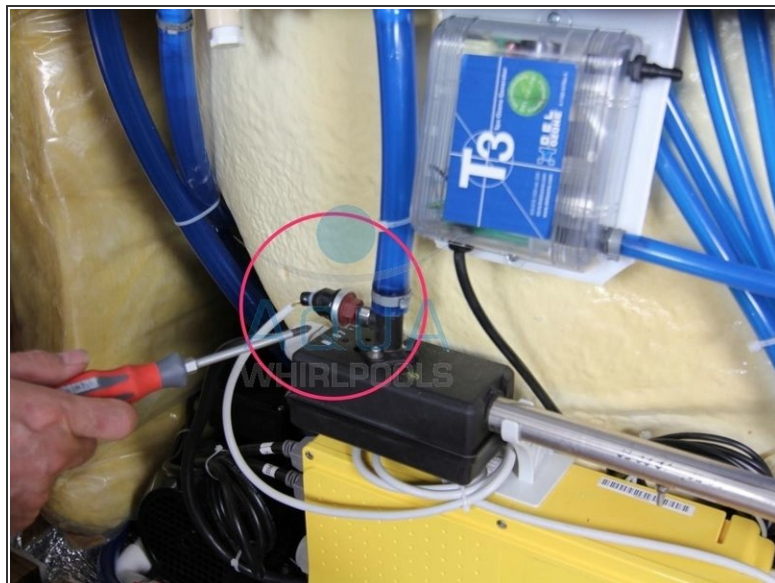
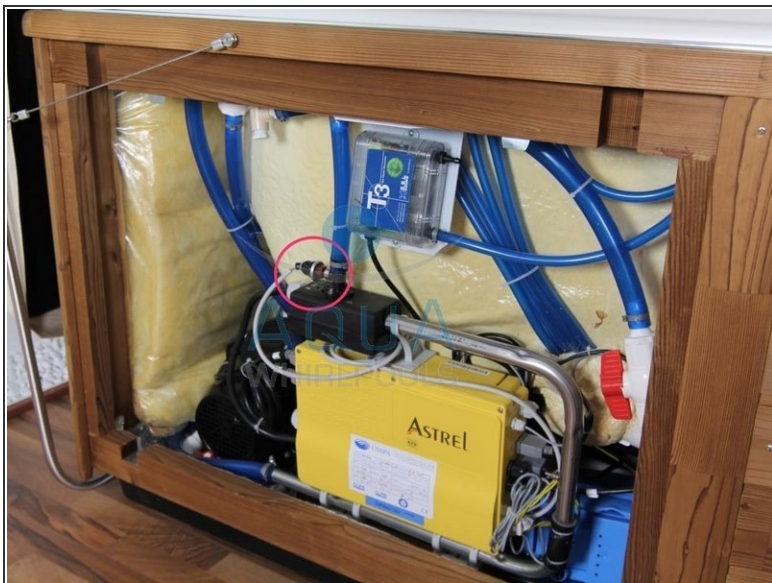
- [Kreuzschlitz-Schraubenzieher](#) (1)
- [Zange Seitenschneider](#) (1)
- [Maulschlüssel](#) (1)



PARTS:

- [Druckschalter Gecko](#) (1)

Step 1 — Gecko pressure switch



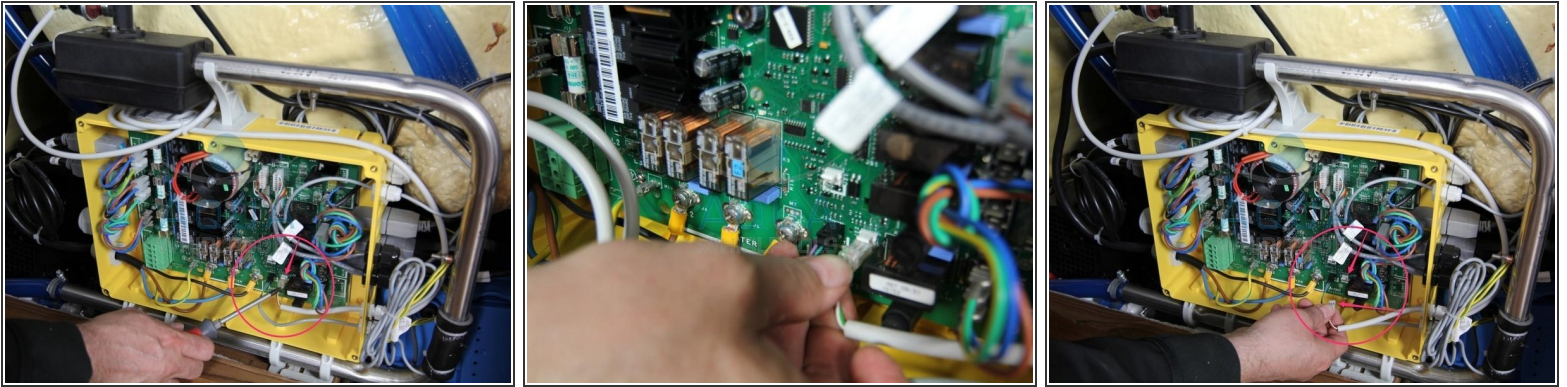
- Locate the pressure valve

Step 2



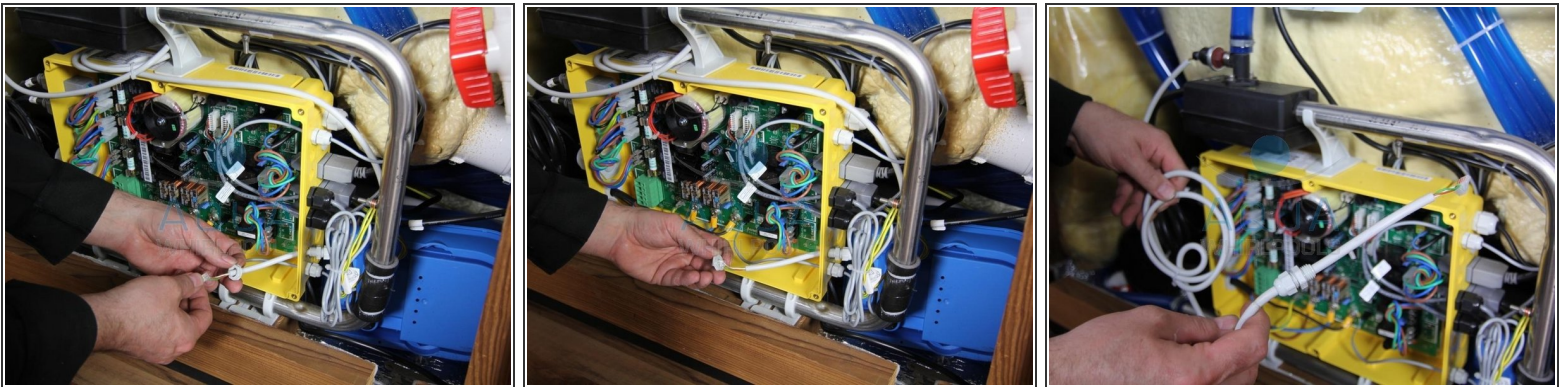
- Use a Phillips screwdriver to loosen the screw
- open the lid

Step 3



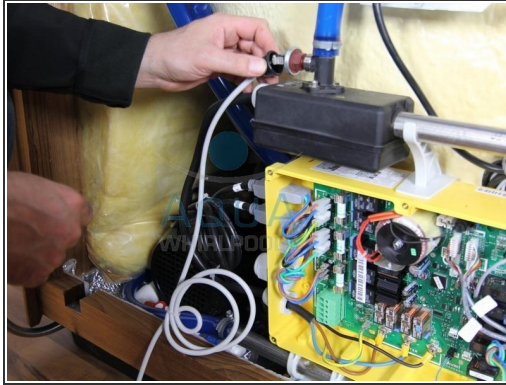
- Disconnect the plug from the pressure switch

Step 4



- Route the pressure switch cable out of the control box

Step 5



- Cut off the cable ties
- Peel off the rubber
- Pull off the electrical contacts
 - It doesn't matter which way around the contacts are reconnected during assembly

Step 6



- Unscrew the pressure switch with an open-end wrench
- Check whether there is any dirt in the openings of the pressure switch and the holder. If necessary, remove the dirt.

Follow these steps in reverse order to reassemble your device