



PlayStation 3 Super Slim Teardown - Video tutorial

PlayStation 3 super slim - how to fully...

Written By: ZFix



disassembling

INTRODUCTION

PlayStation 3 super slim - how to fully disassemble.

[video: http://www.youtube.com/watch?v=PADgRIE1kso&feature=youtu.be&ab_channel=ZFix]

You can see also: [PlayStation 3 Super Slim Teardown](#)

TOOLS:

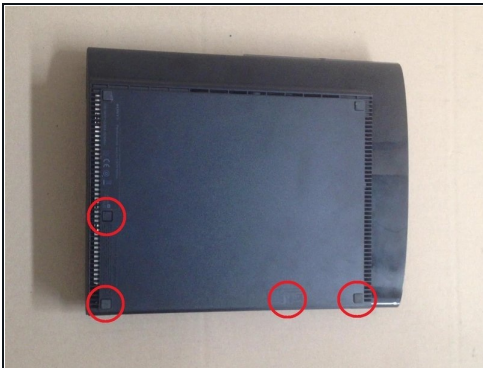
[TR8 Torx Security Screwdriver](#) (1)

[Phillips #1 Screwdriver](#) (1)

[Phillips #00 Screwdriver](#) (1)

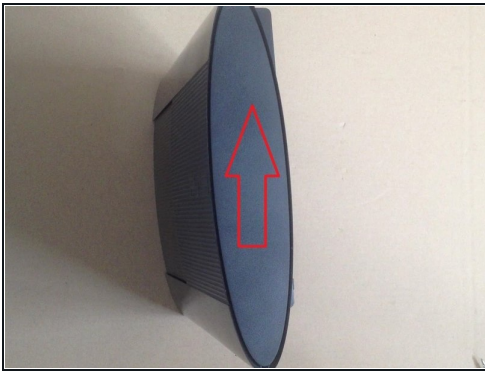
[iFixit Opening Tool](#) (1)

Step 1 — PlayStation 3 Super Slim Teardown - Video tutorial



- Remove the three rubber feet, warranty sticker and four screws.
- Gently pull up on the bottom cover to remove it.

Step 2



- Slide the HDD cover toward the rear of the device to remove it.
- Remove the blue screw shown to remove the HDD caddy with a #1 Phillips.
- Remove the 3 chassis screws with a TR8 Bit.

Step 3



- Use a metal spudger to push the tab on the rear top finisher, and lift up to remove it.

Step 4



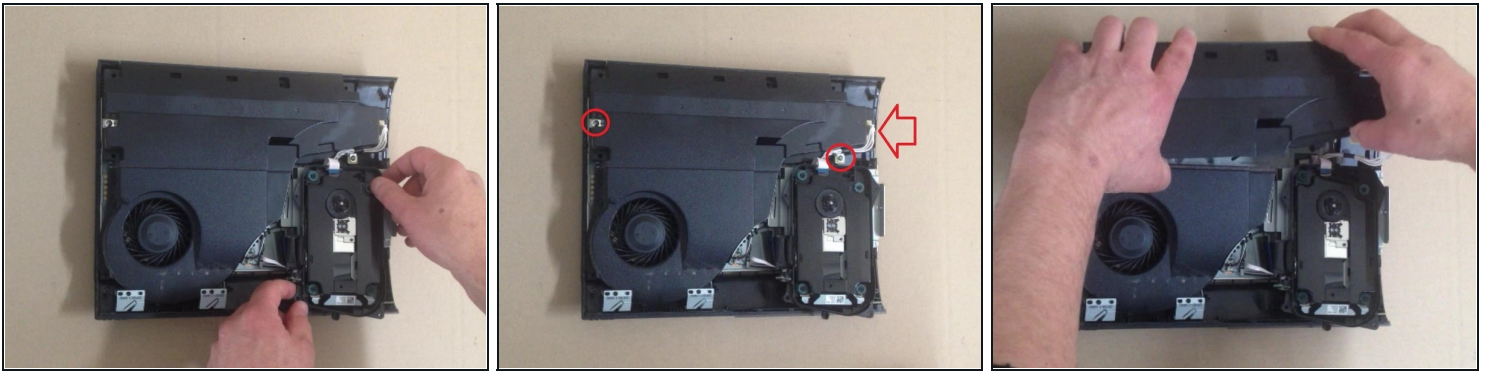
- Repeat step 3 for the front top finisher.

Step 5



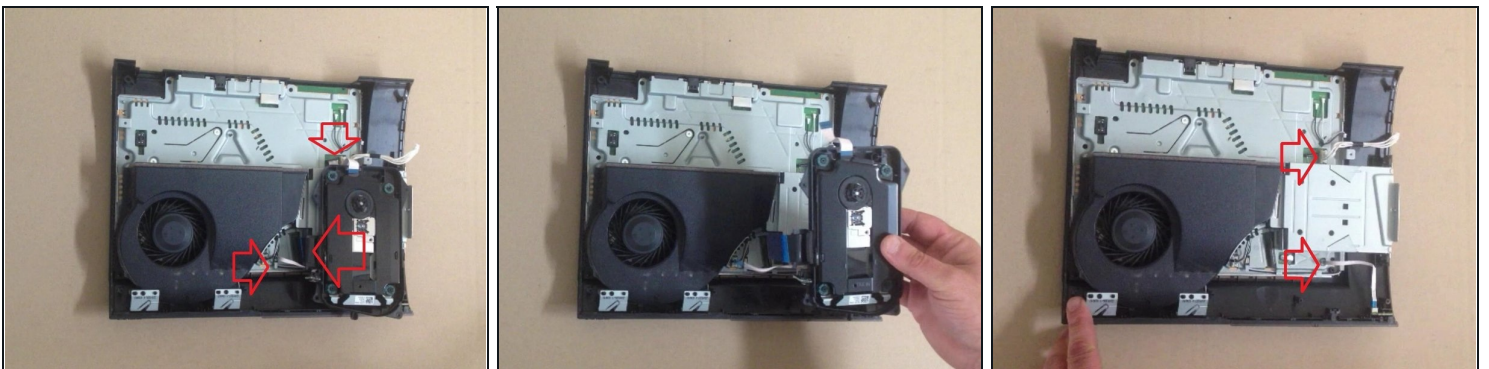
- Remove the two TR8 screws indicated in the disk reader.
- Remove the five Phillips #1 screws shown around the edge of the top cover.
- Lift the top cover up to remove it.

Step 6



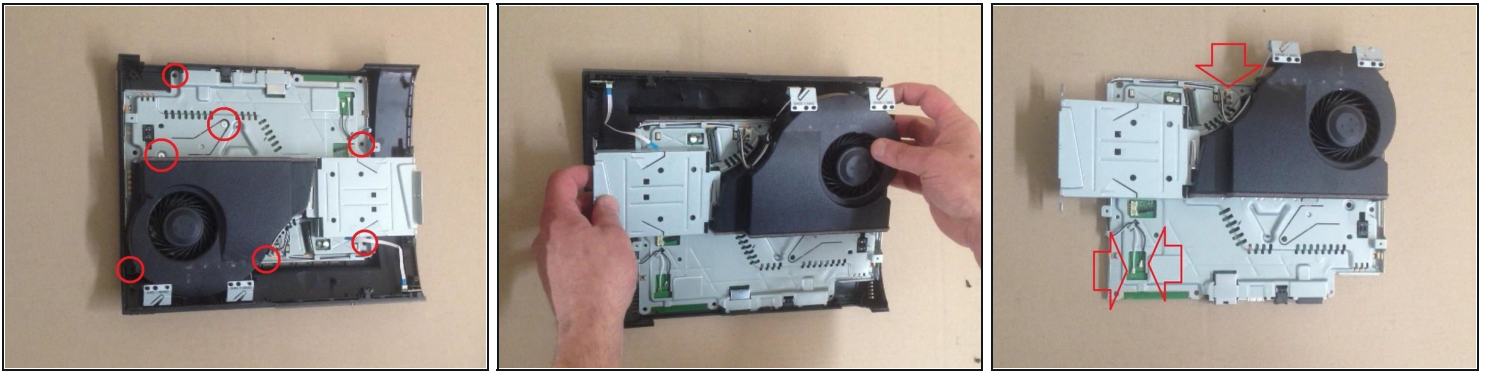
- Move the optical disk reader assembly to the left to expose one of the screws holding the power supply in.
- Remove the two Phillip #1 screws indicated and carefully disconnect the cable on the right side of the power supply.
- Lift the power supply straight up to remove it.
 - ⓘ The left side has a board connector underneath, so there will be some resistance when lifting.

Step 7



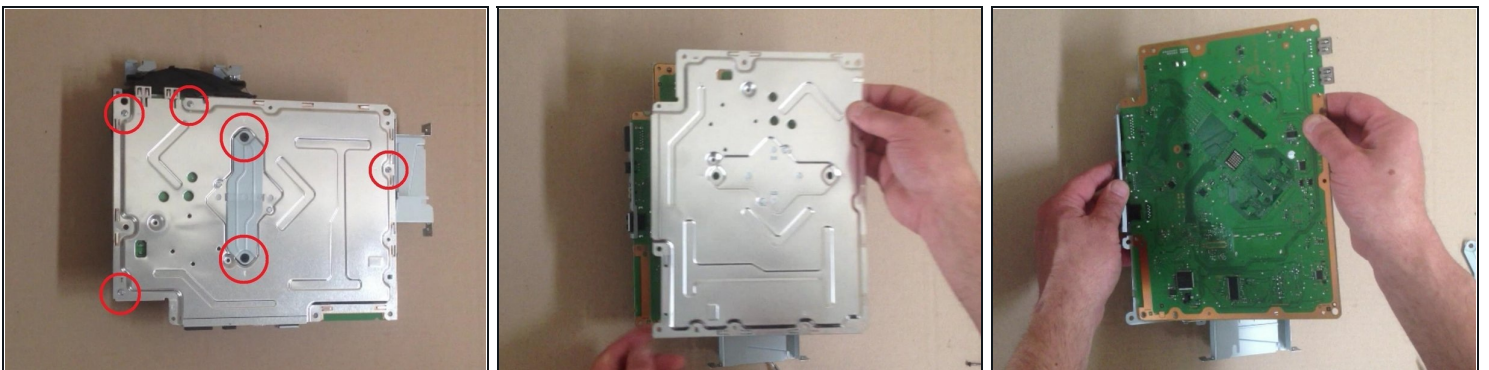
- Carefully disconnect the ribbon cables indicated.
- Lift the optical disk reader up to remove it.
- Disconnect and remove the white cable and ribbon cable indicated.

Step 8



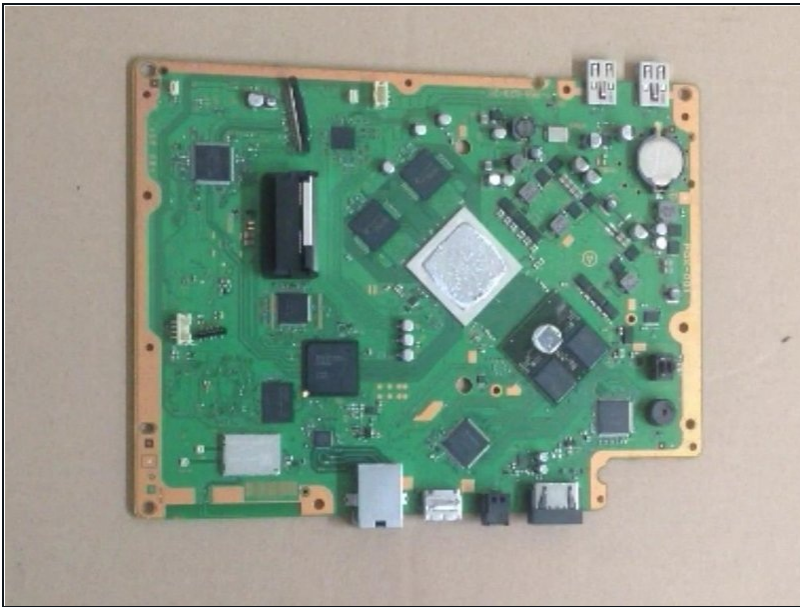
- Remove the seven Phillips #1 screws indicated.
- Lift the motherboard assembly up out of the lower half of the case to remove it.
- Carefully disconnect the Wi-Fi antenna cables and fan connector indicated by red arrows.

Step 9



- Remove the six Phillip #1 screws indicated to separate the heatsink and shield from the motherboard.

Step 10



- Congrats!

To reassemble your device, follow these instructions in reverse order.