



Samsung Brightside LCD Replacement

Relatively straight forward task, no surprises and fairly simple.

Written By: oldturkey03



INTRODUCTION

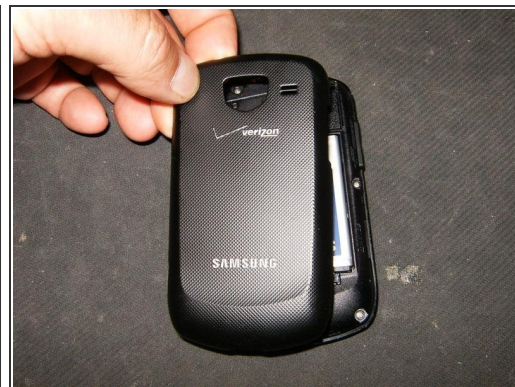
I noticed that there was not to much information about working on this phone. I received one in a non-working condition and figured it would be a good chance for some guides. The phone is easy to work on and no hidden screws or clips, no excessive glue. A straight forward no nonsense phone.



TOOLS:

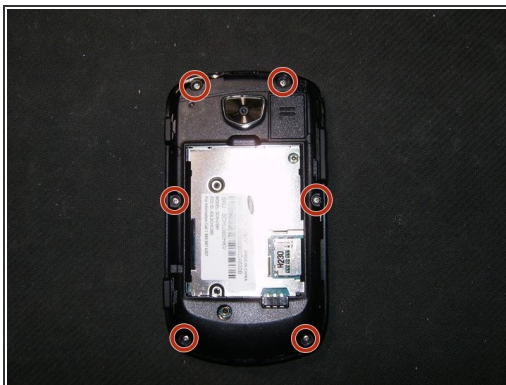
- [Phillips #000 Screwdriver](#) (1)
 - [iFixit Opening Tools](#) (1)
-

Step 1 — LCD



- Here is the Samsung SCH-U380 Brightside.
- Turn it over to gain access to the battery.
- Remove the backcover by simply pulling it off the phone from the top down

Step 2



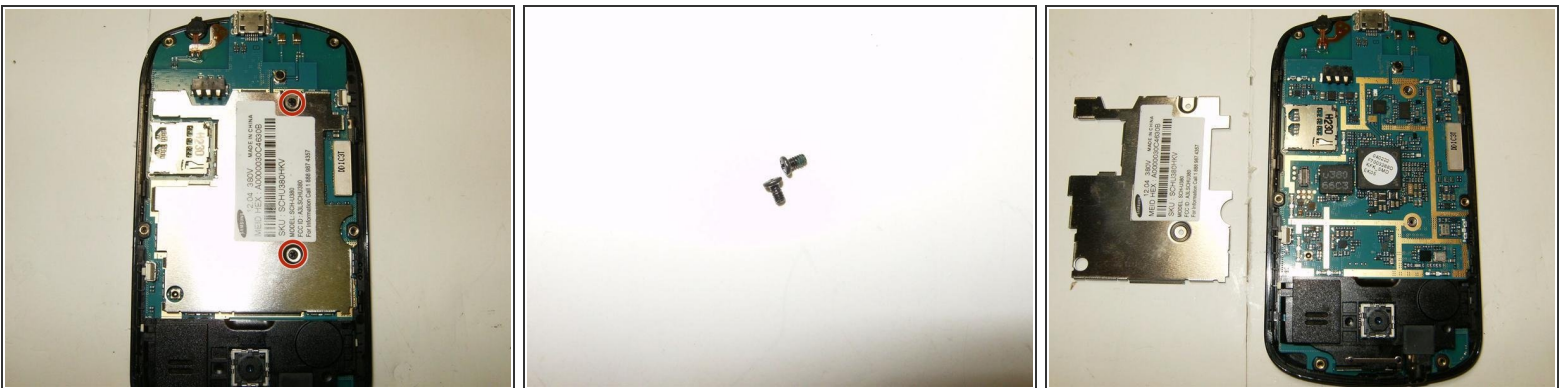
- Remove the battery
- Remove the six Phillips screws from the back frame
- All six screws are identical M1.5X3

Step 3



- Use a plastic opening tool or similar tool to separate the top from the bottom frame. Applying slight pressure in a downwards direction will disengage the plastic clips
- Continue to slide the tool along the slot until you feel the plastic locks disengage
- Once all locks have released, the bottom frame can simply be removed.

Step 4



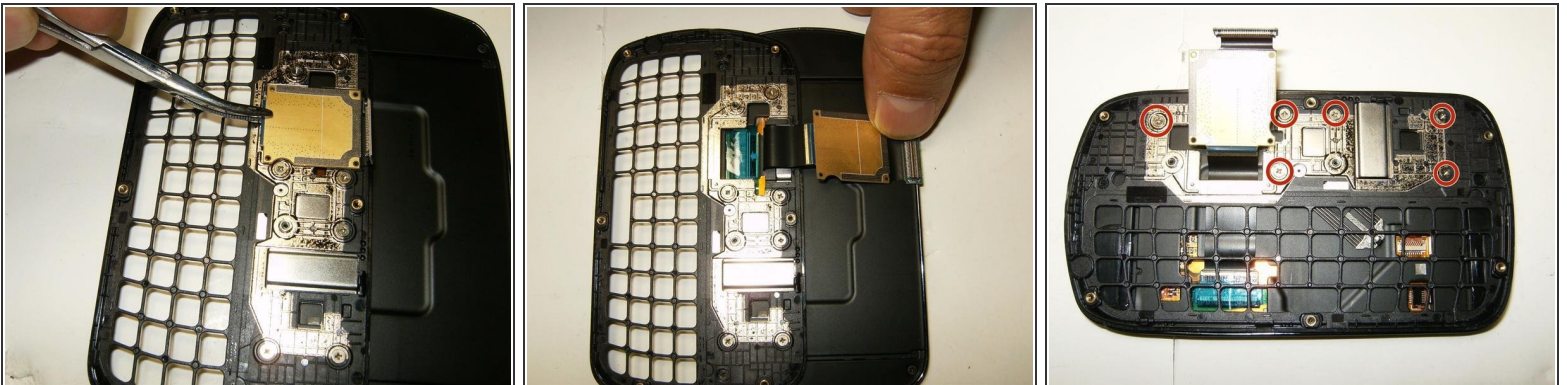
- Remove the two Phillips screws from the EMI shield.
- Both screws are identical M1.5X2
- Remove the EMI shield

Step 5



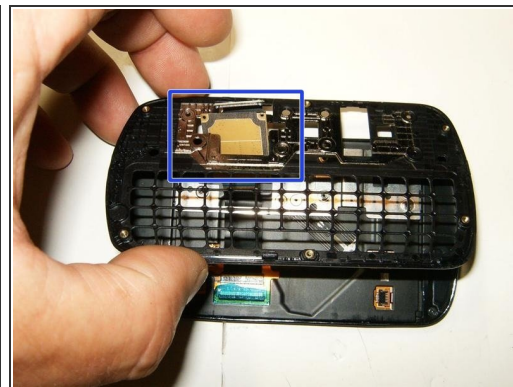
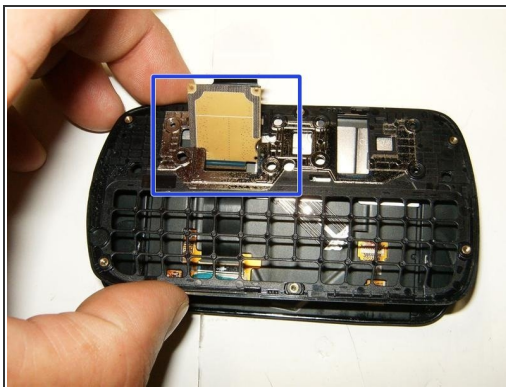
- Detach the LCD connector.
- Remove the logic board
- Slide the front case assembly to the side, remove the keyboard membrane simply by lifting it out.

Step 6



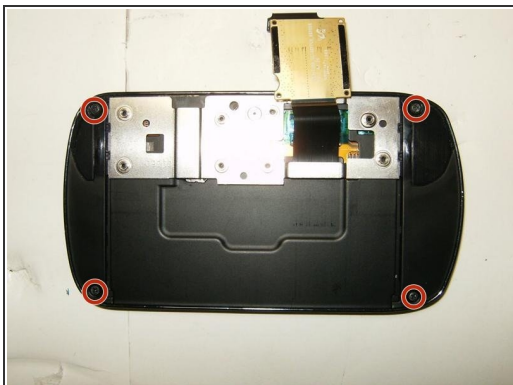
- Remove the flex cable from the assembly. It is adhered with some rubber cement and may require a bit of pull
- move the flex to the side
- Remove the six Phillips screws from the assembly

Step 7



- All six screws are M1x1
- The assembly is now loose and can be gently lifted up.
- Carefully guide the flex cable through the assembly. It only fits one way.

Step 8



- Remove the four Phillips screws from the slider case
- All four screws are identical M1x2
- Here are all screws removed.

Step 9



- Insert a plastic opening tool, or similar, to separate the sliding assembly from the case
- Guide the opening tool all the way around the slider. This will release the clips that hold it in place.
- With the clips released, the sliding mechanism can be lifted up, careful to not rip the flex

Step 10



- Guide the flex through the sliding mechanism while lifting it up
- Remove the Kapton tape
- Release the connector for the flex by simply opening it upward.

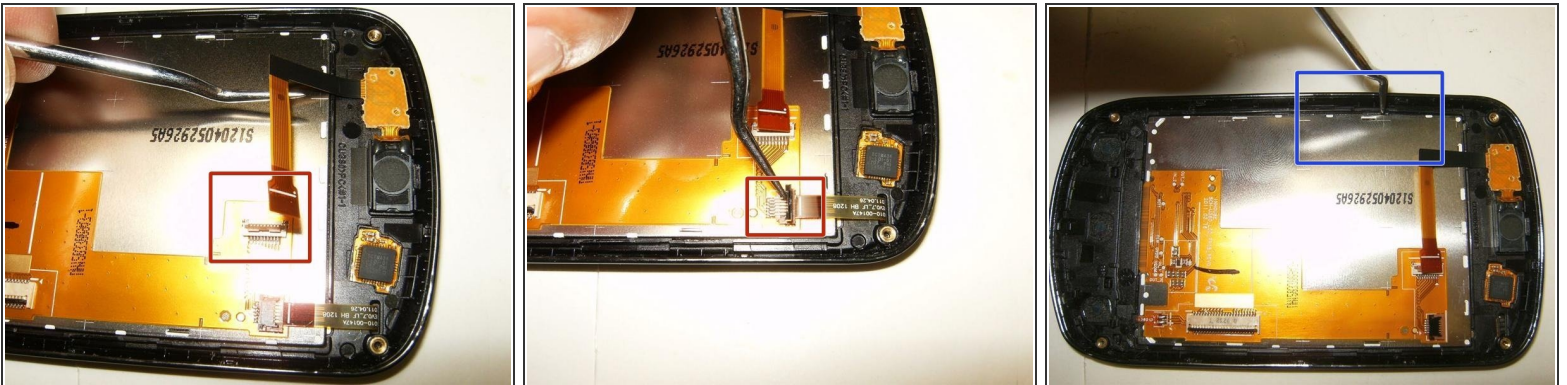
⚠ This is an L-shaped flex and requires two connectors to be released.

Step 11



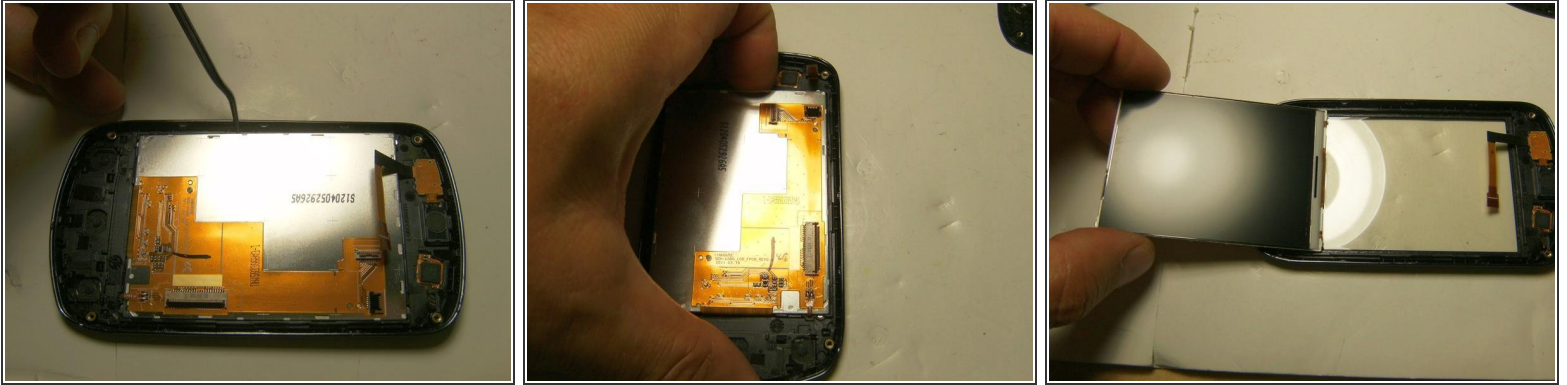
- Release the L-shaped flex from the button bar as well
- Remove the flex cable
- Removing the button bar is not necessary, but it will be loose and will fall out anyway.

Step 12



- Remove the proximity sensor/front speaker flex
- Remove the digitizer flex
- The LCD is glued to the front case. Use a pick or similar to release the LCD.

Step 13



- Move the pick, or similar all the way around the LCD to release the adhesive. A gentle prying may be necessary.
- Once the adhesive is loosened, use your fingernails, or similar, to remove the LCD from the case.
- Fold the LCD to the bottom of the frame.

Step 14



- Here is the LCD removed. LCD and Digitizer are separate piece which makes the a economical feasible repair.

To reassemble your device, follow these instructions in reverse order.