



# Magellan RoadMate 1200 Speaker Replacement

Written By: Ross Light



---

## INTRODUCTION

The speaker can be easily removed from the back cover.



### TOOLS:

- [Phillips #00 Screwdriver](#) (1)
-

## Step 1 — Back Cover



- Remove the four rubber caps from the back by using the Phillips #00 screwdriver.

## Step 2



- Remove the four screws holding the cover in place by using the Phillips #00 screwdriver.

## Step 3

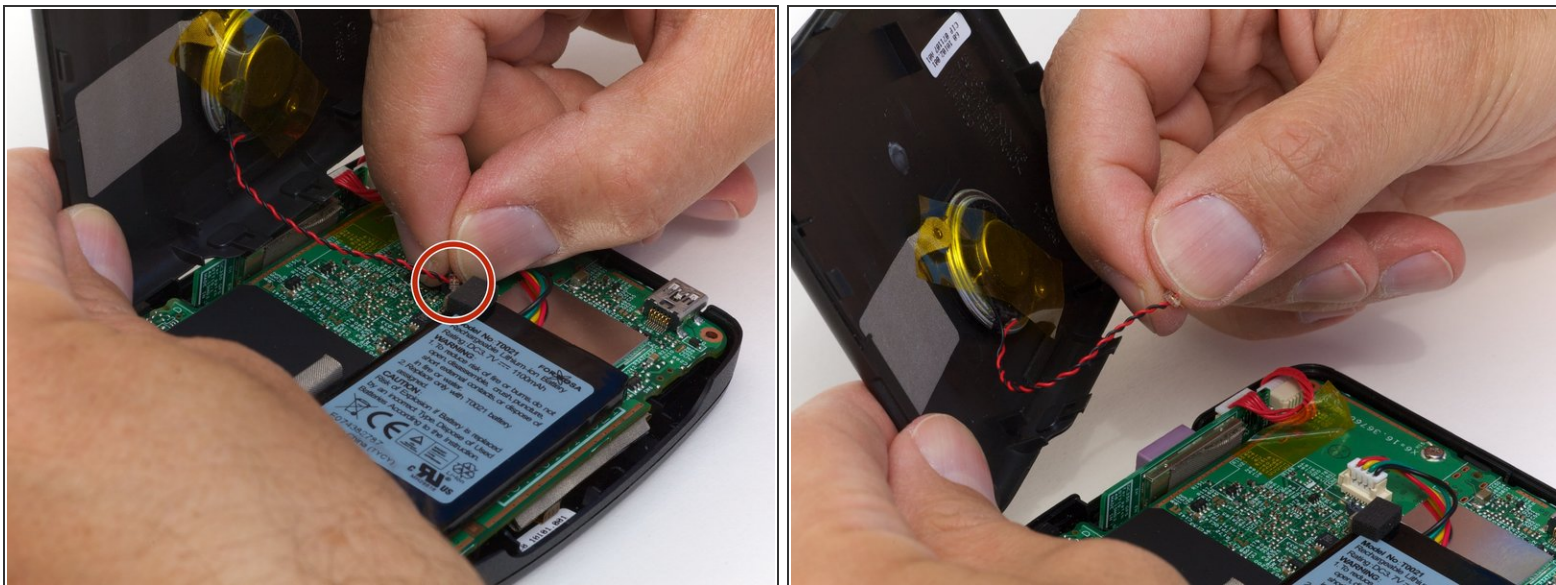


- Remove the back cover from the device by separating the back cover along its seam.

⚠ Slowly lift the cover—the speaker is screwed onto the back cover and is connected to the circuit board.



## Step 4



- Pull the speaker cord, horizontally, by its base, away from the motherboard.
- ☞ When reassembling, make sure that you plug the terminal in the same way. The black wire should be on the side farthest from the battery.

## Step 5 — Speaker



- Once you pull off the back cover, remove the orange piece of tape on the speaker.
- Use a Philips #00 screwdriver to remove the 2 screws holding the speaker to the back casing.

## Step 6



- Once the speaker has been unscrewed, remove the speaker from the back casing with your fingers.

To reassemble your device, follow these instructions in reverse order.