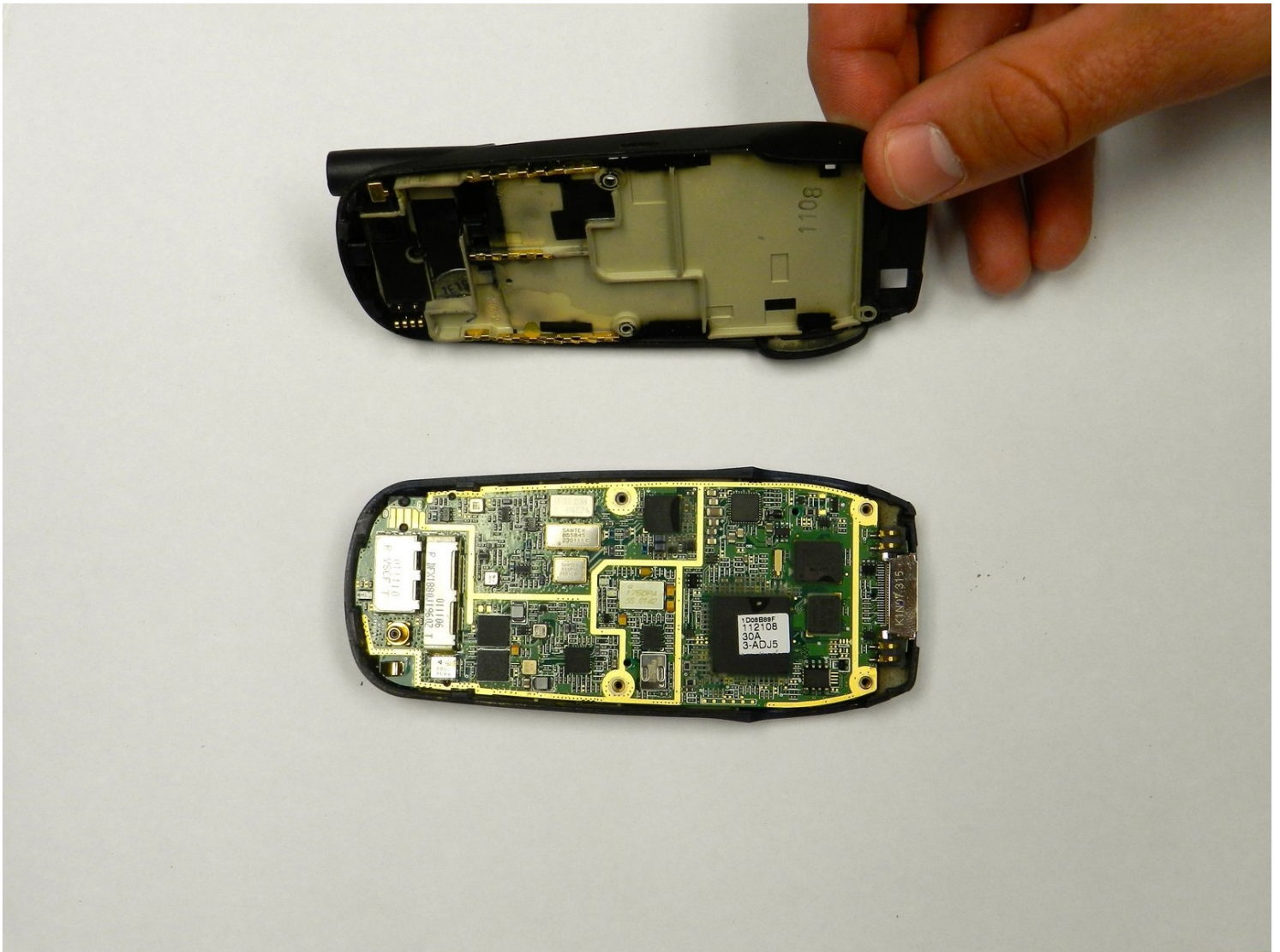




# Samsung Portable Dualband Tri-Mode External Speaker Replacement

If the speaker phone functionality is not...

Written By: Barbara



# INTRODUCTION

If the speaker phone functionality is not performing correctly, then it may be time to replace the external speaker phone. Follow this guide in order to check for damage, and, if necessary, replace the external speaker phone.

## TOOLS:

Tweezers (1)

6-in-1 Screwdriver (1)

T6 Torx Screwdriver (1)

## Step 1 — Battery



- Slide the battery out from the battery compartment on the back of the phone.

## Step 2 — Antenna



- Unscrew the antenna top.

## Step 3



- Clasp the antenna with [tweezers](#) and push toward the top.
- Remove the antenna.

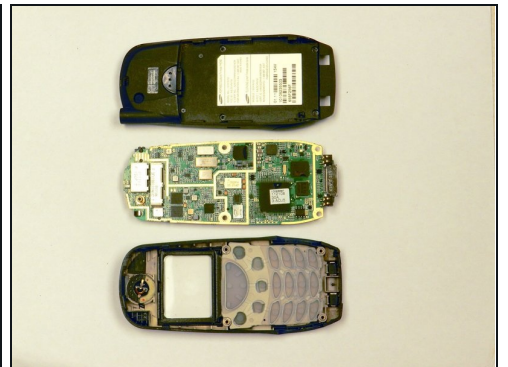
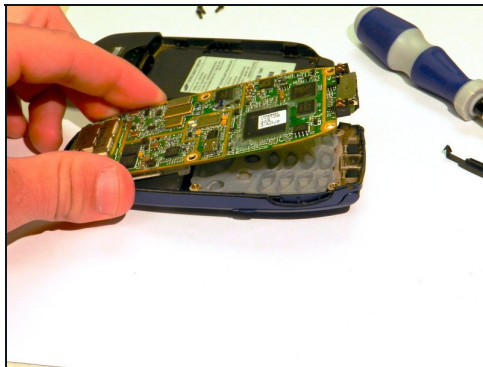
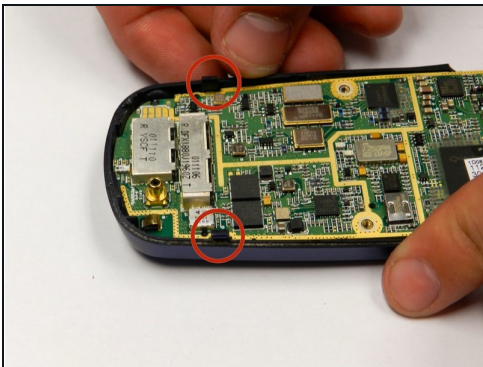


## Step 4 — Backplate



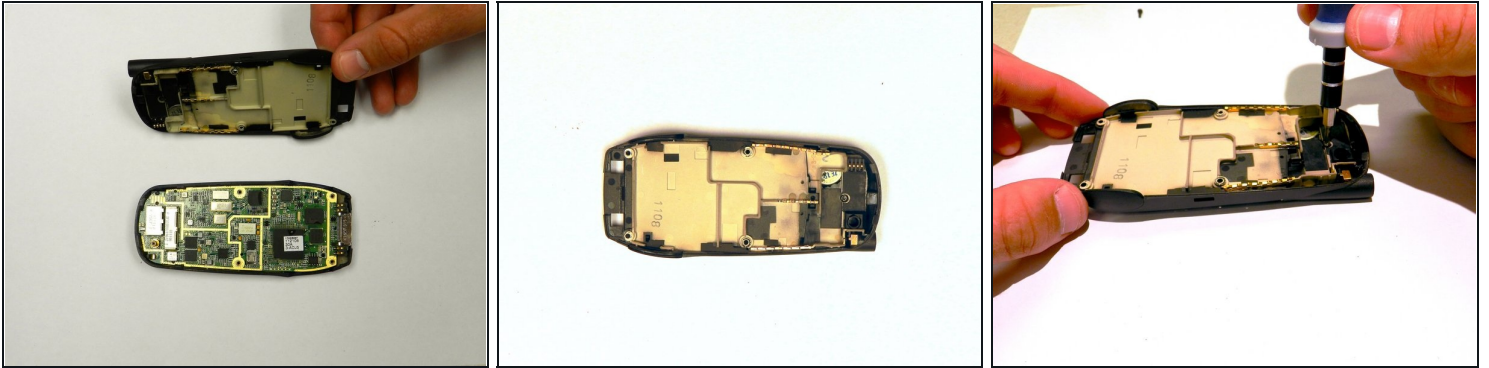
- Remove the four screws (3 mm) from the battery compartment.
- Press the release buttons located on the side of the phone while gently prying the back plate off.

## Step 5 — Motherboard



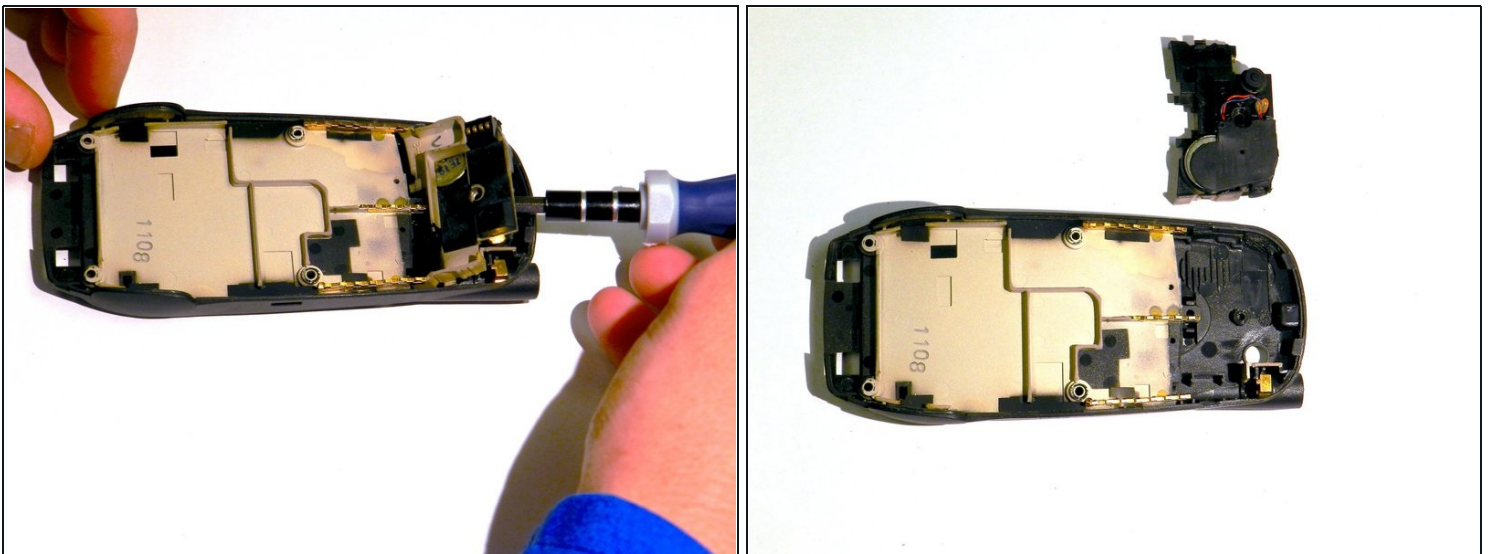
- Press the release tabs on the sides of the back casing.
- Gently pry the motherboard loose and remove it.

## Step 6 — External Speaker



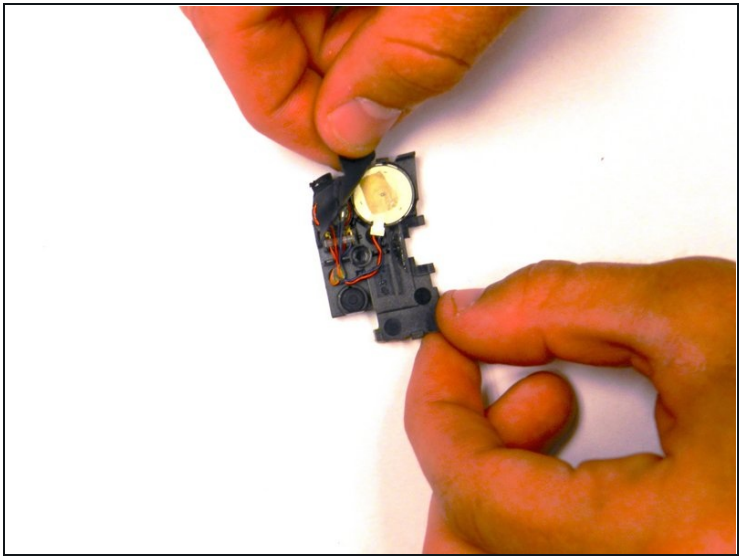
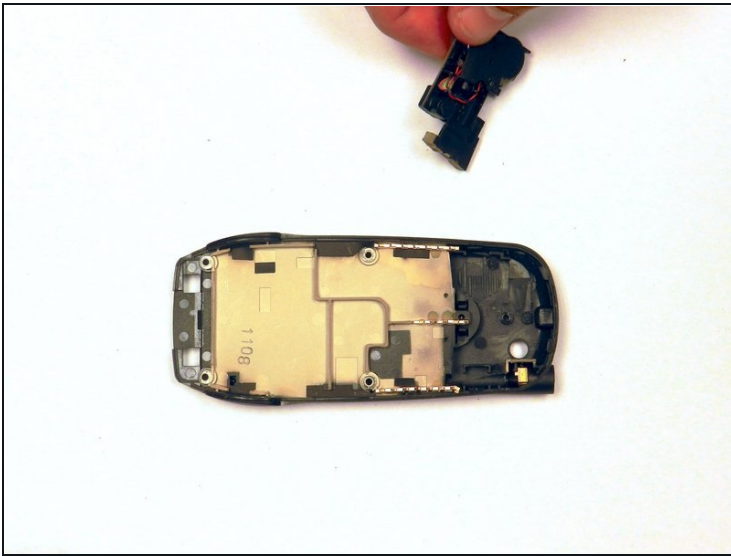
- Locate the back plate of the phone. Turn the back plate over to view the inside.
- Remove the 2 mm screw from the top of the inner back casing of the phone.

## Step 7



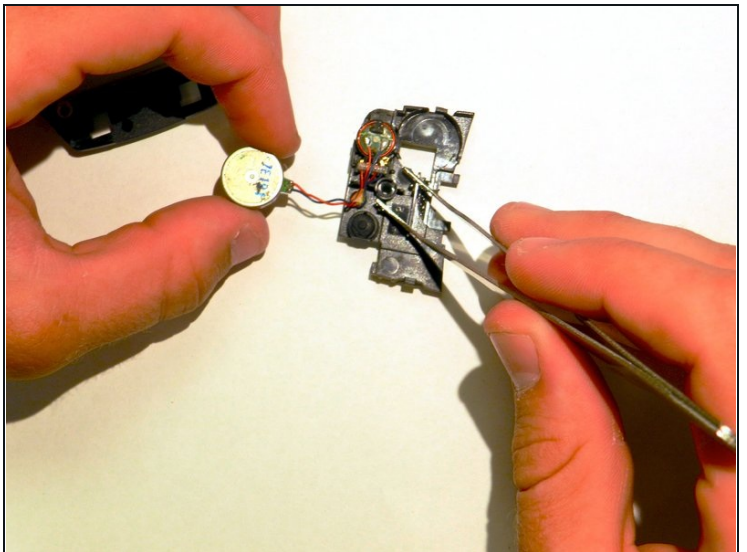
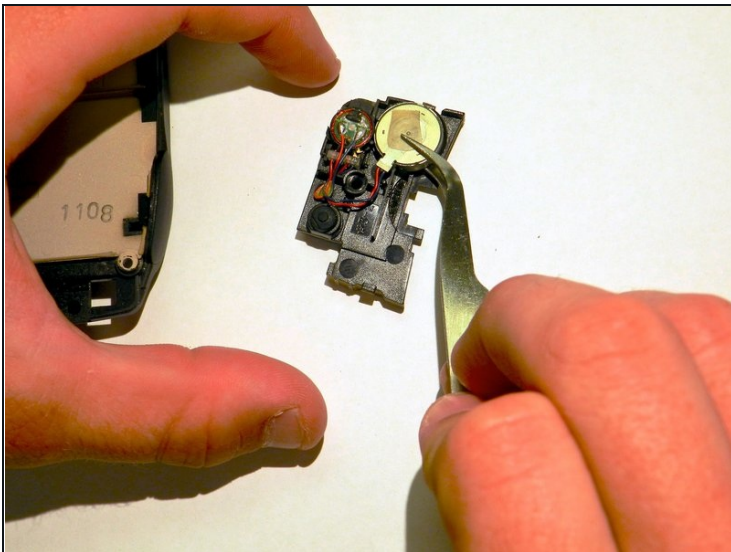
- With the flat head screwdriver, remove the external speaker unit.

## Step 8



- Take the external speaker unit and turn it over.
- Remove the black rubber casing.

## Step 9



- Use [tweezers](#) to remove the external speaker from the small unit.

To reassemble your device, follow these instructions in reverse order.