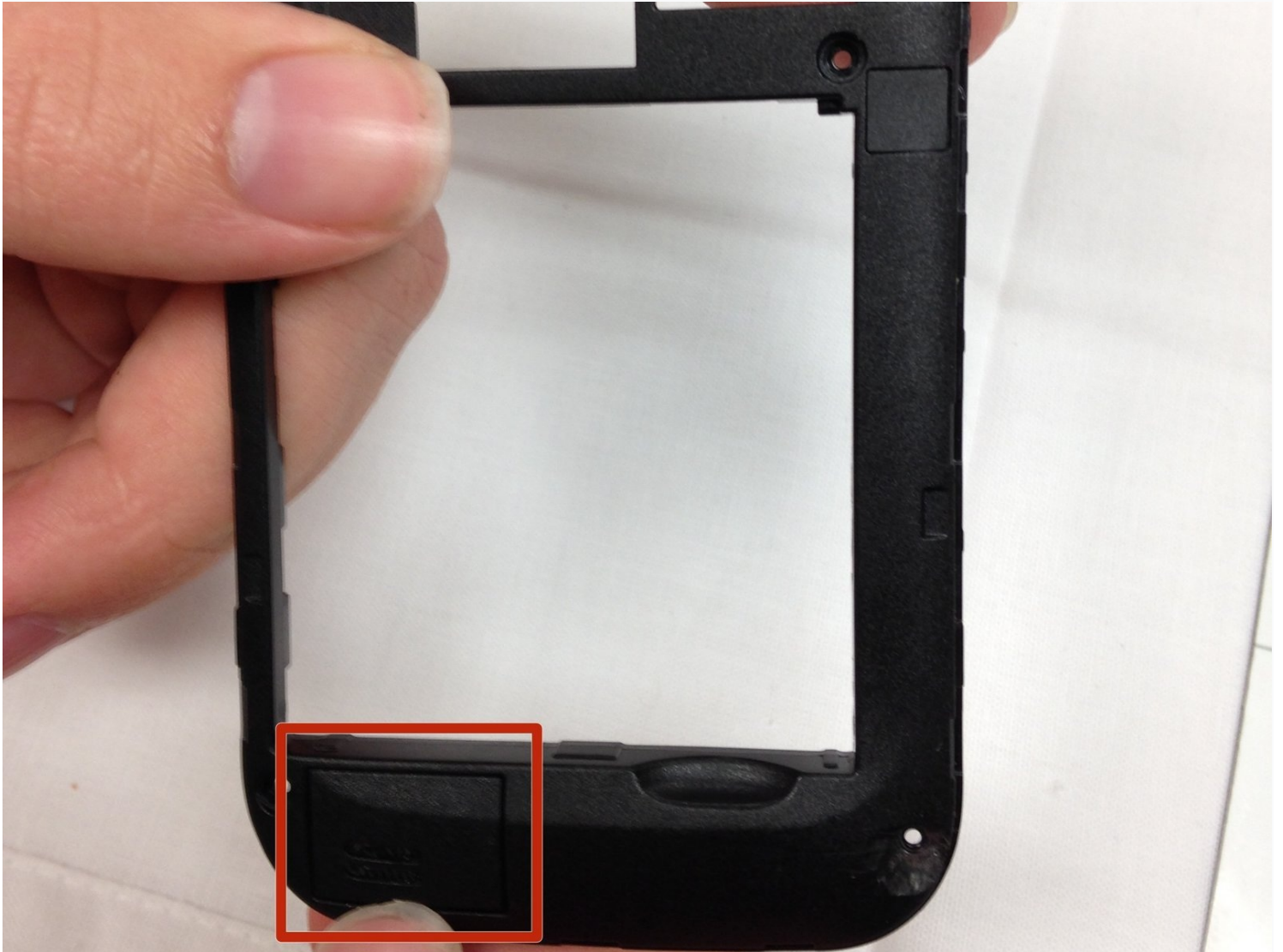




Samsung Galaxy S II T989 Speaker Replacement

The speaker located on the back of the phone is...

Written By: Joshua King



INTRODUCTION

The speaker located on the back of the phone is a larger speaker that is housed in the protective inner plate. This speaker is used when no headphones are plugged in for media and the speakerphone function.

TOOLS:

Phillips #0 Screwdriver (1)

Anti-Static Wrist Strap (1)

iFixit Opening Picks (Set of 6) (1)

Step 1 — Rear Cover



- To remove the rear cover, locate the tab indicated by the red outline.
- Using your fingernail, gently pry the rear cover.

Step 2 — Inner Plate



- The inner plate is held on by six screws that are 1/16 of an inch (1.6 mm).
- Remove the screws with a Philips head precision screwdriver.
- Place all screws somewhere that they will not easily be lost, such as a [magnetic mat](#) or a plastic bag.

Step 3



⚠ When removing the inner plate, place device on grounded surface or use anti static wrist band.

- After the screws have been removed, the only thing holding the inner plate in is several plastic tabs built into the frame of the phone.
- Firmly pinch the edge, as shown in the picture, and pull the plate away from the frame.
- If you cannot get a grip on the inner plate, consider using the spudger to pry and lift the plate out.

Step 4 — Speaker



- The speaker is located in the area located by the red rectangle.
 - To remove the speaker hold the frame with one hand then push the speaker out with the other.
- ⚠ It may take a large amount of force so be careful to hold the frame to prevent it from breaking.
-

To reassemble your device, follow these instructions in reverse order.