



Disassembling Logitech M305 Wireless mouse

Written By: Darren



🔧 **TOOLS:**

Phillips #00 Screwdriver (1)

Spudger (1)

Step 1 — Disassembling Logitech M305 Wireless mouse



- M305 Wireless mouse

Step 2



- Turn mouse over to reveal the battery cover removal button.

Step 3



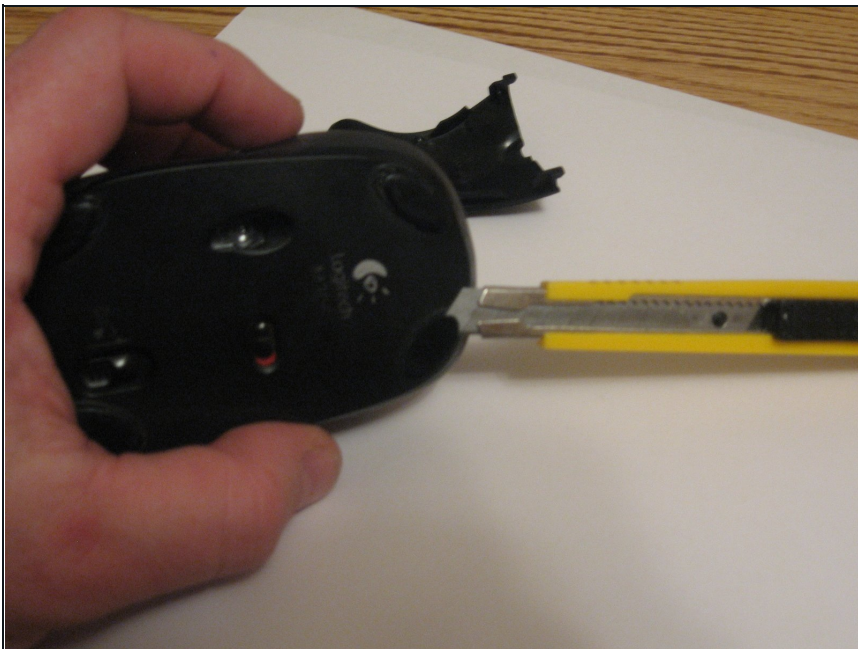
- Slide the button back and then release in over to remove battery cover on the top of mouse.

Step 4



- Remove small top access screw.

Step 5



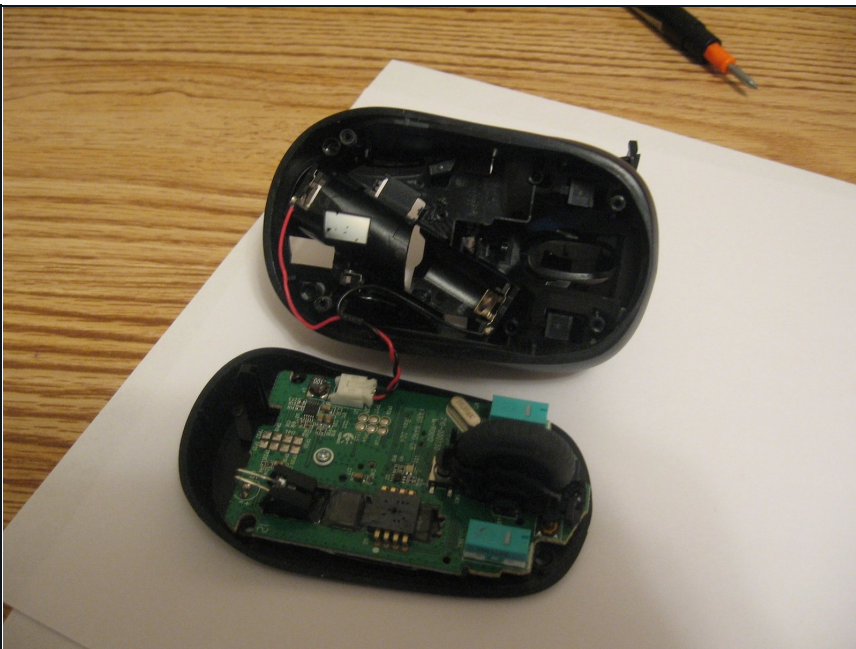
- Remove (gently) sticky pads with the spudger or a sharp knife/cutter.

Step 6



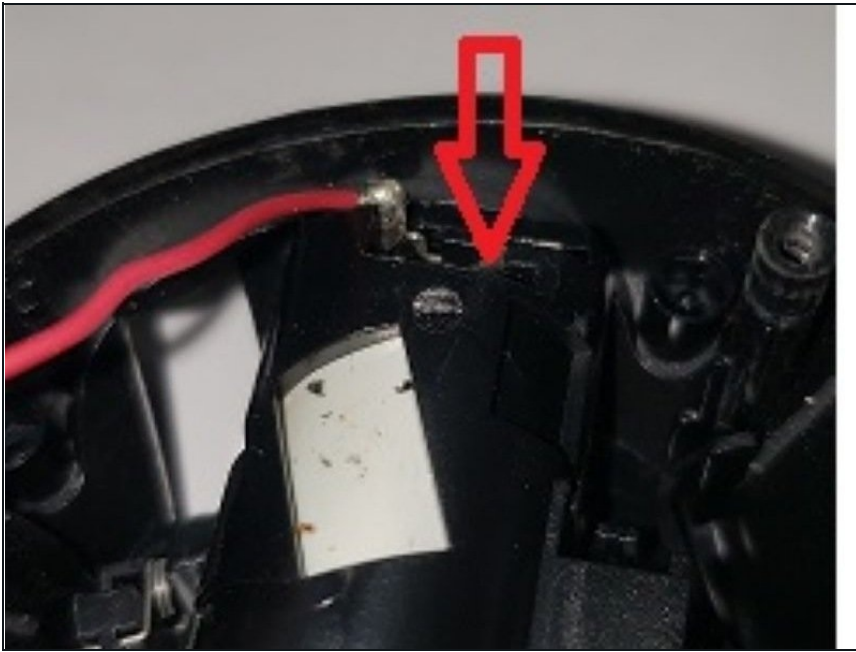
- After removing all four sticky pads, unscrew the four screws. One screw for each hole.

Step 7



- Once screws are removed, the top comes off, but be careful not to pull too hard because of the attached wires.

Step 8



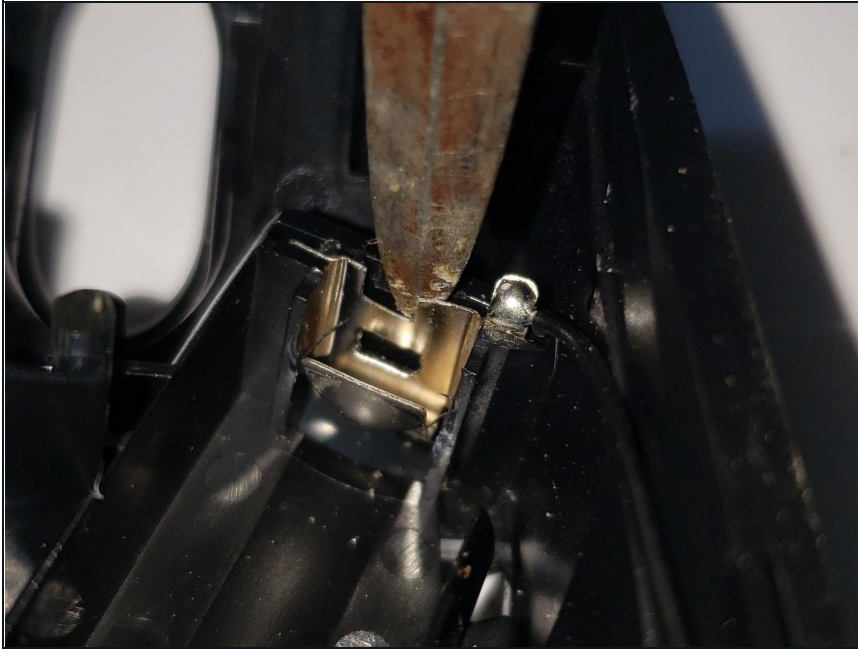
- Battery Contact on the rear of mouse. There is a black plastic tab that holds the battery contact. The red arrow is pointing to it. Look at image #10 (last image) and use the same instructions with this battery contact and black plastic tab as with the other battery contact.

Step 9



- Battery contact on front of mouse (while the mouse cover is upside down). The red arrow is pointing to the black plastic tab holding the battery contact.

Step 10



- Tool is being used to pry the battery contact away from the black plastic tab. (please excuse the rough looking tool i used). Once the contact is pried away then take a pair of needle nose pliers and pull the battery contact straight up. You may have to wiggle the pliers some as you pull up.

To reassemble your device, follow these instructions in reverse order.