



HP PSC 2355 Button Panel Replacement

This replacement guide demonstrates how to replace the button panel on the HP PSC 2355.

Written By: Patricia



INTRODUCTION

A defective button pad is is not difficult to replace with just a couple tools.



TOOLS:

- [Spudger](#) (1)
 - [T9 Torx Screwdriver](#) (1)
-

Step 1 — Scanner Lid



- Grasp the scanner lid cover from the front of the device and lift lid all the way up until it stands on its own.

Step 2



- With two hands, grasp the lid on both sides near the hinges and lift straight up to release the lid from each hinge.

Step 3 — Button Panel



- Once you have removed the scanner lid, locate the finger notch on inside the top left half of the bezel (control) panel.

Step 4



- Place your index finger in the notch and lift up to unsnap the panel.
- Set panel cover aside.

Step 5



- Use a T9 torx screwdriver to remove the 0.9 cm screw.

Step 6



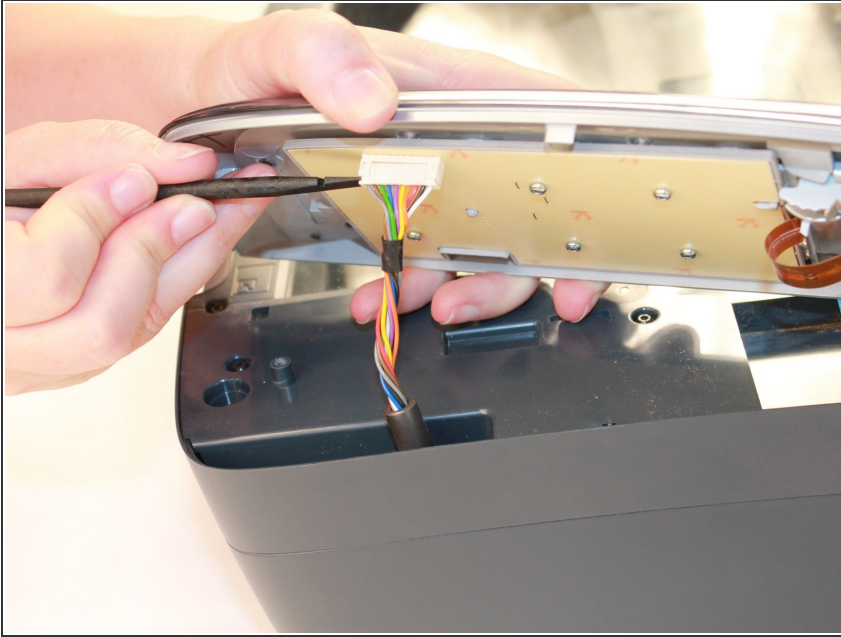
- From the front of the printer, remove the button panel by pulling it towards you while slightly lifting it up.

Step 7



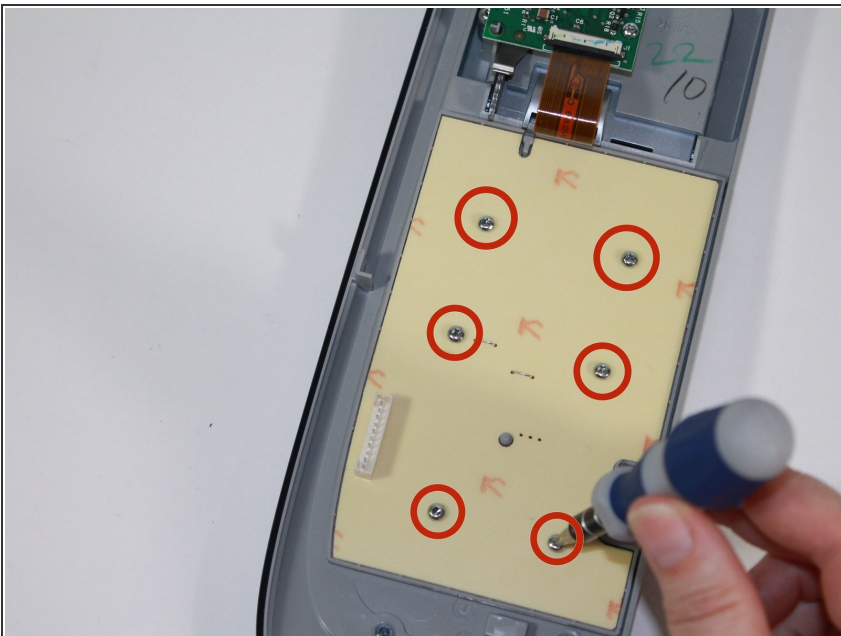
- Disconnect the white ribbon cable by grasping it between your thumb and index finger.
- Gently pull to release the ribbon from the green circuit board

Step 8



- Next, use the flat end of a spudger to pry loose the flat ribbon computer cable by the plastic connection end and carefully separate it from the prongs on the button panel.
- The entire button panel should now be completely disconnected from the printer.

Step 9



- Lay the panel on a flat surface with the backside facing up.
- Using a T9 torx screwdriver, remove all six 0.7 cm silver screws from the off-white plastic panel.

Step 10



- Gently lift the button panel off the plastic backing with rubber button mat.

Step 11



- ⚠ Be careful not to lift out and lose the two clear plastic panel separators (these are not fastened to the panel but can easily fall out of the panel if tilted). These are two small plastic parts that sit near the top right and left portions of the panel.
- Insert your new button panel. To reassemble your printer, follow these instructions in reverse order.

To reassemble your device, follow these instructions in reverse order.