



DualShock 4 Charging Port Replacement

This guide provides a step-by-step process of...

Written By: Bijan Vakilifathi



INTRODUCTION

This guide provides a step-by-step process of how to replace a charging port in the DualShock 4 controller.

TOOLS:

Phillips #00 Screwdriver (1)
iFixit Opening Tool (1)
Essential Electronics Toolkit (1)


PARTS:

DualShock 4 Controller Charging Assembly (JDS-011) (1)
DualShock 4 Controller Charging Assembly (JDS-001) (1)

Step 1 — Controller



- Using the Phillips #00 Screwdriver, remove the four 6.0 mm screws securing the rear cover to the controller.

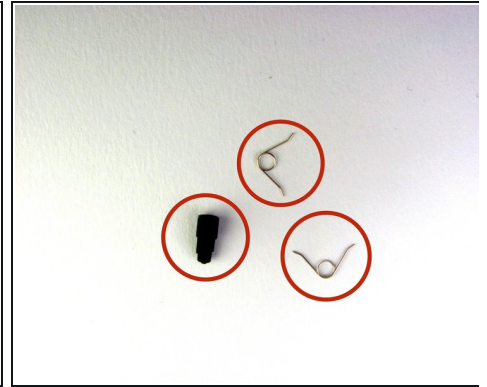
 Be careful loosening the screws, using the wrong sized screwdriver, or letting the screwdriver slip can permanently damage the screw heads, making removal extremely difficult.

Step 2



- ① Four fragile plastic clips hold the casing together. You can see their locations more clearly in [this guide](#).
- ① The clips help hold the seams together. If you break these clips, the controller will still work.
- Beginning with the **left handle**:
 - Pinch the left handle of the controller to introduce an opening.
 - Wedge a plastic opening tool into the opening and slide it up towards the joystick.
 - Pull down on tool to pry open the casing.
- Repeat these steps for the **right handle**.

Step 3



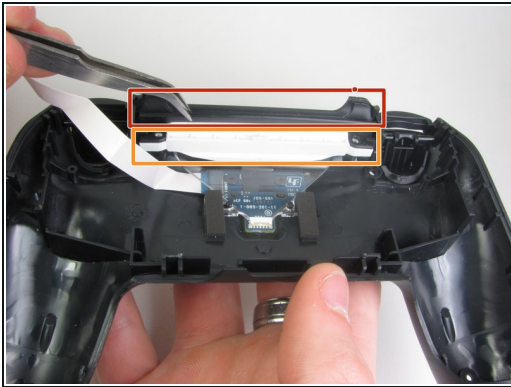
- Wedge a plastic opening tool into the case-splittings and pull down to crack open the casing near the following buttons:
 - **Share** button
 - **Options** button
- Split the plastic covers of the controller apart, taking note that they will still be attached by circuit board ribbons.
- ① Three small pieces are often released from the framework. To prevent loss, maintain a controlled work field.
 - 2 Trigger Springs
 - 1 Grey Reset Button Extension

Step 4 — Charging Port



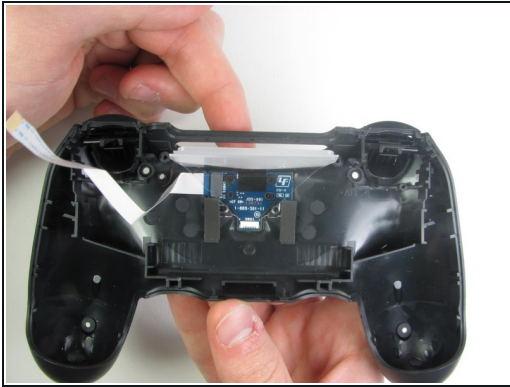
- Detach the motherboard ribbon connecting the two sides of the controller by using your fingers.
- After the two halves are separated, place the top of the controller off to the side.

Step 5



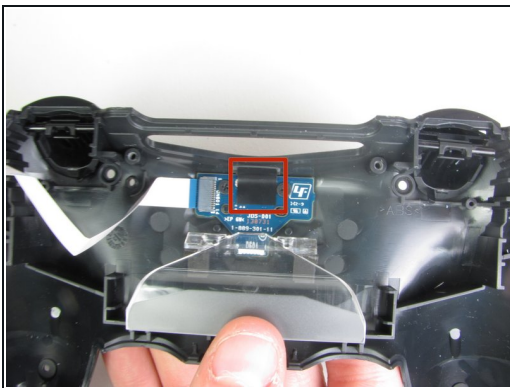
- Remove the two screws holding the sub-assembly together. Then use the blunt forceps to grab the 2 inch black plastic connector labeled in the picture with the red box.
- Use the blunt forceps to grab the 2 inch white piece of plastic labeled with the orange box.

Step 6



- With the clear piece of plastic pushed in, take the transparent white piece out from the top of the controller.
- ① Keep the clear plastic piece on the controller, but keep it pushed down to provide room for charger port replacement.
- Use the Philips #00 Screwdriver to unscrew the two 4.0 mm screws that attach the charging port to the rear cover.

Step 7



- With the blunt forceps remove the top part of the black tape connecting the charging port to the plastic portion of the controller.
- Grab the PCB of the charging port from the side and pull upwards slowly to remove from the controller.
- ⚠ Do NOT pull the blue PCB rapidly upwards; instead move the piece side to side to create some free space between the controller and PCB.

To reassemble your device, follow these instructions in reverse order.