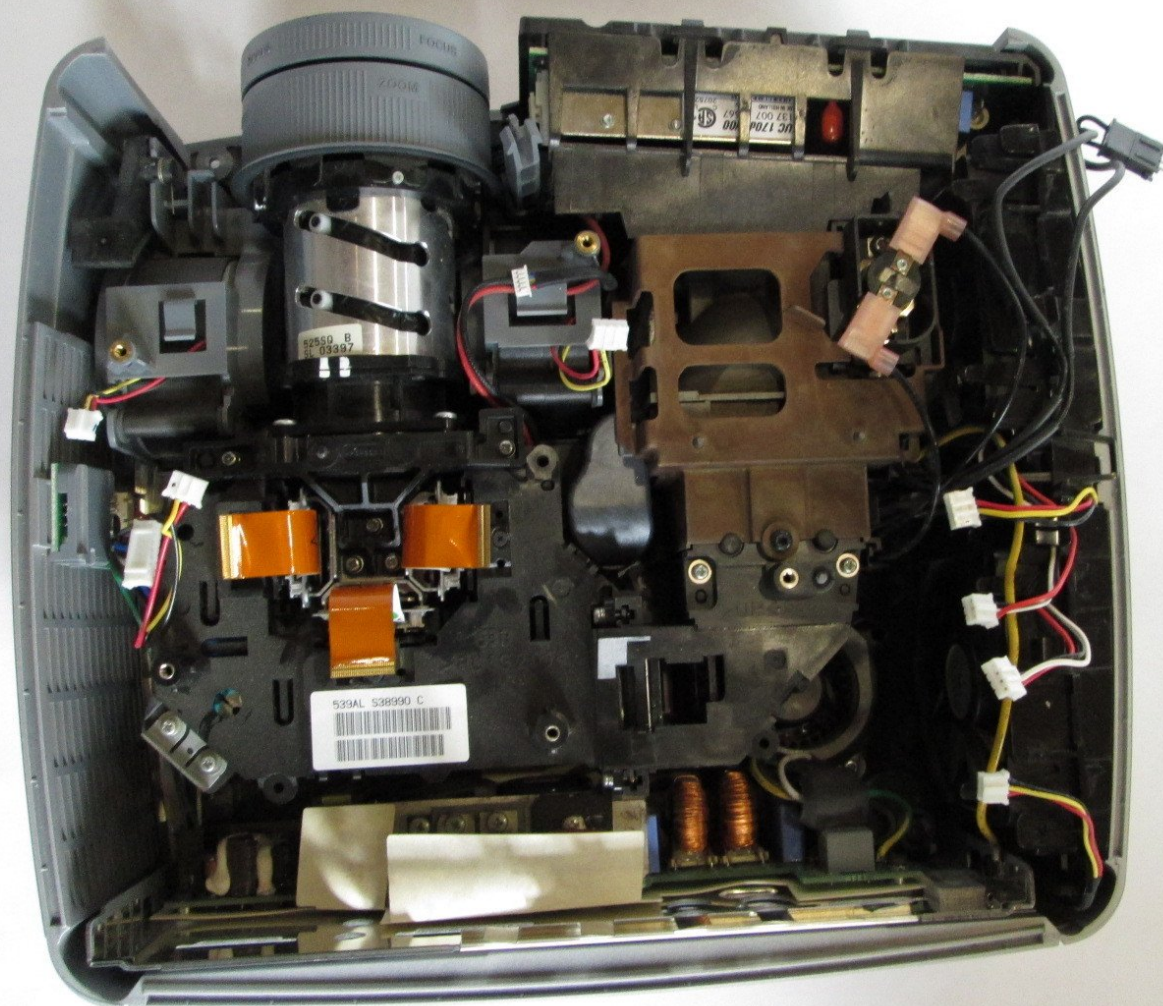




InFocus LP540 Projector Main Fans Replacement

This guide will demonstrate how to properly uninstall and replace the main fans which help keep the power supply and lamp at a cool temperature.

Written By: Jorge L Navarro





TOOLS:

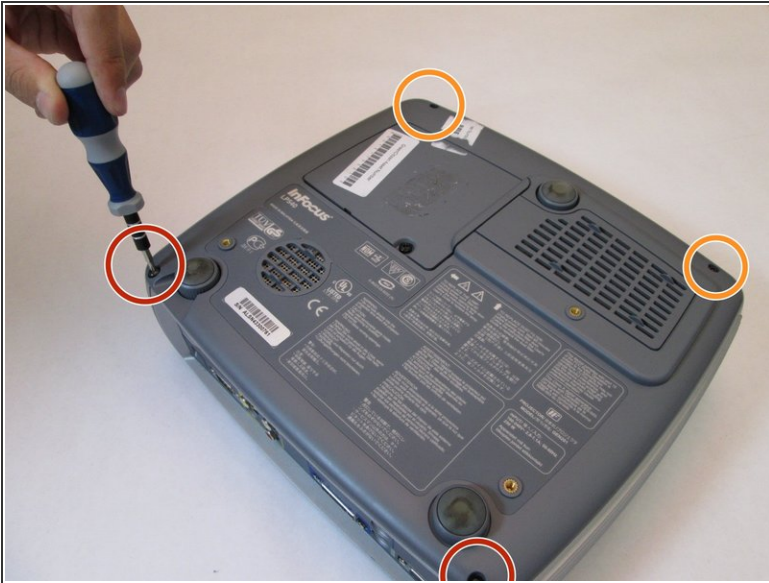
- [Phillips #0 Screwdriver](#) (1)
 - [T10 Torx Screwdriver](#) (1)
-

Step 1 — Main Board



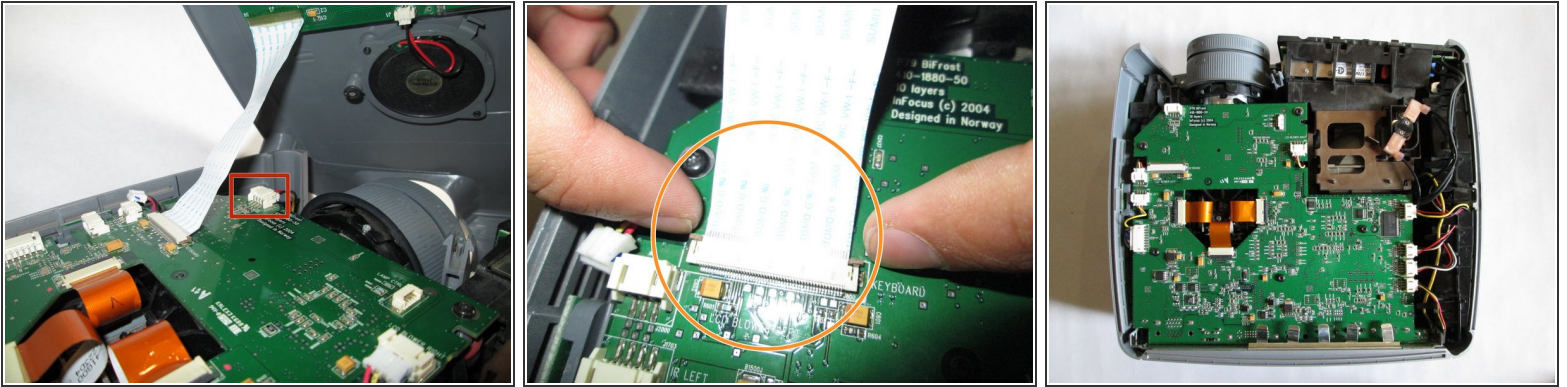
- Flip the projector right-side up and turn it so that the back ports are facing you.
- Remove the 7 mm metallic screws using the flat-head screwdriver.
- Using the T10 Torx screwdriver, remove the two black 10 mm screws located at the center of the back panel.

Step 2



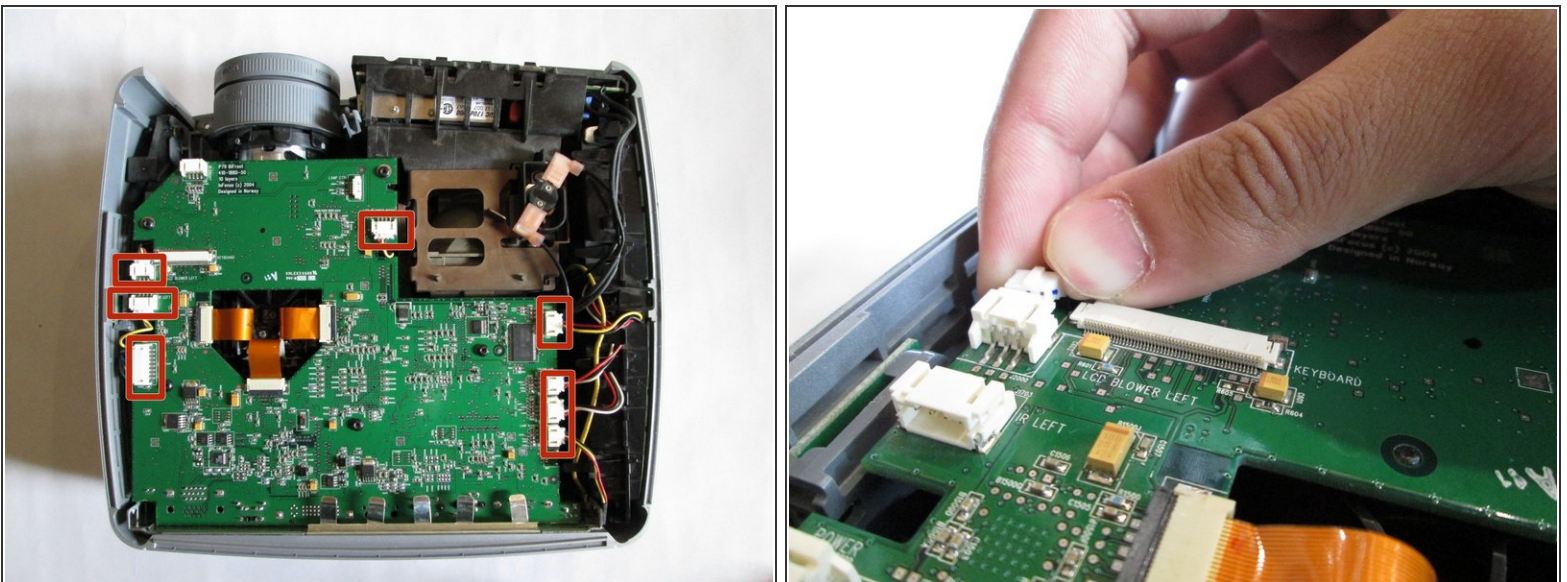
- Flip the projector over.
 - Use the T10 Torx screwdriver head to remove the two 77mm screws located nearest to the back panel ports.
 - Remove the two 10mm screws located near the lens side with the T10 Torx screwdriver head.
 - Flip the projector back over.
- ⚠ Lift up the main lid cautiously to avoid ripping the electrical ribbons.

Step 3



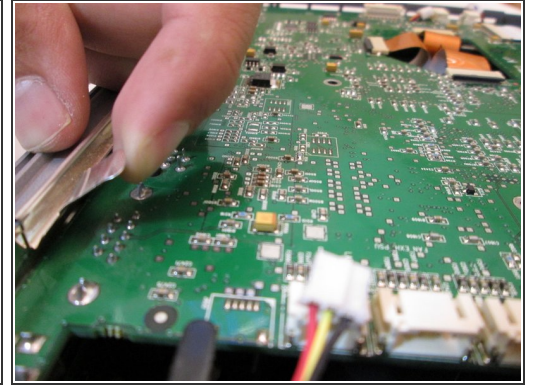
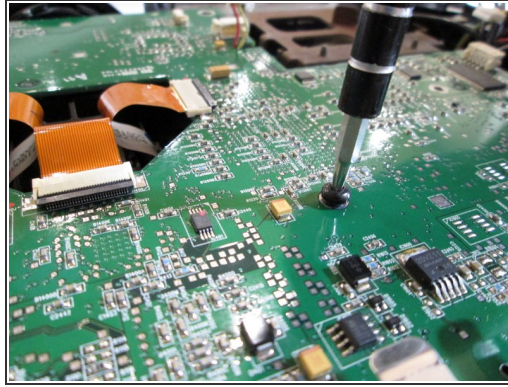
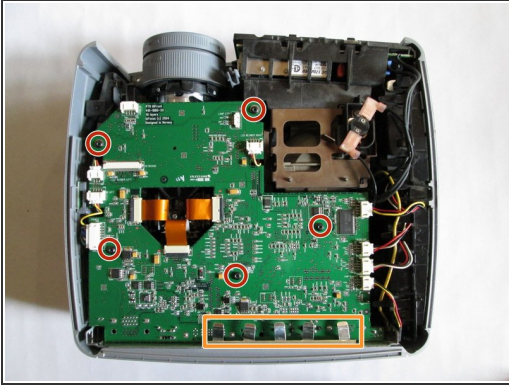
- Unplug the speaker wire from the circuit board by simultaneously squeezing the sides and pulling.
- Pull on the brown tabs located at the sides of the white plastic ribbon holder and pull the ribbon out.
- Remove the top cover.

Step 4



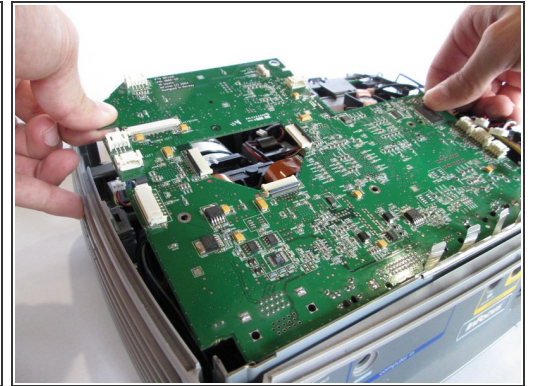
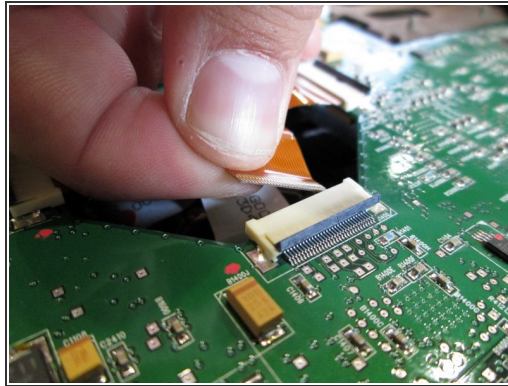
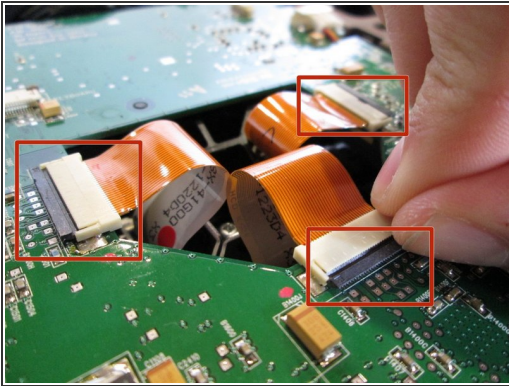
- Hold down the release tabs to remove the cables from the white tabs.

Step 5



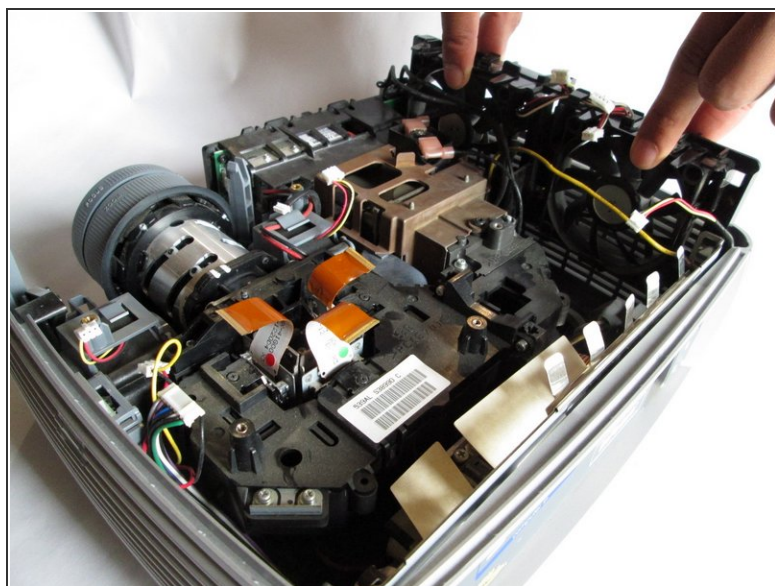
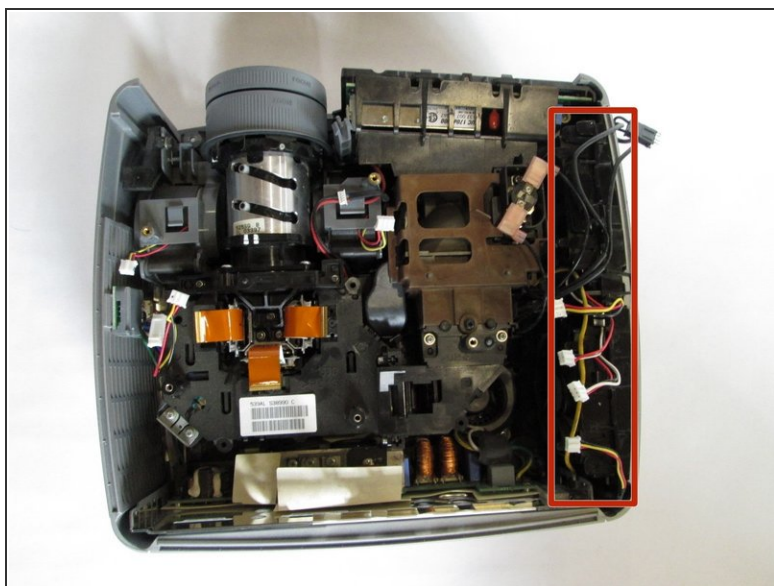
- Use the T10 Torx screwdriver to remove the five 5mm screws located throughout the motherboard.
 - Pull up the five metal tabs located at the rear of the projector.
- ⚠ Do not pull up on the metal tabs too hard or too fast because they can break easily.

Step 6



- Remove the three gold ribbons by flipping up the black taps that hold the ribbon in place.
- Pull the ribbons out carefully and place them under the main board.
- Carefully lift the entire main board up.

Step 7 — Main Fans



- Once the main board has been removed, carefully lift the fans upward. Make sure no cables are tangled in the process.

To reassemble your device, follow these instructions in reverse order.