



JBL On Stage II Power Button Replacement

This guide shows you how to replace the spring...

Written By: Janessa D Cabrera



INTRODUCTION

This guide shows you how to replace the spring on the power button.

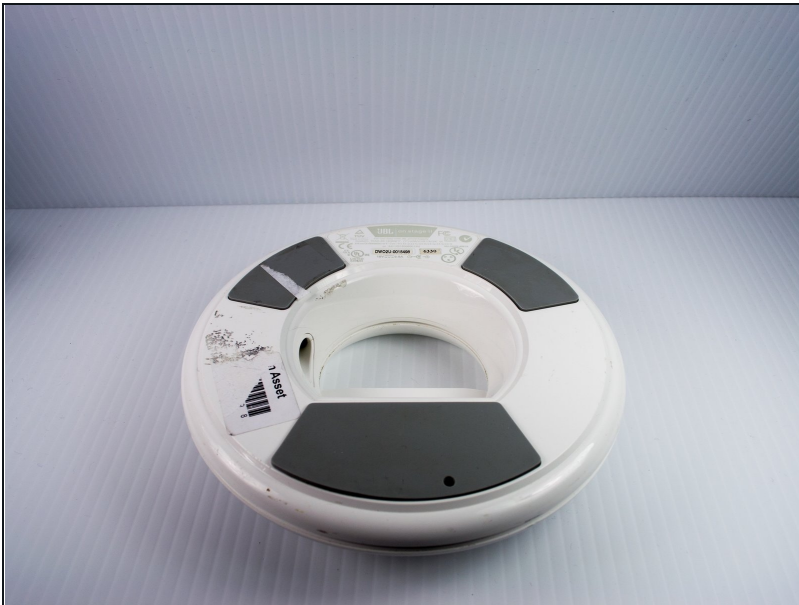
TOOLS:

Heat Gun (1)

T-10 Torx Screwdriver (1)

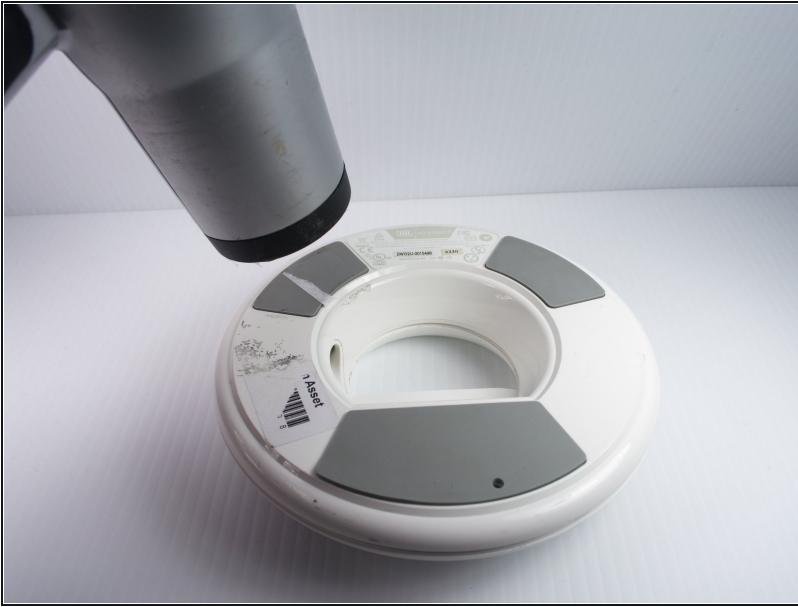
Tweezers (1)

Step 1 — Cracking the Case



- Turn the device upside down so that the three rubber pads are facing up.

Step 2



- Use a heat gun (set to low) to apply heat to one of the rubber pads until you can easily remove the pad. This step takes around 5-7 minutes.

Step 3



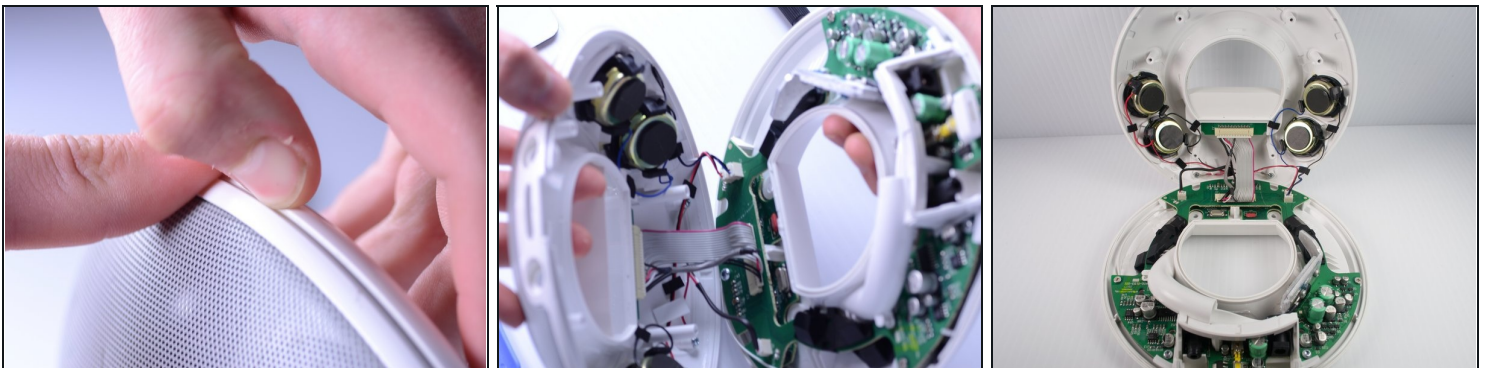
- Remove the heated rubber pad with a plastic opening tool.
- Repeat steps 2 and 3 for the two remaining rubber pads.

Step 4



- Remove the six 1cm T-10 torx screws on the bottom of the device (found under the rubber pads) using a T-10 Torx screwdriver.

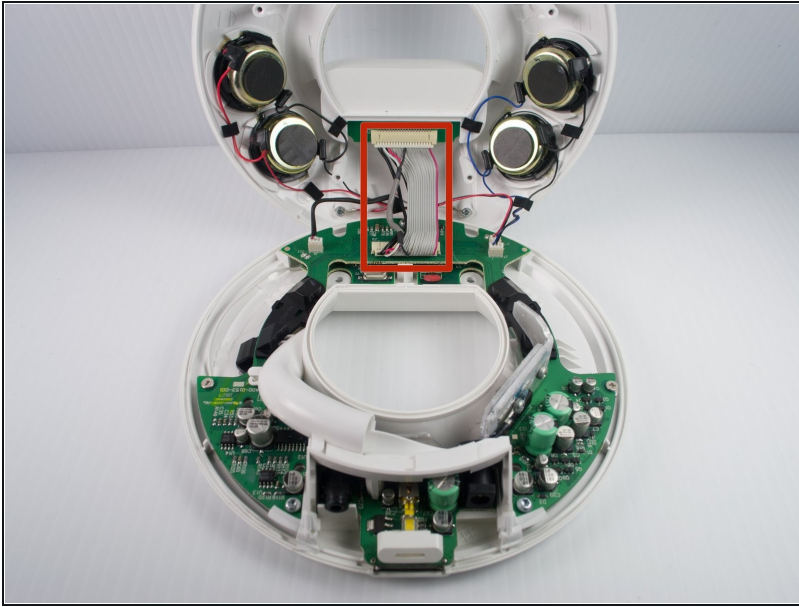
Step 5



- Open the device along its seam.

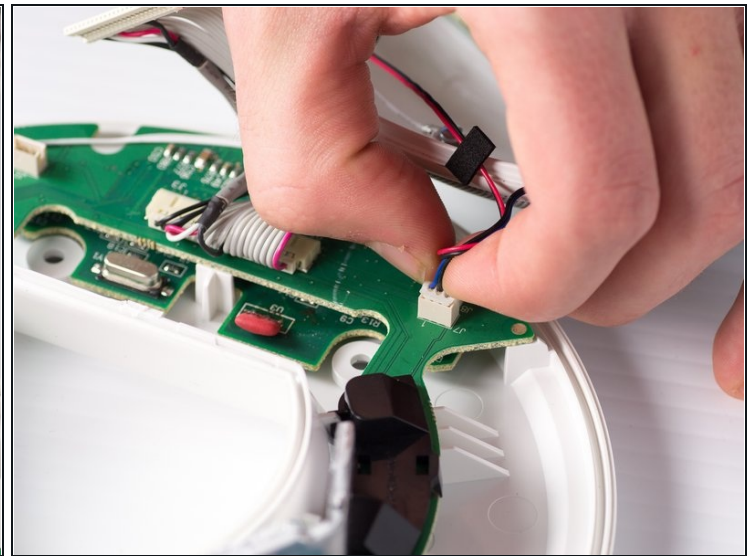
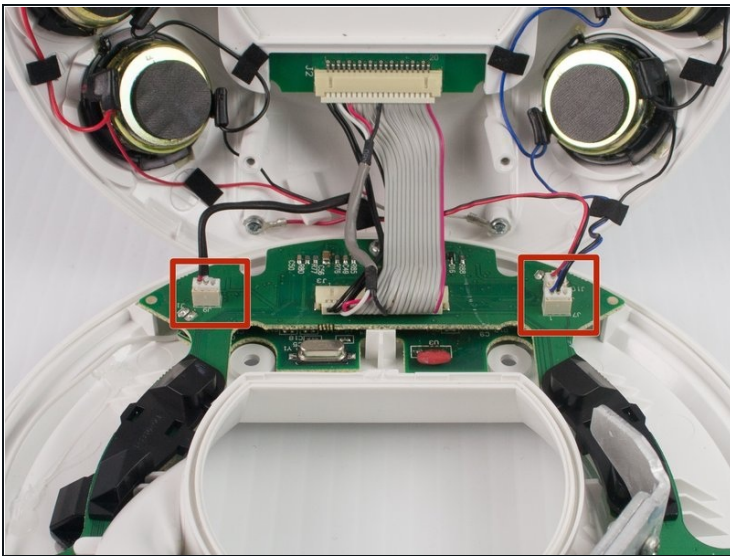
⚠ Be careful when separating the device because there are wires connecting the two separate halves.

Step 6



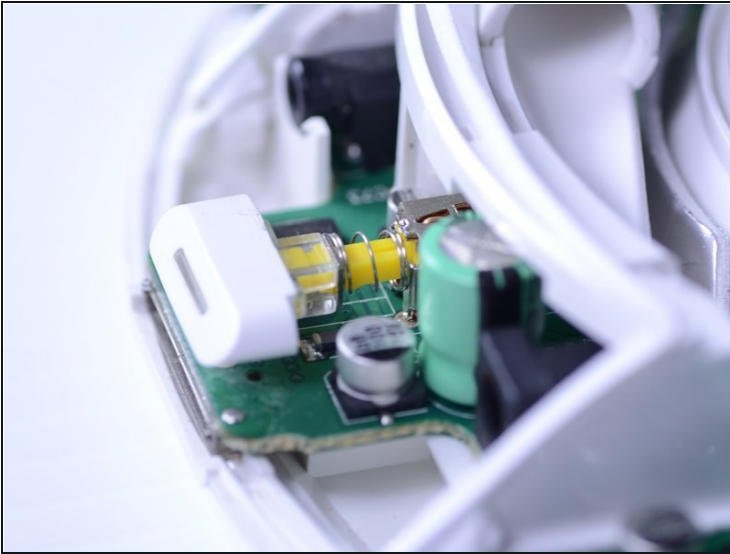
- Disconnect the ribbon cable connector from the top half of the device by pulling outward and parallel to the connecting pins.

Step 7



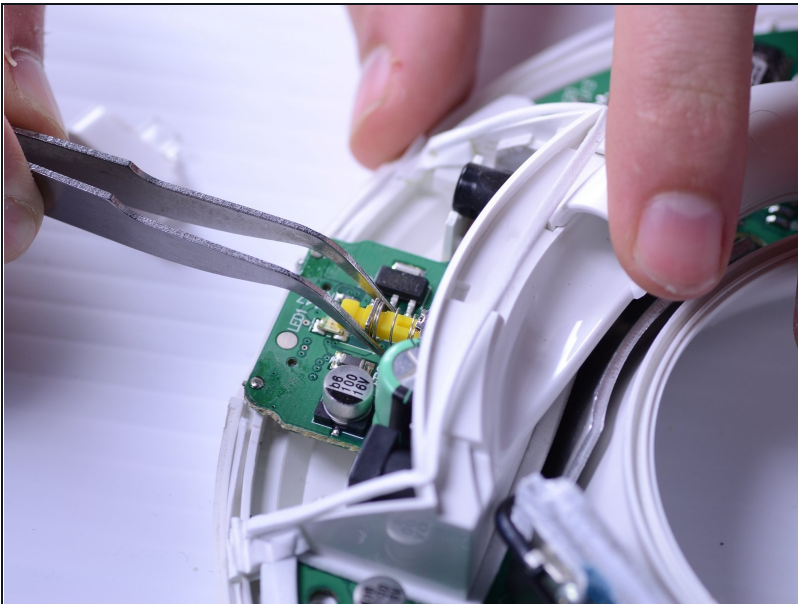
- Locate and disconnect the two molex connectors found on either side of the ribbon cable connector on the bottom half of the device.

Step 8 — Power Button



- Pull the plastic button off the post.

Step 9



- Remove the metal U-clip (compressing the spring) with [tweezers](#).

To reassemble your device, follow these instructions in reverse order.