



Floor Pump O-Rings Replacement

Install new O-rings in your Classic Floor Drive.

Written By: iRobot



INTRODUCTION

You may notice that your pump is not able to achieve the pressures it used to be able to. Your pump may be even making unusual sounds while pumping. This could be an indication that the O-rings in the pump are worn and can't make a proper seal. Use this guide to replace your worn O-rings.



TOOLS:

- [Flathead Screwdriver](#) (1)
 - [Large Needle Nose Pliers](#) (1)
- Needle Nose



PARTS:

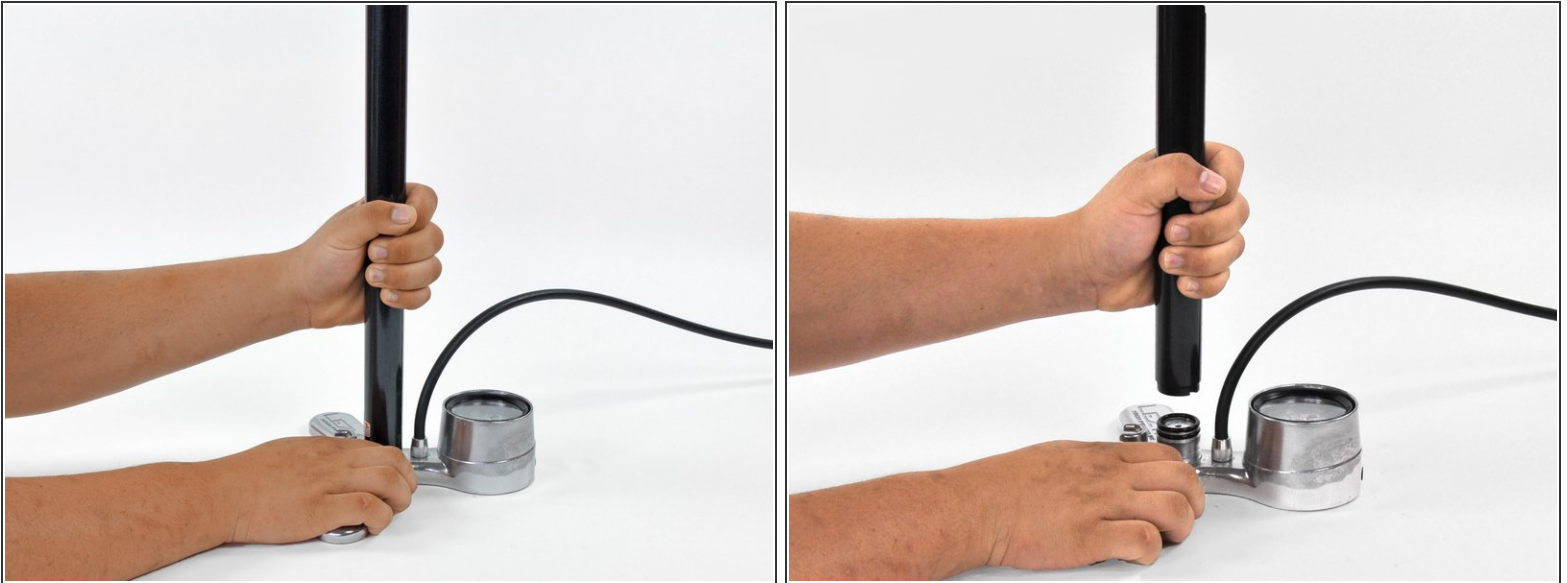
- [Classic Dirt Floor Drive Pump Replacement O-Ring Set](#) (1)

Step 1 — O-Rings



- Detach the hose from its holder.

Step 2



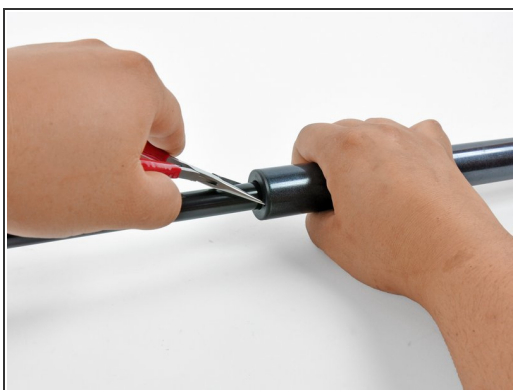
- Hold the base of the pump steady and twist the barrel counter-clockwise by hand until it completely unthreads.
 - ⓘ If you are having troubles stabilizing the base and twisting the barrel, try standing on the base and using both hands to loosen the barrel.
- Lift the barrel off the base.
 - ⓘ When removing the barrel, be sure not to lose the bump stop O-ring. It may stick to the pump base, may be stuck inside the barrel, or may fall out when you remove the barrel.

Step 3



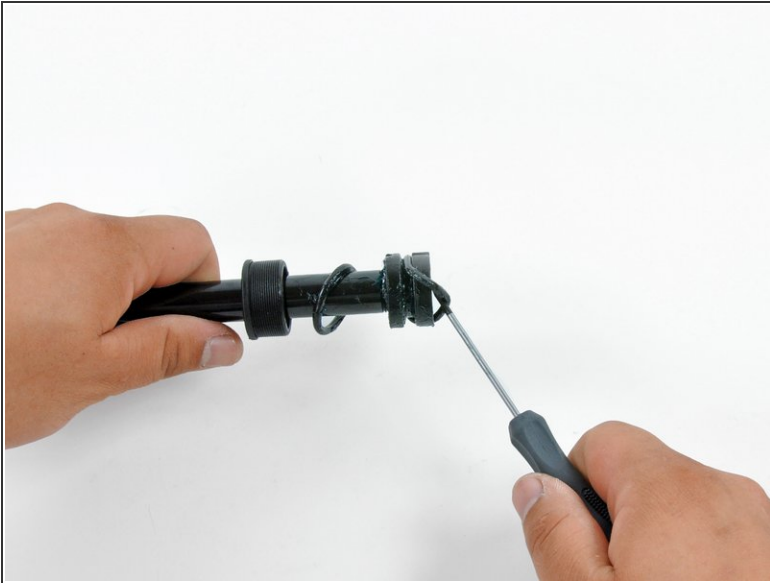
- Lift the pump handle until the top cap is exposed

Step 4



- Place the ends of needle nose pliers into the top cap holes and turn counter-clockwise until the cap is loose.
- Finish removing the top cap by hand.
- Pull the pump plunger out of the barrel.

Step 5



- Use a small flathead screwdriver to remove the plunger O-ring.
- Use the screwdriver to remove the upper bump stop O-ring.
- Install new O-rings.

 Be careful not to over-stretch or cut the O-rings if you are using the screwdriver to install them.

Step 6



- Remove the lower bump stop O-ring from the pump base.
- Remove and replace the base O-ring.

Step 7



- Insert the tips of needle nose pliers into the base cap holes and turn it counter-clockwise until it completely unthreads.
 - Remove the base cap from the pump base.
 - Remove and replace the base cap O-ring.
 - Re-assemble the pump using these instructions backwards.
- ☒ Don't forget to set a new bump stop O-ring on top of the pump base before re-installing the pump barrel.