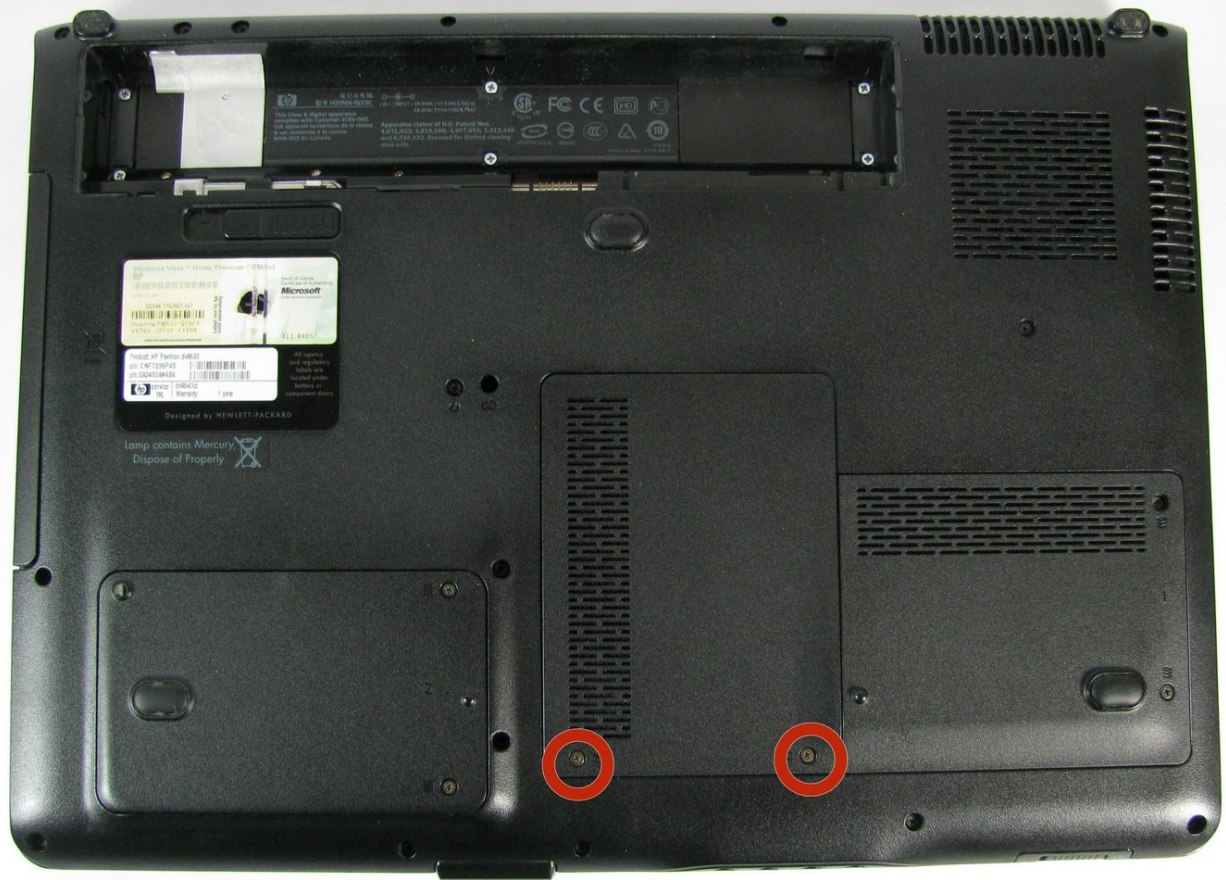




HP Pavilion dv9000 Wireless Card Replacement

Many times, connecting to a wireless network...

Written By: Erik Hoffnagle



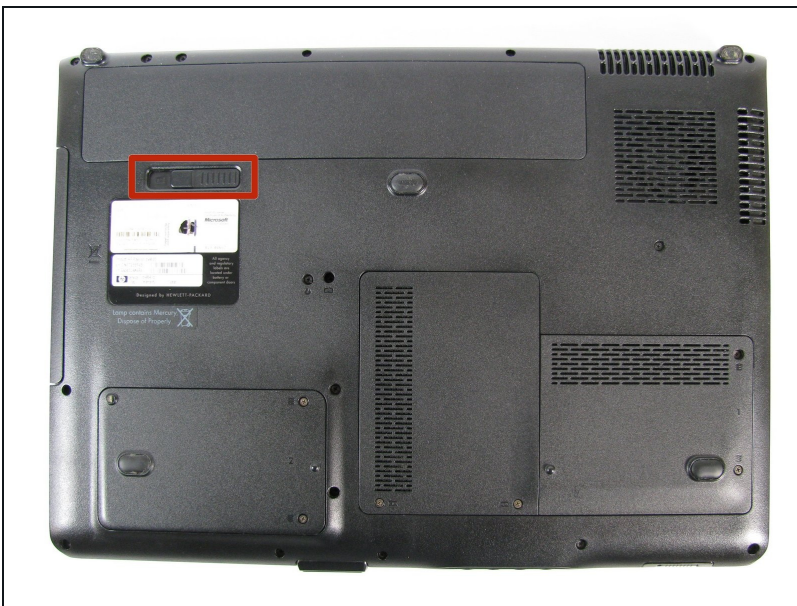
INTRODUCTION

Many times, connecting to a wireless network can be difficult. Finding the problem that isn't allowing you to connect may be even more challenging. With help from this guide, you will be able to easily replace your laptop's wireless card.


TOOLS:

Phillips #1 Screwdriver (1)

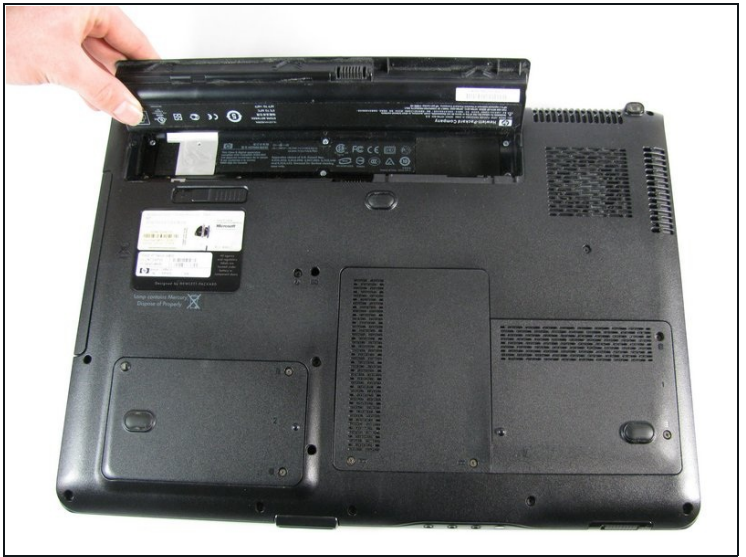
Step 1 — Battery



- Turn the laptop over to expose the bottom side.
- Locate the battery removal switch next to the battery compartment

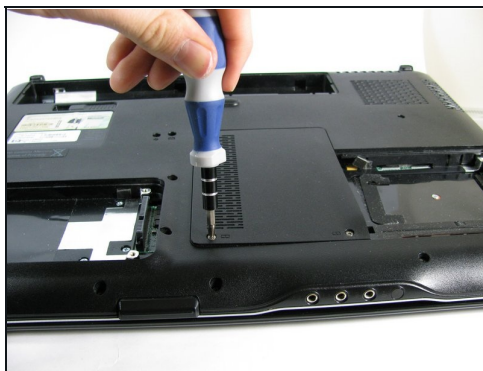
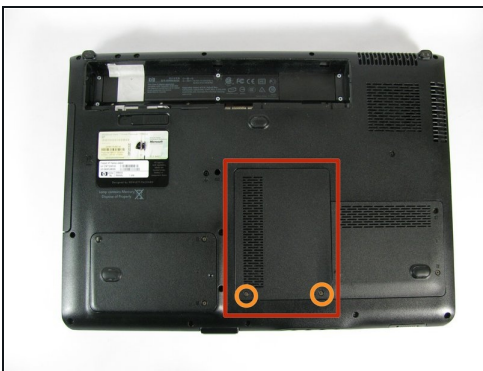
 **Important:** Before doing any repairs on the laptop, make sure it is completely powered down and unplugged.

Step 2 — Battery Removal



- Slide the switch all the way to the left to release the battery. The battery should pop up.
- Lift the battery out.

Step 3 — Wireless Card



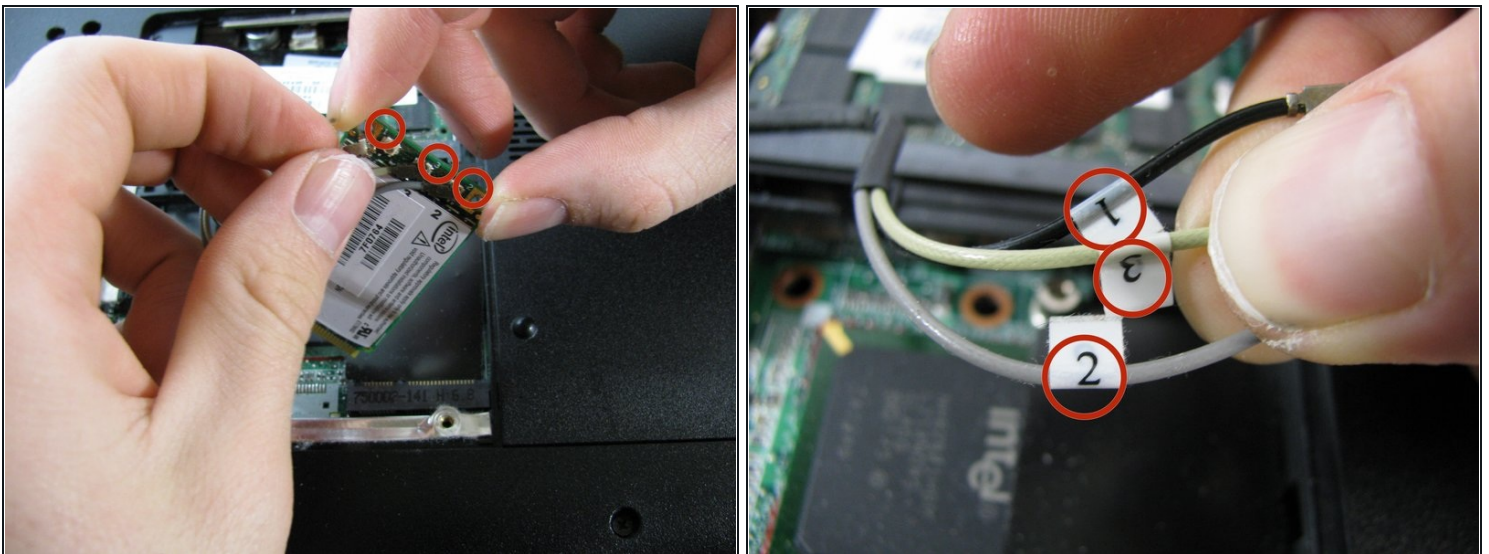
- Locate the panel that lies in the front center of the laptops underside.
 - Using a Phillips #1 screwdriver, remove the two 5mm screws on the forward end of the cover.
- Lift off the cover to expose the Wi-Fi card underneath.

Step 4



- Locate the Wi-Fi card inside of the computer.
 - With a Phillips #1 screwdriver, remove the two 11mm screws on either side of the wires attached to the top of the Wi-Fi card.
- ⚠ Lift the card from its resting location. **Be careful, the card and attached wires are fragile.**

Step 5



- Carefully pop the wires off of the Wi-Fi card. They should easily come off with a light tug.
- As you take each wire off, keep track of the numbered labels. These numbers correspond with contact points on the card.

To reassemble your device, follow these instructions in reverse order.

