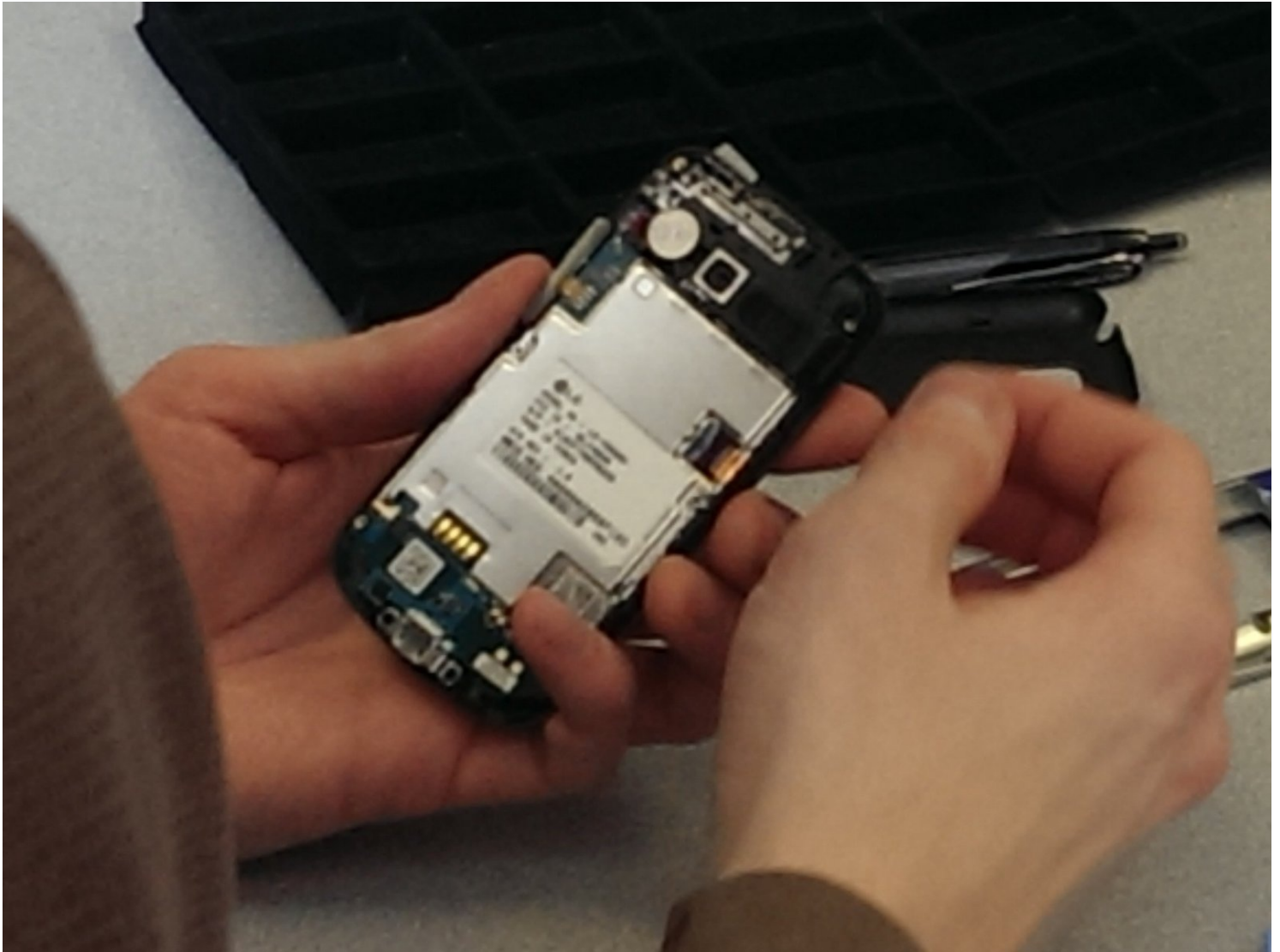




LG Vortex Screen Replacement

Follow the initial Disassembly of LG Vortex...

Written By: Jen



INTRODUCTION

Follow the initial Disassembly of LG Vortex guide before you start the replacement of the screen. This guide gives step-by-step instructions on how to replace the LCD screen.

TOOLS:

[Soft Cloth](#) (1)
[Container](#) (1)
[iFixit Opening Tool](#) (1)
[Phillips #00 Screwdriver](#) (1)

PARTS:

[LG Vortex LCD Replacement Screen](#) (1)

Step 1 — Power down the Phone



- Power the phone off
 - ⓘ The power button is located on top of the phone

Step 2 — Remove the Back Cover



- Find the two thumbnail ridges on the side and top of the phone. One is next to the micro SD slot and the other at the top of the phone
- Once the ridges are located, use the blue plastic opening tool to pry the back cover away from the rest of the phone.
- Remove the back cover and set it to the side.

Step 3



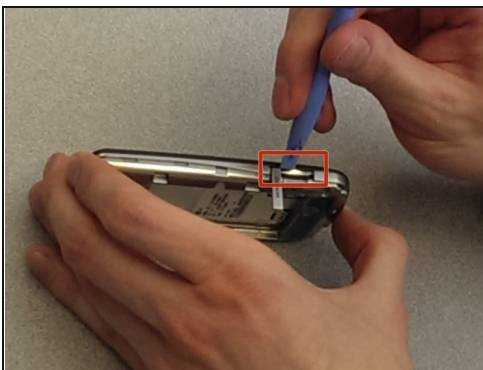
- Remove the battery using the blue plastic opening tool.
- There is a small thumbnail ridge at the top left corner of the battery for ease of removal.
- Put the battery aside.

Step 4 — Unscrew the Back Frame



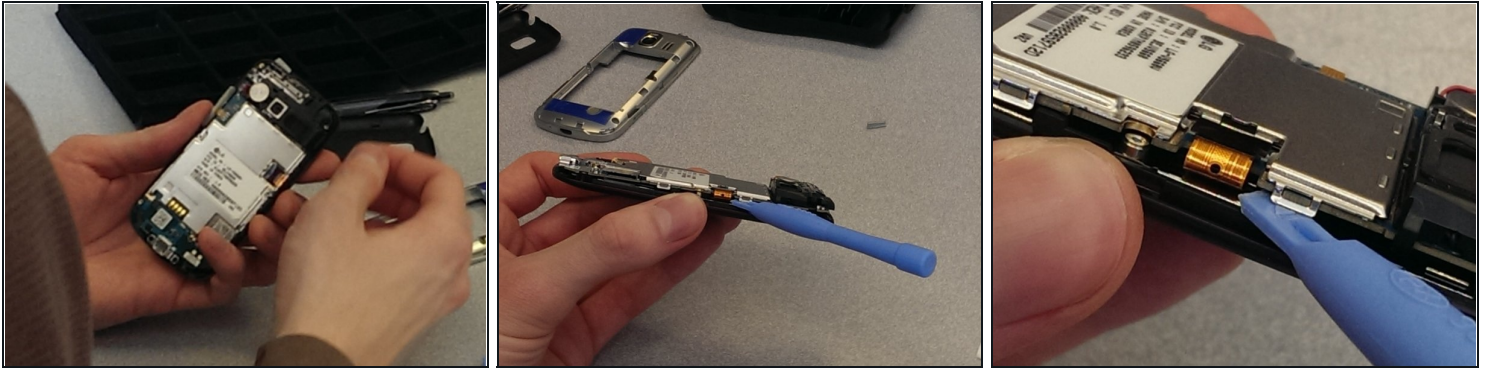
- ① All screws are the same size screwdriver head #00
- Use the precision screwdriver to remove the 6 screws along the edges of the phone.
 - There are 2 screws at the top in each corner, 2 in the middle on the sides, and 2 in the bottom corners.
- ① Place the screws in a container to ensure they aren't lost.

Step 5 — Remove the Back Frame



- Use the blue plastic opening tool to remove the back frame from the rest of the phone.
- Pry at the micro SD slot. Push the cover for the SD slot away from the front of the phone and pry the back frame away from the rest of the phone.
- Pry your way around the entire phone to separate the face from the frame.

Step 6 — Screen



- Unclip the screen connector that is connecting the screen to the system board. It is on the right side of the phone, and looks like a thin piece of bronze plastic.

⚠ Be gentle.

Step 7



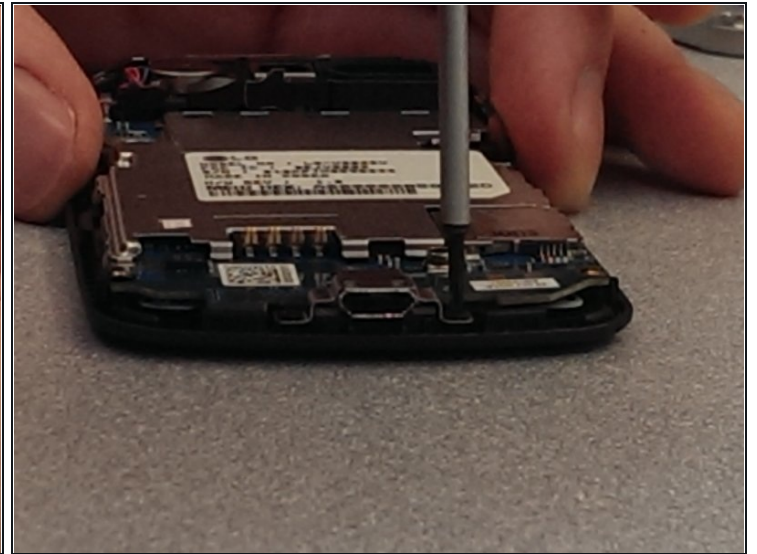
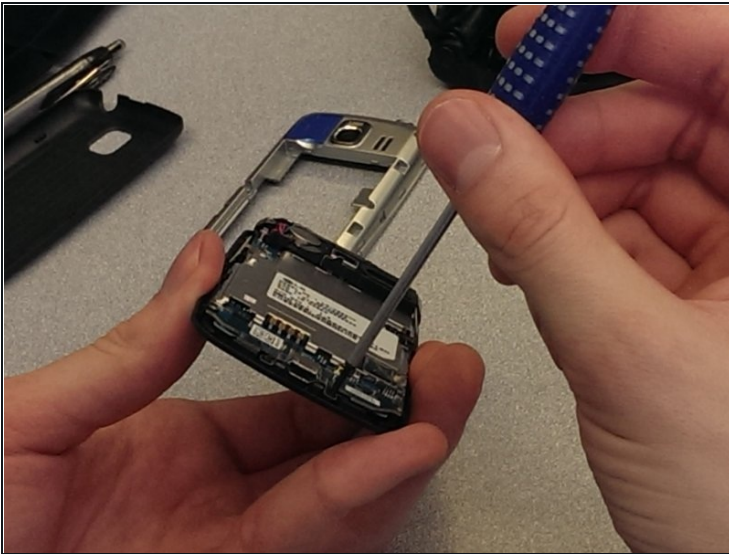
- Pull the volume button away from the case and set aside. It is located on the left side of the phone, and is held to the frame by a small nub.

Step 8



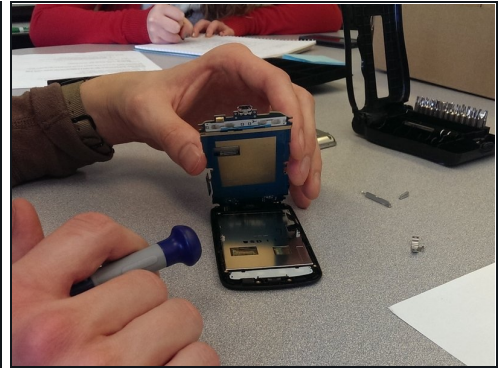
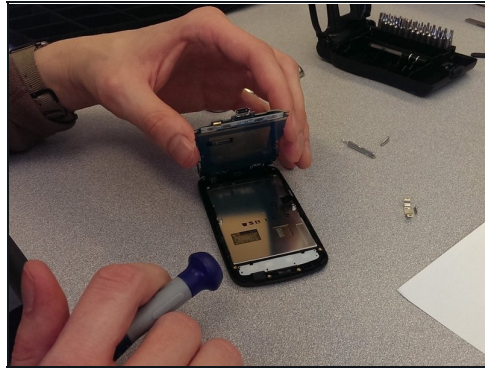
- Pull the white piece underneath the volume button away from the frame.

Step 9



- Unscrew the two short black screws at the bottom of the phone, which are holding the USB port to the frame.
- Place the screws in a safe place

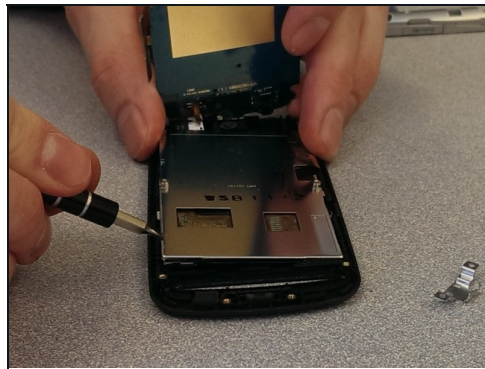
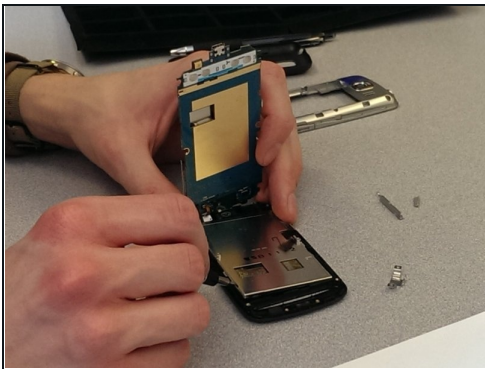
Step 10



- Lift the system board up and away from the front screen

⚠ Caution! Perform this step slowly, because the two pieces will still be attached at the top of the phone.

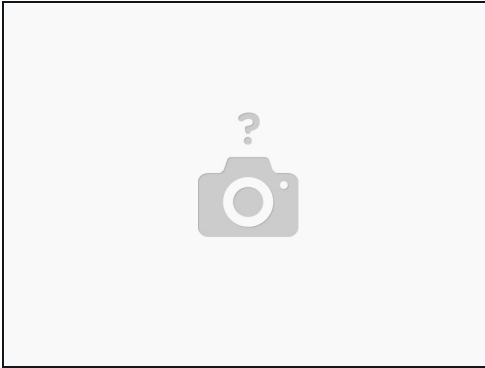
Step 11



- Loosen the screen from the frame at one of four corners using a flat head screwdriver.
- Look for small rectangle holes and use these to pry the LCD screen away from the face of the phone (the frame).
- Remove the LCD screen.

⚠ Be sure not to touch or contaminate the LCD or the clear face with dust or your hands.

Step 12



- Install new screen.

⚠ Important: Be extremely careful not to get the front screen or clear plastic face dirty—dust will affect the usability.

Step 13



- Reverse the steps to reassemble the phone.

To reassemble your device, follow these instructions in reverse order.