



Linksys BEFW11S4 Teardown

Written By: William McKinnerney



INTRODUCTION

This wireless router stopped working, so I wanted to take a look at it's innards.



TOOLS:

- [Phillips #1 Screwdriver](#) (1)
 - [Spudger](#) (1)
 - [Smart Wrench](#) (1)
-

Step 1 — Linksys BEFW11S4 Teardown



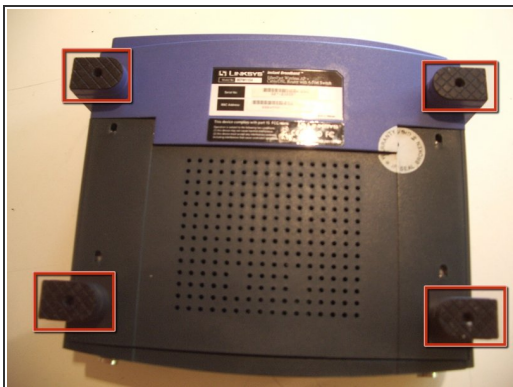
- Waiting to be disassembled...

Step 2



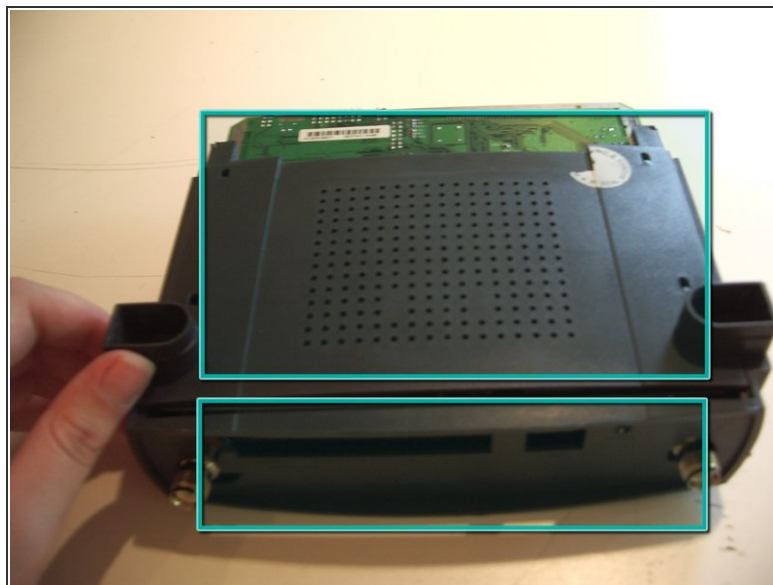
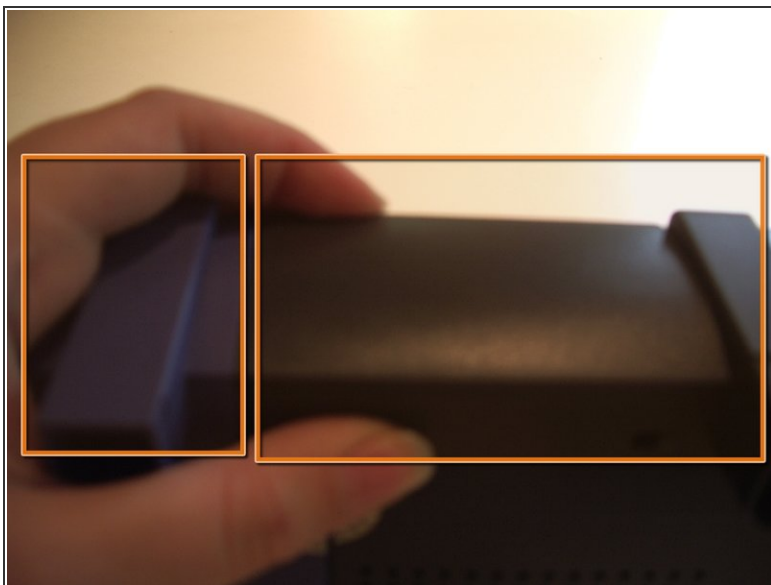
- Remove antennas.
- Remove nuts and washers around antenna connectors.
- Push in antenna connectors.

Step 3



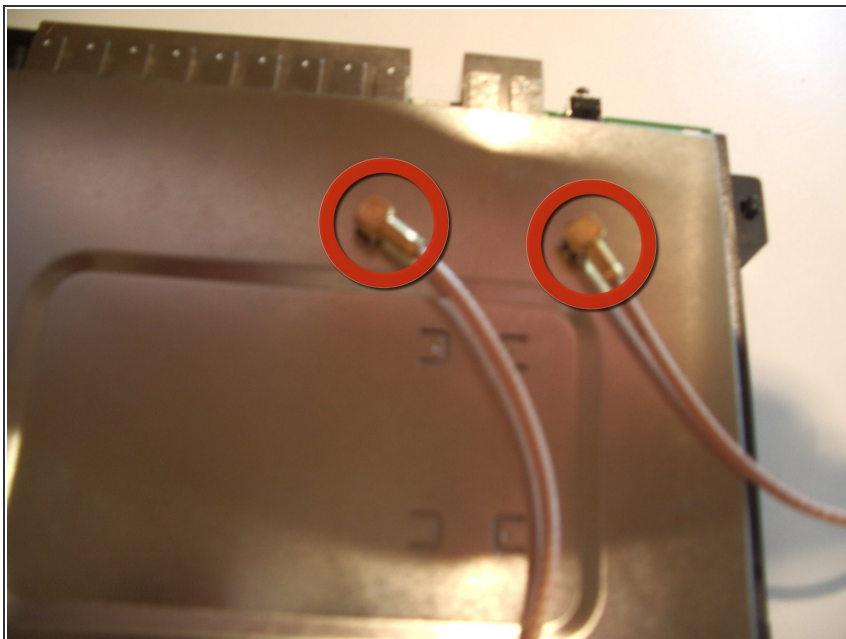
- Remove feet (with flat-head screwdriver, fingernails, etc).
- Unscrew the screws.

Step 4



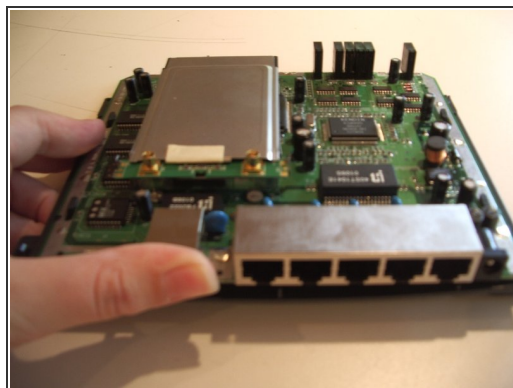
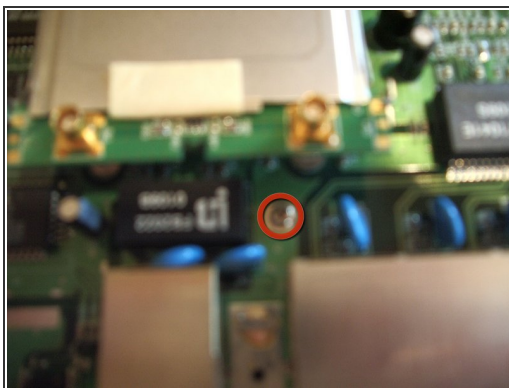
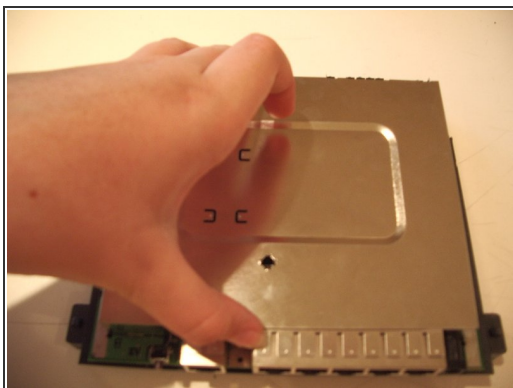
- Pull apart blue front from black back with a LOT of force.
- Slide and pull up bottom. (Make sure the antenna connectors get through.)

Step 5



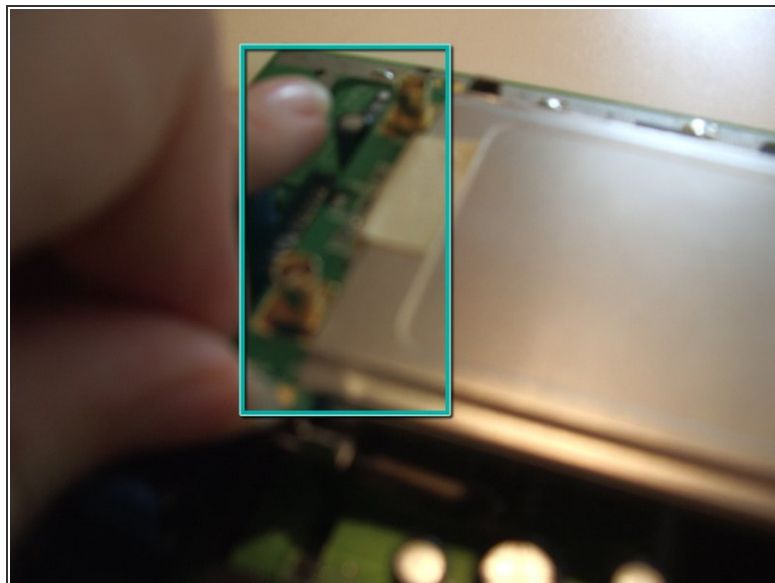
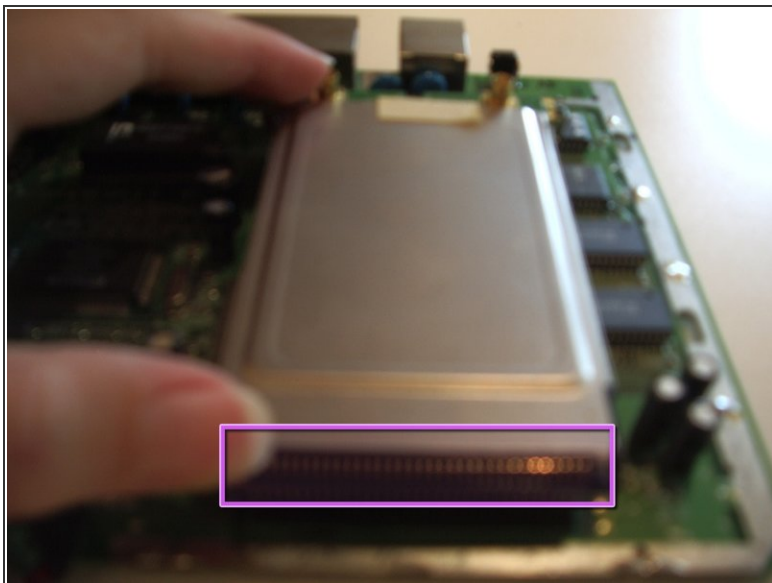
- Twist and pull out antenna connector feeds.


Step 6



- Pull up RF shield from motherboard.
- Unscrew the motherboard from the bottom.
- Push the motherboard forward (as in this picture) to unlatch it from the bottom.

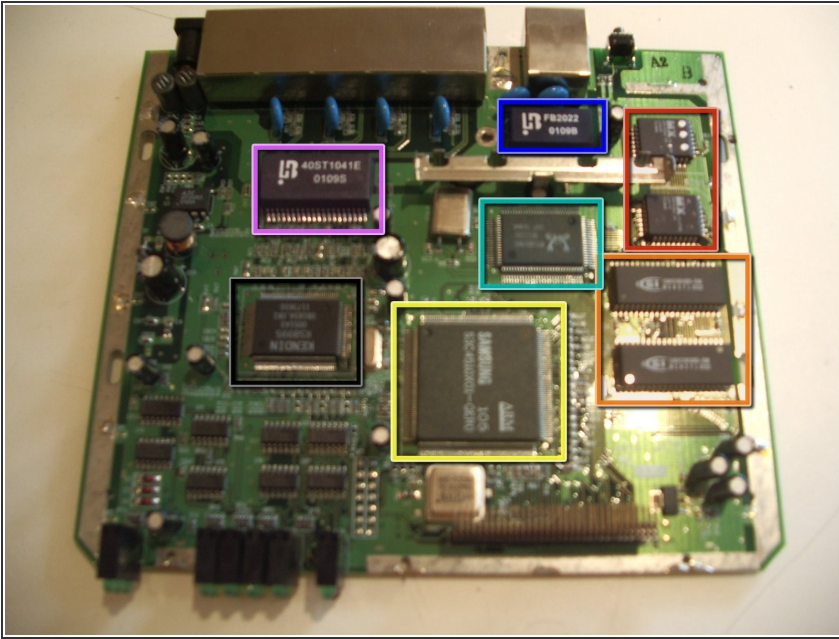
Step 7



 Some people have a card where you have to unscrew it. If that is your case, do that. The instructions below is for my type of router.

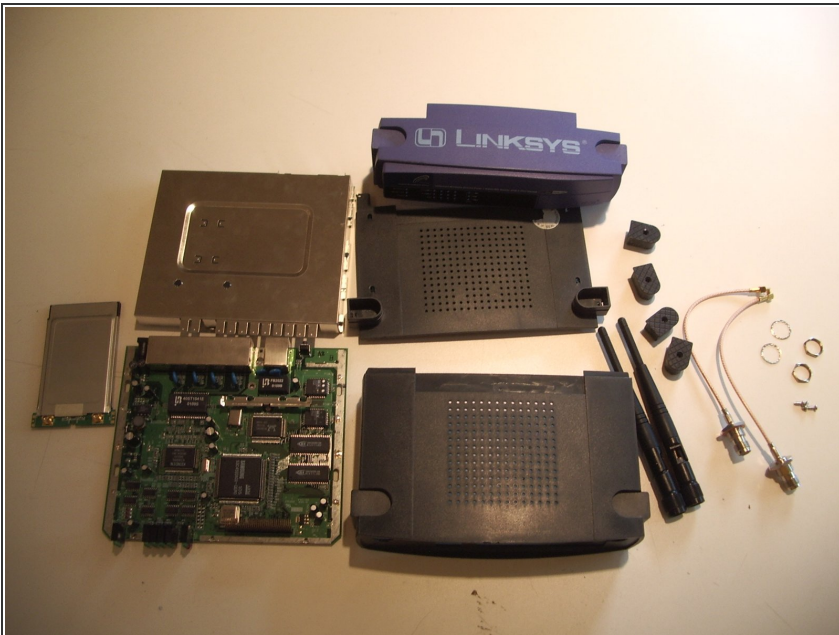
- Push the card forward to deattach the pins.
- Remove the card from the metal holdster.

Step 8



- Here are the markings on the motherboard chips. If you have any info on these chips, please comment!
- Macronix 29F040QC-90
- ISSI IS41C16100S-50K
- SAMSUNG ARM S3C4510X01-QERO
- RMC RTL8019AS
- Bothhands FB2022
- Bothhands 40ST1041E
- Kendin KS8995. Kendin has since been bought by Micrel.

Step 9



- Enjoy!

To reassemble your device, follow these instructions in reverse order.