



# PSP E1000 UMD switch Replacement

Written By: ZFix



PlayStation Portable

## PSP-E1004

### UMD switch replacement



---

## INTRODUCTION

PSP E1000 / E1004

not read UMD games and you haven't indication for insertion games. The problem probably is in UMD switch.

You can see the video:

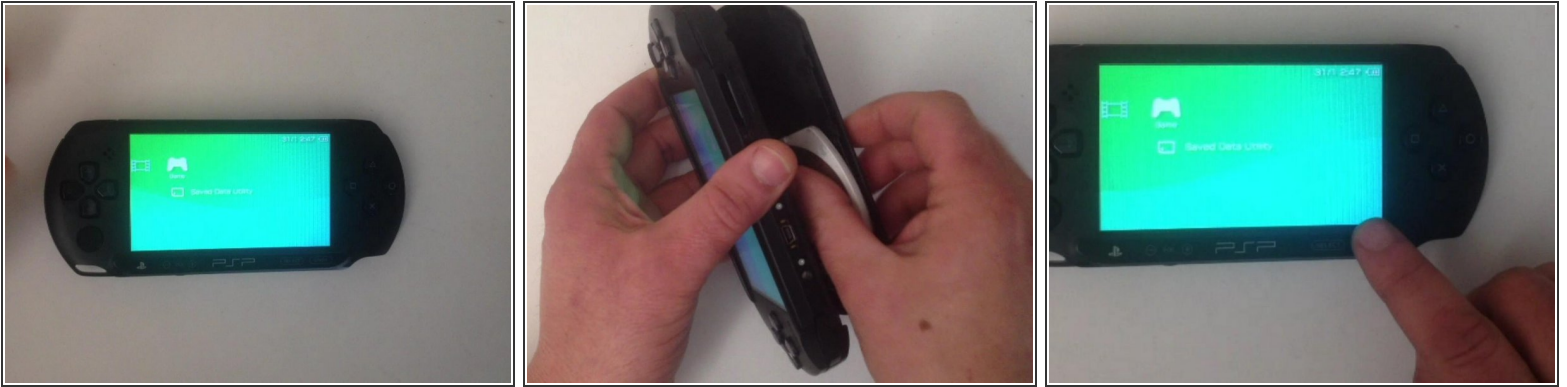
[video: <https://www.youtube.com/watch?v=oQleOuZHqHQ>]



### TOOLS:

- [Phillips #00 Screwdriver](#) (1)

## Step 1 — UMD switch



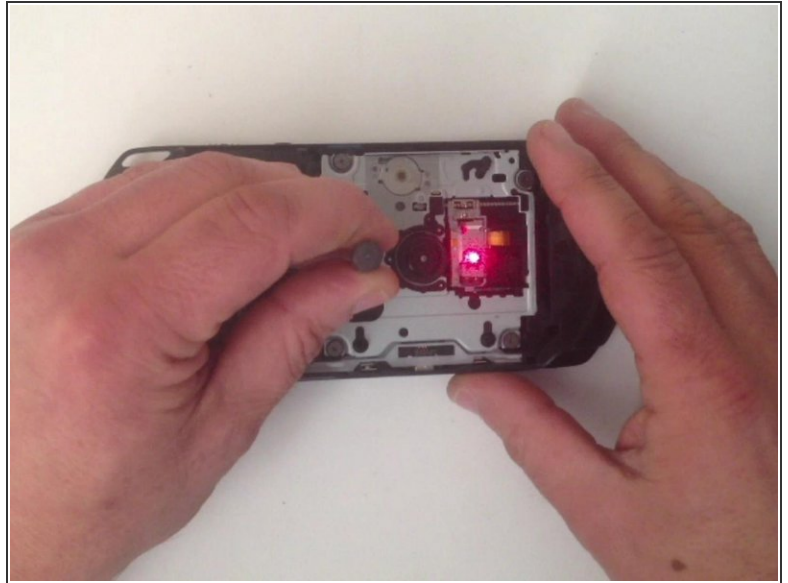
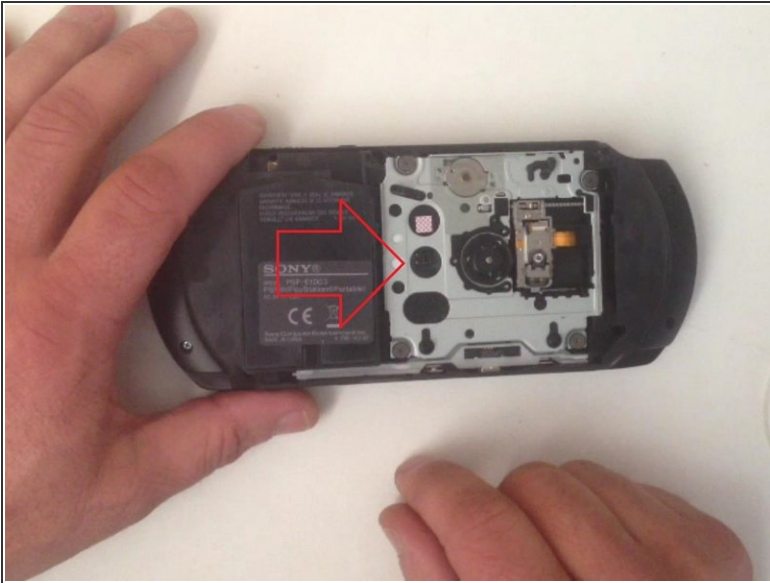
- If you haven't indication for inserted disk the problem probably is in UMD switch.

## Step 2



- Unhook the door metal plate and disassemble UMD door.

### Step 3



- With a screwdriver I short the UMD switch to test the laser.

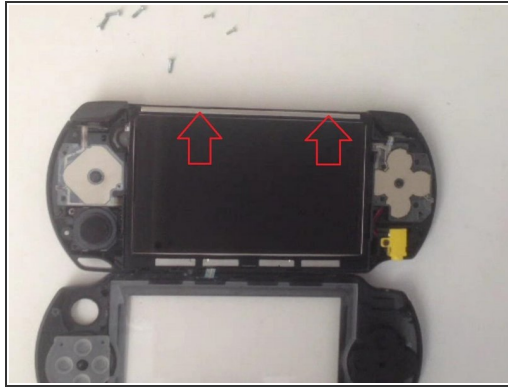
### Step 4



- Now let's disassemble it.

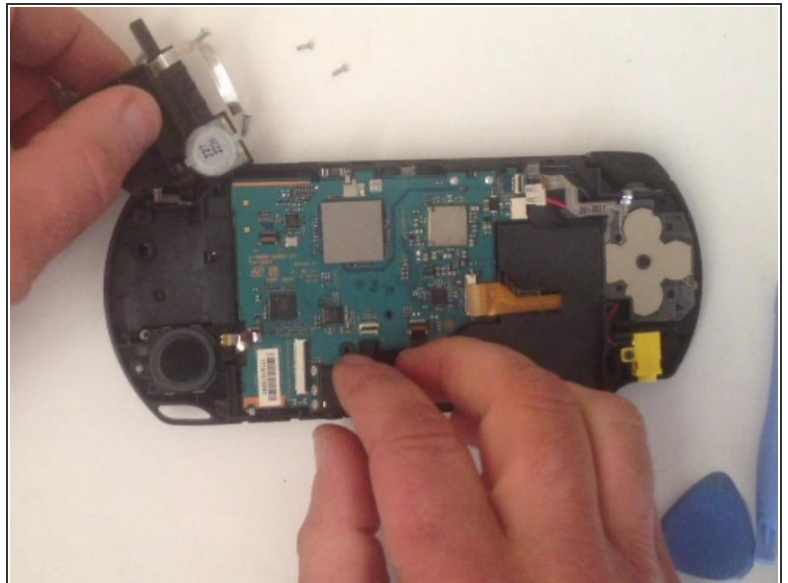


## Step 5



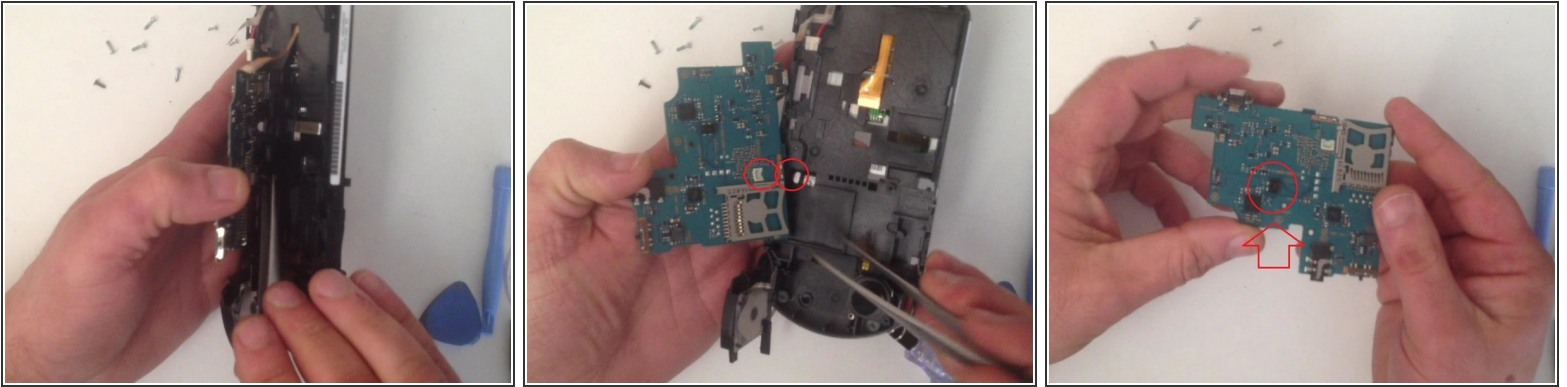
- **Disconnect and remove the display.**

## Step 6



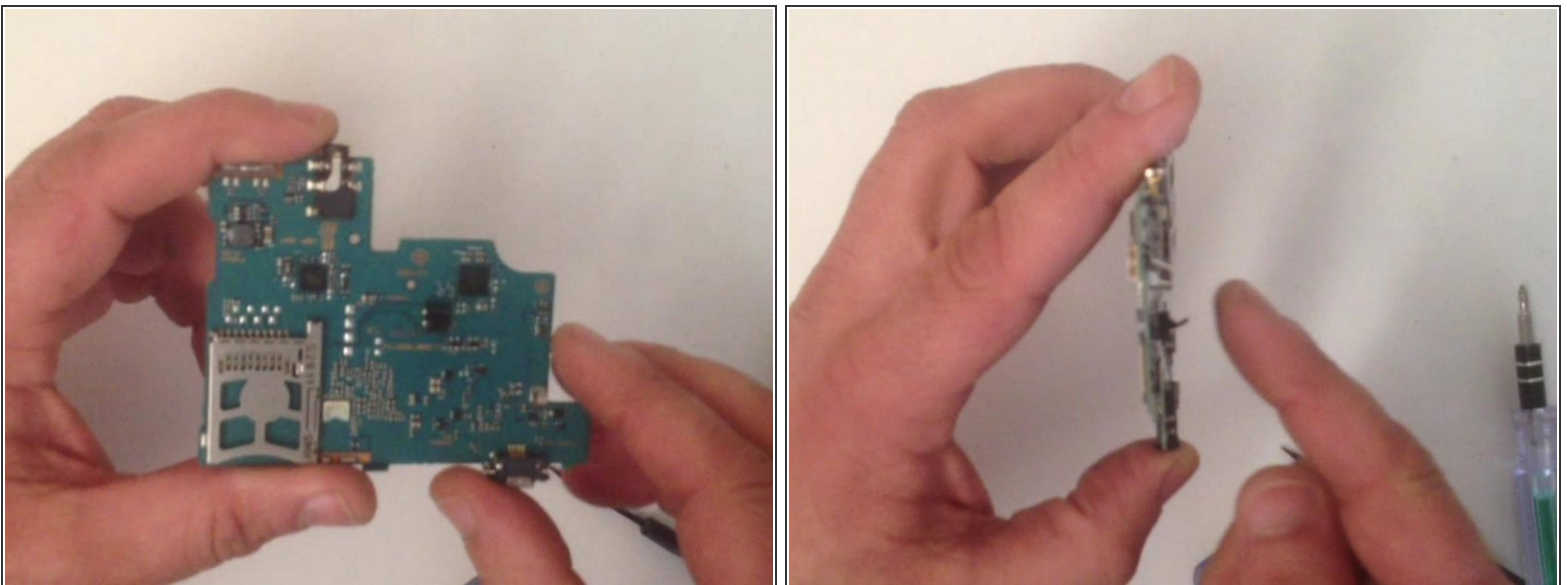
- **I must disconnect 7x cables and unscrew a screw.**

## Step 7



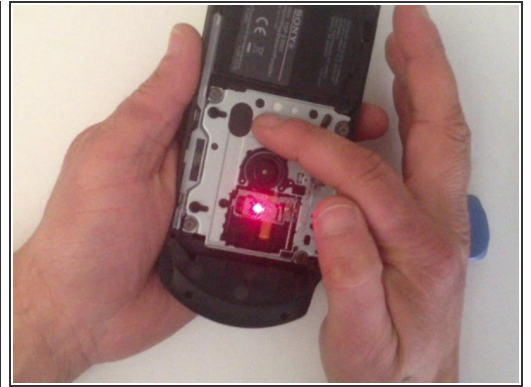
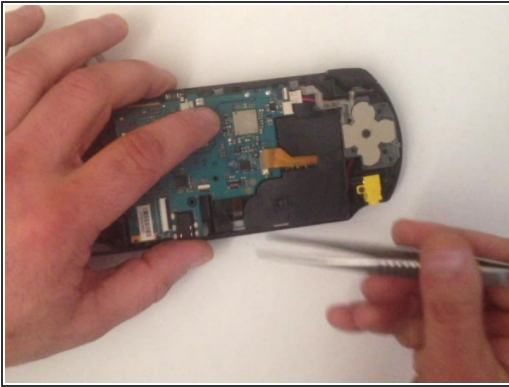
- Now I disconnect the battery connector and here is the mainboard.

## Step 8



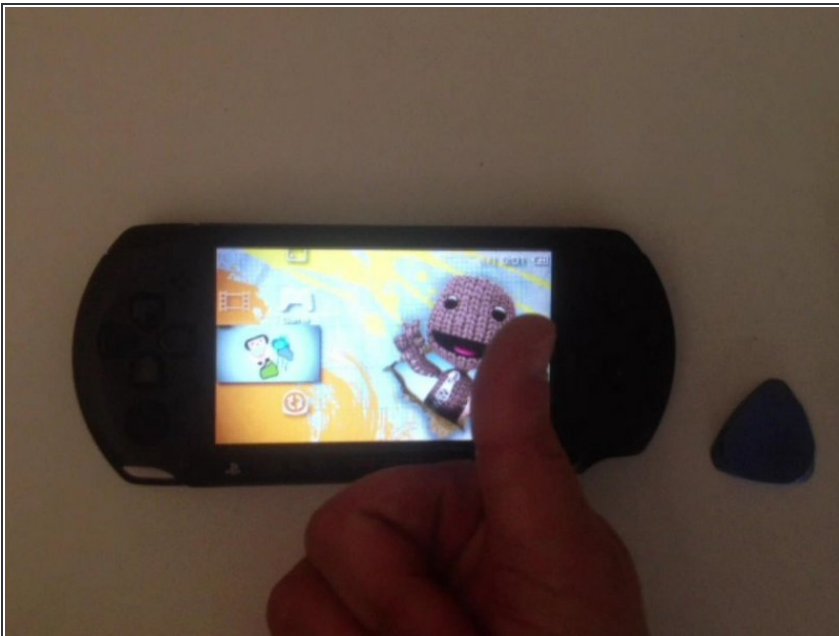
- I used soldering station to remove the old one and put the new one (UMD switch).

## Step 9



- Let's assemble and test it.

## Step 10



★ And it works!

To reassemble your device, follow these instructions in reverse order.