



Morphy Richards Iron Teardown

Written By: Richard fox



Iron Before



TOOLS:

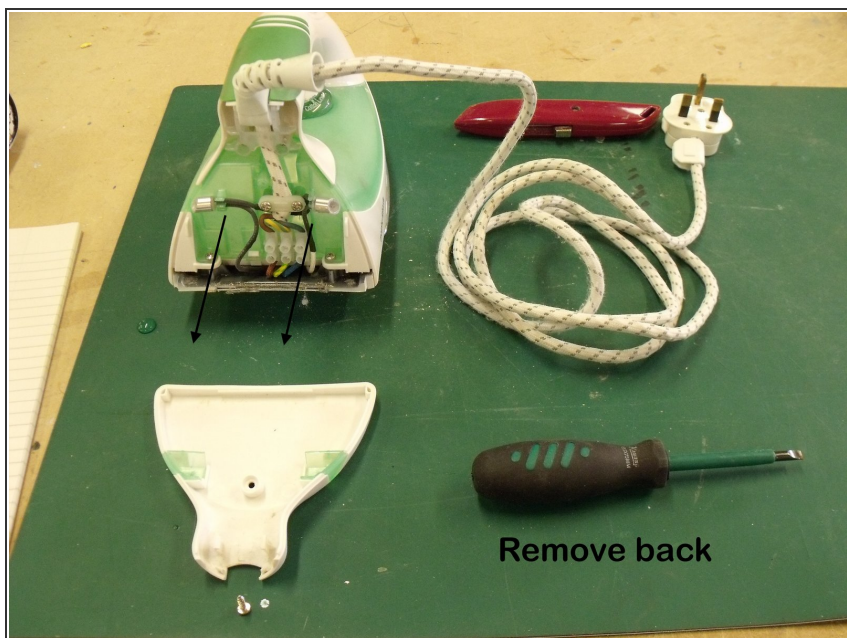
- [Flathead Screwdriver](#) (1)
-

Step 1 — Morphy Richards Iron Teardown



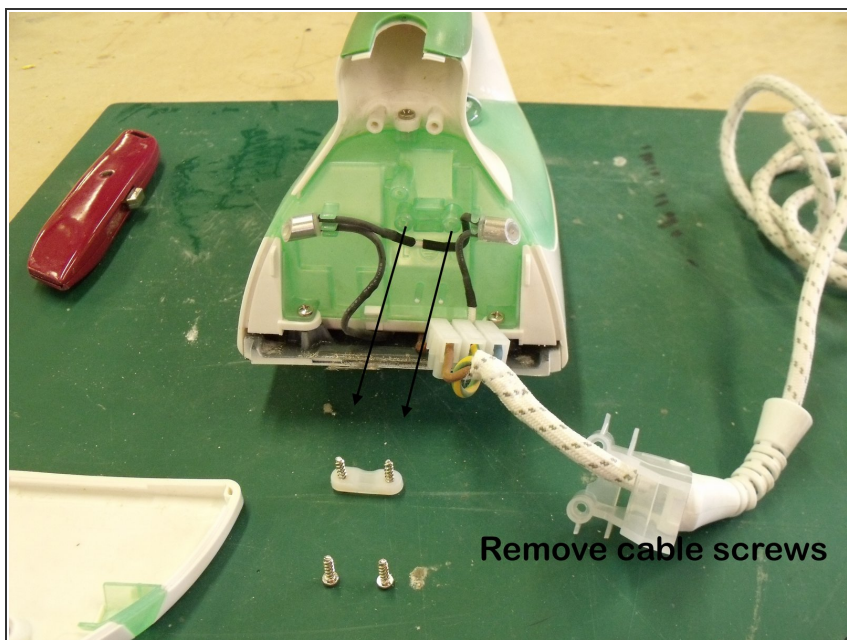
- This is the iron we will take apart.

Step 2



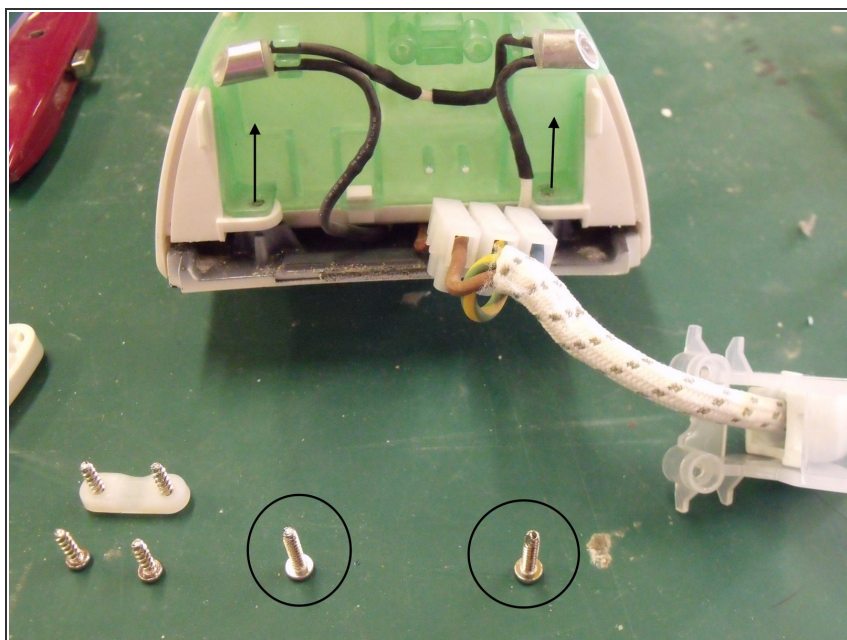
- First remove the rear of the iron using the flathead screwdriver.

Step 3



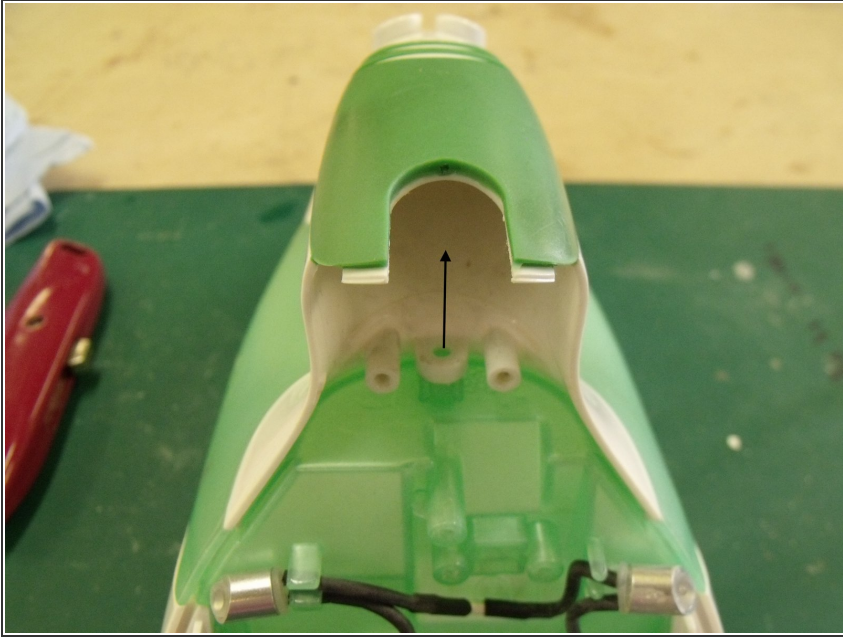
- Next remove the cable bridge bracket.

Step 4



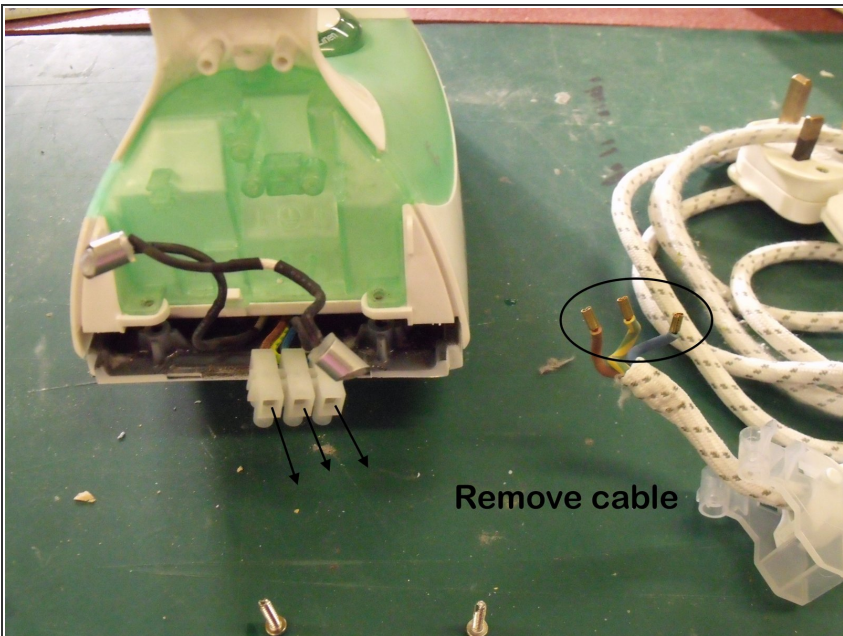
- Next remove the screws from the base. (see arrows for location)

Step 5



- Next remove the screw the hold the top on.

Step 6



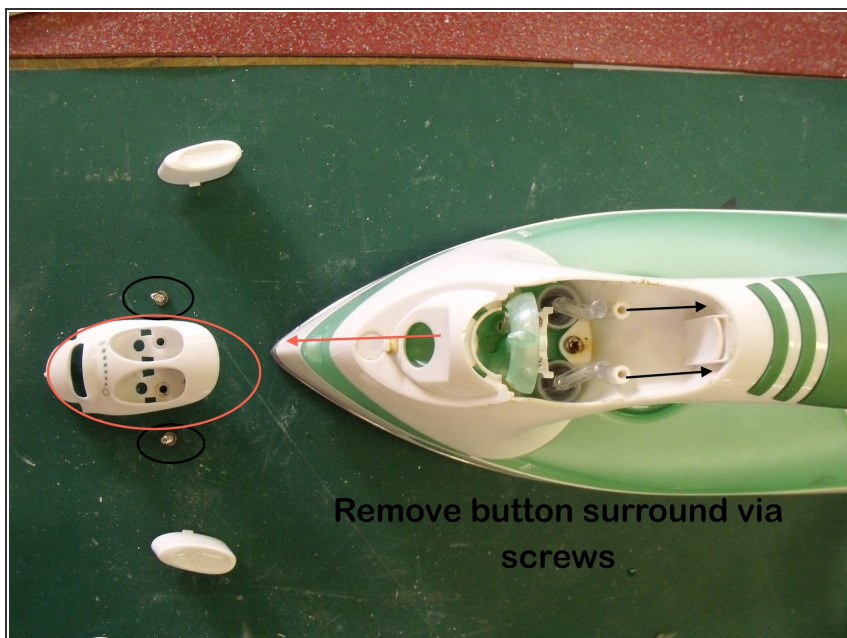
- To free the long cable remove from terminal block at rear.

Step 7



- At the front of the iron pull out the buttons for the steam and water.

Step 8



- Next unclip the button holder (red circle) by undoing the screws (black circle)

Step 9



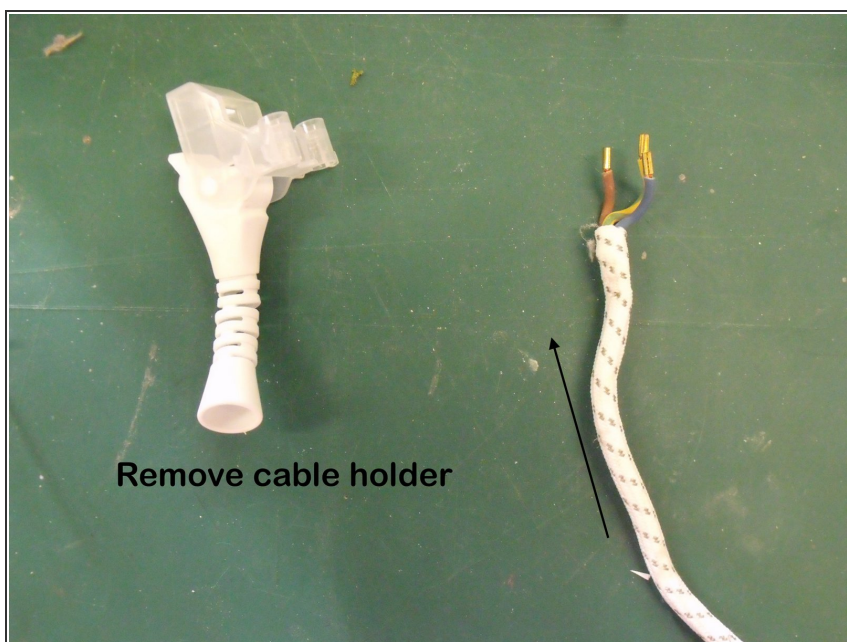
- Next remove the bridge clip from the arrows position.

Step 10



- Next remove the inner button (black circle)
- Now remove the centre screw (red arrow)

Step 11



- slide off the cable holder from the cable.

Step 12



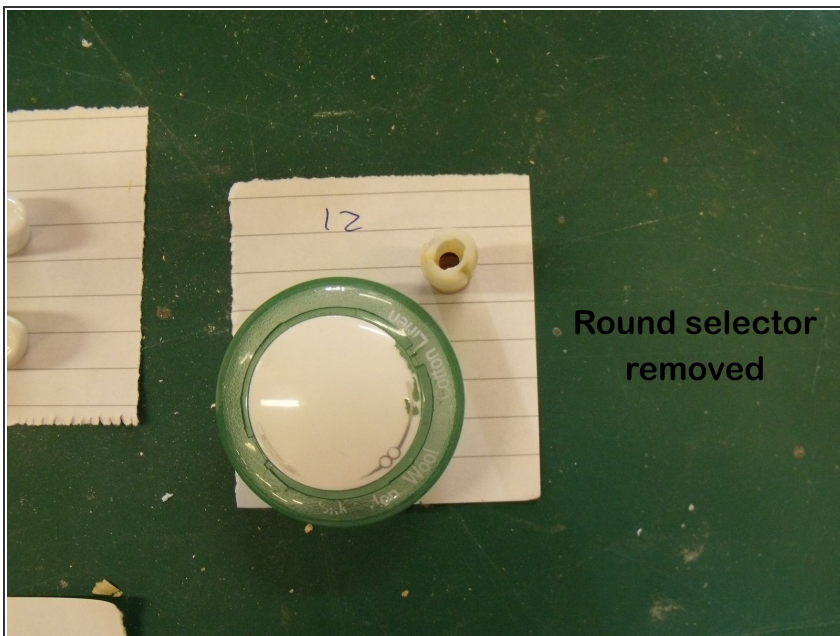
- Disassemble the plug
- First remove the casing.
- Now remove the wires from the pins.
- Next remove the pins.

Step 13



- Remove front of the iron by undoing the screw (arrow) by first taking off cover cap.

Step 14



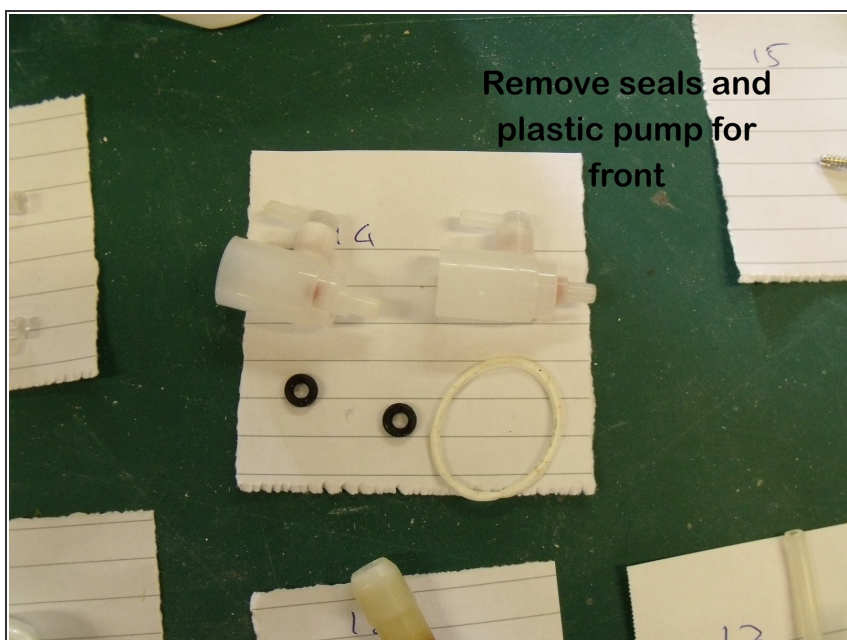
- Next take out round selector, this is simply clipped so can be pulled out with pliers.

Step 15



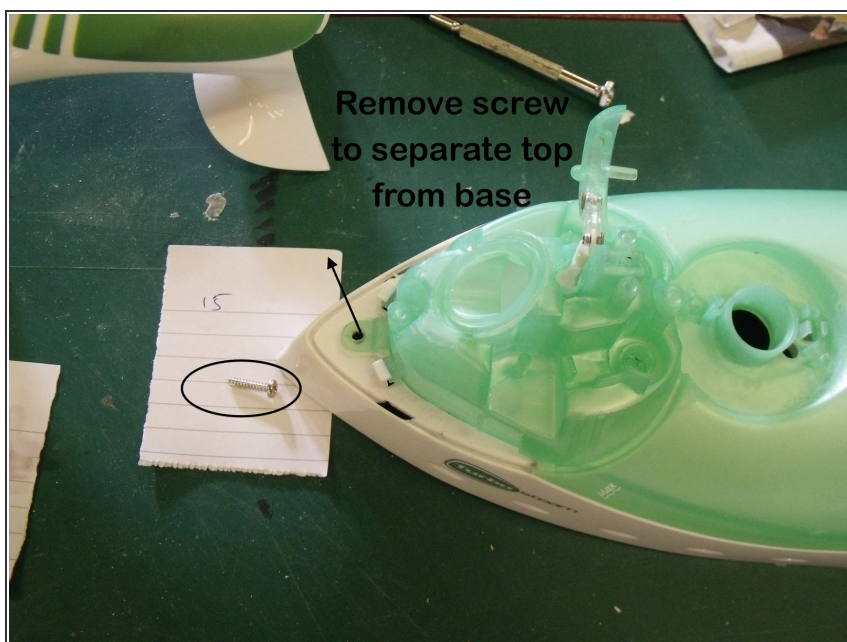
- Next remove the washer parts at the front of the iron.
- Take the tubing off.

Step 16



- Remove the seals for the water pump.
- Now take pumps out.

Step 17



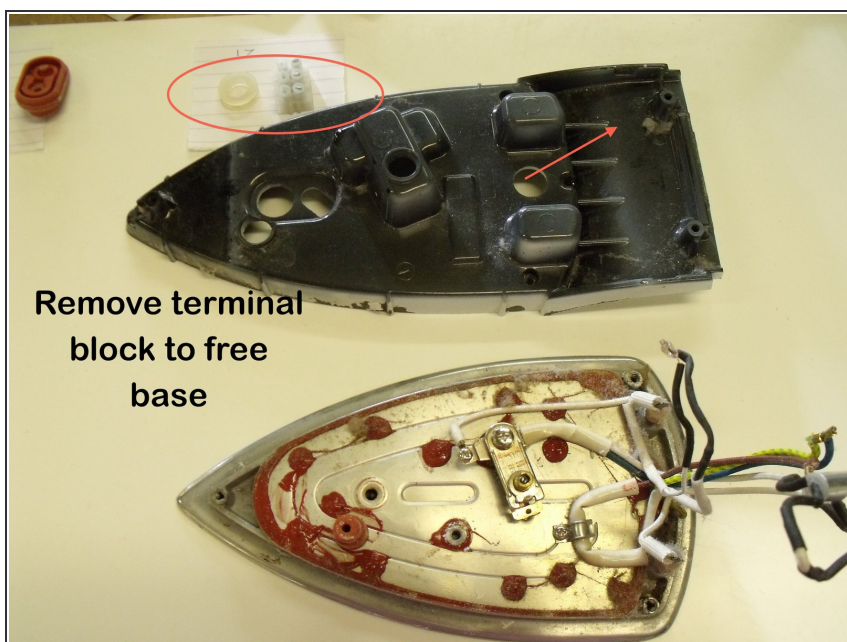
- Remove the screw (circled) this will lead to the separation of the base and the top.

Step 18



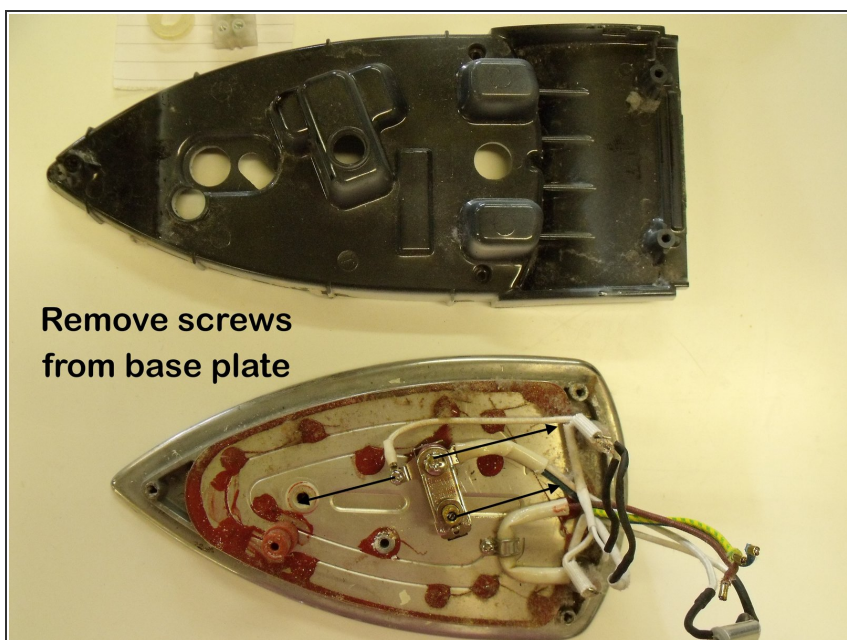
- Remove the top of the iron to reveal the under parts.
- Now remove the rubber seals from the plate.
- Take out the screws linking to the stainless steel base.

Step 19



- Remove the terminal block from the wires.
- Next take off the black section of the iron.

Step 20



- Now remove the screws from the steel base.

Step 21



- Next remove each individual part (mostly wiring)

Step 22



- All parts at the end of the process.

To reassemble your device, follow these instructions in reverse order.