



LG LX160 Back Casing Replacement

The following steps will provide support on how...

Written By: Shane Smith



INTRODUCTION

The following steps will provide support on how to remove and replace the casing of a damaged LG LX160 flip phone. Use an area that is clean and clear of debris and make sure that you have the proper tools for replacement before taking apart your device.

TOOLS:

Phillips #00 Screwdriver (1)

Spudger (1)

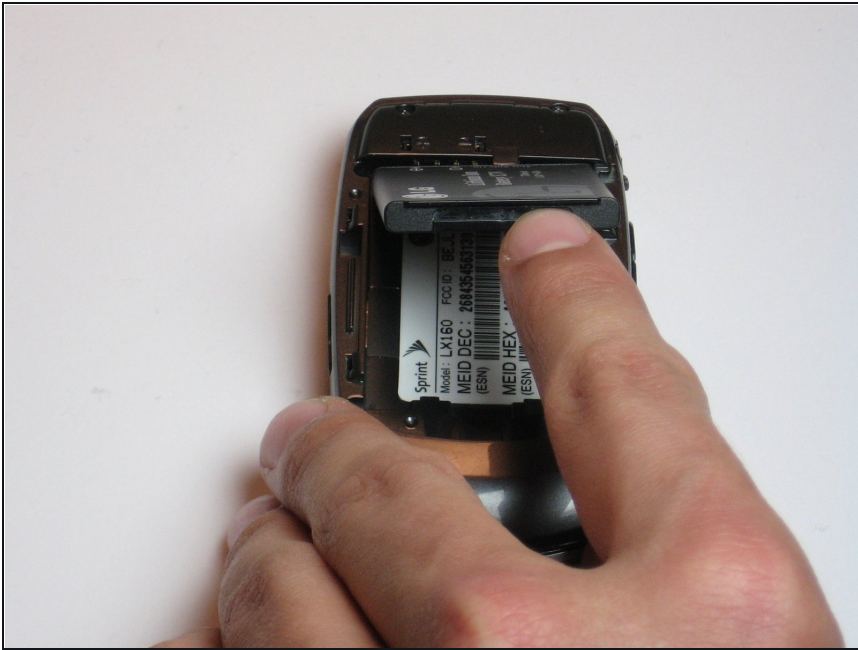
Tweezers (1)

Step 1 — Battery



- Place the phone on a flat surface with the back facing upward.
- Remove the back panel by placing your thumb on the LG logo and sliding the panel in a downward motion until the panel is removed.

Step 2



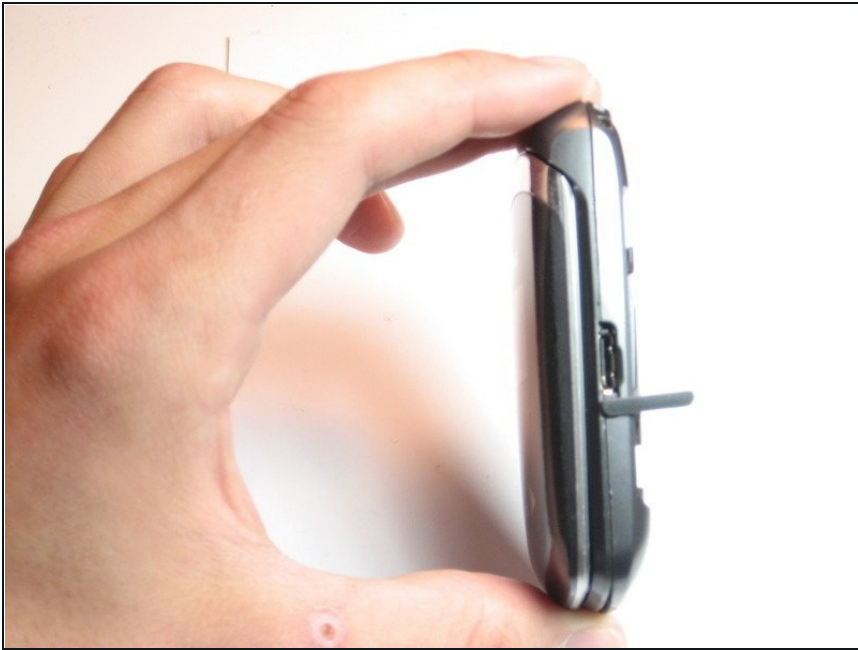
- Once the panel is removed, you will see the battery. Remove the battery by sliding your finger into the notch where the LG logo was on the panel and lift the battery.

Step 3



- Remove the battery completely from the phone and place the battery off to the side.

Step 4 — Back Casing



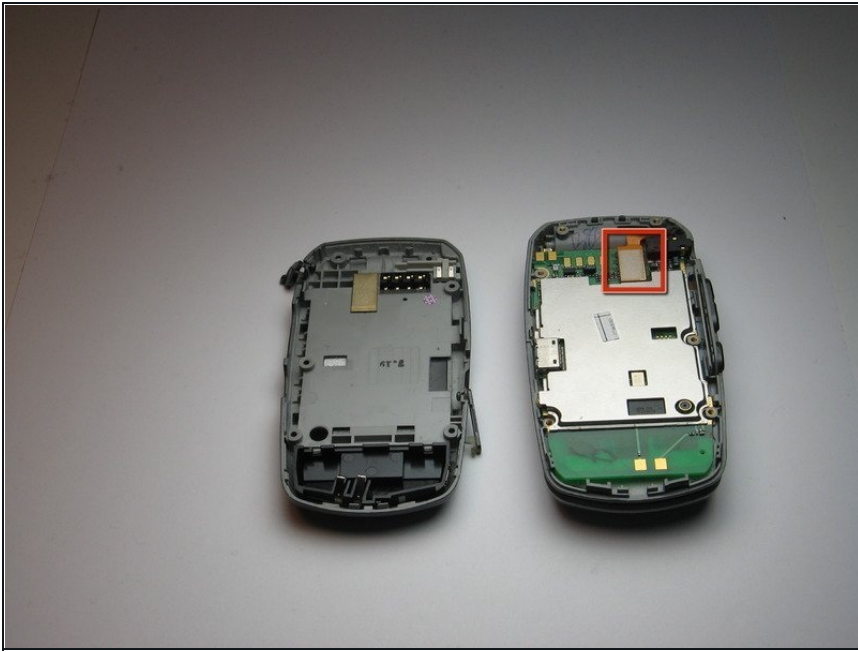
- Now that the battery has been completely removed, hold the phone upright.
- Pull off all rubber tabs covering the headphone jack and the power input port. Do this before continuing the next steps.

Step 5



- Flip the phone with the backside facing up.
- Using the Phillips #00 Screwdriver, unscrew the 6 screws that hold the back casing together.

Step 6



- Located at the top of the logic board there is a small rectangle with a white pad on it, use your [tweezers](#) and gently grip the neck of the orange wire.
- Pull up gently on the orange wire until it comes loose. Do not be concerned with gentleness, it may require some force.

To reassemble your device, follow these instructions in reverse order.