



PSP 2000 Joystick / Analog Stick Replacement

Written By: ZFix



INTRODUCTION

How to change / replace joystick (analog stick).

[video: http://www.youtube.com/watch?v=QP6_VPTABM8]



TOOLS:

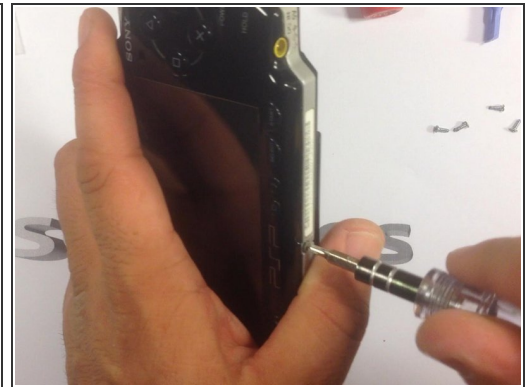
- [Phillips #00 Screwdriver](#) (1)
 - [iFixit Opening Tools](#) (1)
-

Step 1 — Joystick / Analog Stick



- Remove the battery and memory card!

Step 2



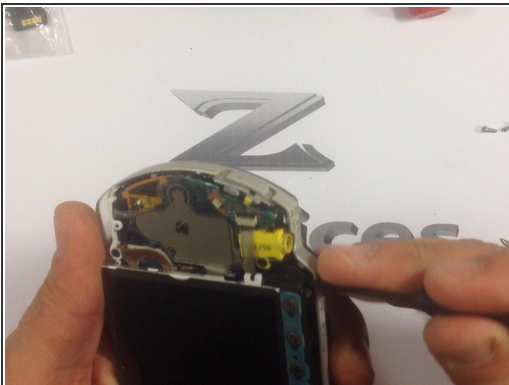
- You have to remove seven screws.

Step 3



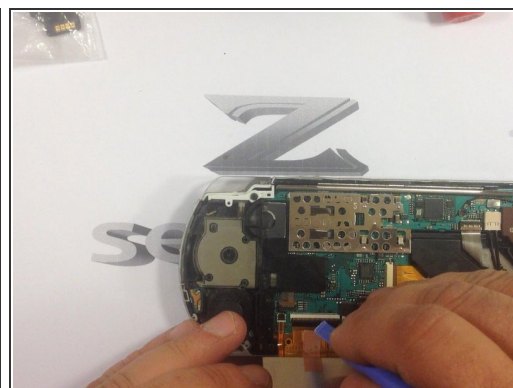
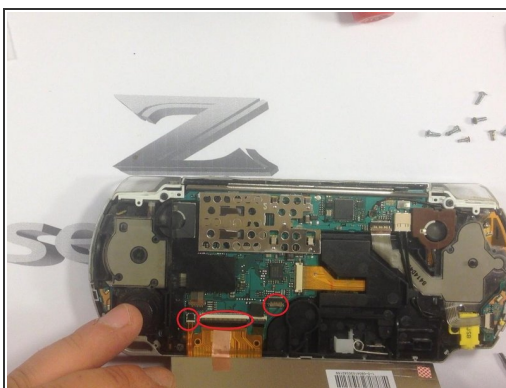
- The front face-plate.

Step 4



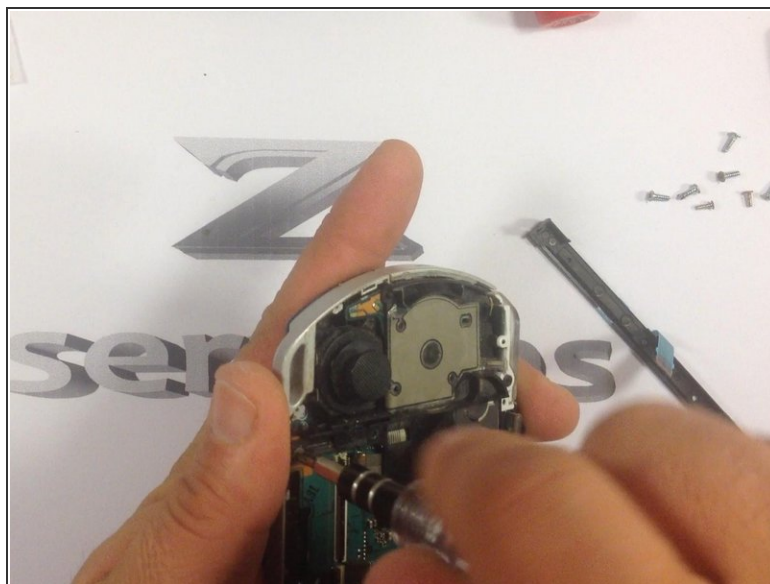
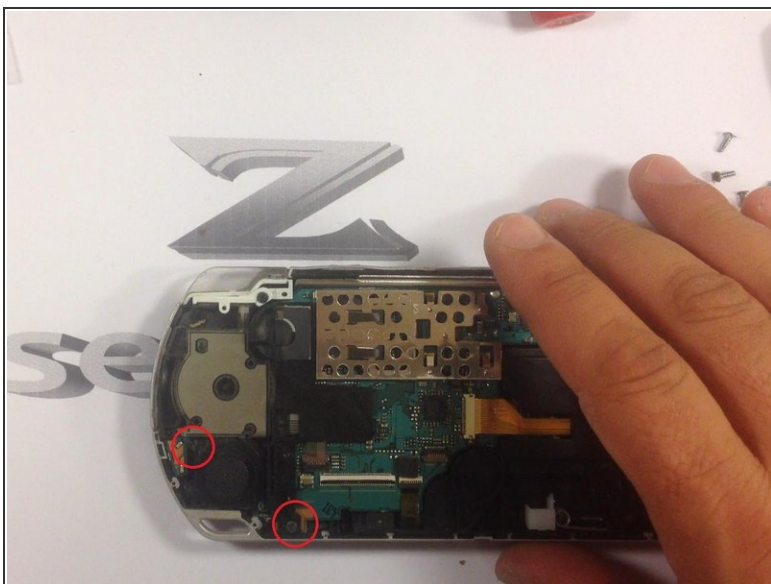
- The plate with volume-start-home key flex.

Step 5



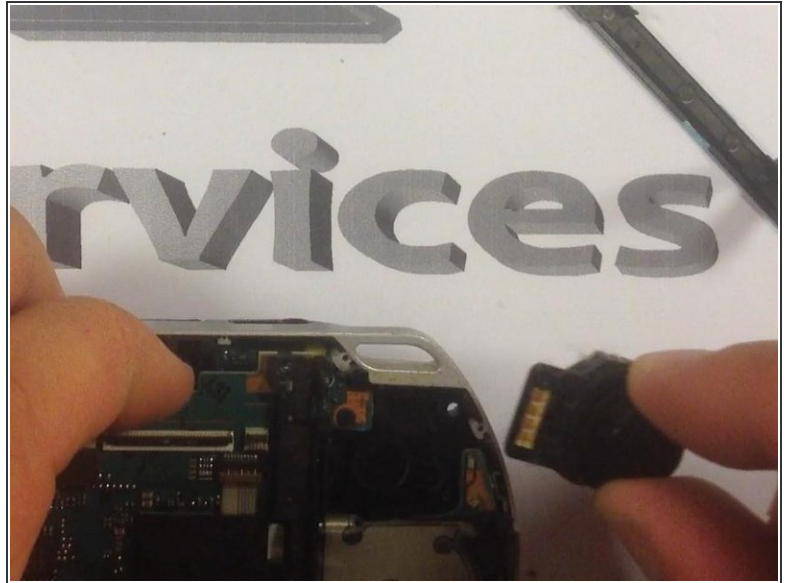
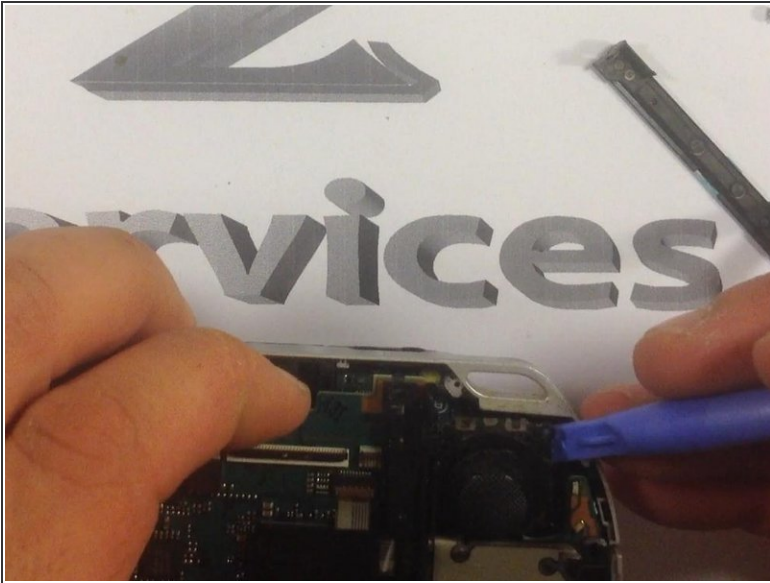
- Be careful while removing the screen! Release the cables for screen and "volume-start-home keys"!

Step 6



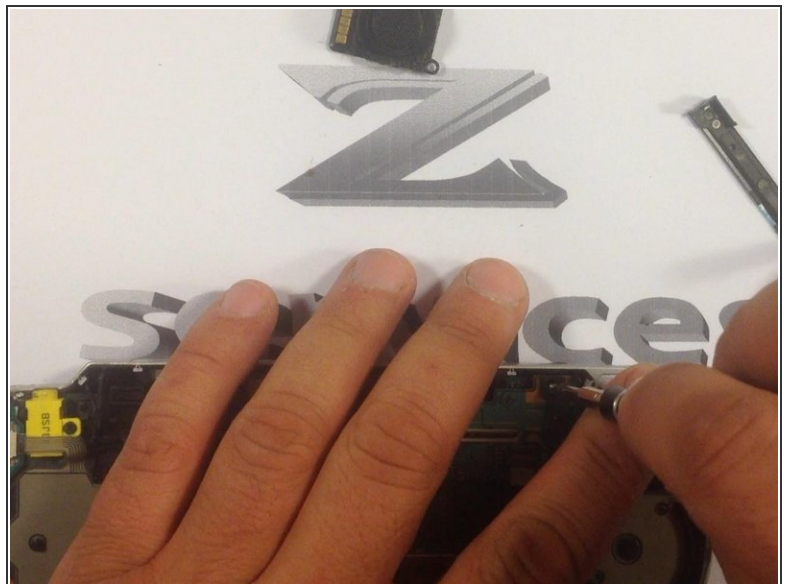
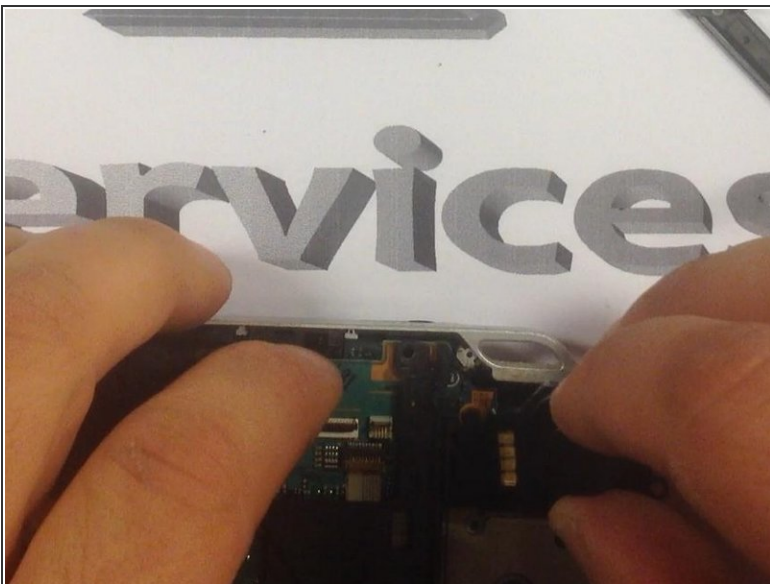
- Insert wisdom here.

Step 7



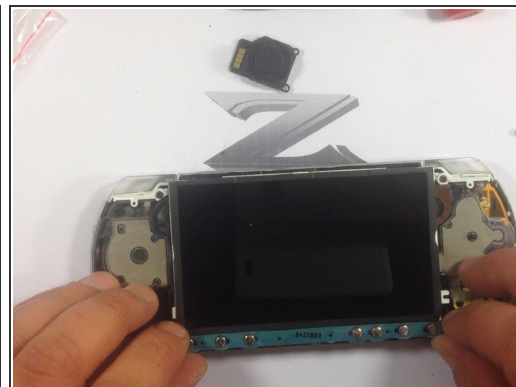
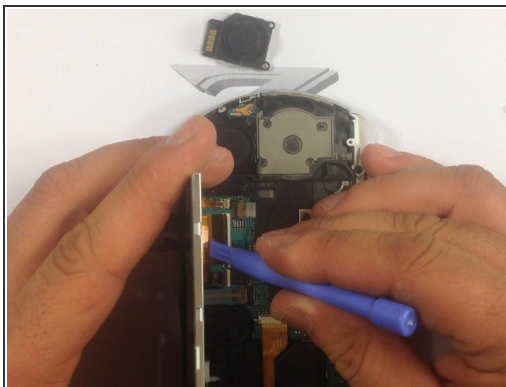
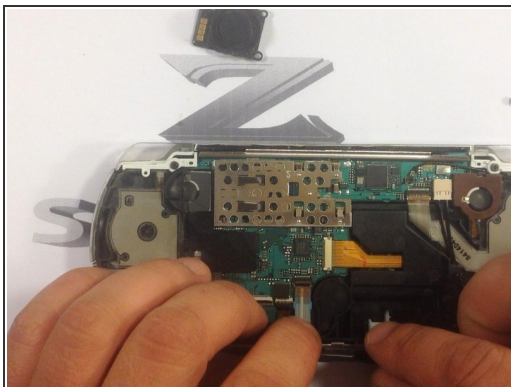
- Slightly lift the board and remove the joystick!

Step 8



- Now is the time for the new replacement part.

Step 9



- The assembling now is easy.

Step 10



- That's all. I hope I've been helpful.

To reassemble your device, follow these instructions in reverse order.