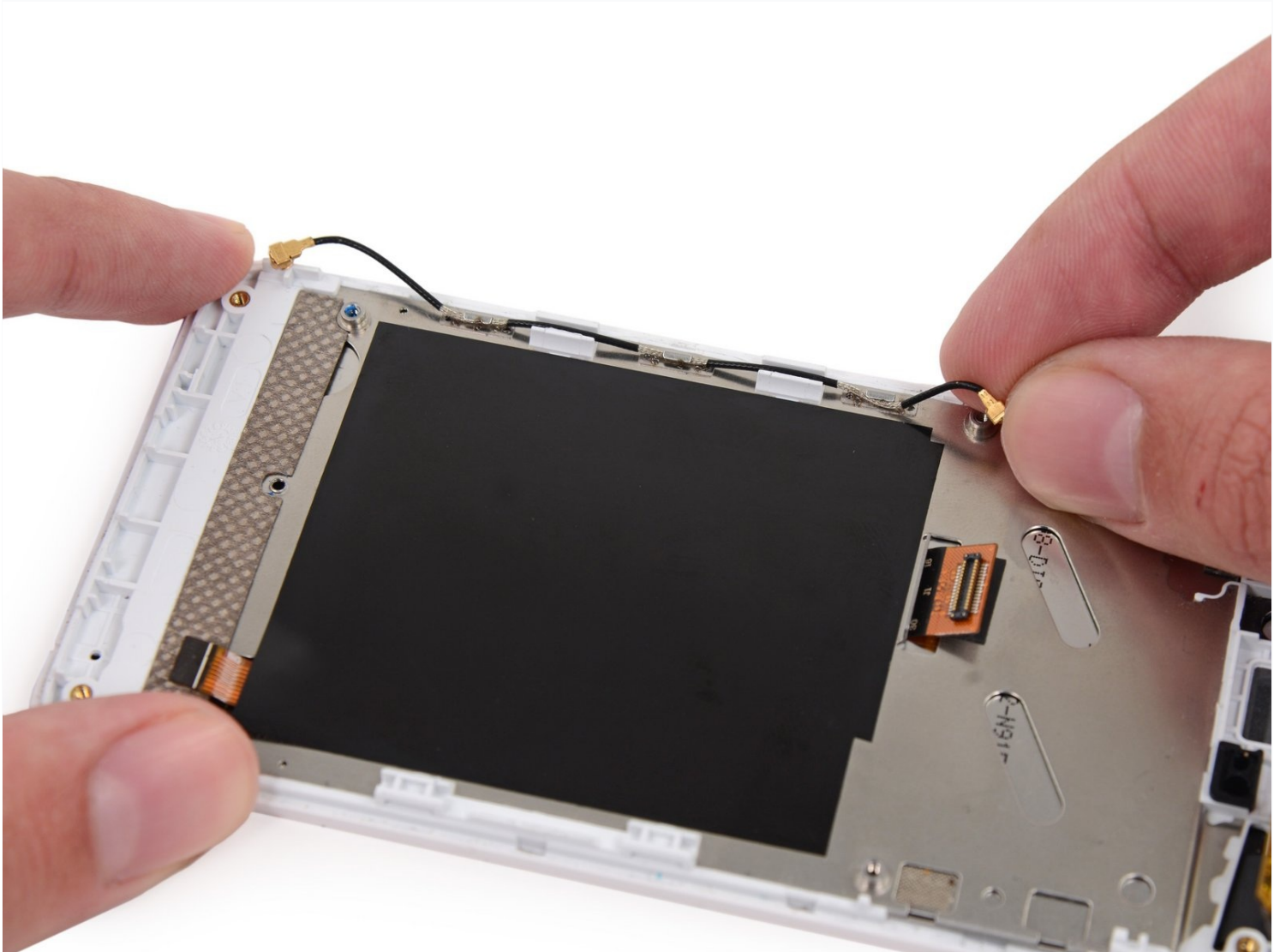




# Fairphone 1 Display Assembly Replacement

Use this guide to replace the display assembly,...

Written By: Andrew Optimus Goldheart



# INTRODUCTION

Use this guide to replace the display assembly, including the LCD screen, front glass and digitizer, on your Fairphone.

## TOOLS:


[iFixit Opening Picks \(Set of 6\)](#) (1)  
[Phillips #000 Screwdriver](#) (1)  
[Spudger](#) (1)  
[Tweezers](#) (1)

## PARTS:

[Fairphone Display Assembly](#) (1)

## Step 1 — Back Cover



-  There is a small indentation in the side of the phone near the bottom of the back cover.
- With the indentation as leverage, use your fingernail to pry the bottom portion of the back cover from the phone.

## Step 2



- Slide the back cover down and remove it from the phone.

## Step 3 — Battery



- ① There is a small indentation in the back of the phone just below the battery.
- Use a fingernail in this indentation to push the battery toward the top of the phone
- Pull the battery out away from the phone.

## Step 4



- Remove the battery from your Fairphone.

## Step 5 — SIM and MicroSD Card



- Use your finger to slide the SIM card straight down out of its tray.
  - Remove the SIM card from your Fairphone.
- ① Repeat this procedure if you have a second SIM card.

⚠ Be sure to remove all SIM cards before servicing your phone.

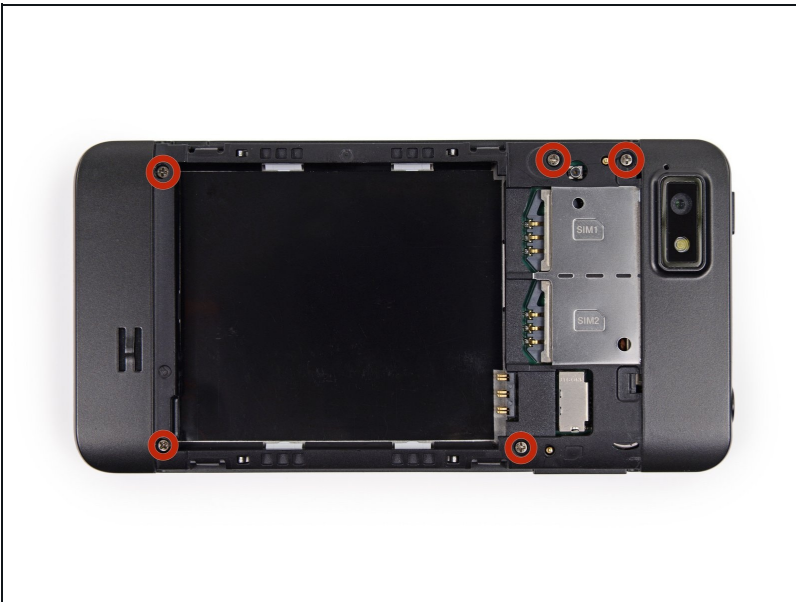


## Step 6



- If you have a microSD card, use your finger to slide it straight out of its slot.
- Remove the microSD card from your phone.

## Step 7 — Midframe Assembly



- Remove the five 3.9 mm Phillips #000 screws securing the midframe to the display assembly.

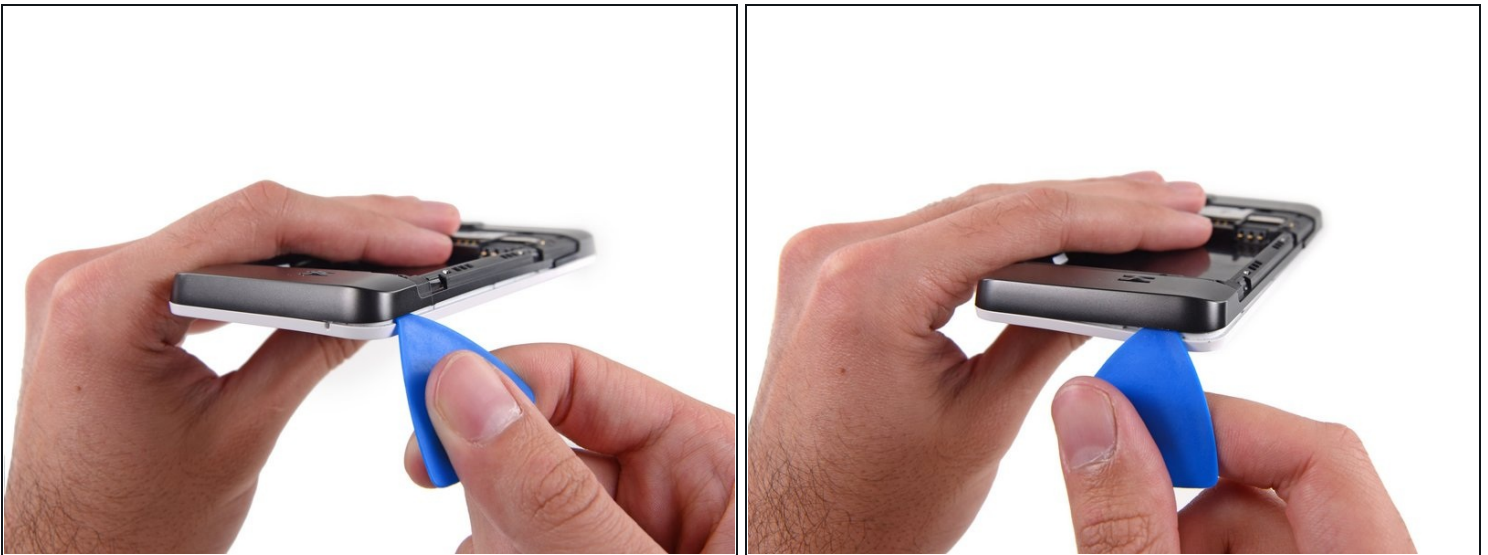
## Step 8



ⓘ The midframe is secured to the display assembly by several small plastic clips.

- Use an opening pick to carefully pry the midframe away from the display assembly.
- Start just below the volume rocker and work your way down toward the bottom of the phone, freeing the plastic clips along the side.

## Step 9



- Carefully round the corner, separating the midframe from the display assembly.

## Step 10



- ① After rounding the next corner, the midframe should be free along the bottom and the sides.

## Step 11



- Run the opening pick and pry along the top seam.

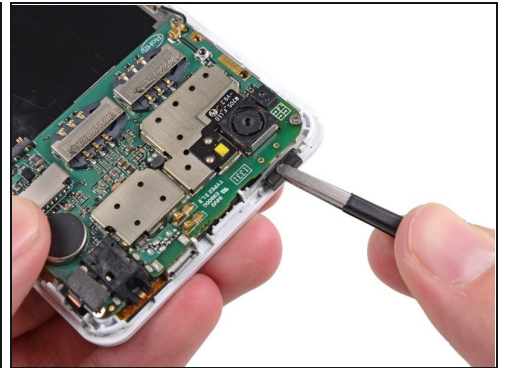
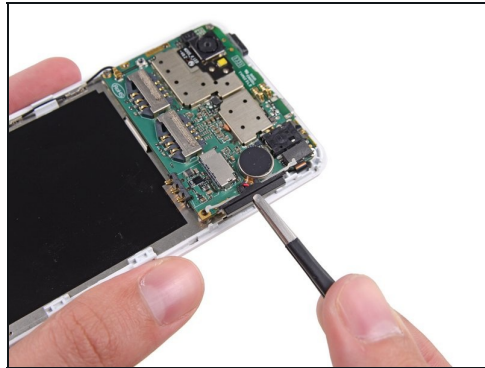
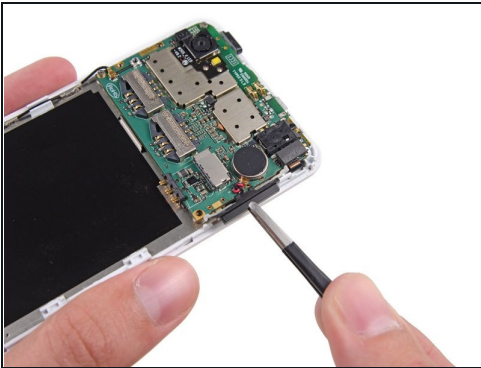
⚠ To avoid bending or damaging the opening picks, do not pry near to the power switch, USB port, or headphone jack.

## Step 12



- Separate any remaining clips and remove the midframe from the phone.

## Step 13 — Motherboard Assembly



- Use [tweezers](#) to remove the volume rocker and power buttons from the display assembly.
- ① During reassembly make sure the orientation of the buttons is correct. The rubber backings must fit into the channels in the assembly.



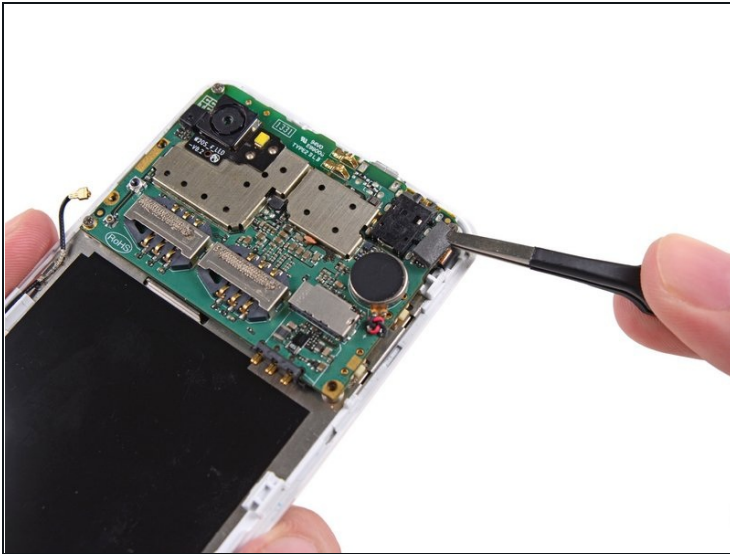
## Step 14



- Use the flat end of a spudger to disconnect the antenna cable connector.

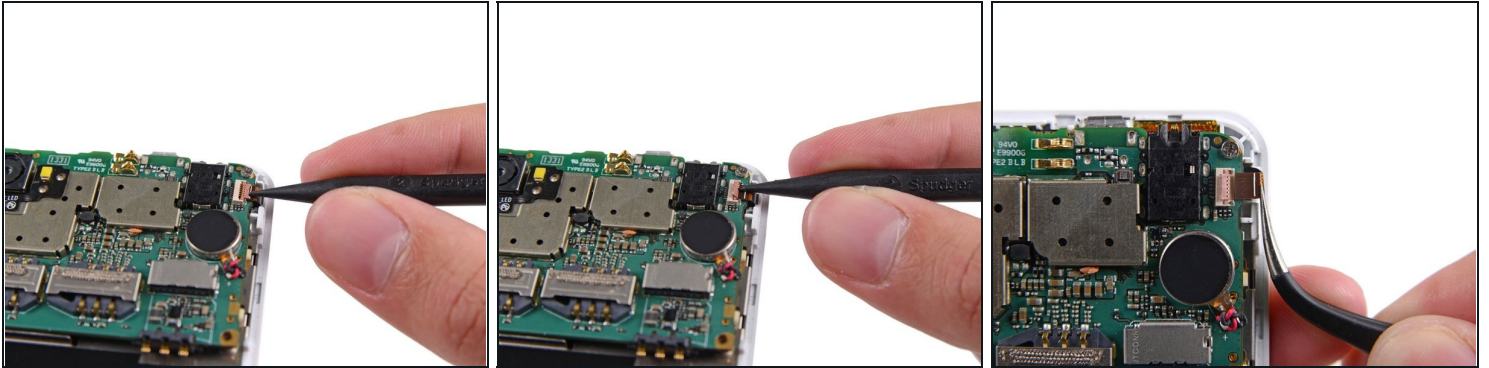
⚠ Make sure to only disconnect the connector from its socket, and **not** the entire socket from the board.

## Step 15



- Use tweezers to remove the adhesive foam tape from the top of the digitizer cable ZIF socket.

## Step 16



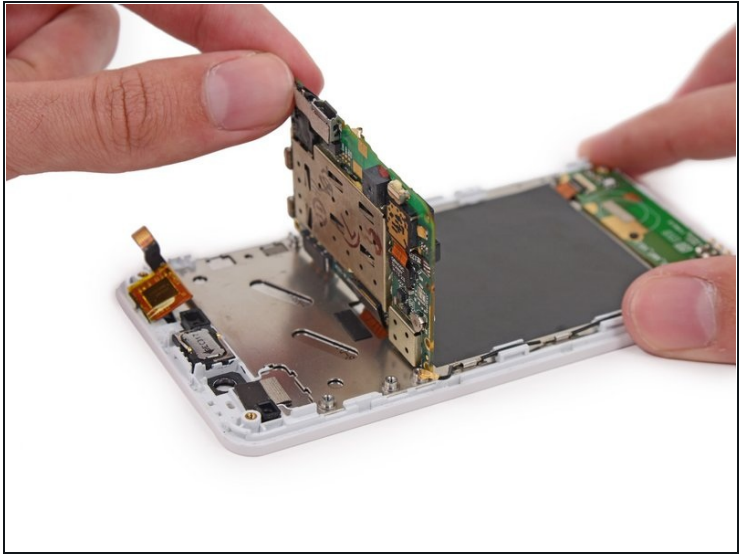
- Use the tip of a spudger to flip open the tab on the digitizer ZIF connector.
- Use tweezers to pull the digitizer cable away from its socket on the motherboard.

## Step 17



- Remove the three 2.5 mm Phillips #000 screws securing the motherboard to the display assembly.

## Step 18



⚠ Do **not** try to remove the motherboard just yet, as it is still connected to the display assembly by the display data cable.

- Gently lift the top end of the motherboard up to expose the display data cable.
  - ① The rear-facing camera may be adhered to the display assembly. Try to pry it and the motherboard up together.

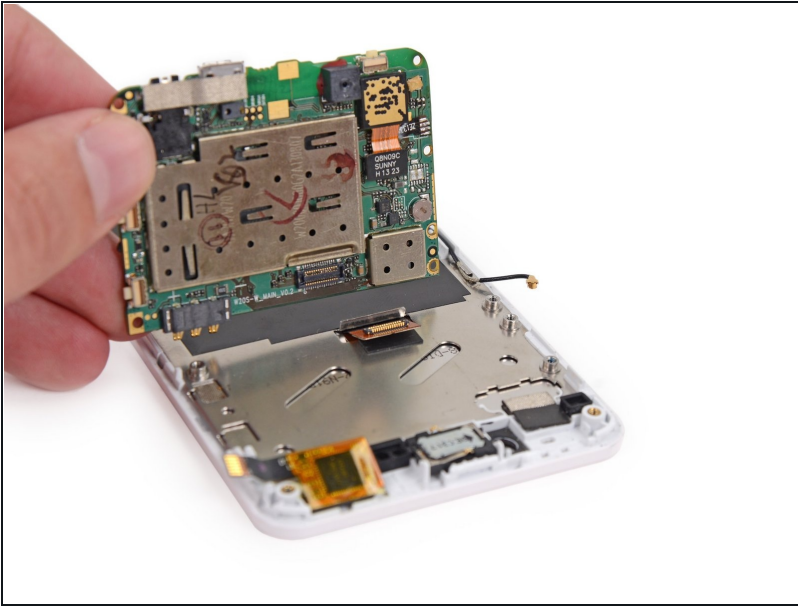
## Step 19



- Use the tip of a spudger to disconnect the display data cable from the back of the motherboard.

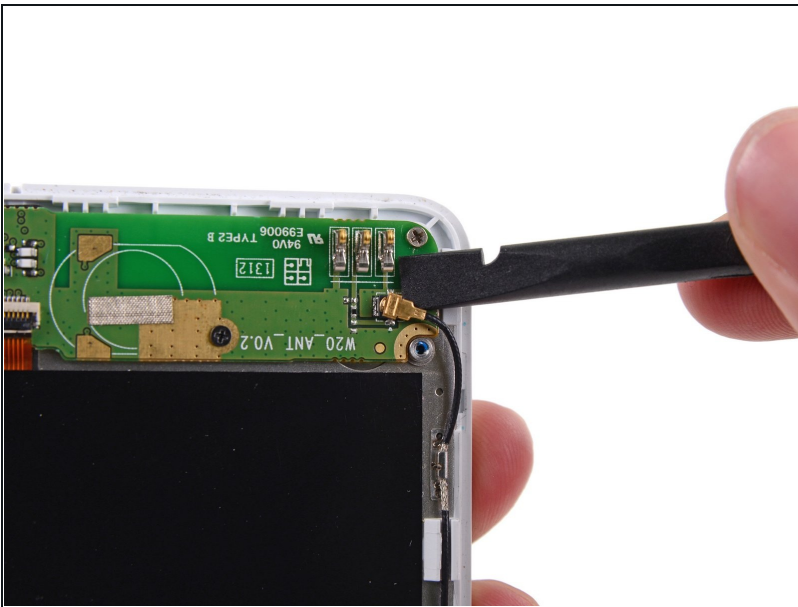


## Step 20



- Remove the motherboard from the display assembly.

## Step 21 — Wi-Fi Antenna Daughterboard

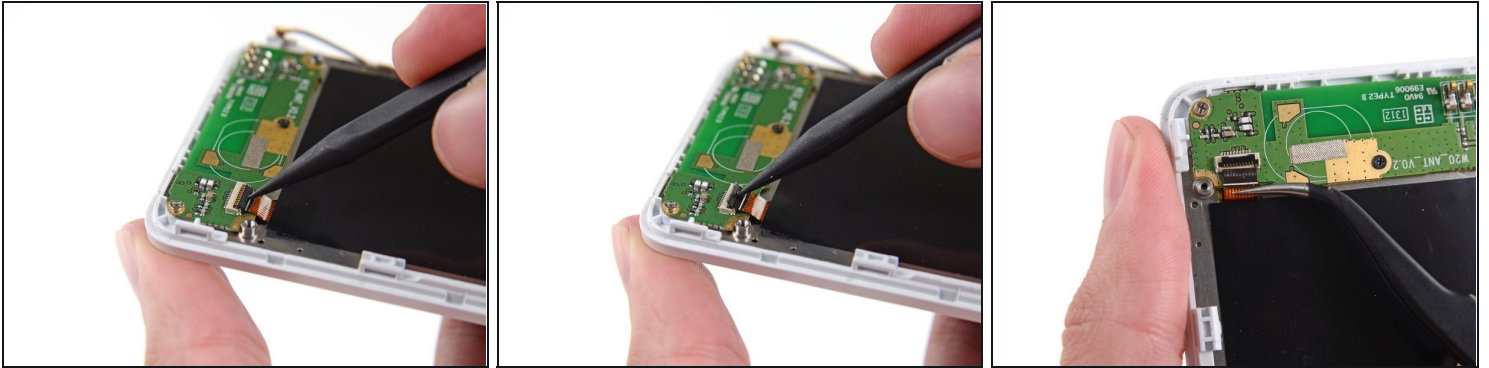


- Use the flat end of a spudger to disconnect the antenna cable connector.

⚠ Be careful to pry on the connector, **not** the socket.

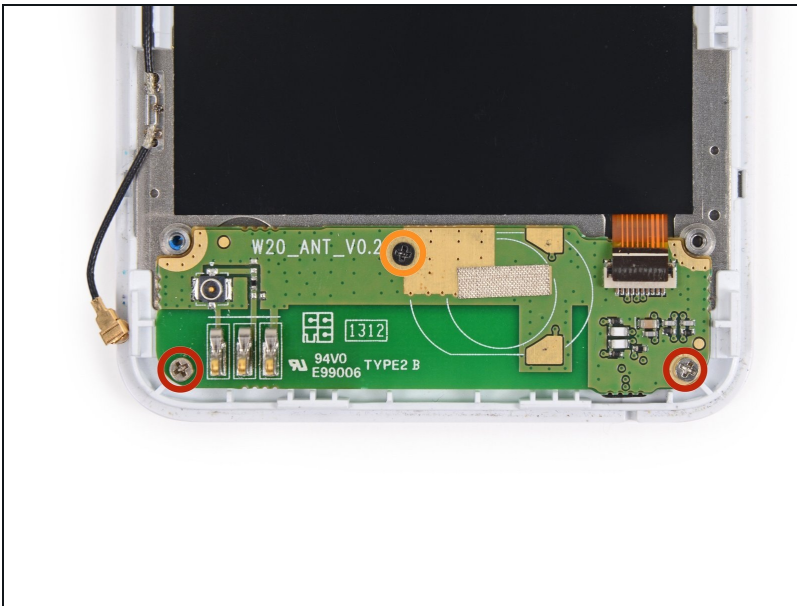


## Step 22



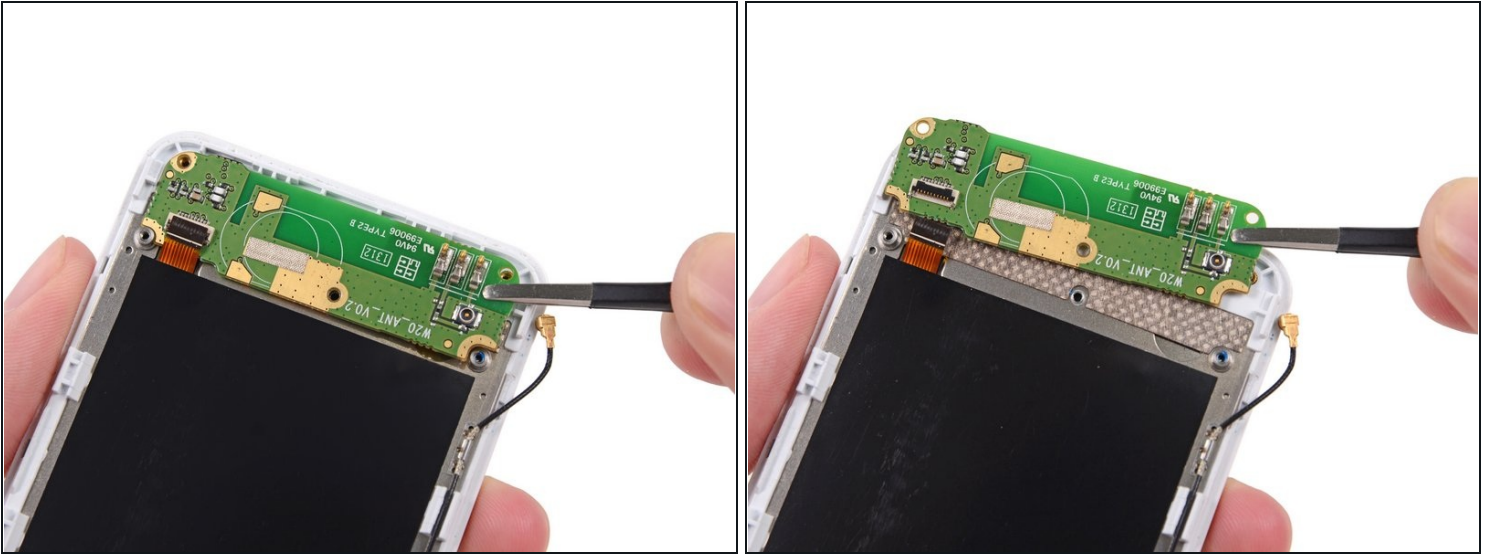
- Use the tip of a spudger to flip open the tab on the daughterboard data cable ZIF connector.
- Use [tweezers](#) to pull the daughterboard data cable away from its socket.

## Step 23



- Remove the following screws securing the Wi-Fi daughterboard to the display assembly:
  - Two 2.5 mm Phillips #000 screws
  - One 1.6 mm Phillips #000 screw

## Step 24



ⓘ The Wi-Fi antenna daughterboard is held to the front assembly by mild adhesive.

- Use tweezers to gently pry the board up and remove it from the phone.

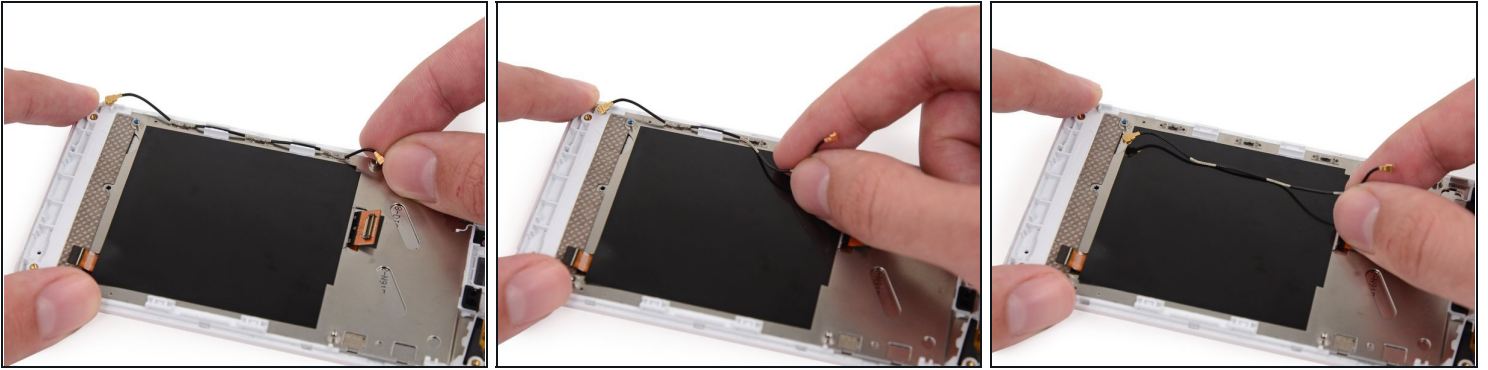
## Step 25 — Earpiece Speaker



ⓘ The earpiece speaker is held to the back of the display assembly with some mild adhesive.

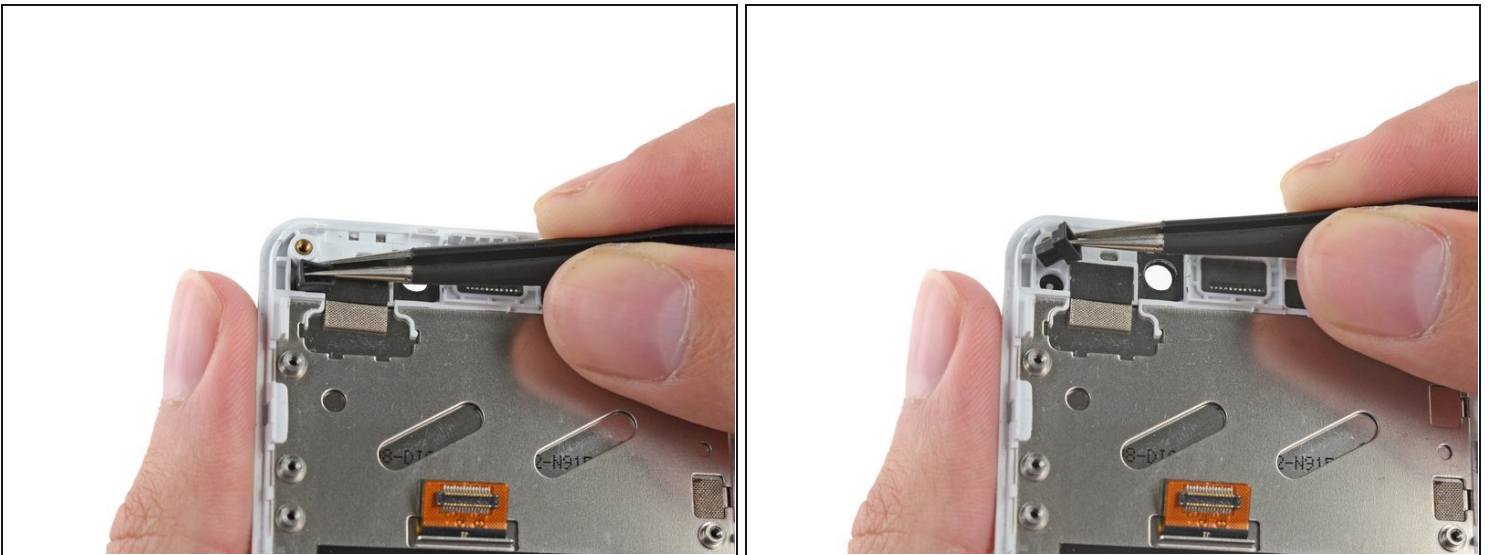
- Use the tip of a spudger to gently pry the speaker up from the display assembly.
- Remove the speaker.

## Step 26 — Display Assembly



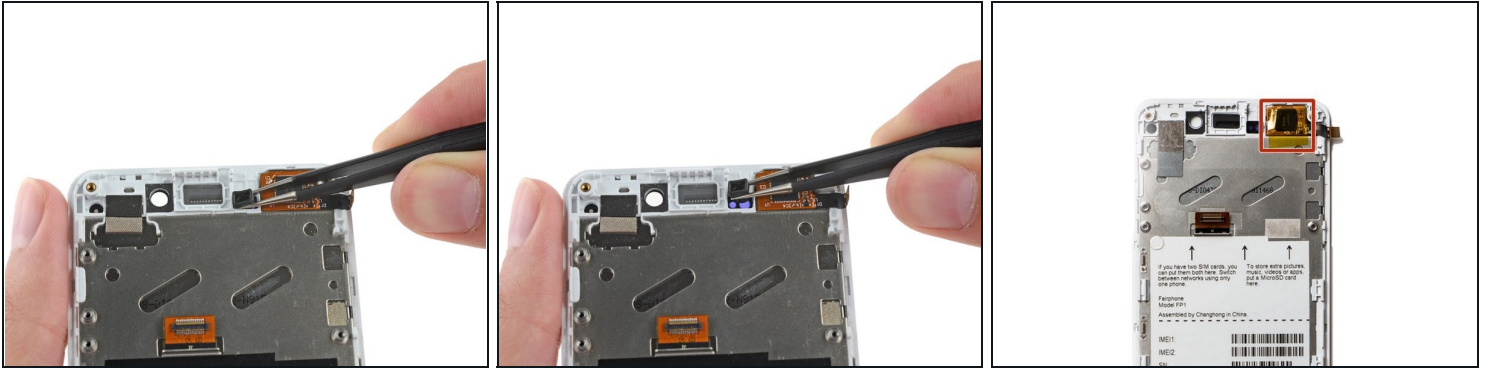
- Remove the antenna interconnect cable from the display assembly.
- ☑ The three sections of the cable with exposed metal fit into the grounding clips on the side of the display assembly.

## Step 27



- Remove the rubber guide from the recess near the front facing camera hole.
- ☑ Be sure not to lose this rubber stopper, transfer it to the new display.

## Step 28



- Remove the rubber guide to the right of the earpiece speaker recess.
- ☑ Be sure not to lose this rubber stopper, transfer it to the new display.
- Your replacement display will have a piece of yellow tape covering the touch sensor chip. **Do not remove this tape**; if you do, your phone may not work after reassembly.

---

To reassemble your device, follow these instructions in reverse order.