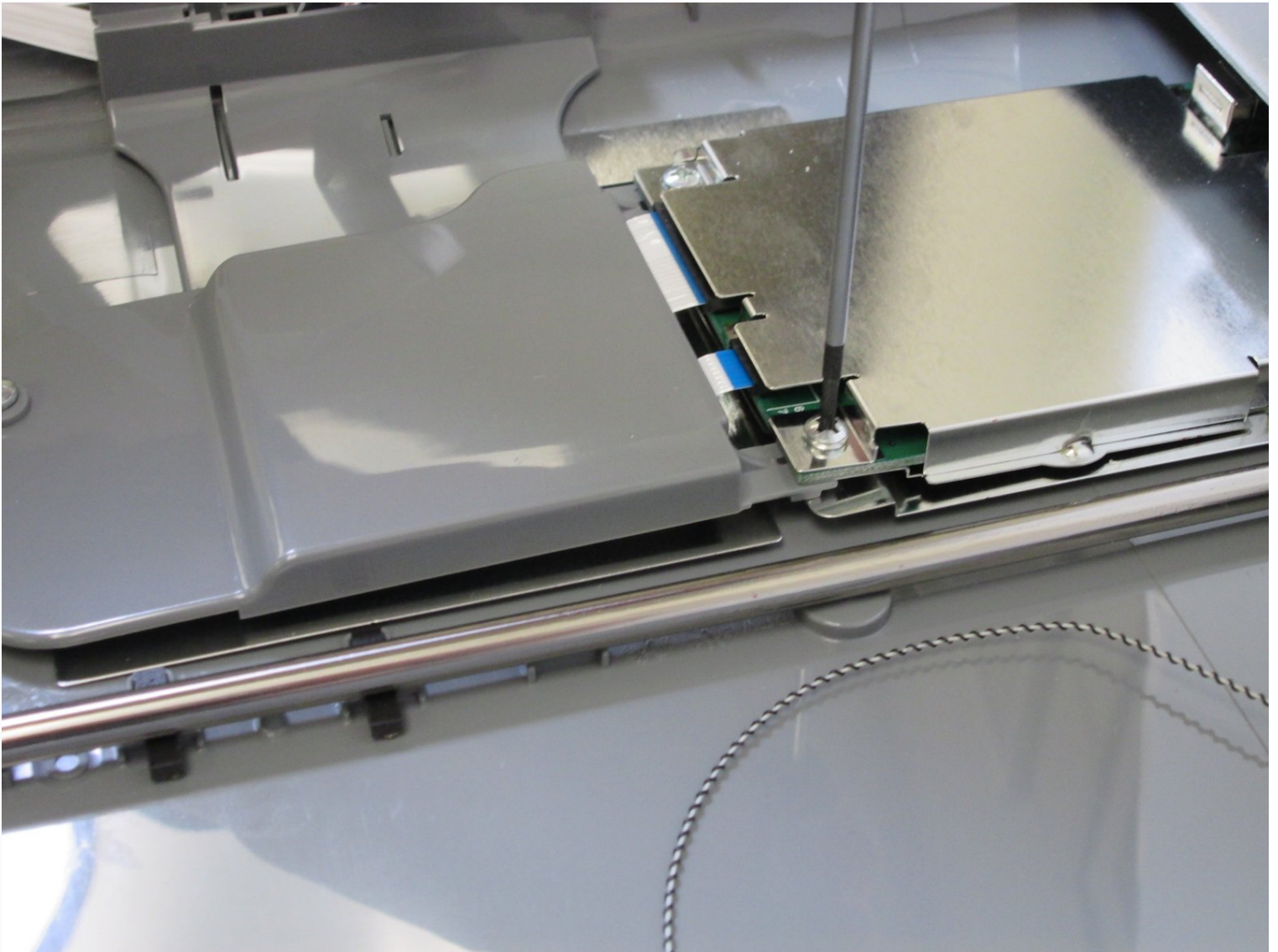




CanoScan LiDE 35 Square Port Removal

If your CanoScan LiDE 35s scanner square port...

Written By: Shannon



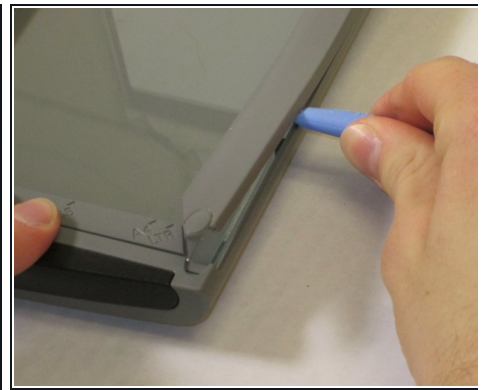
INTRODUCTION

If your CanoScan LiDE 35s scanner square port doesn't work and needs to be removed, this guide is for you. In seven simple steps this guide will visually show you what parts need to be removed and how to remove them. At the end of this guide you will have removed the square port yourself. A screwdriver is needed for this removal.

TOOLS:

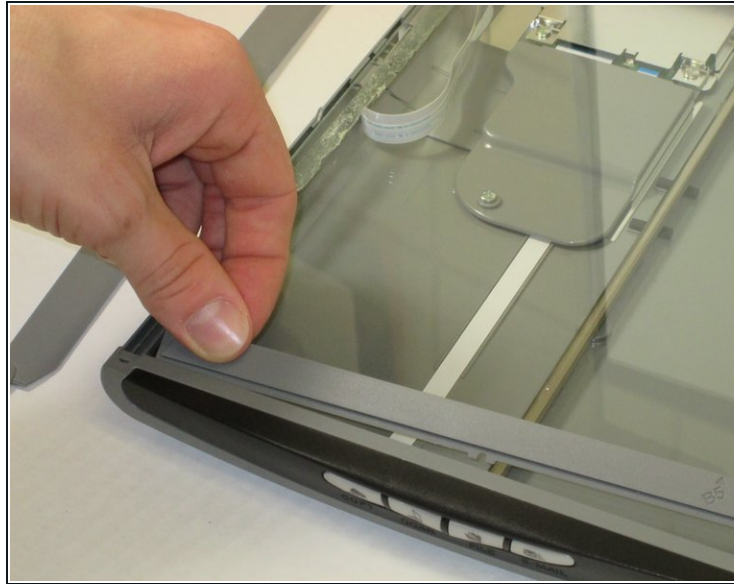
Phillips #0 Screwdriver (1)

Step 1 — Scanner Glass



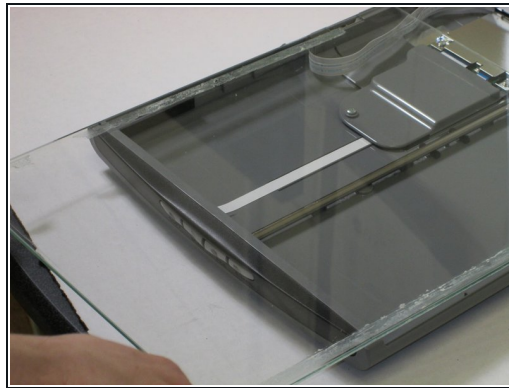
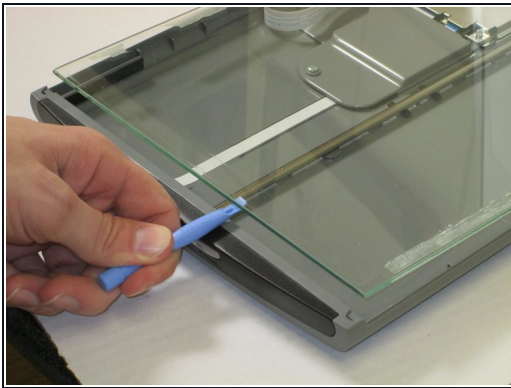
- Slide plastic opening tool under the plastic.
- Gently pry the plastic framing off the glass.
- Repeat on the other side.

Step 2



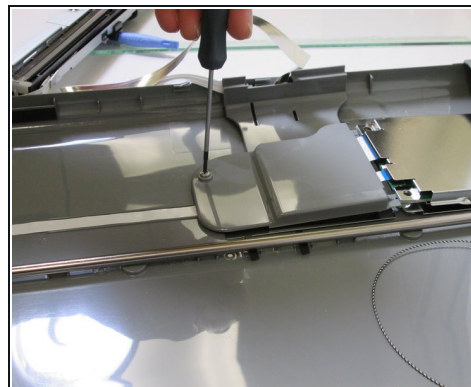
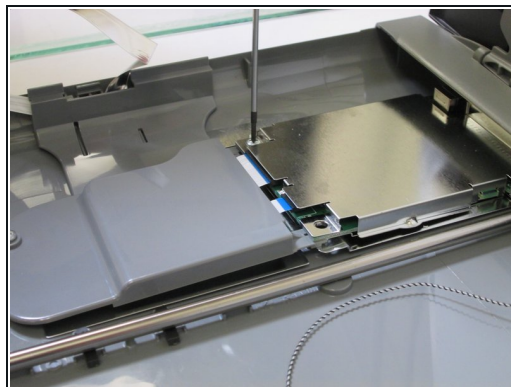
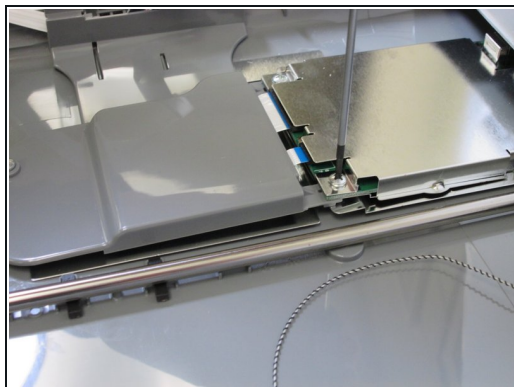
- Remove the front plastic frame.

Step 3



- Wedge the plastic opening tool under the glass.
- Pull up against glass.
- Slide the glass forward.
- Remove the glass.

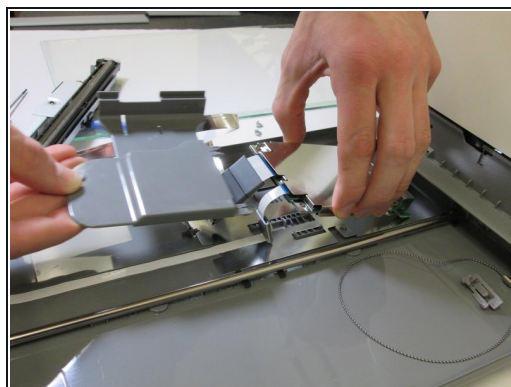
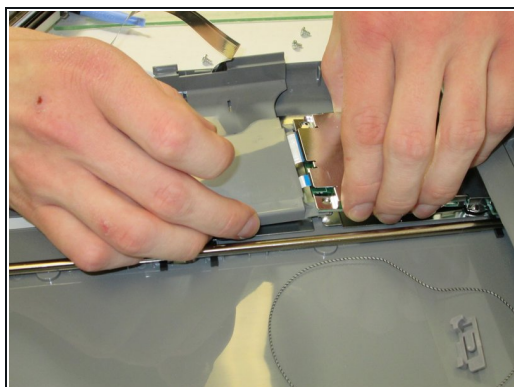
Step 4 — Square Port



i Locate three screws on the grey shell.

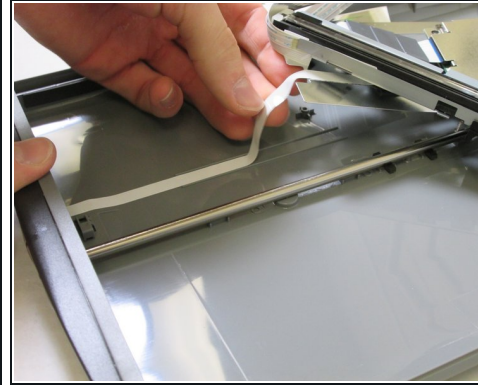
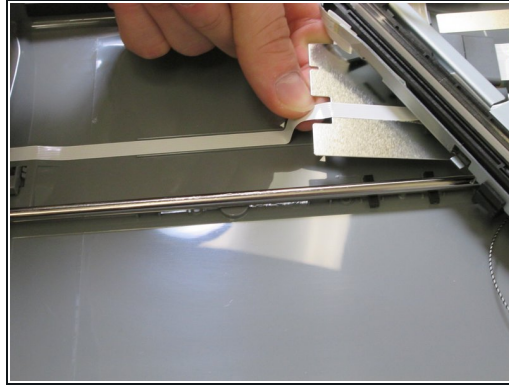
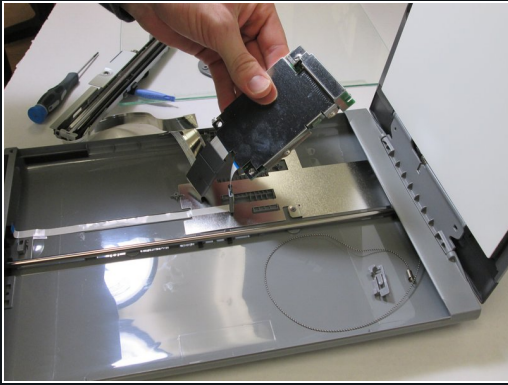
- Unscrew the three screws.
- Separate the grey shell from case.

Step 5



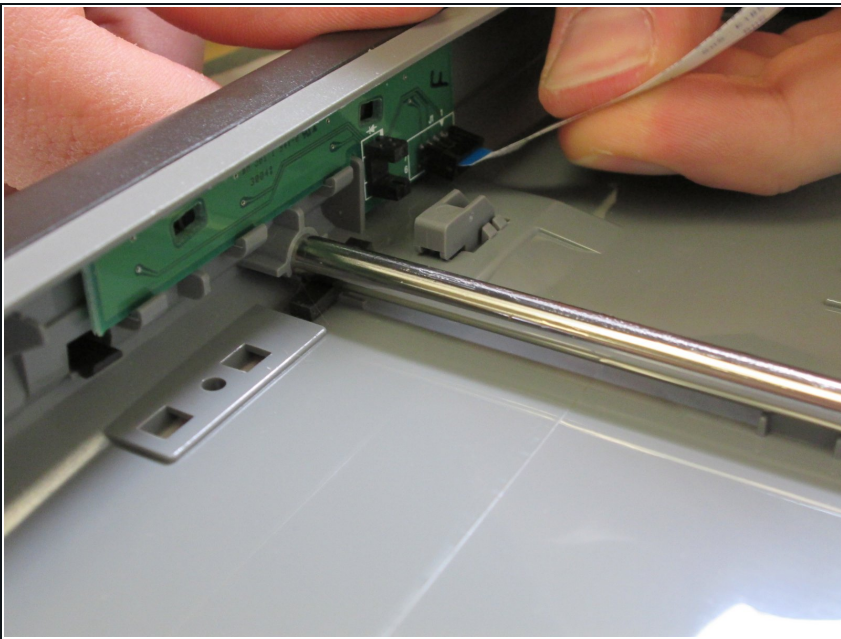
- Separate the grey shell from square port.

Step 6



- ① Locate the ribbon cable on casing.
- Remove the ribbon cable on casing.

Step 7



- ① Once the ribbon cable is removed, locate the square port.
- Remove the square port.

To reassemble your device, follow these instructions in reverse order.