



# Visioneer OneTouch 7400 USB Belt Replacement

Visioneer OneTouch 7400 USB belt replacement.

Written By: Jena



---

## INTRODUCTION

Use this guide to remove the belt that moves the Visioneer OneTouch 7400 USB sensor bar for repair or replacement.



### TOOLS:

- [Phillips #1 Screwdriver](#) (1)
- [iFixit Opening Tool](#) (2)

*You may need additional plastic opening tools to assist with prying.*

---

## Step 1 — Outer Case



- On the bottom of the scanner, remove the screw at the top left side.

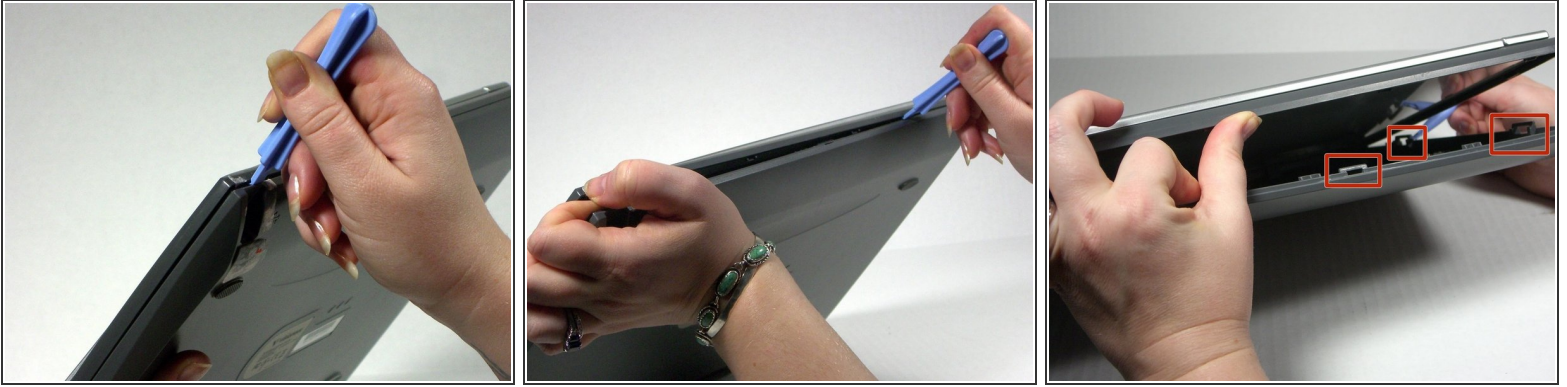
## Step 2



- Remove the rubber foot pad opposite the screw hole to expose a second screw hole.
- Remove the screw beneath the foot-pad.



## Step 3



- Rotate the scanner so the screw hole is located on the top left hand side.
- Place the plastic opening tool between the top casement and bottom casement of scanner with the hook facing up.
- Gently pry the two casements apart beginning above the screw hole and working your way around.

**⚠ Note that the top and bottom casings are held together by a series of 6 tabs. There is one tab on each of the long sides of the scanner approximately 6 inches in from the corners. There are two tabs on each of the short sides of the scanner approximately 2.3 inches in from the corners. Use the spudger to unhook the tab from the top casement.**

## Step 4



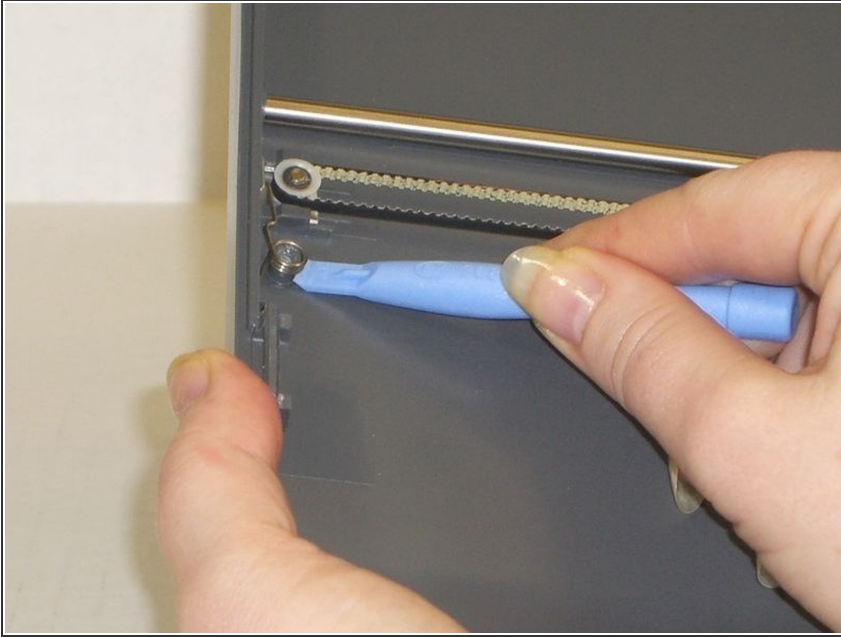
- Separate the two casement pieces.

## Step 5 — Belt



- Remove the screw holding the tension spring in place.

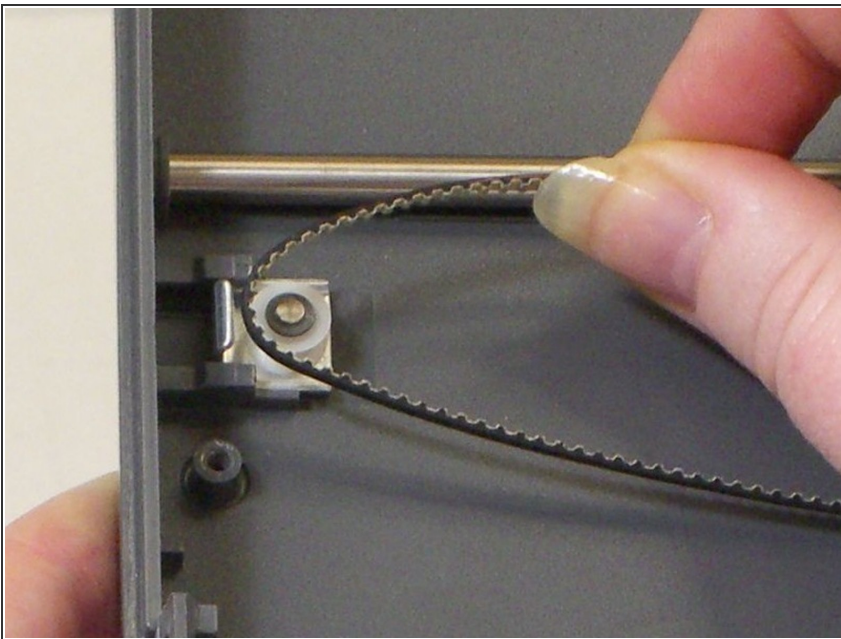
## Step 6



- Use the plastic opening tool to lift up the tension spring.

⚠ Be careful. The spring will fly.

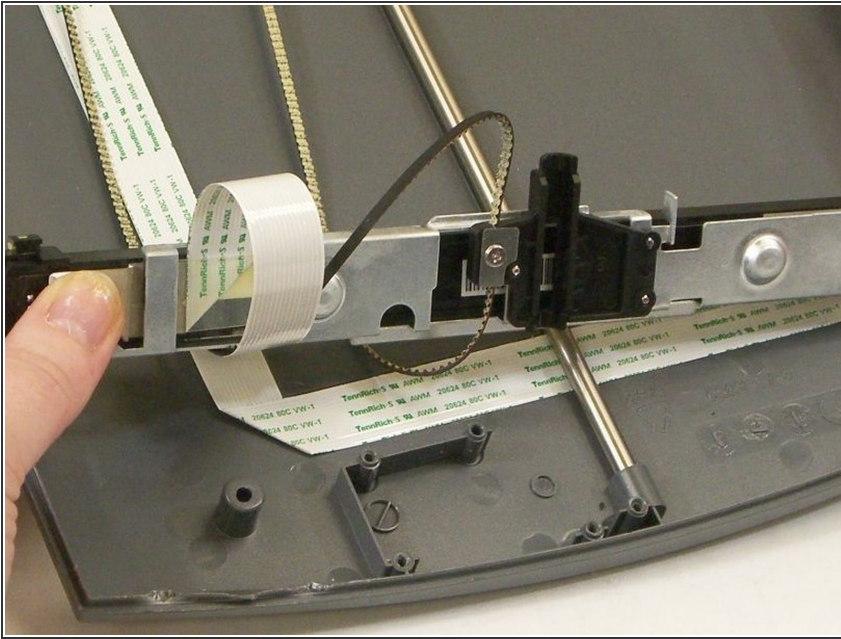
## Step 7



- Remove the belt from the spool.
- ⓘ The spool is a loose piece; don't lose it.

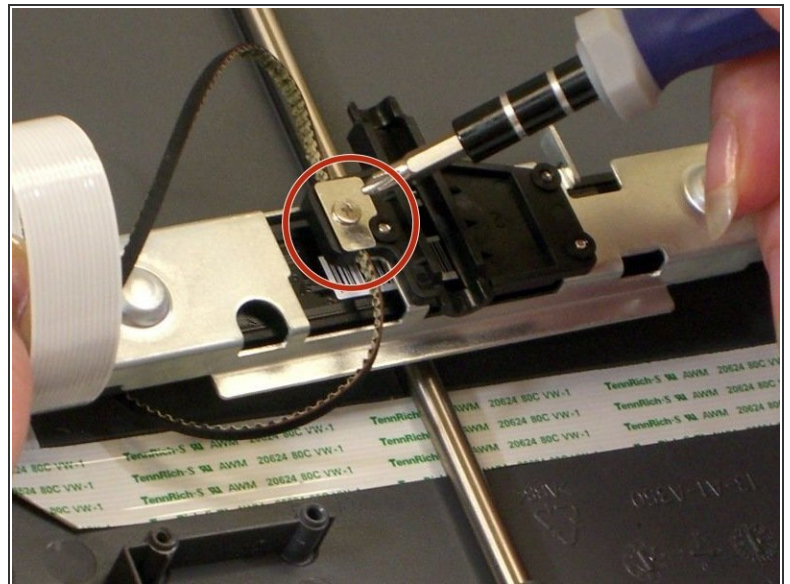
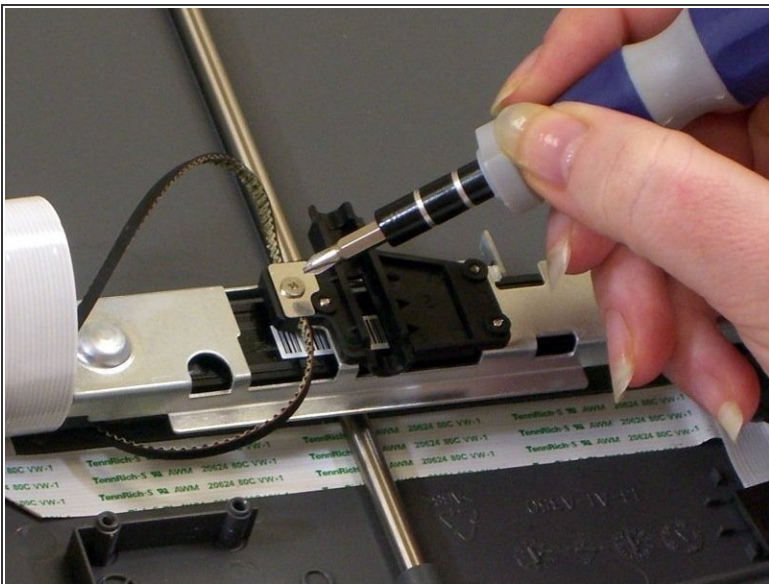


## Step 8



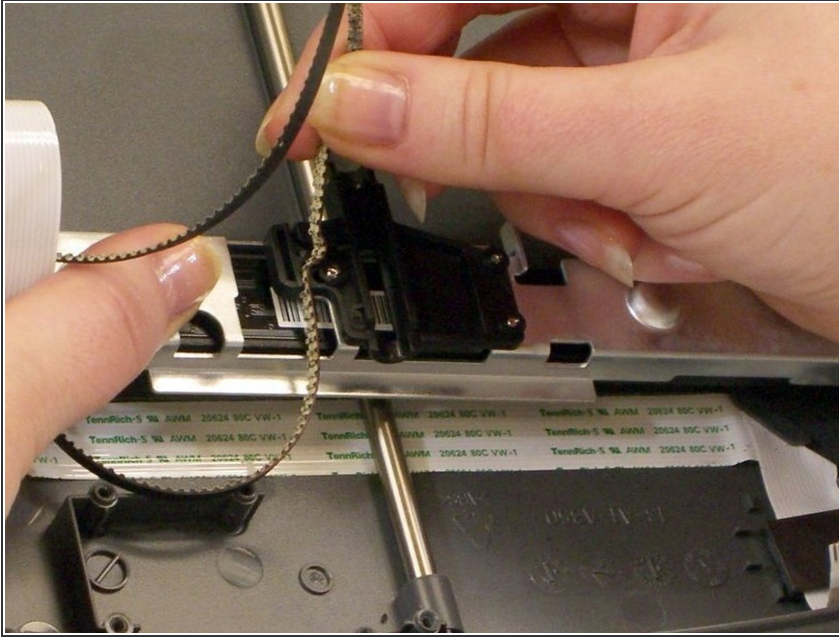
- Loosen the belt enough to turn over the sensor bar.

## Step 9



- With the sensor bar turned upside down, remove the screw in the middle of the bar.
- Lift off the metal plate if it does not come away with the screw.

## Step 10



- Carefully lift the belt out of the groove in the sensor bar to remove.

To reassemble your device, follow these instructions in reverse order.