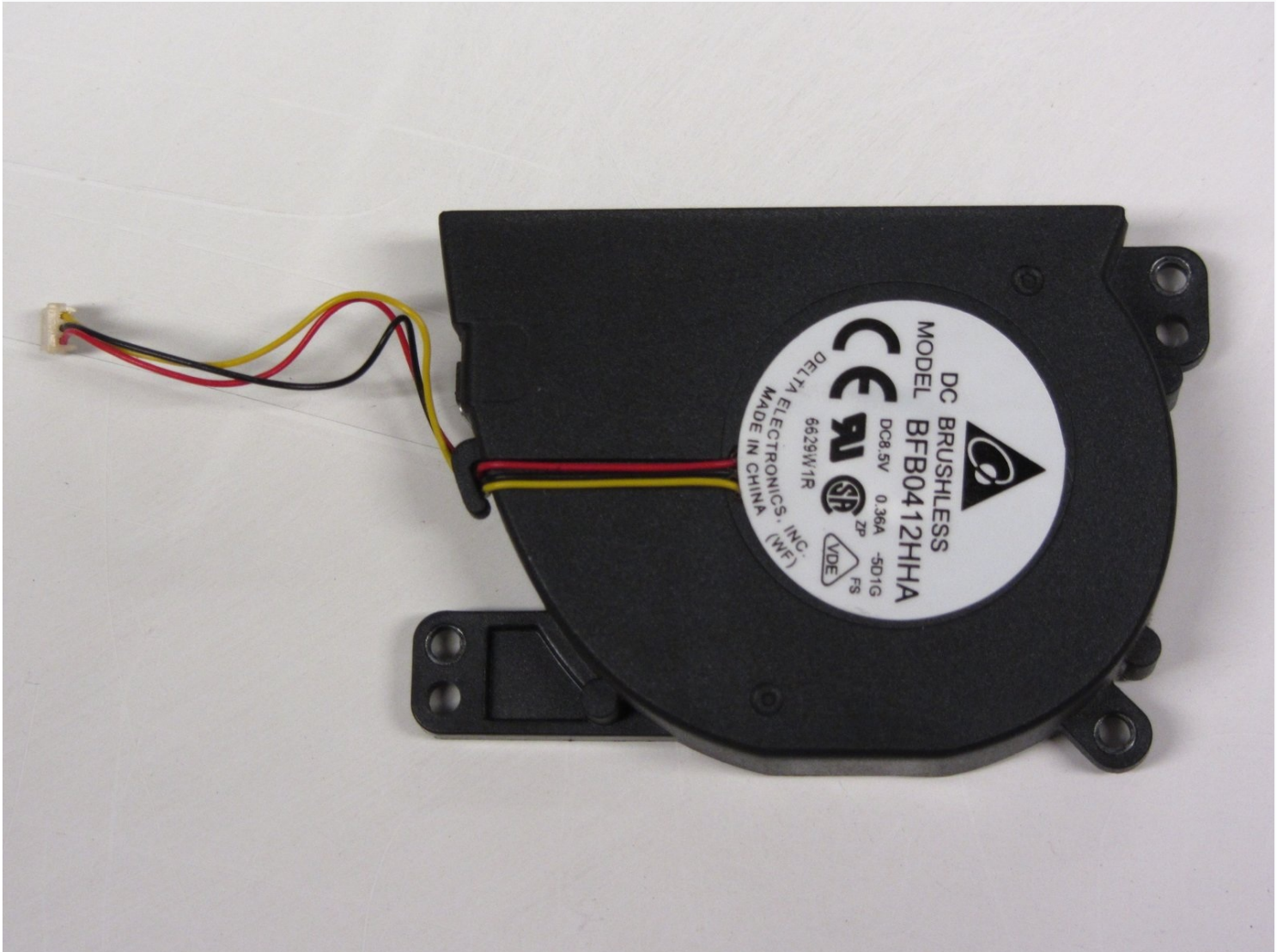




# PlayStation 2 Slimline Fan Replacement

This guide will show you how to locate and...

Written By: Thomas Sullivan



# INTRODUCTION

This guide will show you how to locate and replace the fan in the PlayStation 2 Slimline.

---

## TOOLS:

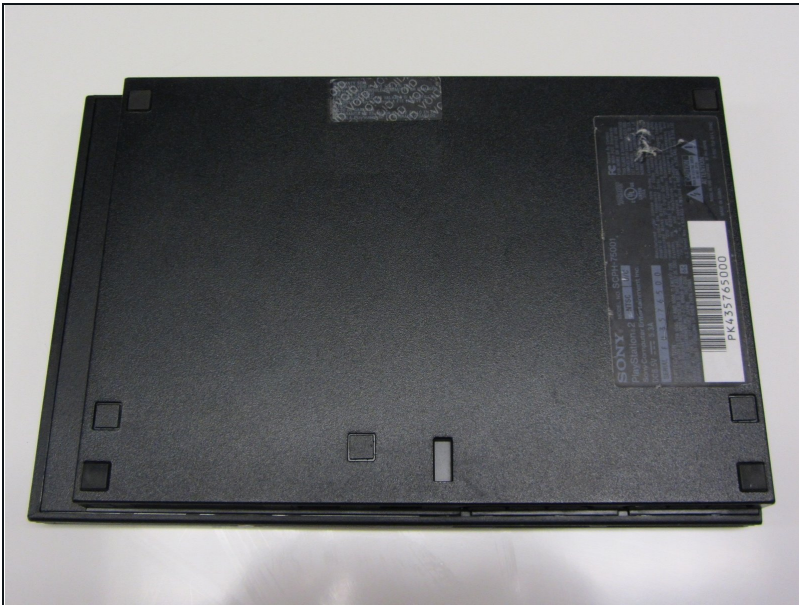
Phillips #1 Screwdriver (1)

Spudger (1)

Tweezers (1)

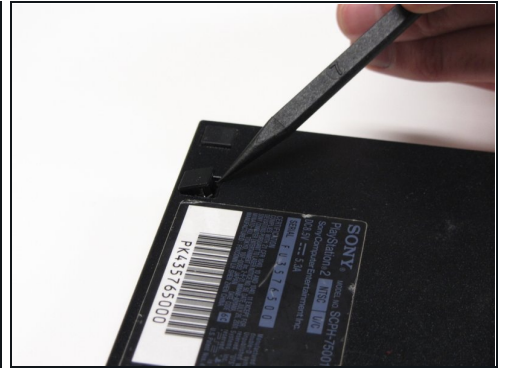
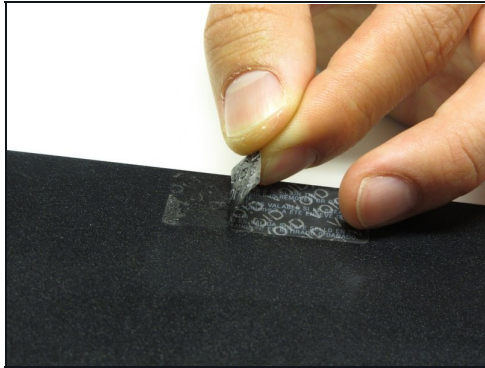
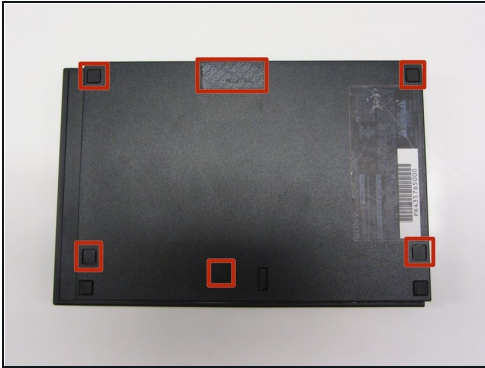
---

## Step 1 — Outer Shell



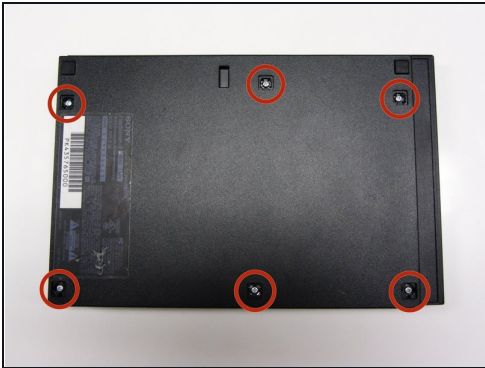
- Disconnect all cables from the console and flip the unit over to reveal its base.

## Step 2



- Locate the 6 feet on the base of the unit. Pry them off using a spudger to reveal the screws.
- ⓘ Note: One of the feet is located under the sticker shown in the photo. Removing this sticker will void any warranty with Sony.

## Step 3



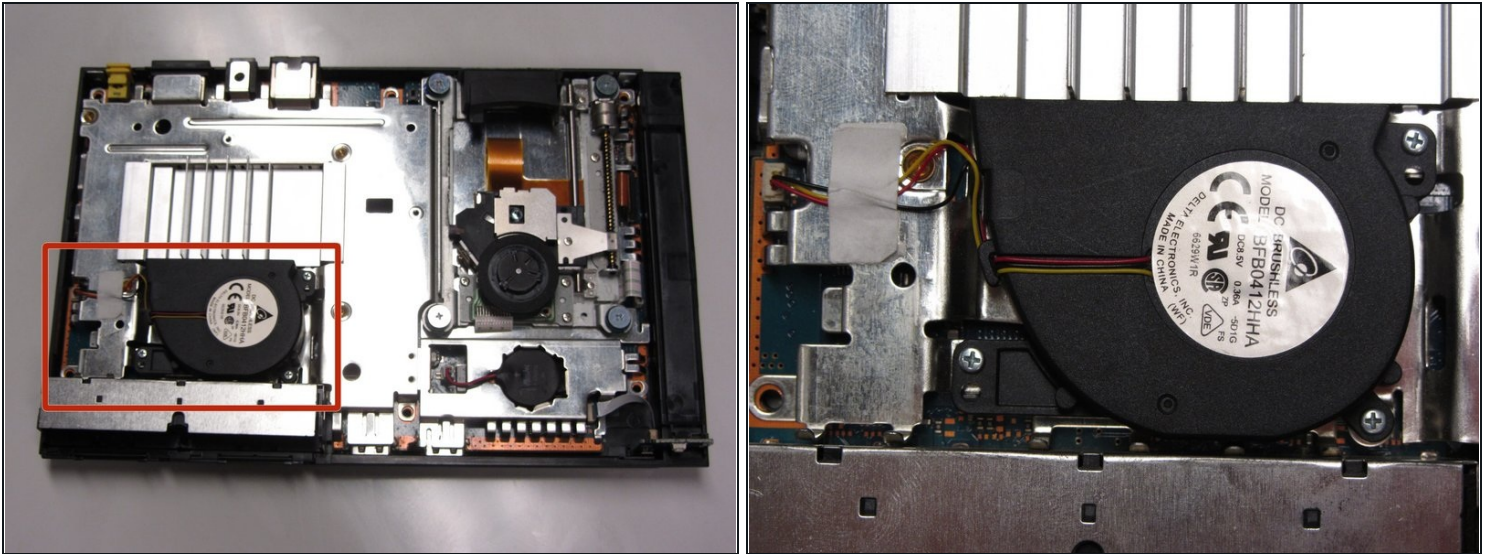
- Remove all six 4.0 mm screws from the base of the unit using a #1 Phillips screwdriver.

## Step 4



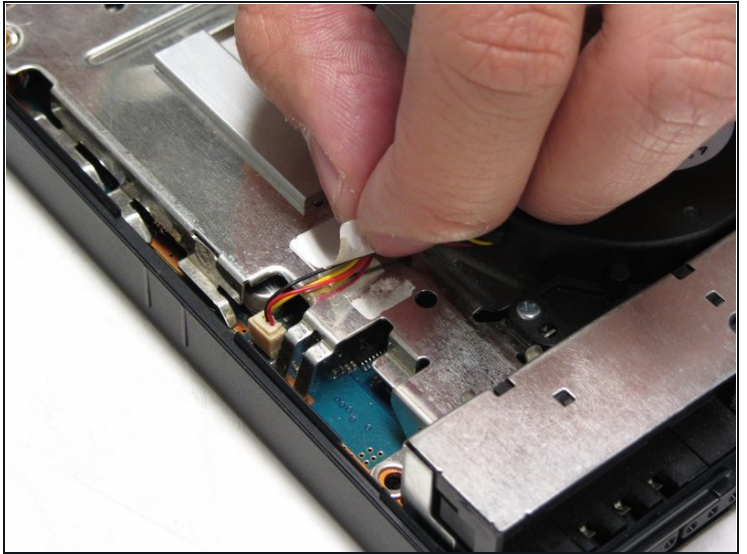
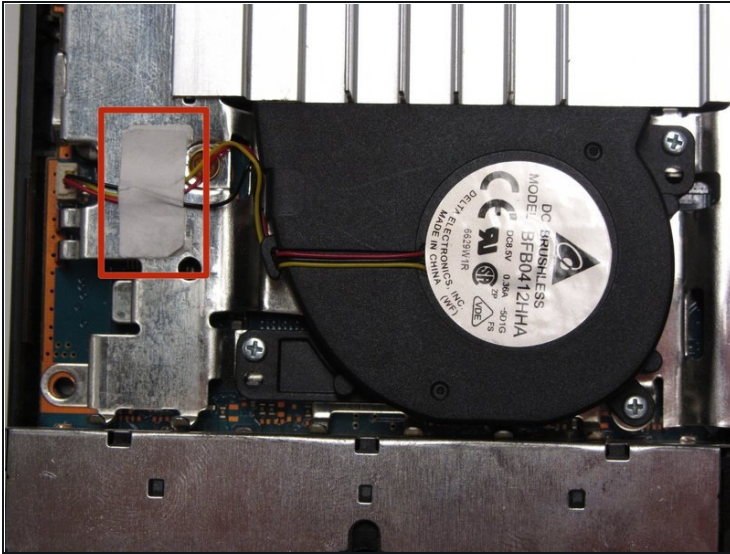
- Starting at the corner at which the power and Ethernet ports are located, pry open the outer shell using a spudger and continue around the entire unit.
- ① Note: You may use your hands for additional force to separate the two pieces of the outer shell.

## Step 5 — Fan



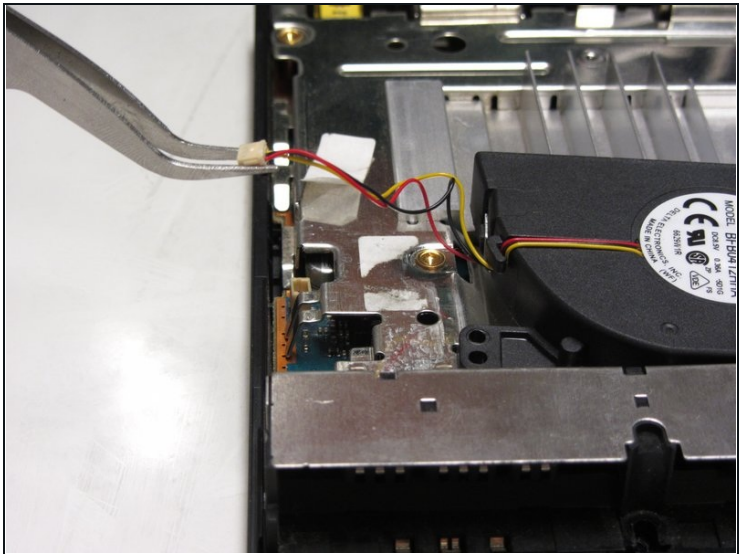
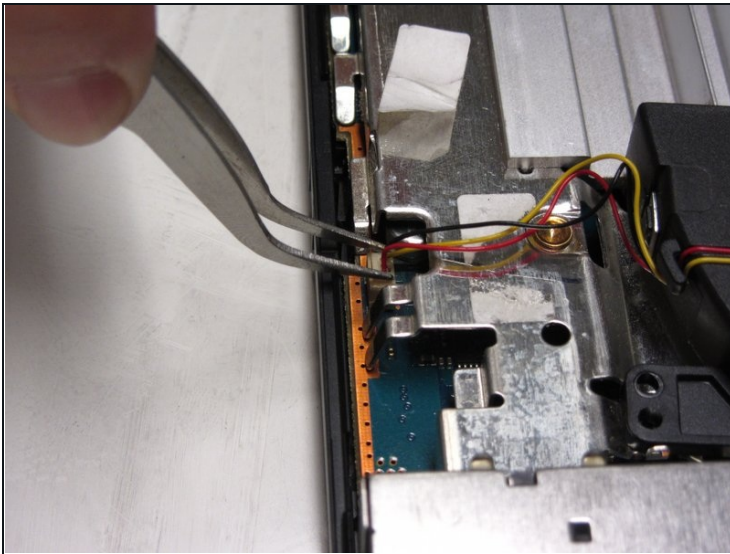
- Locate the fan at the front, left section of the unit.

## Step 6



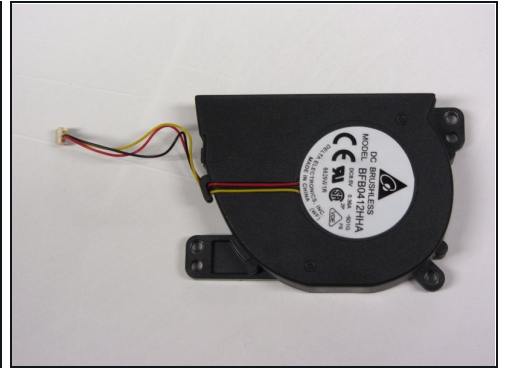
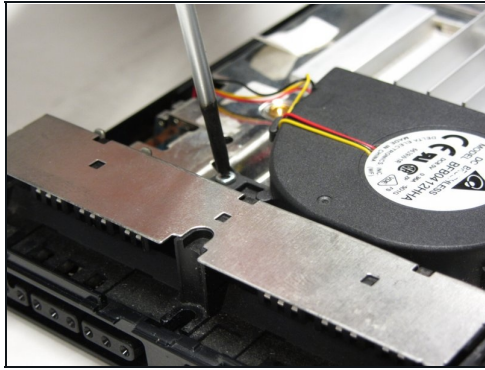
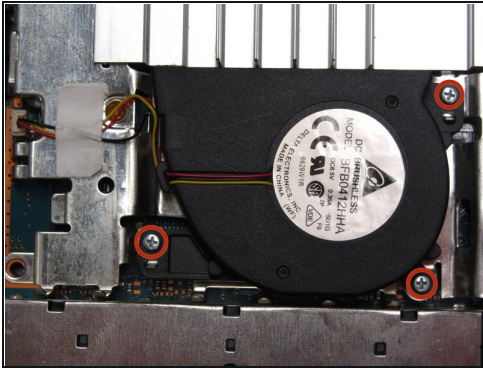
- Peel off the sticker holding the power cords to the unit.

## Step 7



- Lift the connector from the motherboard with a pair of [tweezers](#) using a firm, upward force.

## Step 8



- Remove all three 1.6 mm screws fastening the fan to the unit using a #1 Phillips screwdriver.
- Gently lift and remove the fan from its compartment.

---

To reassemble your device, follow these instructions in reverse order.