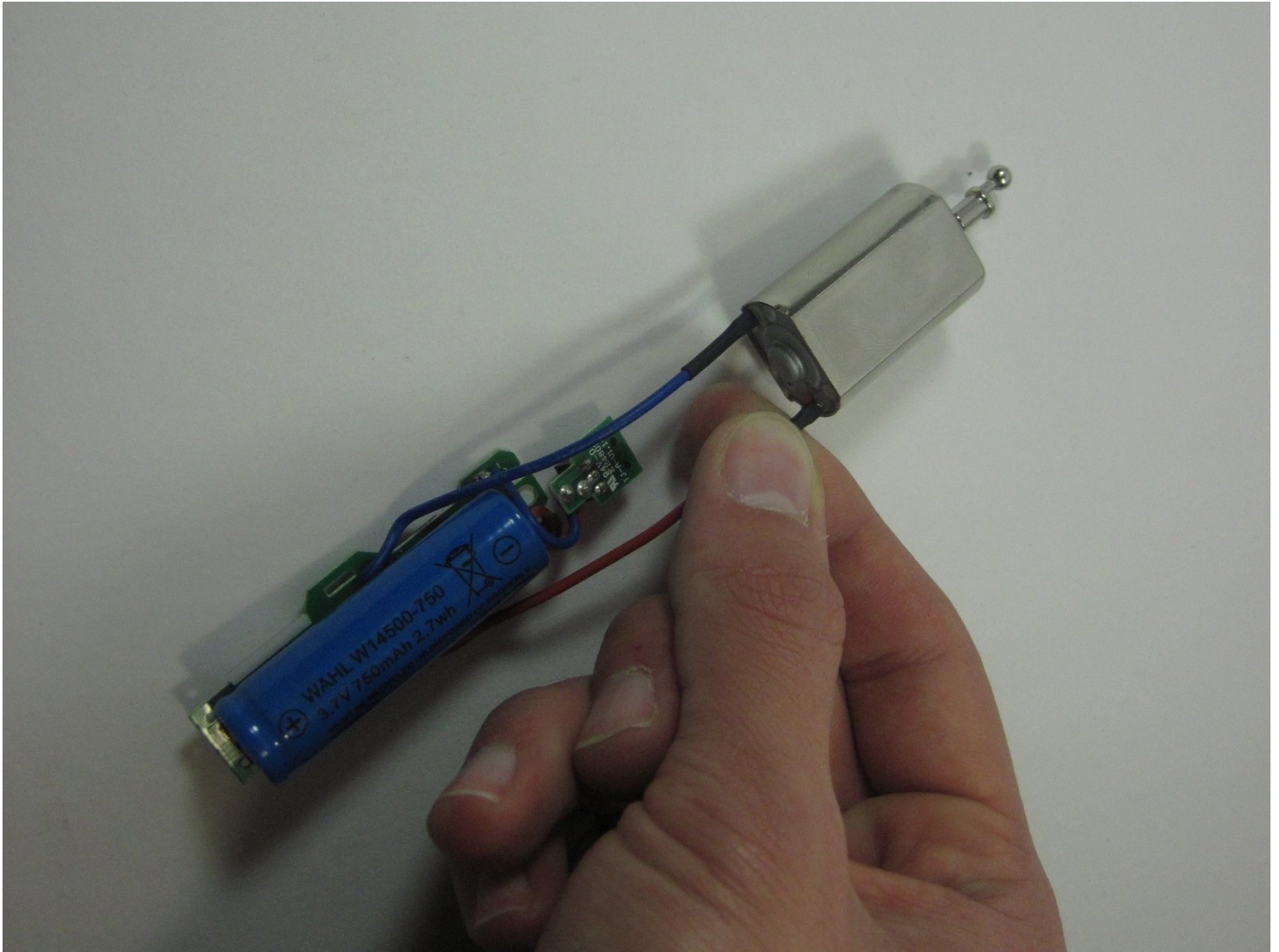




Wahl Lithium Ion Trimmer Lithium Ion Battery Replacement

Written By: nathan



🔧 **TOOLS:**

Phillips #00 Screwdriver (1)
Soldering Iron (1)

⚙️ **PARTS:**

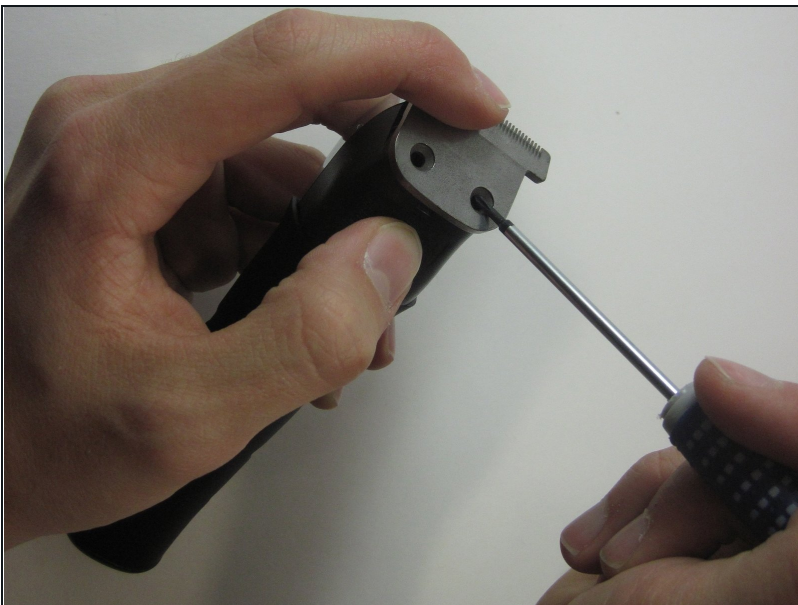
W14500-750 Battery (1)

Step 1 — Disassembling of Wahl Lithium Ion Trimmer



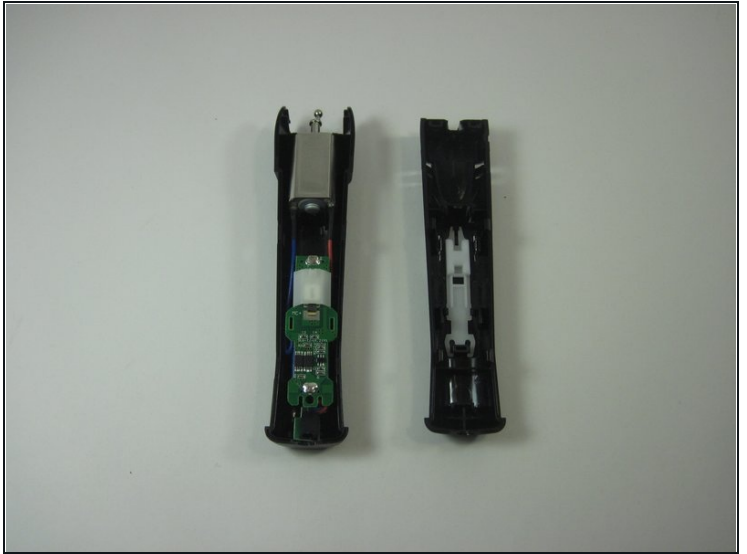
- Begin by removing the rubber grip along the handle.

Step 2



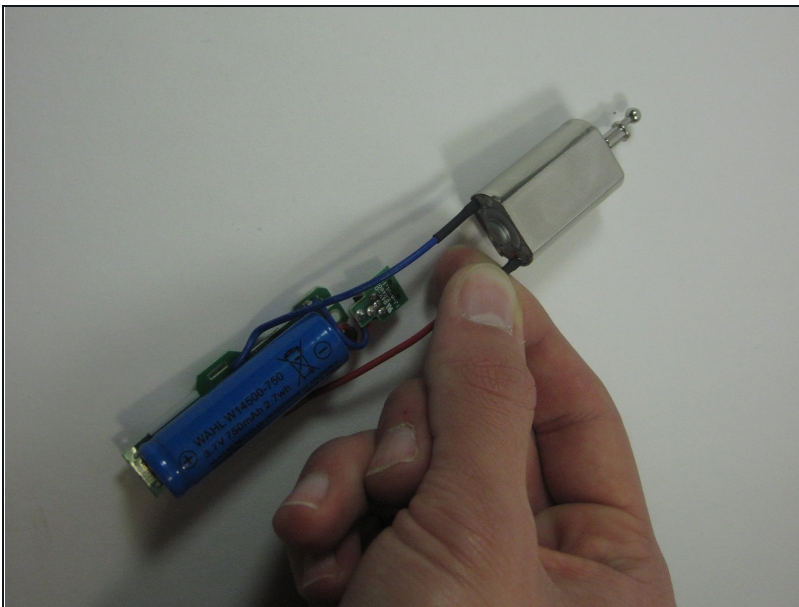
- Remove the screws from the top to take the metal piece and plastic part off.

Step 3



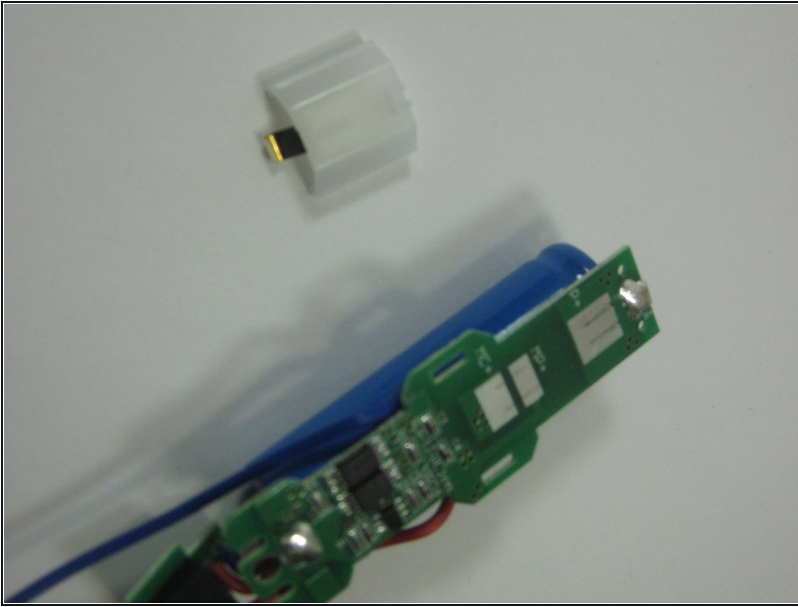
- Pry open the plastic cover into two separate pieces. The plastic is very durable so don't worry about breaking it upon prying it open.

Step 4 — Lithium Ion Battery Replacement



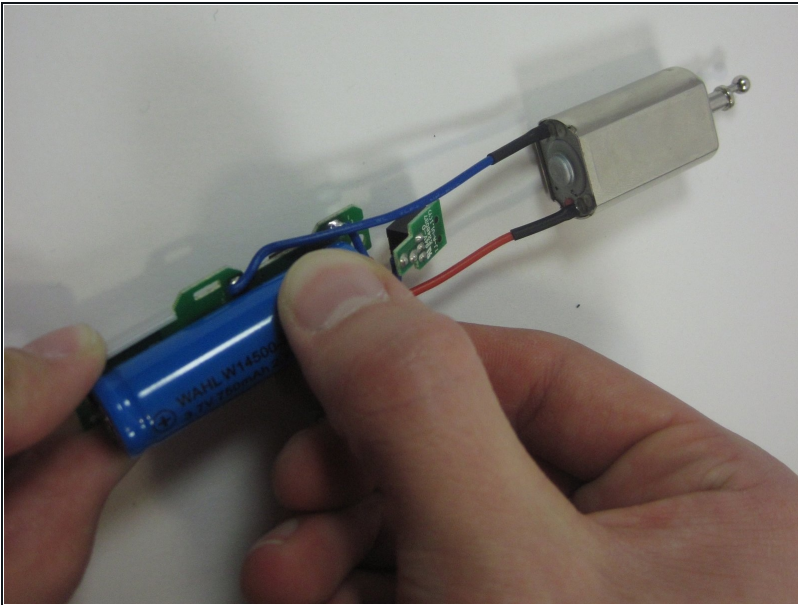
- Remove the chip set, motor and battery from the plastic body. This photo shows the motor and wires connecting it to the battery.

Step 5



- Remove the white plastic cover over the chip set allowing the battery to be taken off.

Step 6



- Remove the Lithium Ion Battery and replace it with the new one that you purchased.

To reassemble your device, follow these instructions in reverse order.