



LG VX8350 Teardown

This guide will show you how to perform a complete teardown of the LG VX8350.

Written By: Jonathan Flowers





TOOLS:

- [iFixit Opening Tools](#) (1)
- [Phillips #0 Screwdriver](#) (1)
- [Spudger](#) (1)
- [Tweezers](#) (1)

Step 1 — Battery



- Locate the horizontal grip located on the back cover of the phone.
- Slide the back cover down and off of the phone.

Step 2



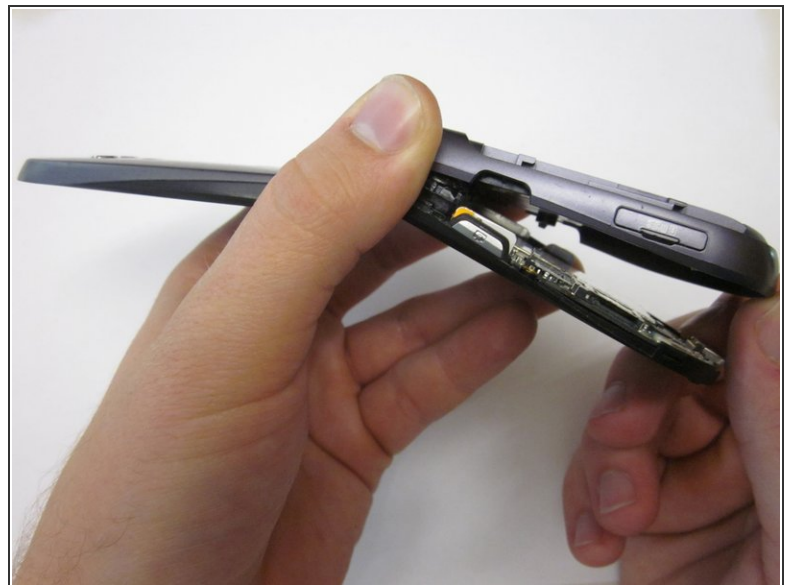
- Insert a plastic opening tool into the battery release point located above the battery.
- Pull outwards in order to release the battery.

Step 3 — Circuit Board Housing



- Locate the 5 screws holding the body of the phone together.
- i* The top screw will have a plastic cover, remove it using tweezers.
- Using a Philips head screwdriver, twist counterclockwise to remove the screws.
- Take special care with the screw located at the top of the phone. It is smaller and more likely to be damaged or improperly attached.

Step 4



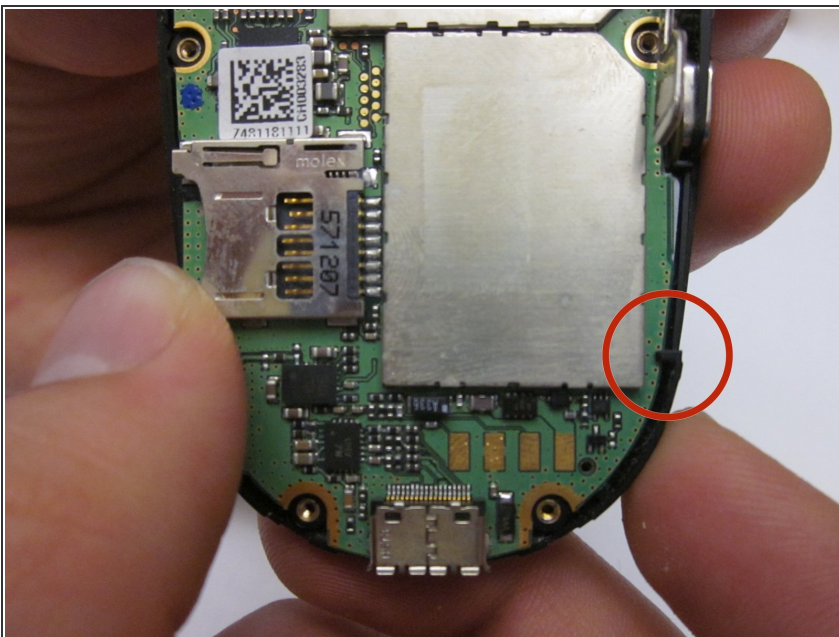
- Lift the back cover starting at the bottom of the phone.

Step 5



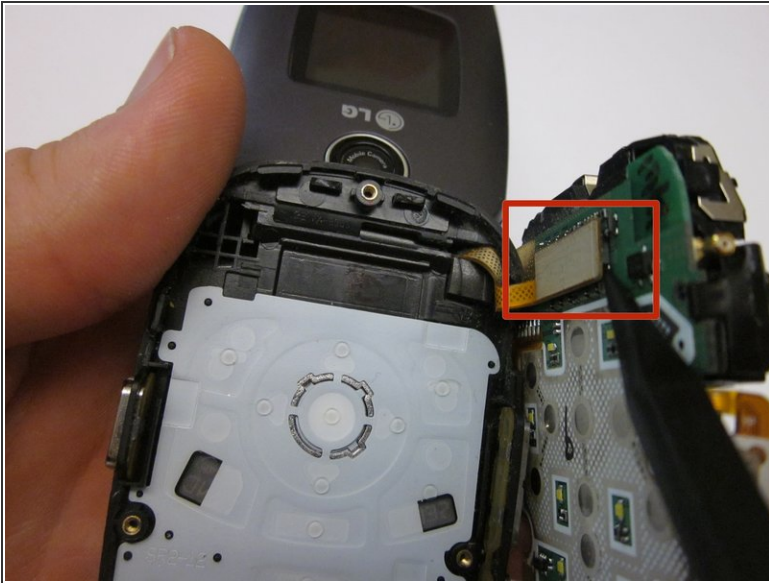
- Remove the back cover completely from the phone.

Step 6 — Circuit Board



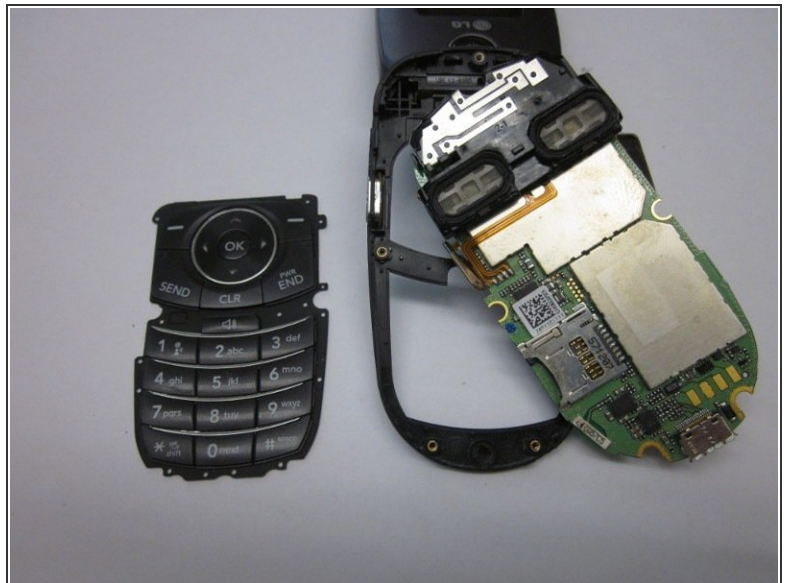
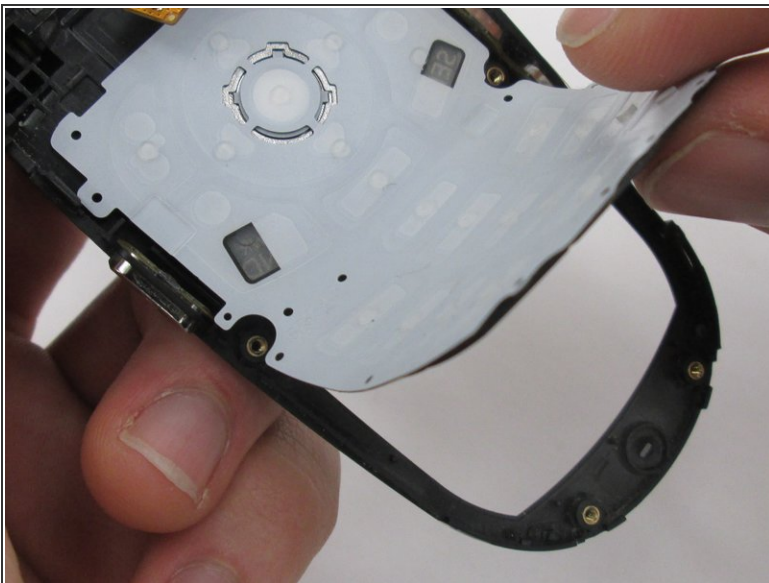
- Locate the clamp at bottom right side of the Circuit Board.
- Pull the circuit board from the phone being cautious to pull out underneath the clamp.

Step 7



- Locate the ribbon connecting the circuit board to the phone display.
- Using the spudger, disconnect the ribbon connecting the phone's display and the circuit board.
- Remove the circuit board

Step 8 — Keypad



- Lift the keyboard and remove it from the phone.

Step 9 — Screen Cover



- Locate the two rubber circles covering the screws.
- Remove the rubber covers using tweezers.
- Using the Phillips head screwdriver, unscrew and remove the two screws.

Step 10



- Close the phone and gently pull outwards from the bottom left portion of the phone cover.
- ⓘ Take care not to do this with too much force, as it could crack the cover.
- Completely remove the cover from the phone.

Step 11 — LG VX8350 Teardown



- You have now performed a complete teardown of the LG VX8350.

To reassemble your device, follow these instructions in reverse order.