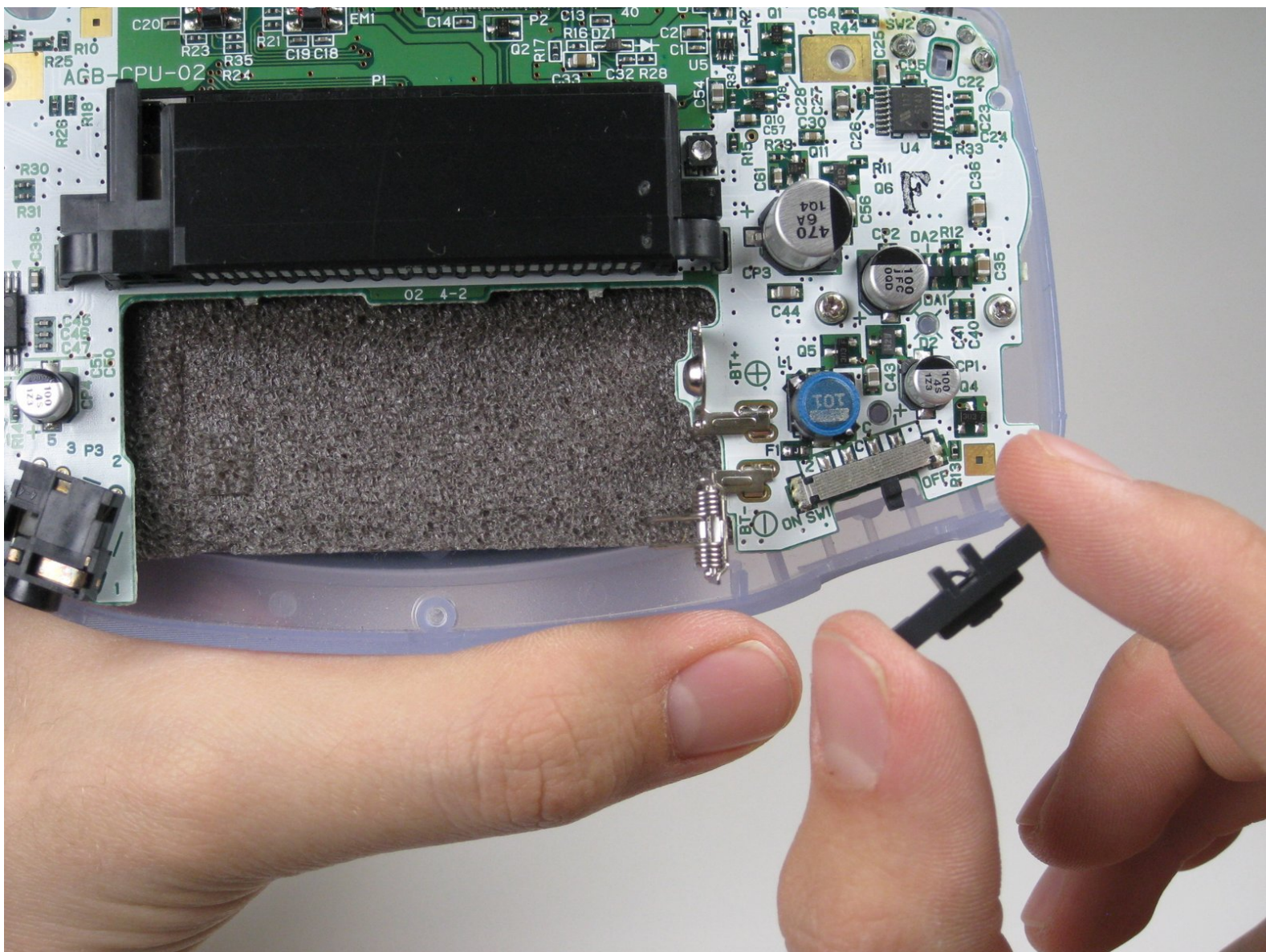




# Game Boy Advance On/Off Switch Replacement

Written By: Adam



---

## INTRODUCTION

Use this repair guide when debris needs to be cleared from the On/Off switch or it needs to be replaced.

---



### TOOLS:

- [Phillips #1 Screwdriver](#) (1)
  - [Tri-point Y0 Screwdriver](#) (1)
-

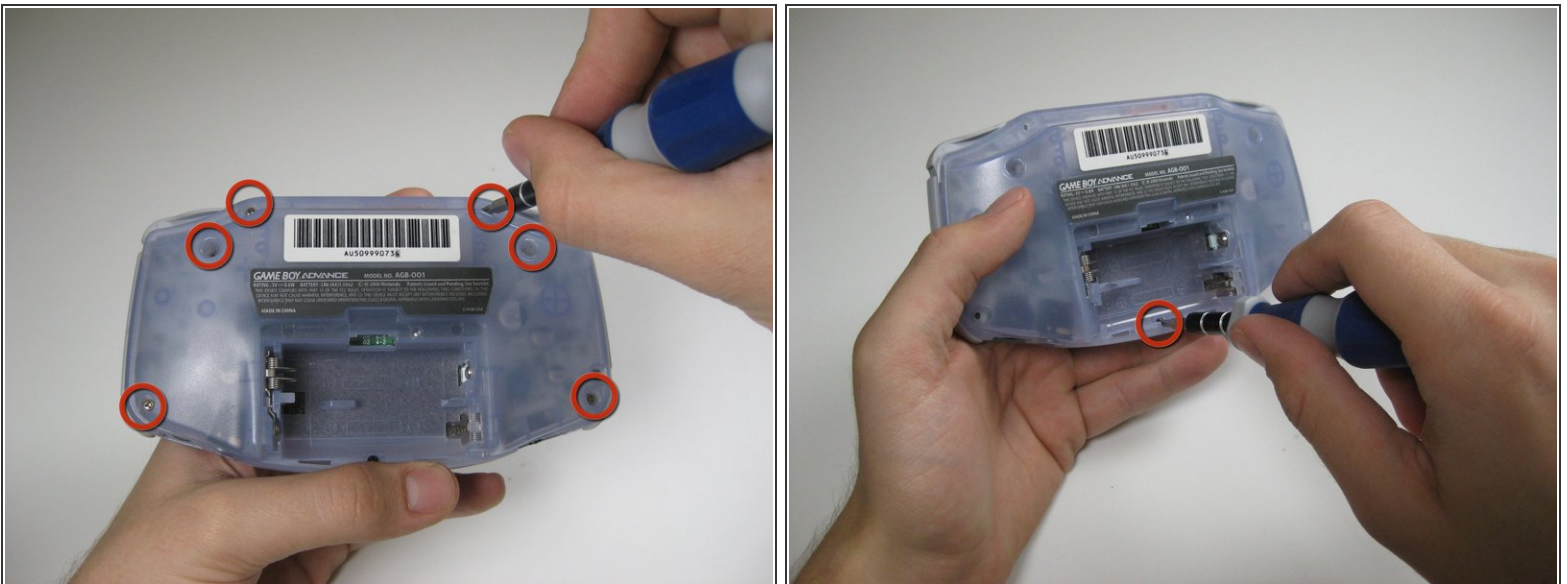
## Step 1 — Remove the Battery Cover/Batteries



- Take the battery cover off by releasing the locking tab and hinging the cover away. Remove the batteries inside the cover

**⚠ Do not forget to remove the batteries! This applies to working with any electronic device as working with live electricity may damage the device or cause malfunctions**

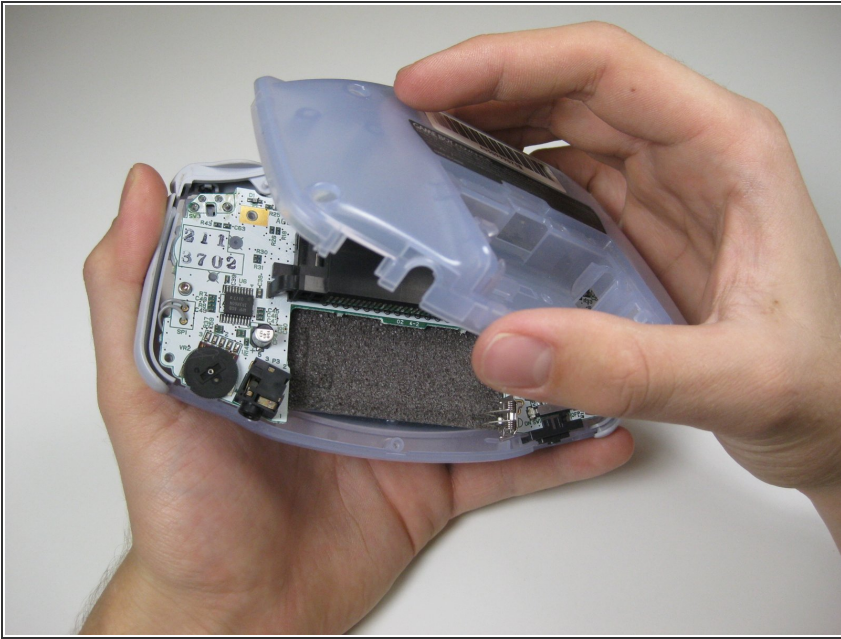
## Step 2 — Unscrew the Back Panel



- Remove the six back panel screws using a Tri-wing Screwdriver.
- Remove bottom back panel screw with a Phillips #1 screw driver. (Image #2)



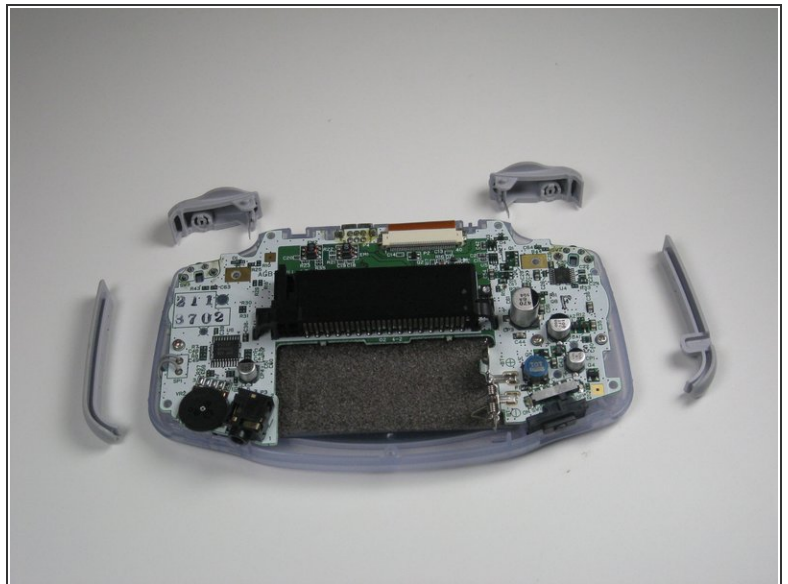
### Step 3 — Remove the Back Panel



- Remove the back panel by pulling away with one hand and the front secured in the other hand.

**⚠ Removal of the back panel may cause shoulder buttons and side panels to come loose and fall off.**

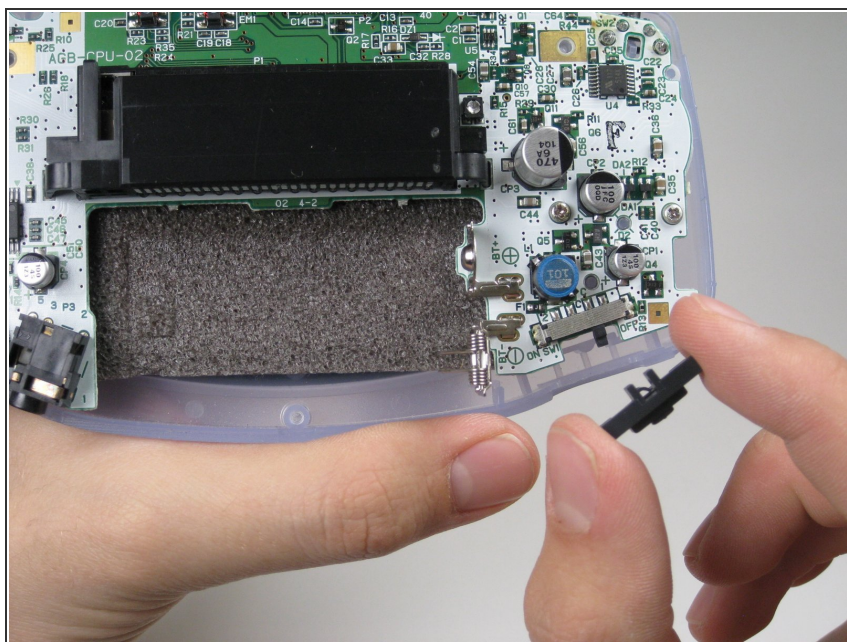
### Step 4 — Remove Triggers



- Remove left and right triggers by lifting and pulling them away from the system.
- Do the same for side panels

**i For finicky or jammed triggers only!** Adjust and correct triggers and reassemble. Most jammed triggers are caused by buttons misplaced or jammed in its enclosure.

## Step 5 — Remove the On/Off Switch



- Remove the gray **On/Off** Switch by pulling up and away from the unit. Replace with another switch if necessary.

To reassemble your device, follow these instructions in reverse order.