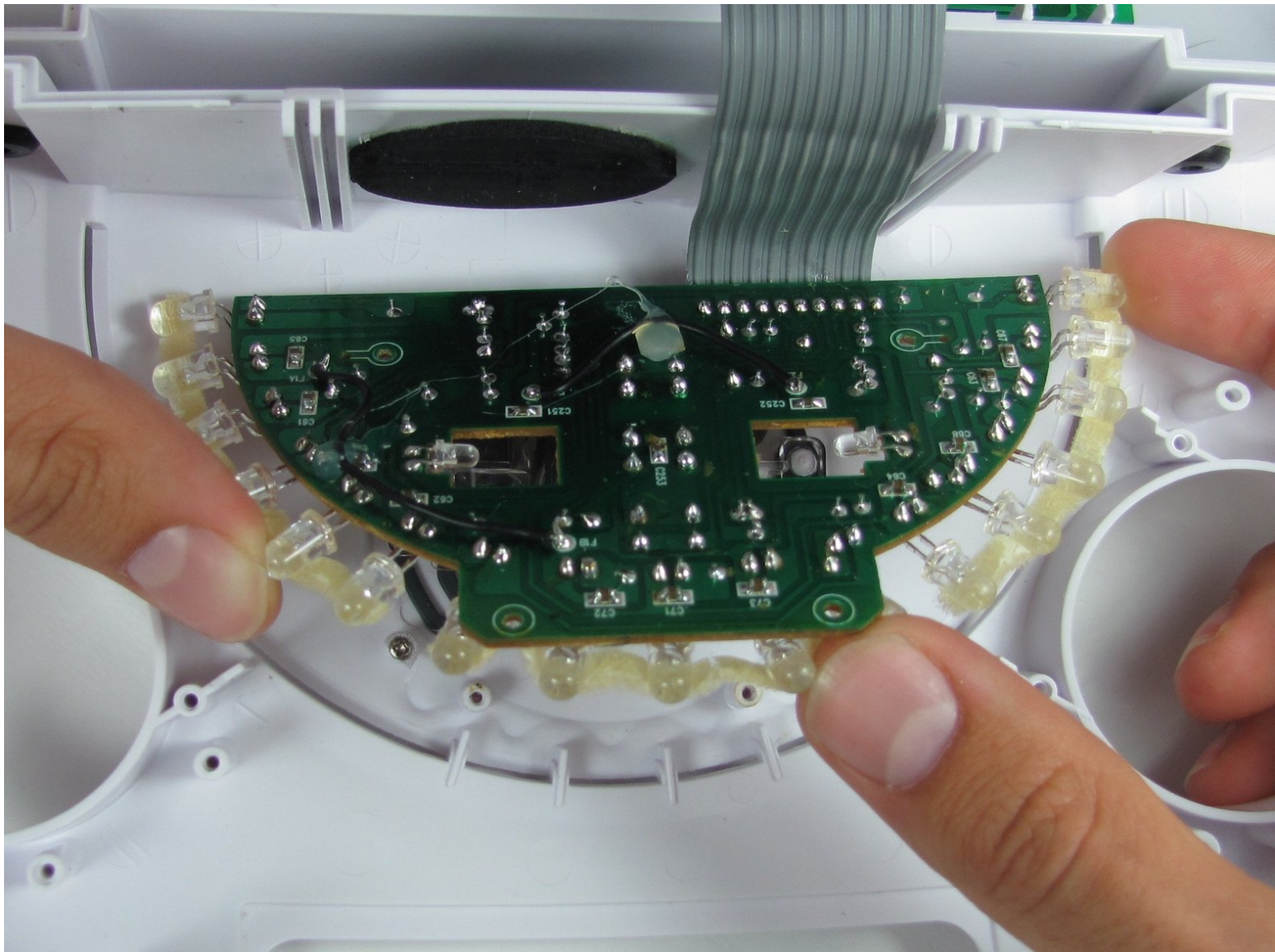




Sharper Image iPulse SI325 LED Lights Replacement

Use this guide to replace the LED lights on the Sharper Image iPulse SI325.

Written By: Melissa Pasa



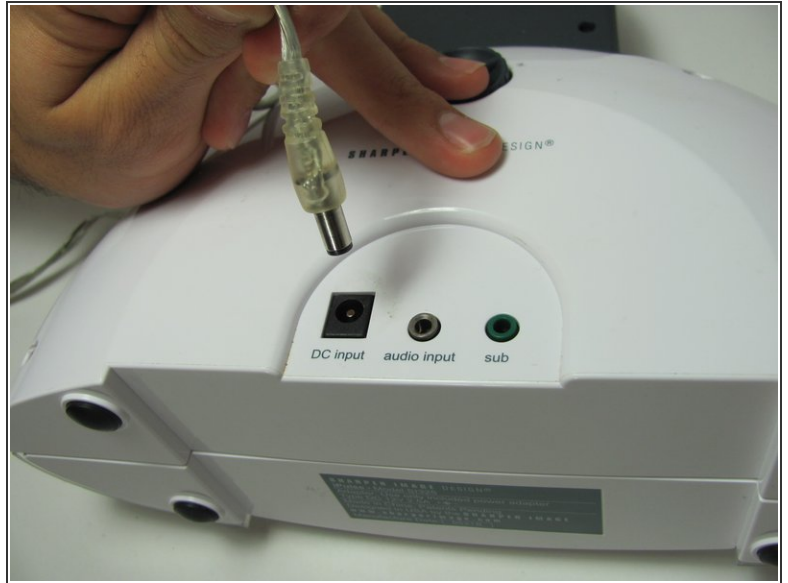
INTRODUCTION

This guide will show you how to replace the LED lights inside the device. There is soldering required, so if you need assistant please read this soldering technique [page](#).

TOOLS:

- [Phillips #1 Screwdriver](#) (1)
 - [Phillips #2 Screwdriver](#) (1)
 - [Soldering Iron](#) (1)
-

Step 1 — Outer Case




- Gently position the device so that the buttons and speakers lie face down.
- Unplug the power cord from the "DC Input."


Step 2




- Remove the four 12mm phillips head #2 screws located along the outer edge of the white case.

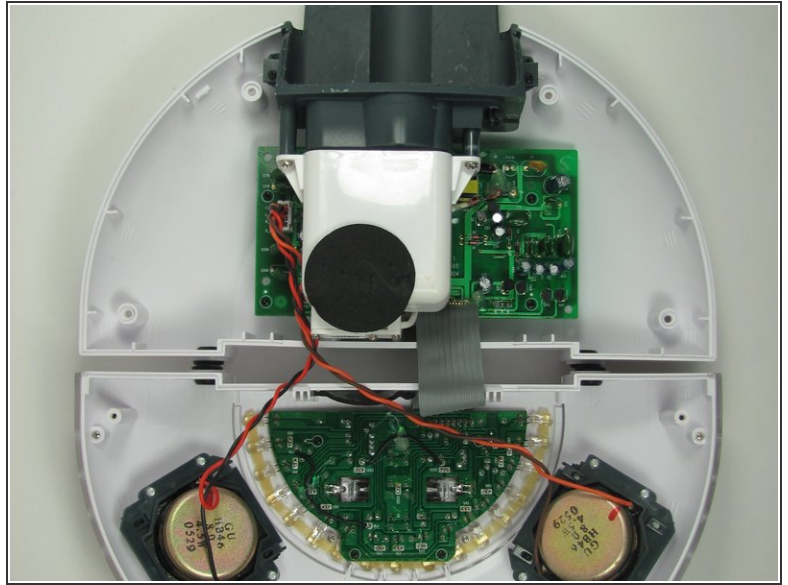
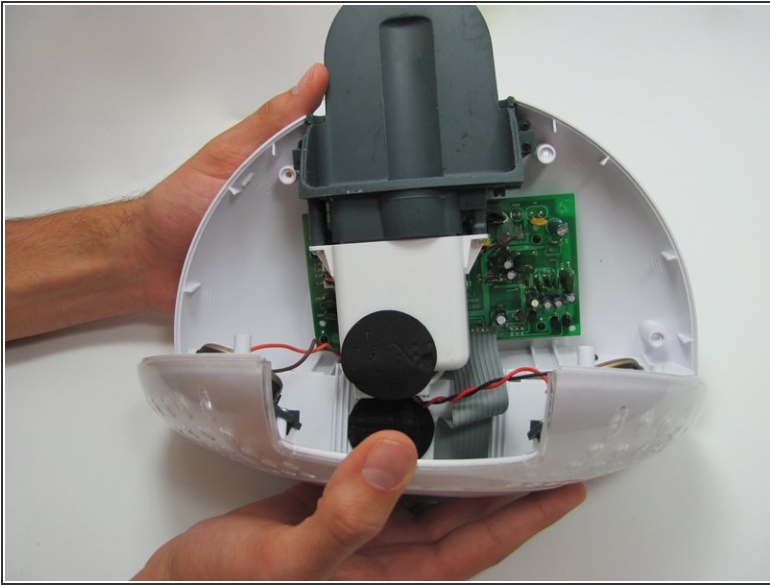
 Be careful! There are two small, easily-broken, plastic tabs at the bottom of the device keeping it together.

- Once you remove the screws, pick the device up so that the grey label on the bottom of the device faces toward you.
- With your thumbs on either side of the grey label, slowly push with both thumbs until the case pops open.

 A small gap will open as the two tabs are released.

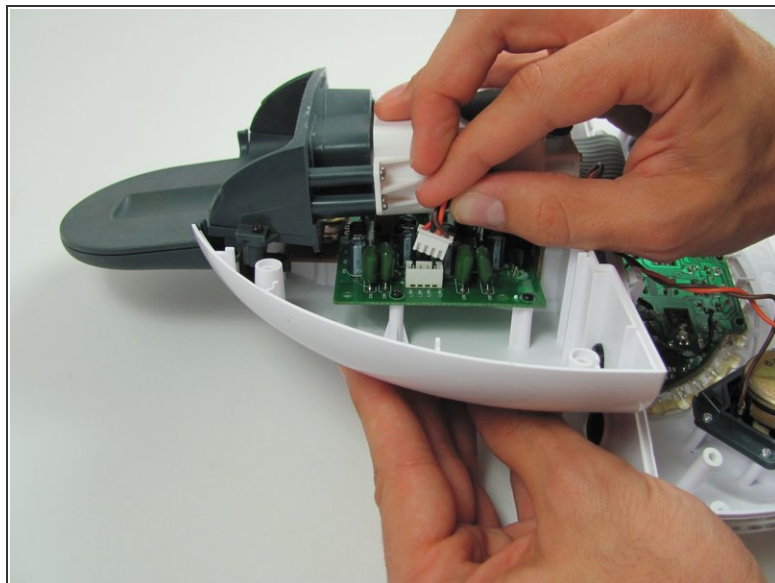
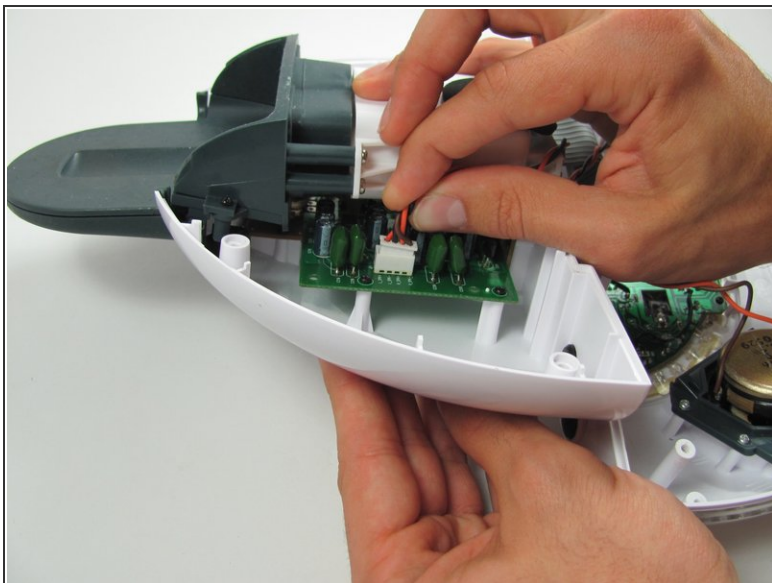
 Do not pull the two halves apart yet. They are held together by the speaker wire.

Step 3



- Grip both sides of the top round part of the case and carefully open it like a clam. The bottom of the two halves are connected by the speaker wire. Do not separate by more than 1 centimeter.
- Grip either side of the top round part of the case and carefully open the device to reveal all the hidden treasures inside!
- Lay the device down, so that all the internal components are facing upwards.

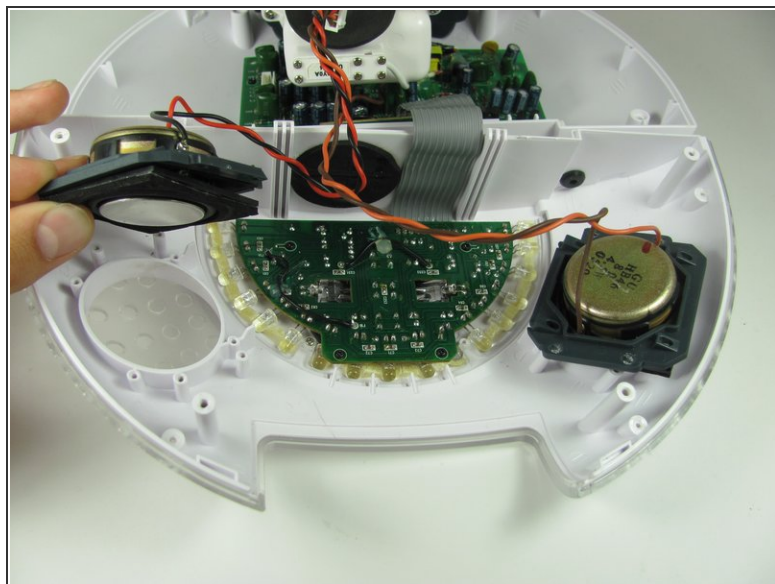
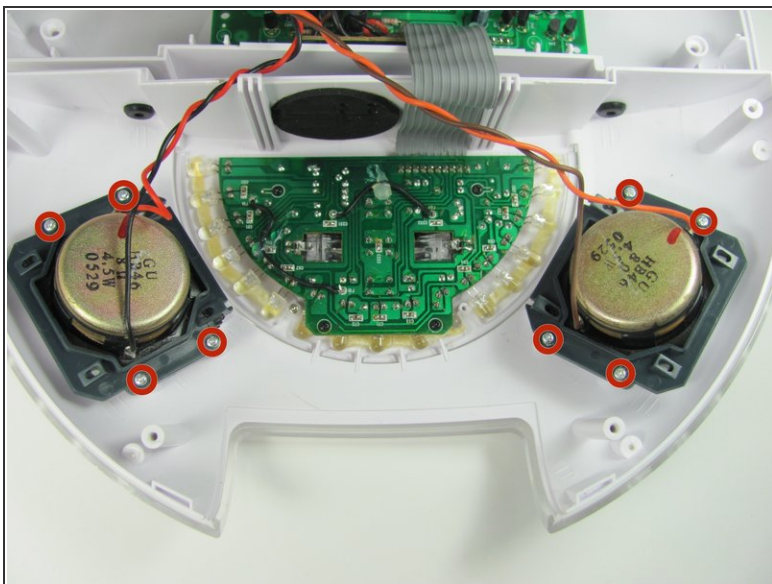
Step 4 — Speakers



- Disconnect the speaker wire from the motherboard by firmly gripping the black and red wires close to the connection with two fingers and pulling the connector out.

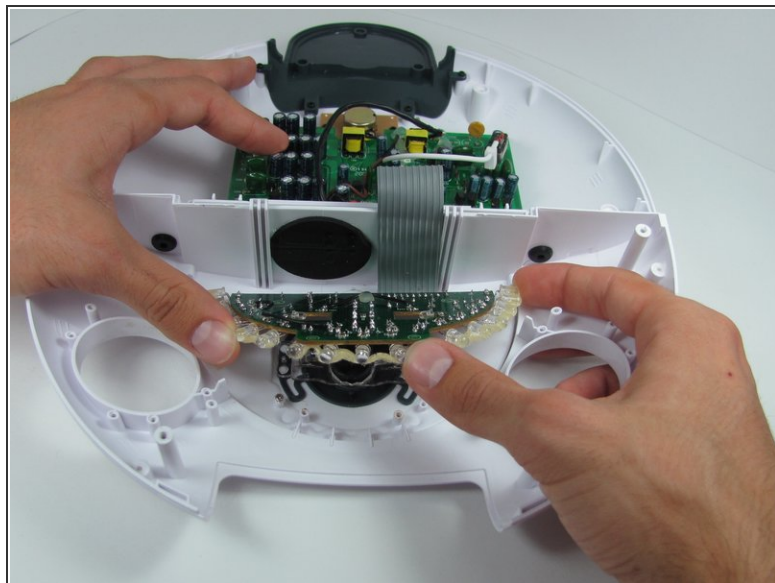
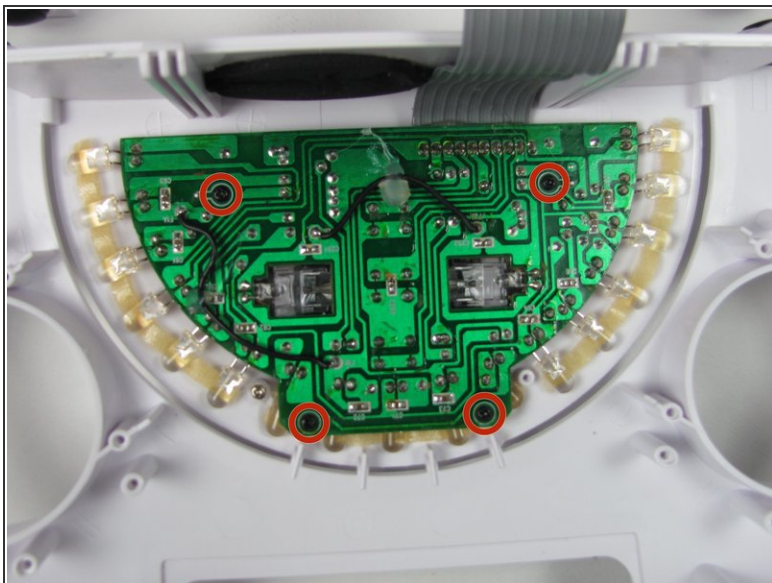
i Wiggling the connector back and forth as you pull will make removal easier.

Step 5



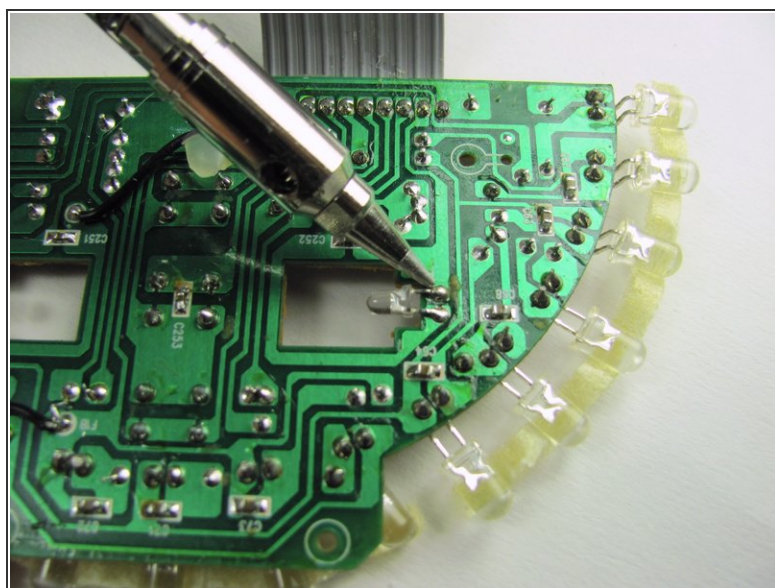
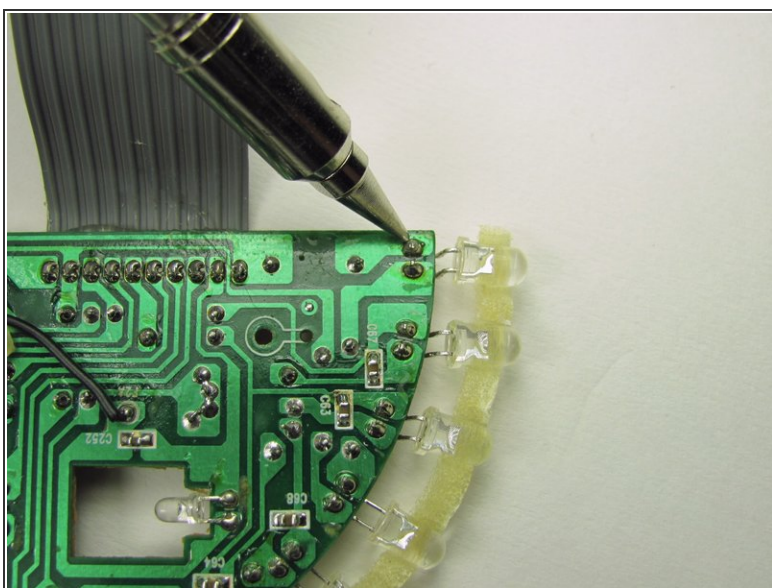
- Remove the eight 11mm Phillips #1 screws that connect the speakers to the white outer case.

Step 6 — LED Lights



- Remove the four 7mm Phillips #1 screws on the circuit board with the LED lights.
- Slowly lift the circuit board out of the front cover and place the cover out of the way.

Step 7



- Remove the solder connecting the LED light that needs replacement.

To reassemble your device, follow these instructions in reverse order.