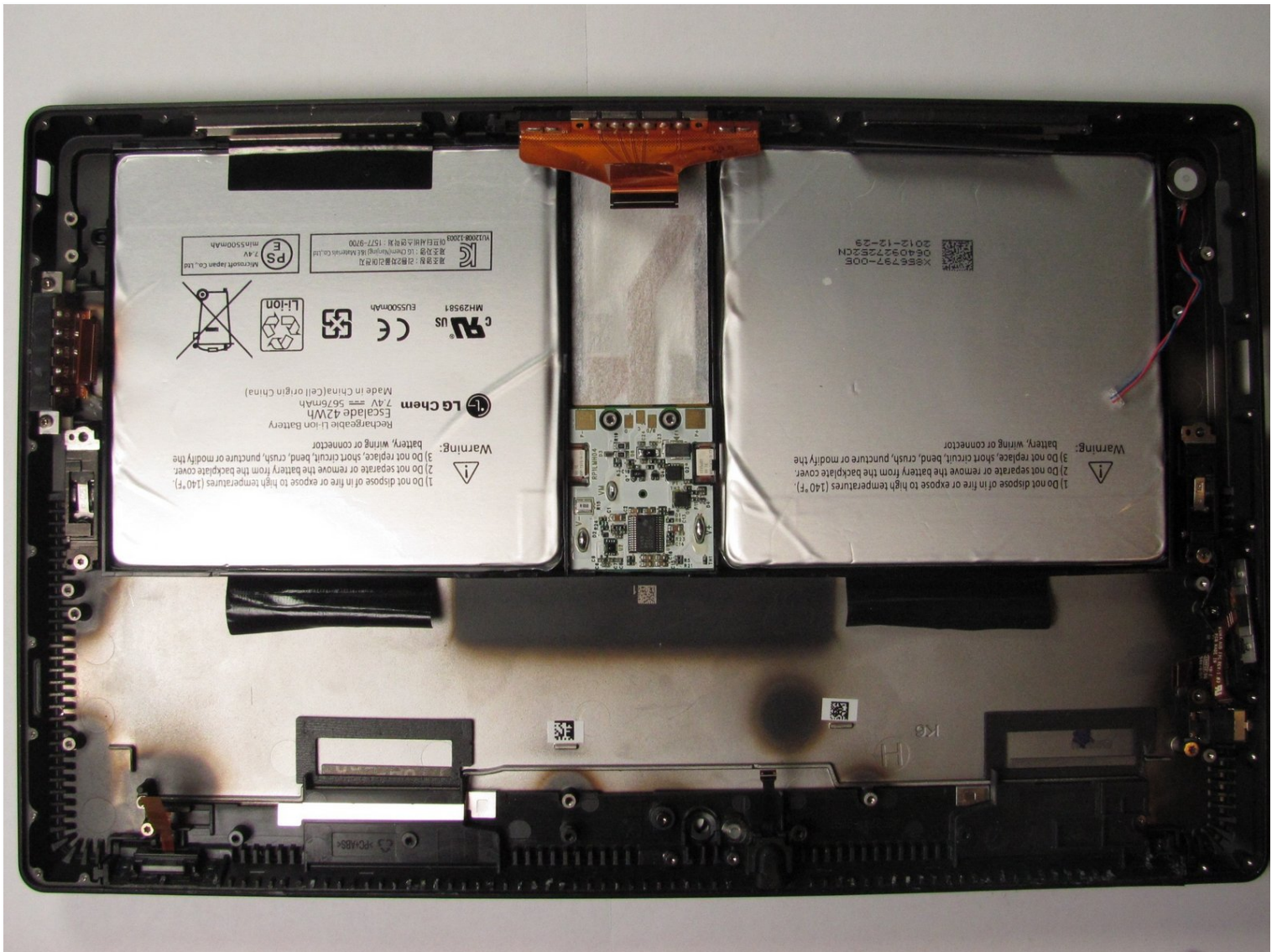




Microsoft Surface Pro Battery Replacement

Use this guide to replace the battery pack in...

Written By: Jonathan Choi



INTRODUCTION

Use this guide to replace the battery pack in the Microsoft Surface Pro.

TOOLS:

[iOpener](#) (1)
[iFixit Opening Picks \(Set of 6\)](#) (1)
[T5 Torx Screwdriver](#) (1)
[Spudger](#) (1)
[T2 Torx Screwdriver](#) (1)
[T3 Torx Screwdriver](#) (1)

PARTS:

[Microsoft Surface Pro \(1st Gen\) Battery](#) (1)

Step 1 — Display



- Use a heated [iOpener](#) or a heat gun to heat the edges of the display and soften its adhesive.
- ⓘ If you're using an iOpener it may take several cycles of reheating and applying it to soften the adhesive enough. Every time, let the iOpener sit on the display for at least a minute before reheating to allow the adhesive to soften.

Step 2

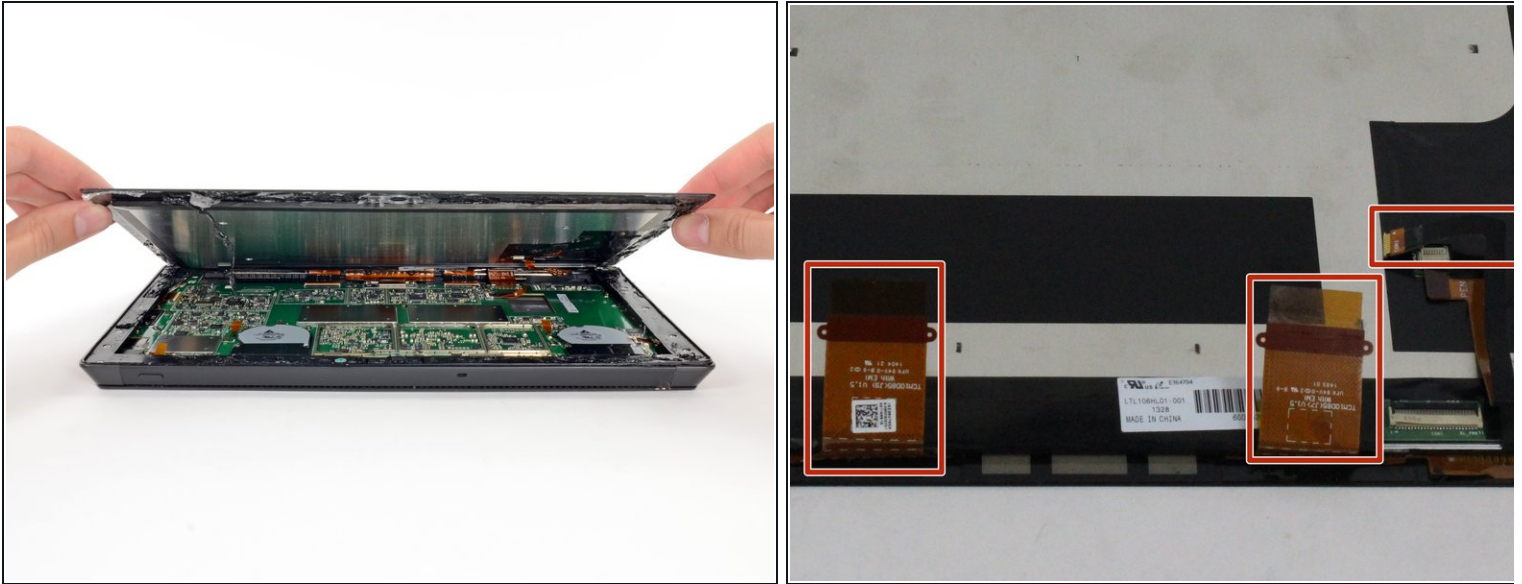


- Apply a suction cup as close as possible to the edge of the display.
- Use the suction cup to lift the edge of the display enough to insert an opening pick under the edge.
- Slide the opening pick all the way around the edges of the display to cut through the adhesive on the bezel.

⚠ Do not insert the opening pick past the bezel of the display—you may permanently damage the display.

⚠ Be very careful and move slowly during this step. The display is fragile and will crack if too much force is applied against it. If your tools seem stuck, apply more heat to further soften the adhesive.

Step 3



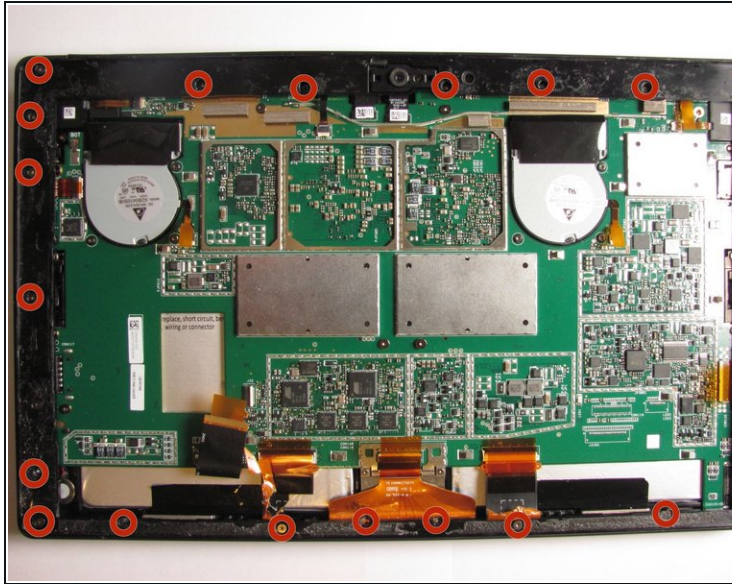
- Starting from the top edge, lift the display slightly. If you feel any resistance, use heat and an opening pick to slice through any remaining adhesive.
- Before completely removing the display, disconnect the three display cables.

Step 4



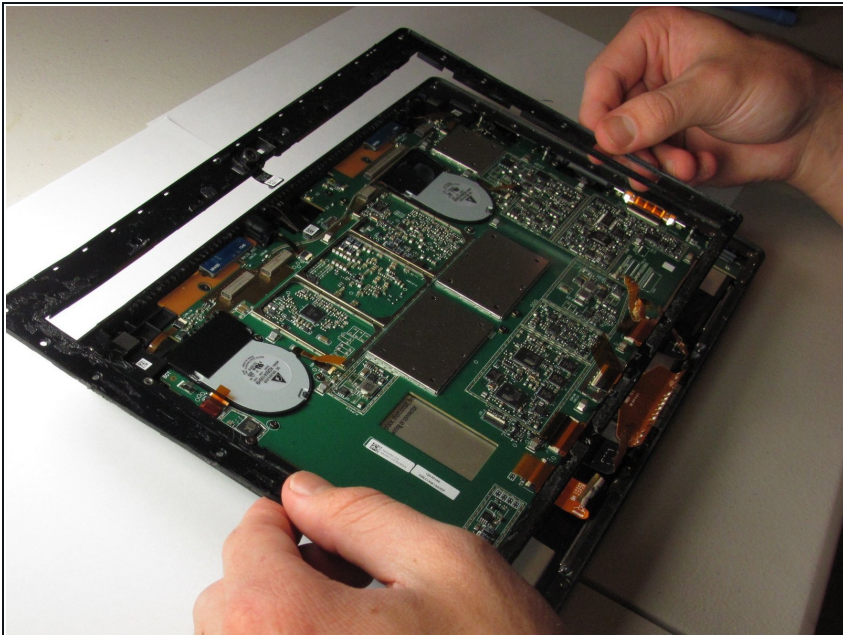
- Remove the display.

Step 5 — Battery



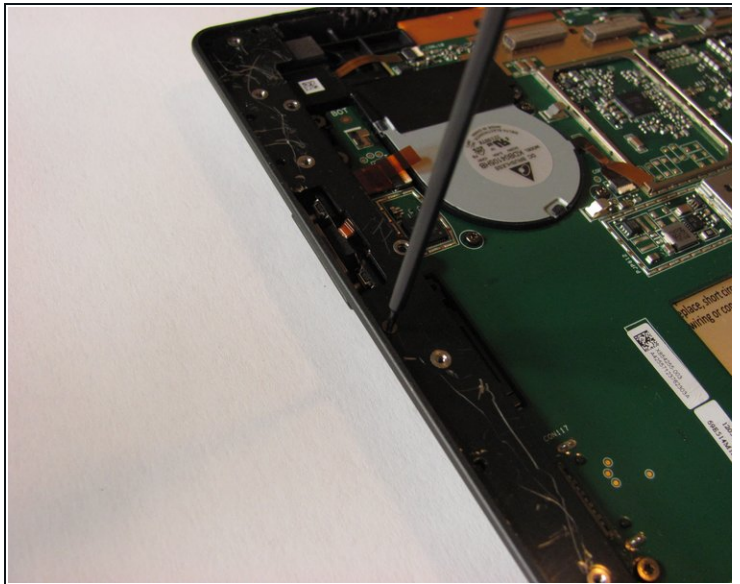
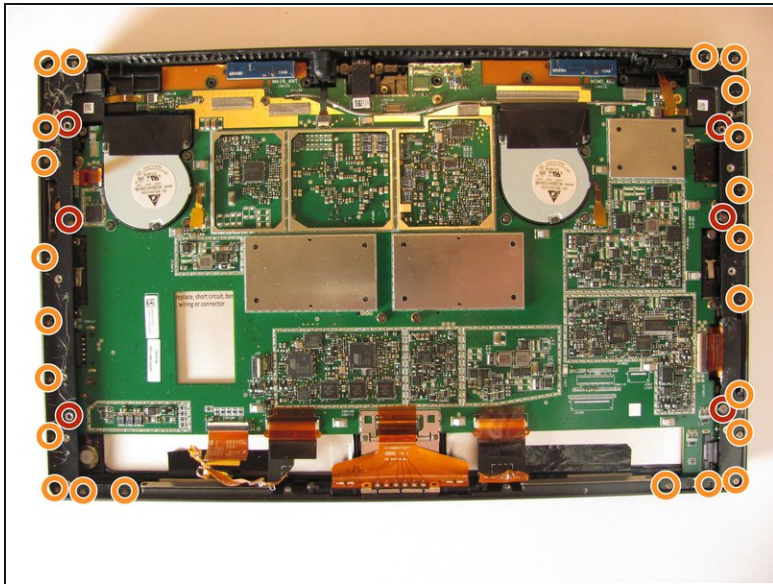
- Using a T3 Torx screwdriver, remove a total of 23 screws from the screen bezel of the Surface Pro.

Step 6



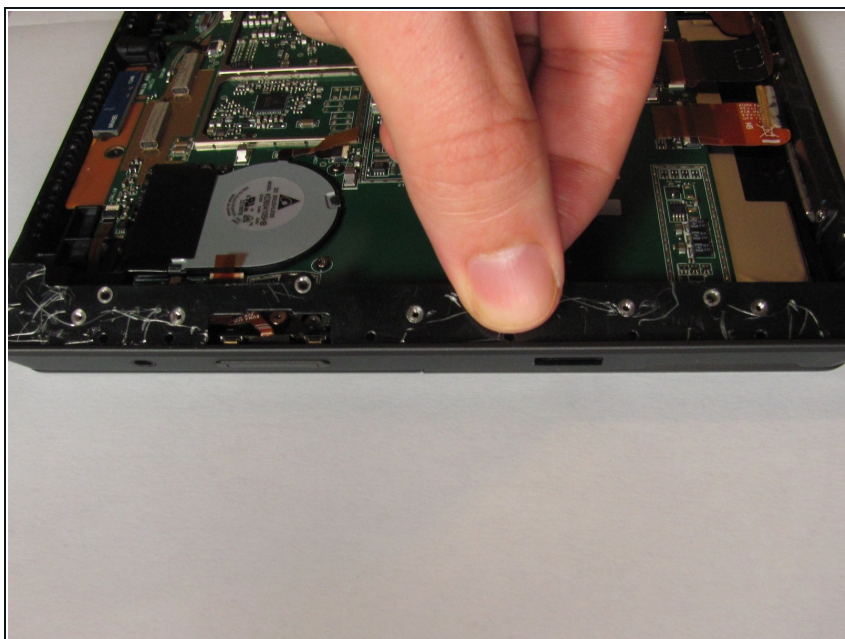
- Lift the screen bezel from the Surface Pro.

Step 7



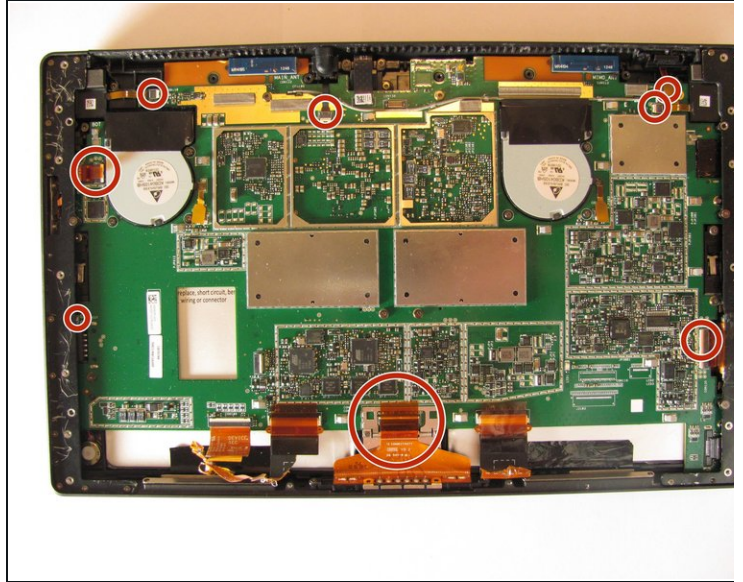
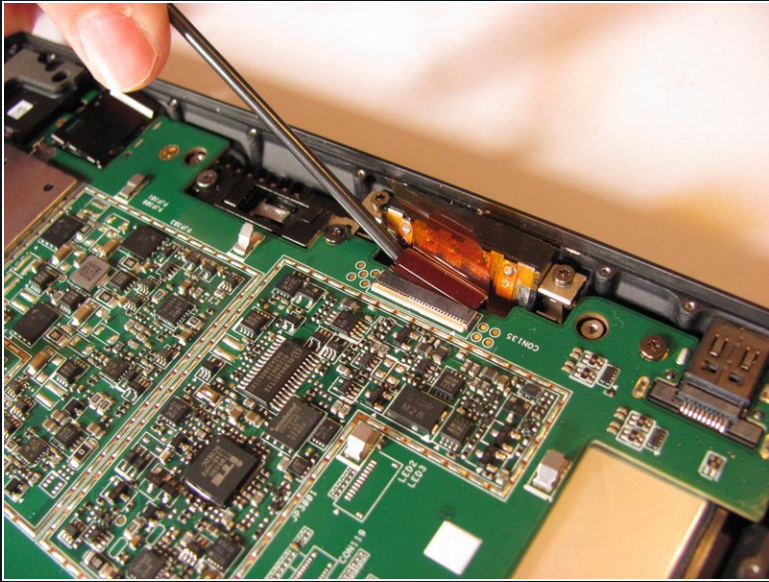
- Remove the 6 T5 screws from the panels on each side of the frame.
- Remove 23 T2 screws from the panels.

Step 8



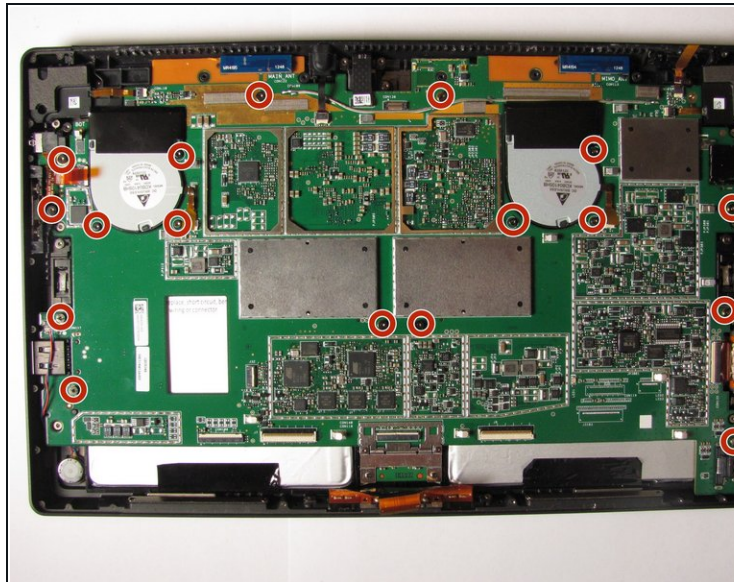
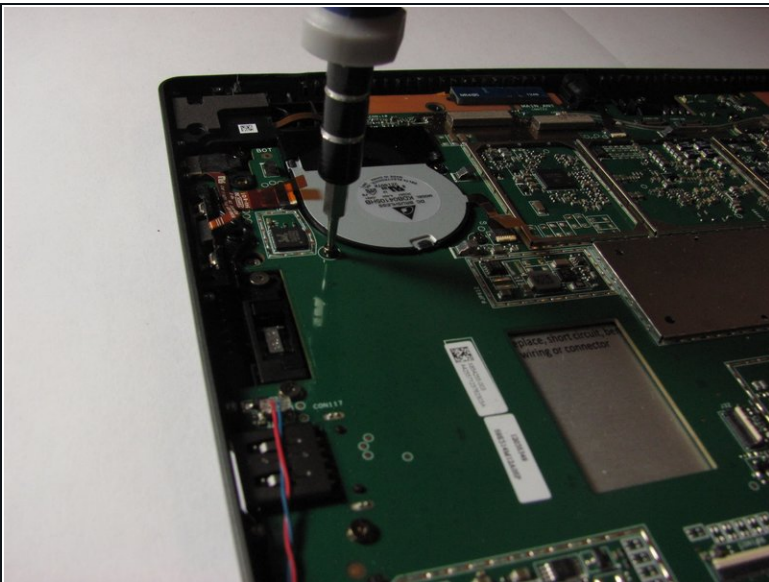
- Lift both metal panels from the frame.

Step 9



- Using tweezers, gently pull the eight orange ribbon cables from their sockets.

Step 10



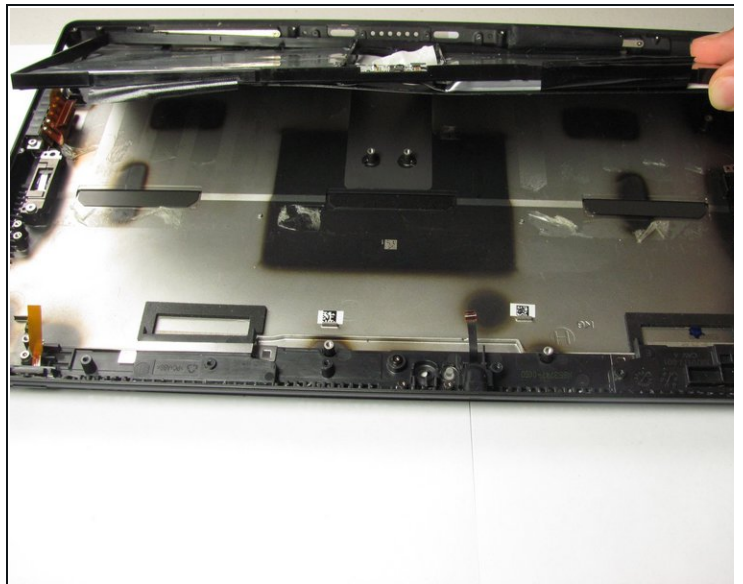
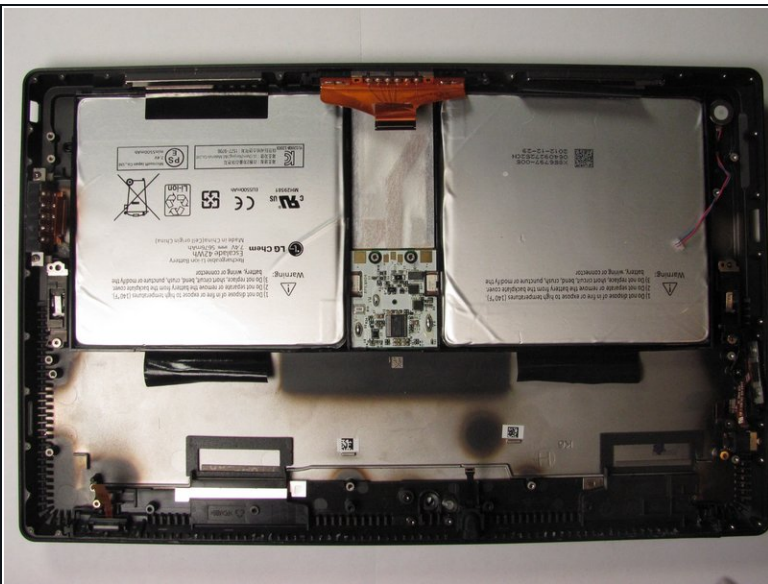
- Unscrew the 17 T5 torx screws on the motherboard with the T5 torx screw driver

Step 11



- Once all screws are removed, gently lift up the logic board with your hands to pull it out.

Step 12



- Use your hands to pry off the entire battery pack with enough force to overcome the glue keeping the batteries in place.

To reassemble your device, follow these instructions in reverse order.